



HP Deskjet F4480 Top Lid Replacement

In order to gain access to most of the internal...

Written By: Tim



INTRODUCTION

In order to gain access to most of the internal components the top (or lid) of the printer must be removed. This guide is intended as a prerequisite for other installations.

TOOLS:

TR10 Torx Security Screwdriver (1)

Step 1 — Open front access panel



- Open the front access panel by placing your finger in the front slot and pulling gently.

Step 2 — Top Lid



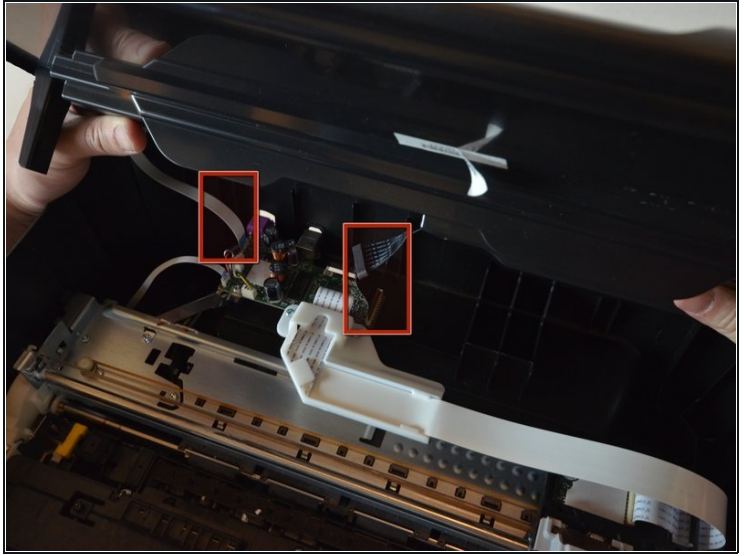
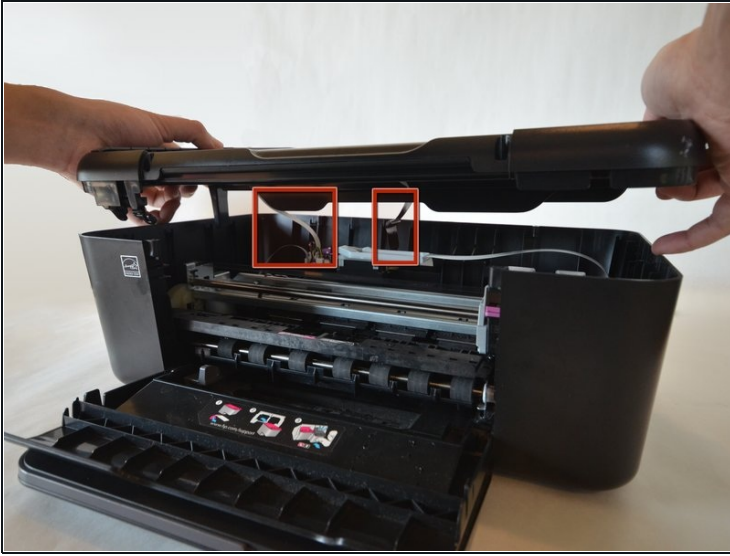
- Open the protective lid that is covering the glass. Press gently against the base of the panel to remove the lid from the rest of the printer.

Step 3



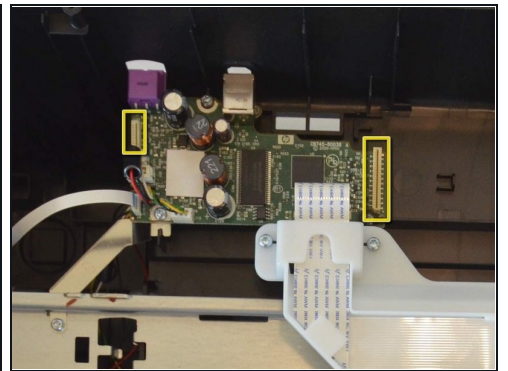
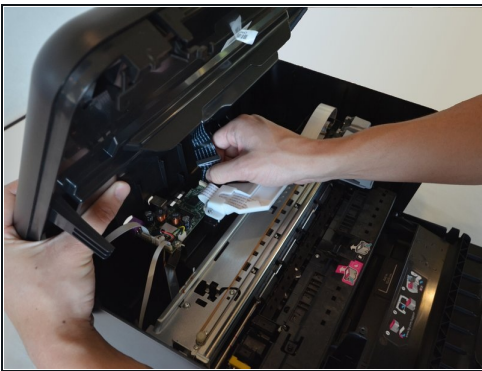
- Remove the **four** 9mm T10 Torx screws on the top.

Step 4



- Carefully lift the top panel off of the printer.
- Do not tear or damage the **two** cables that connect the top lid to the motherboard.

Step 5



- Remove the **two** cables by gripping each one close to their connection ports on the motherboard and gently disconnecting them.

To reassemble your device, follow these instructions in reverse order.