



# Panasonic VDR-D220 DVD Viewfinder Replacement

Replacing your viewfinder for the Panasonic VDR-D220 if found that it is inoperable currently due to a malfunction of some kind.

Written By: Brandon Gregoire



## INTRODUCTION

This guide will assist you in removing and replacing the viewfinder on the Panasonic VDR-D220. You will need a new viewfinder in order to make the camera operational again. You may reference this guide if you have found that this is the reason your camera isn't functioning correctly.



### TOOLS:

- [Phillips #0 Screwdriver](#) (1)
- [Jimmy](#) (1)
- [iFixit Opening Tools](#) (1)
- [Spudger](#) (1)



### PARTS:

- [eBay https://ebay.us/i88LTS](https://ebay.us/i88LTS) (1)

## Step 1 — Viewfinder



- Use your Phillips #0 screwdriver to remove the three 5mm screws on top of the camera.
- Remove the metal bracket.

## Step 2



- Rotate the camera to show the bottom side of the camera.
- Remove the four 5mm Phillips #0 screws on the bottom side of the camera.

## Step 3



- Remove one 5mm screw by using Phillips #0 screwdriver.

## Step 4



- Use a spudger to pry the top-front part of the camera from the main body.
- Gently slide the top portion of the camera forward revealing more screws.

⚠ Be sure not to slide the front portion too far, as there are still some cable connections joining the two portions.



## Step 5



- Flip the camera on the right side.
  - Gently pull the front part from the main body.
- ⚠ Do not pull too hard because of the ZIF connector cable.
- Use the plastic opening tool to disconnect the connection point safely.
  - Press the tab with plastic opening tool and then pull the ZIF connector to detach.

## Step 6



- Flip the camera on the bottom side again.
- Remove one more 5mm screw with your Phillips #0 screwdriver that was previously covered.

## Step 7



- Go to the battery basement's side.
- Use your Phillips #0 screwdriver remove the two 5mm screws on the battery base of the camera.

## Step 8



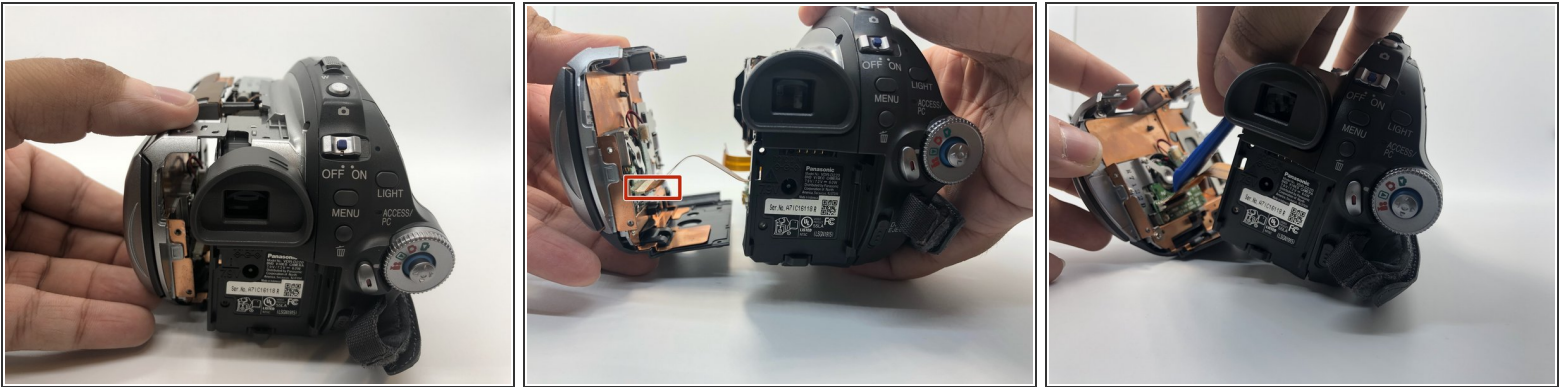
- Rotate the camera to the left side, where the side port is located.
- Open the side port door.

## Step 9



- Remove three 5mm screws inside the side ports by using Phillips #0 screwdriver.
  - Begin to lift the left side of the camera from the main body.
- ⚠ Don't separate the camera sections too far, as there are more cable connections that need to be disconnected.

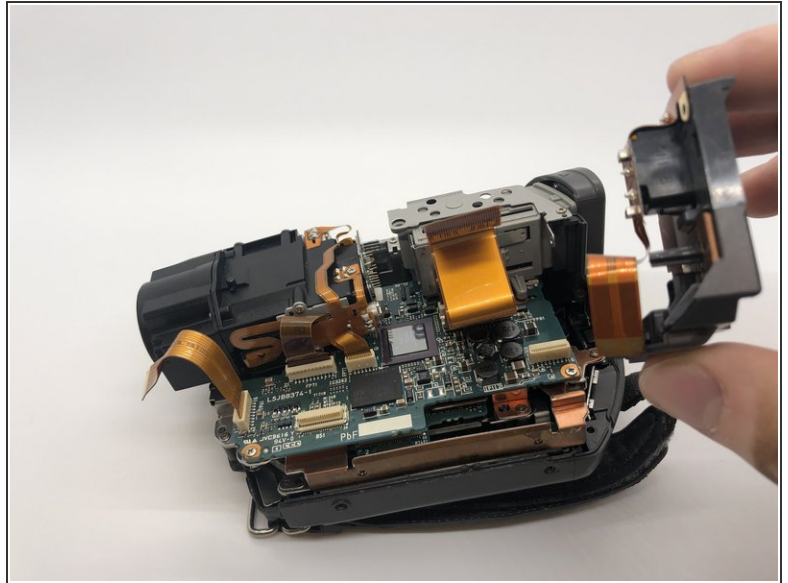
## Step 10



- Rotate the camera to the battery side.
  - Gently pull the side of the camera apart until the cables are exposed.
- ⚠ Do not pull too hard because of the ZIF connector cable.
- Disconnect the ribbon cable with your plastic opening tool, so that the left side of the camera can be removed.
  - Press the tab with plastic opening tool and then pull the ZIF connector to detach.

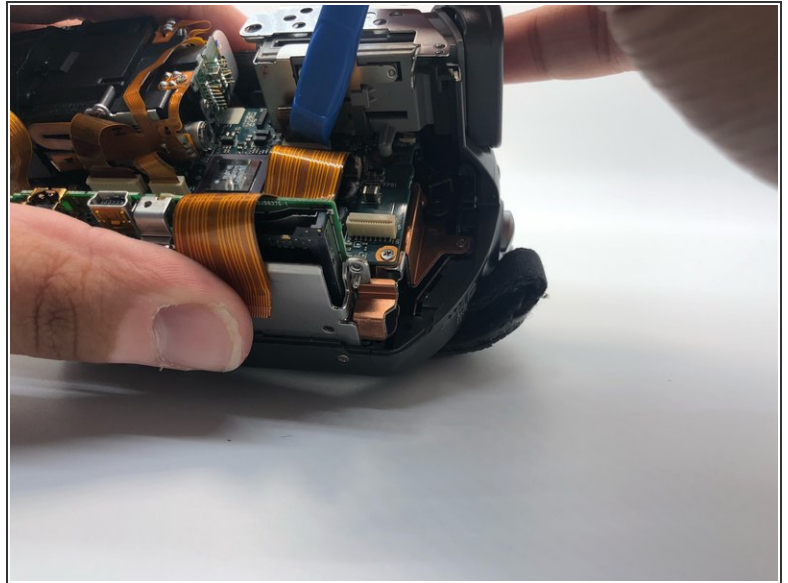
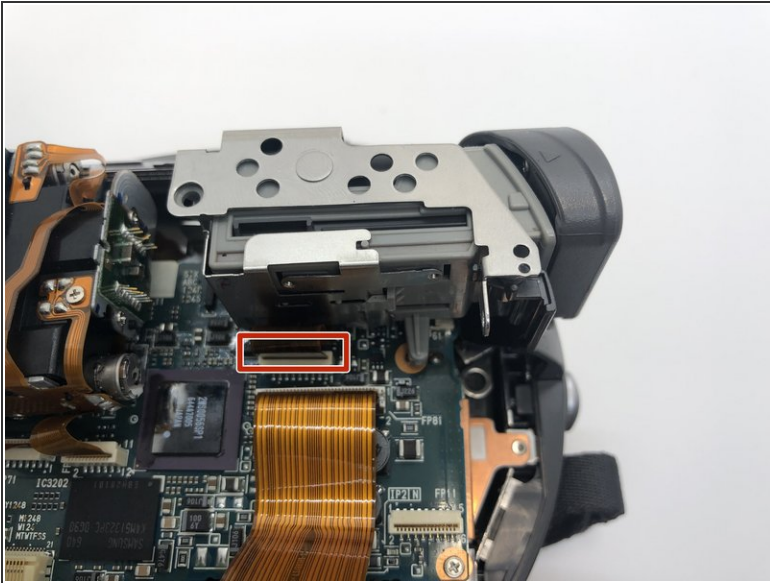


## Step 11



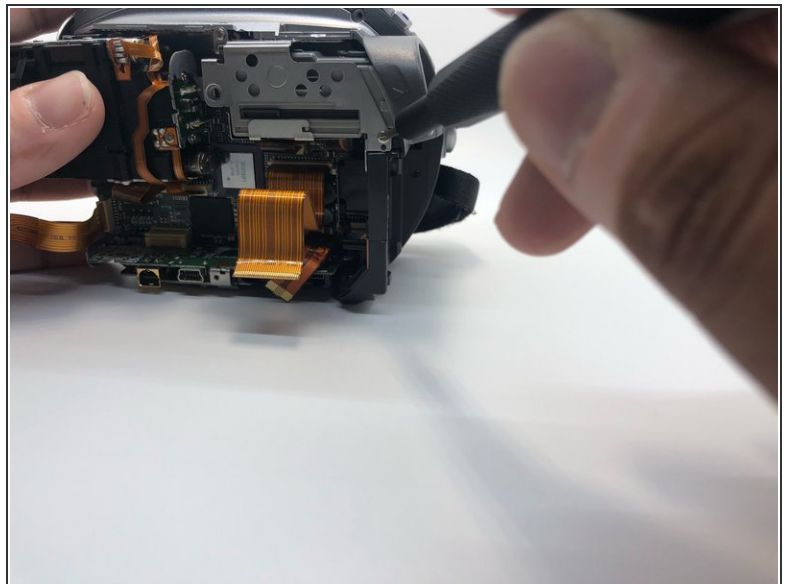
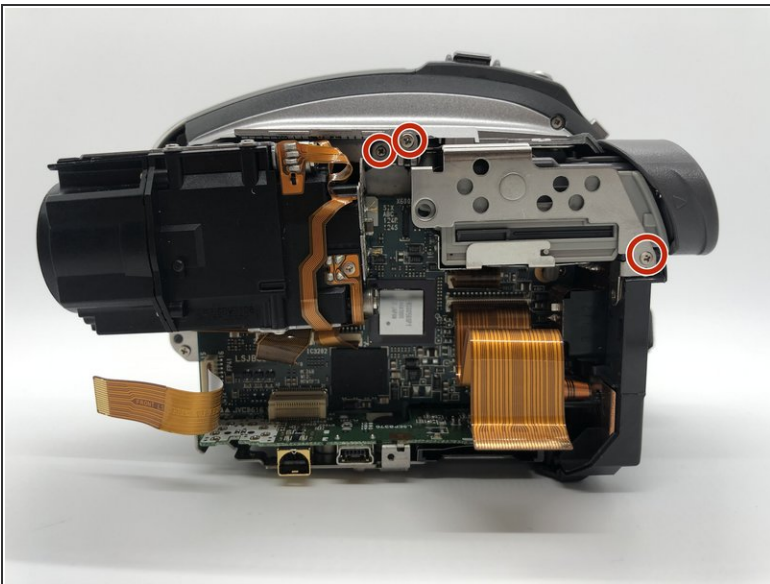
- Remove one 5mm screw from the side of the battery base with the Phillips #0 screwdriver.
- Take off the battery's base from the camera.

## Step 12



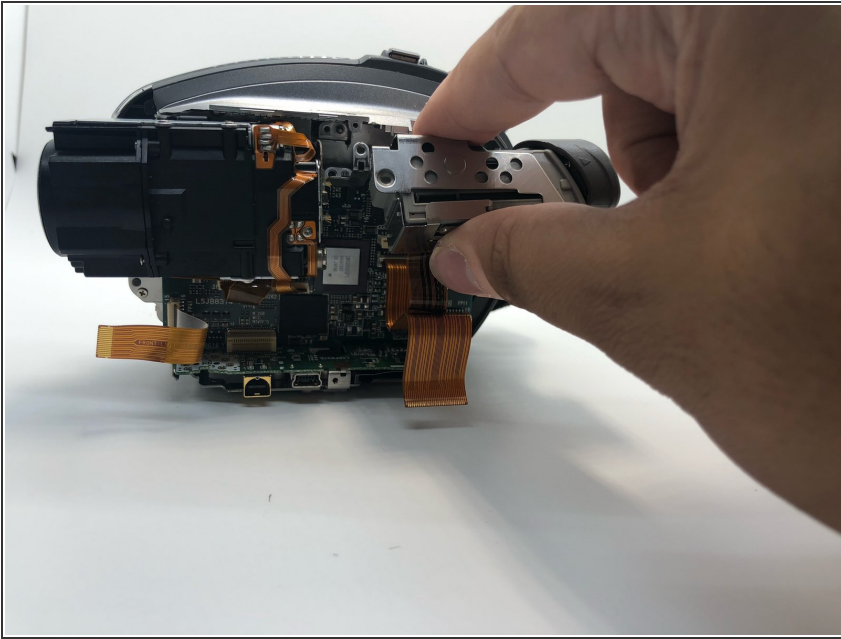
- Remove another ribbon cable that runs from the viewfinder to the top of the motherboard. Use your plastic opening tool to disconnect the connection point safely.
- Press the tab with plastic opening tool and then pull the ZIF connector to detach.

## Step 13



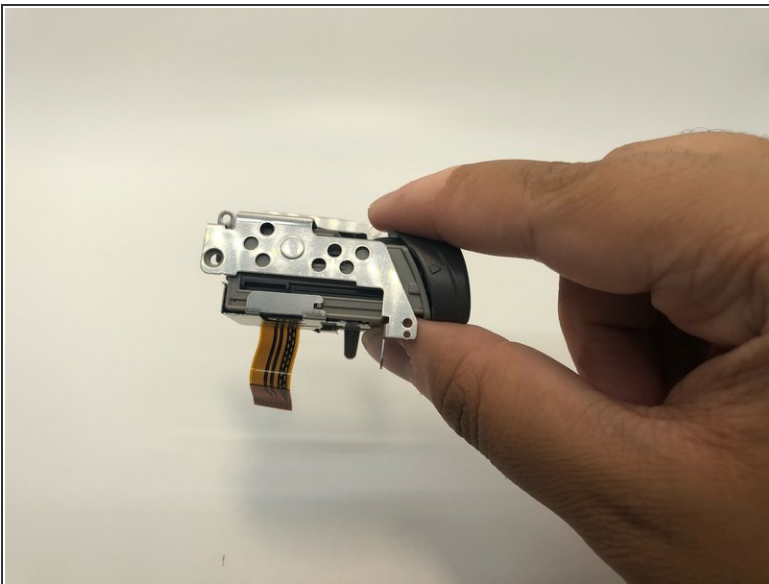
- Remove the three 5mm screws on the left side of the viewfinder with your Phillips #0 screwdriver.

## Step 14



- Gently pull the entire viewfinder away from the camera in a lifting motion away and make sure nothing is still connected with it.

## Step 15



- Separate the viewfinder from the metal piece.

To reassemble your device, follow these instructions in reverse order.