



# Disassembling Canon Pixma MP480 Rear and Side Panel

Disassembling the rear and side panels of the Canon Pixma MP480 allows access to the printer's components.

Written By: Kevin Cole



---

## INTRODUCTION

This guide will show you how to disassemble the back and side panel of the printer.

---

### TOOLS:

- [Phillips #1 Screwdriver](#) (1)
  - [iFixit Opening Tool](#) (1)
-

## Step 1 — Rear and Side Panel



- Remove the two 7.9 mm screws using a Phillips #1 screwdriver.

## Step 2



- Lift up the back cover to remove it.
  - ⓘ You may need to lift firmly as it requires quite a bit of force.

### Step 3



- Open the front tray.

### Step 4



- Open the scanner compartment.
- ⓘ Make sure the blue lever locks into place to keep the compartment open.

## Step 5



- Remove the blue lever from its slot by pushing it back and twisting clockwise.
- Close the scanner compartment and cover.

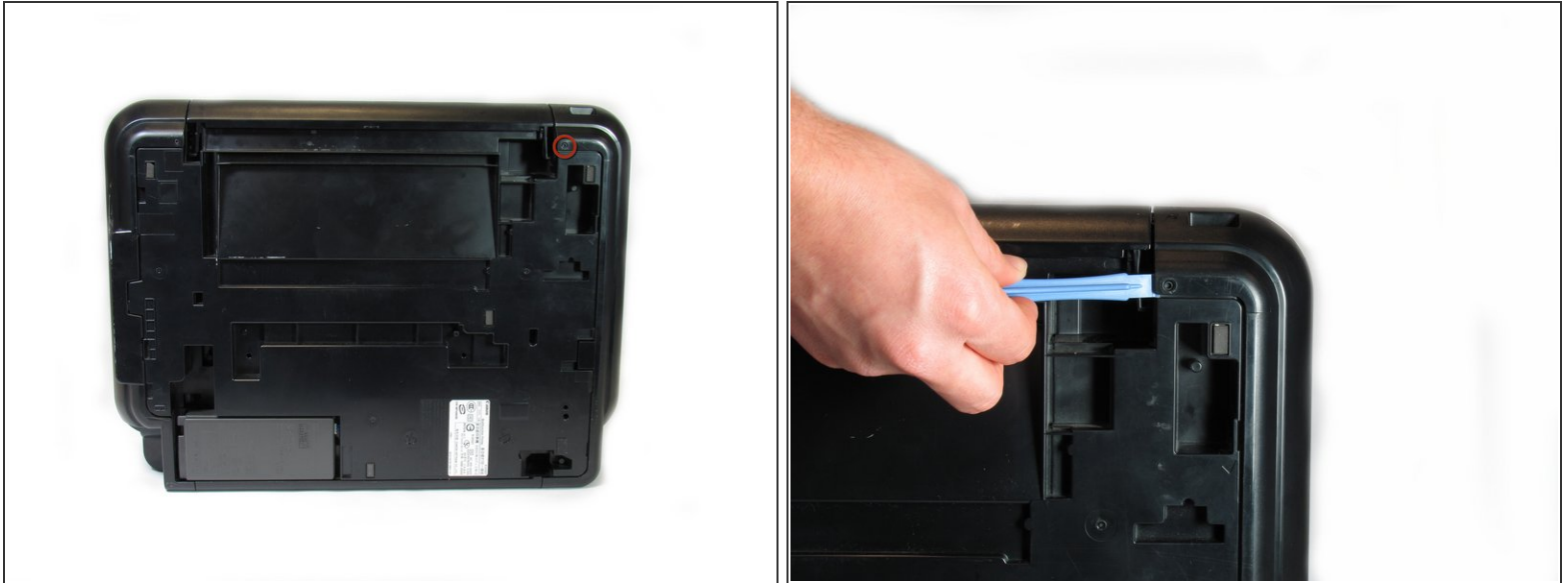
## Step 6



- Pry open the side cover with the plastic opening tool.



## Step 7



- Flip the printer over so that you are facing the bottom of the printer.
- Use the plastic opening tool to remove the corner of the side panel from the plastic pin.

## Step 8



- Use the plastic opening tool to loosen the side panel from the bottom of the printer.

To reassemble your device, follow these instructions in reverse order.