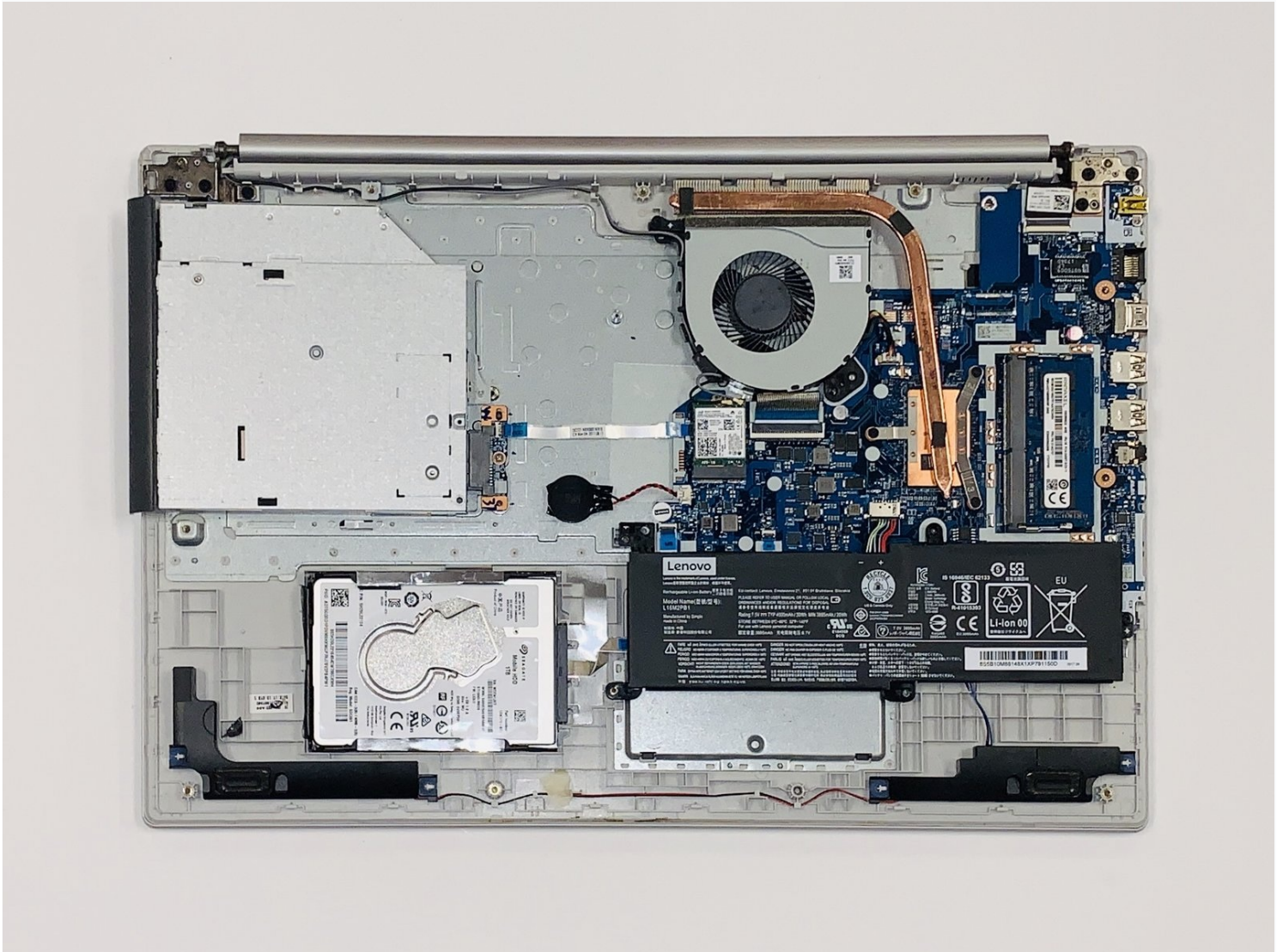




Lenovo Ideapad 320-17IKB Motherboard Replacement

This guide is about replacing the motherboard...

Written By: Korapat Dhanvarjor



INTRODUCTION

This guide is about replacing the motherboard of the Lenovo IdeaPad 320-17IKB.

The motherboard is a printed circuit board and foundation of a computer that allocates power and allows communication between the CPU, RAM, and all other computer hardware components. The motherboard is the most important component of the computer. An outdated or damaged motherboard negatively affects the performance of the computer and sometimes has to be replaced.

Before using this guide, check out the [Lenovo IdeaPad 320-17IKB Troubleshooting](#). Sometimes, the damaged back panel is the reason of disrupting the motherboard and other hardware. As a result, the motherboard does not have to be replaced in that case.

Be cautious when lifting the back panel off the laptop to not damage any hardware.

TOOLS:


[Phillips #00 Screwdriver](#) (1)
[iFixit Opening Tool](#) (1)
[Jimmy](#) (1)
[Tweezers](#) (1)

PARTS:

[5B20N86516 - Lenovo Laptop Motherboard - Genuine](#) (1)

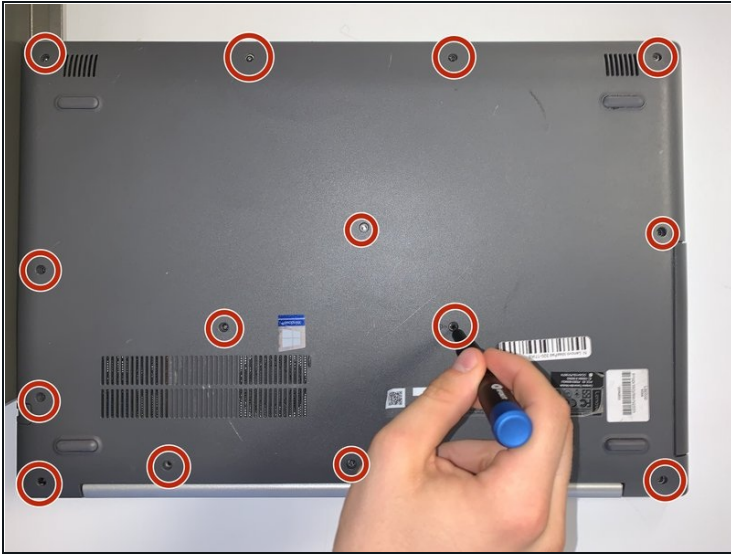
Step 1 — Back Panel



 Turn off and unplug the computer.

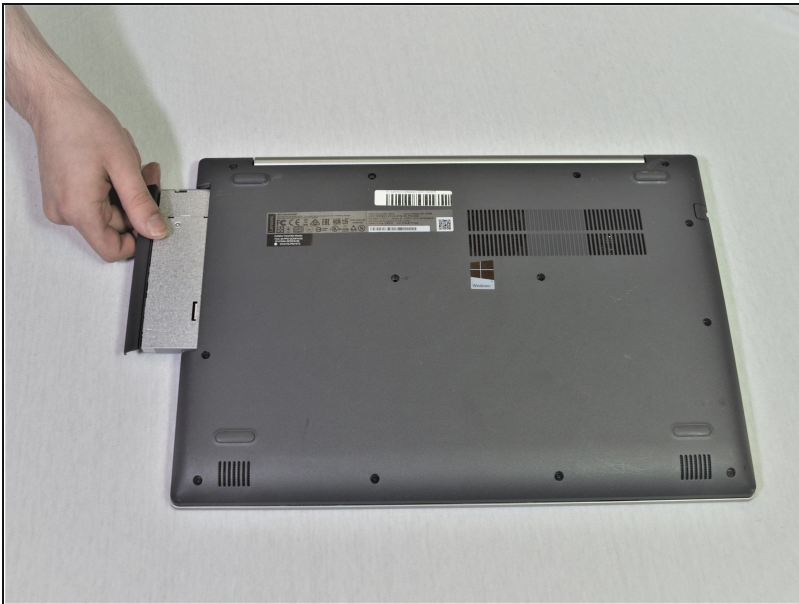
- Flip the laptop over so that the back panel is facing upwards.

Step 2



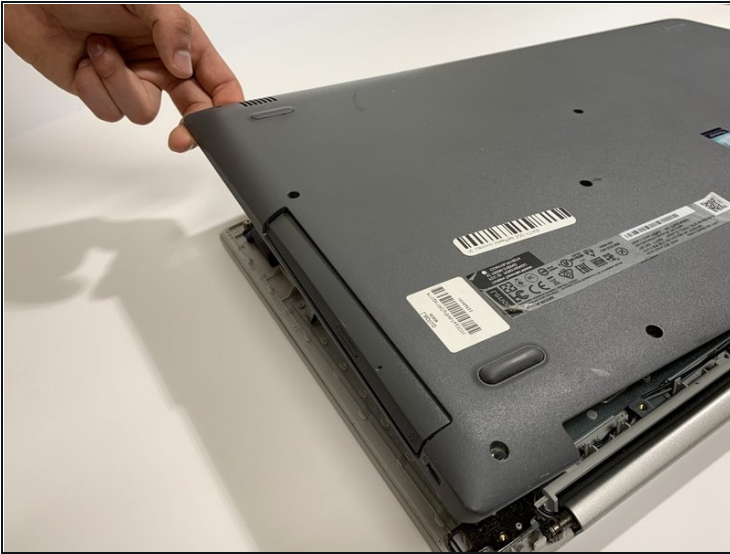
- Remove fourteen 7mm Phillips #00 screws from the back panel.

Step 3



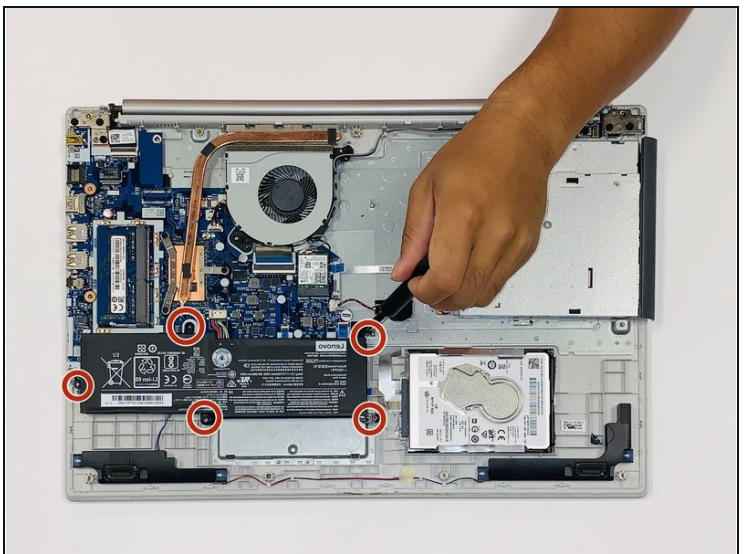
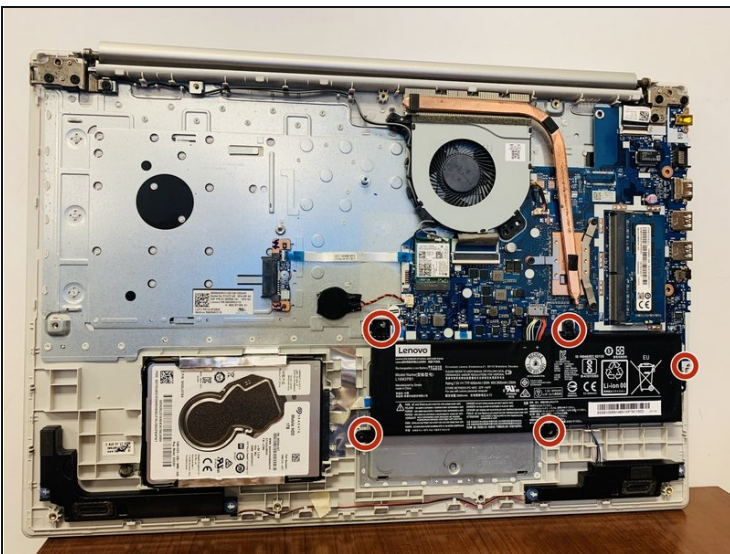
- Carefully remove the optical drive by pulling the bezel away from the laptop.

Step 4



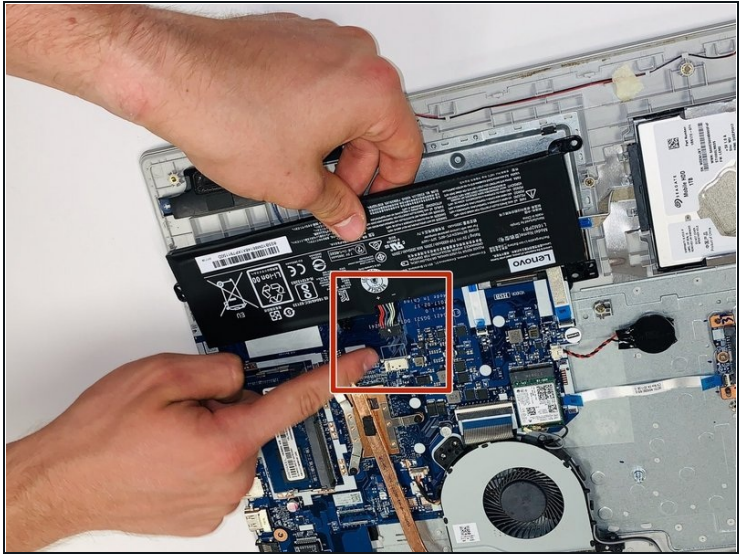
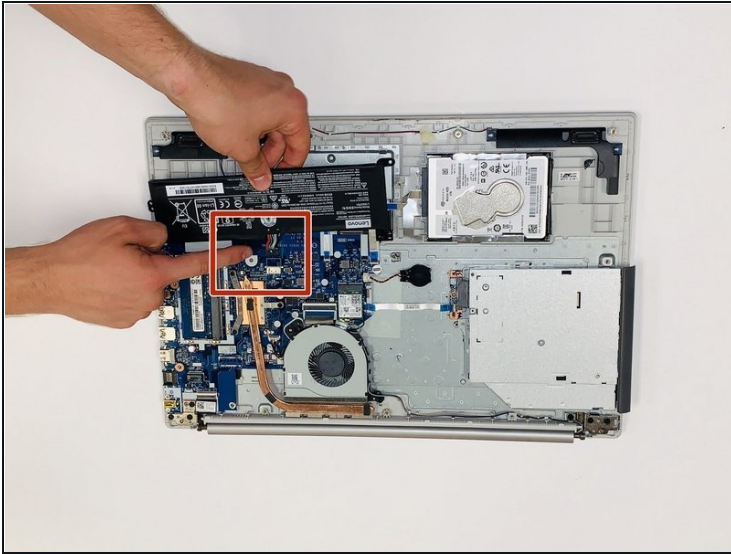
- Use your fingers or an opening tool to gently remove the back panel from the bottom of the laptop.
- Lay both sides of the laptop next to each other.

Step 5 — Battery



- Remove five 7mm Phillips #0 screws from the battery holder.

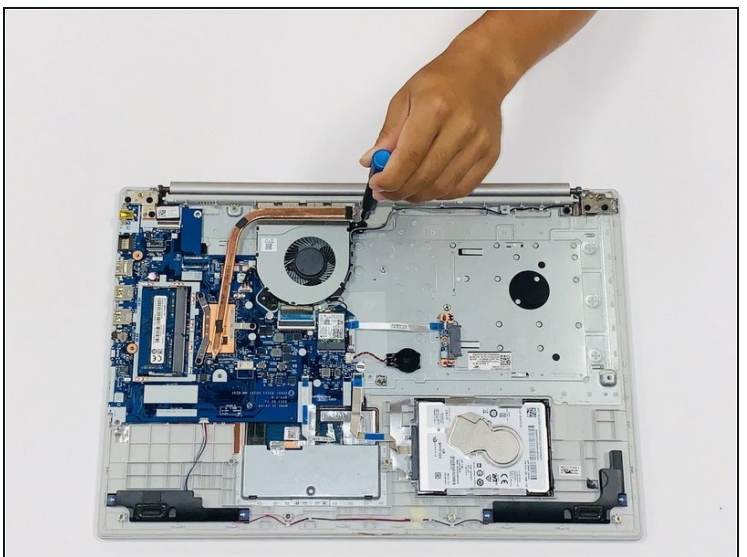
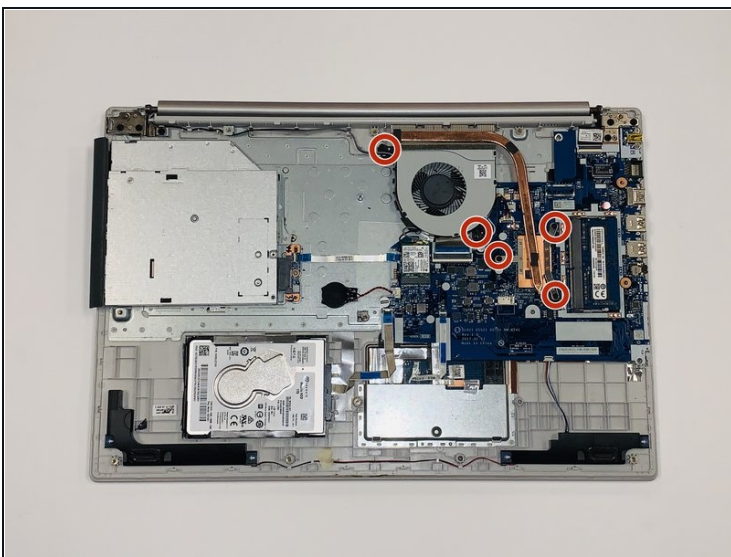
Step 6



- Pinch the connecting cord with one hand and pry the battery connector with the other hand, while gently pulling the connector straight out and towards the bottom edge of the base.

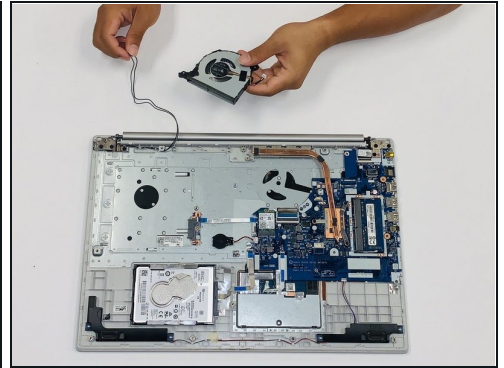
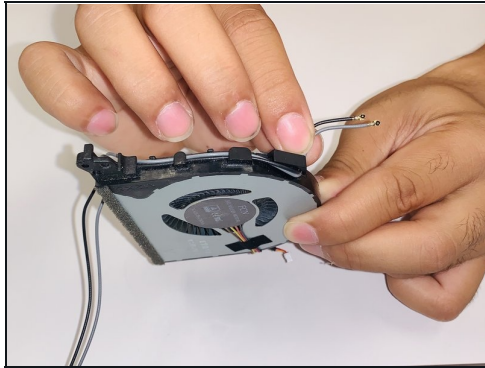
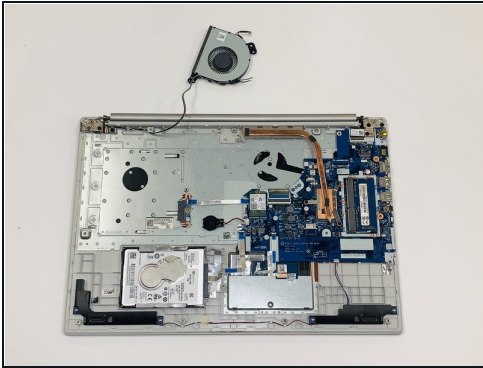
⚠ When removing the battery, use care to keep it flat and do not open the battery because it can result in fire or explosion.

Step 7 — Fan



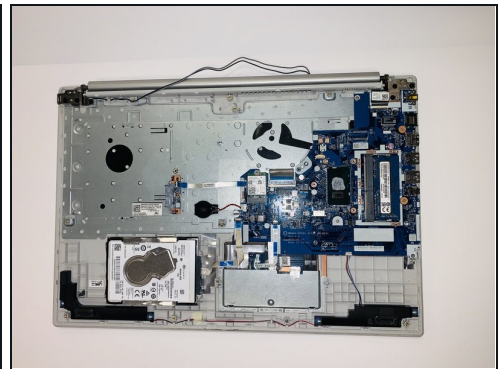
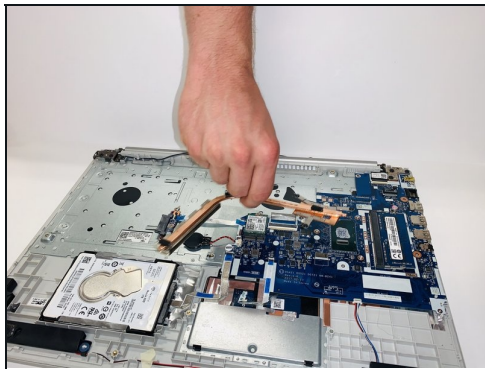
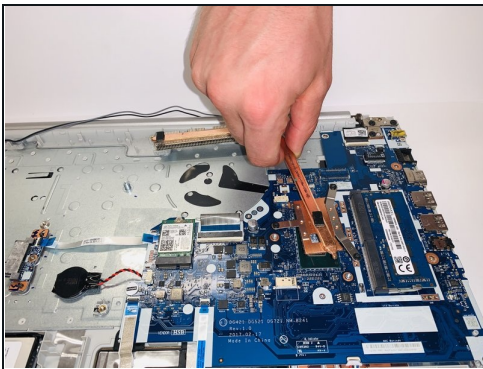
- Remove five 7mm Phillips #00 screws from the cooling fan.

Step 8



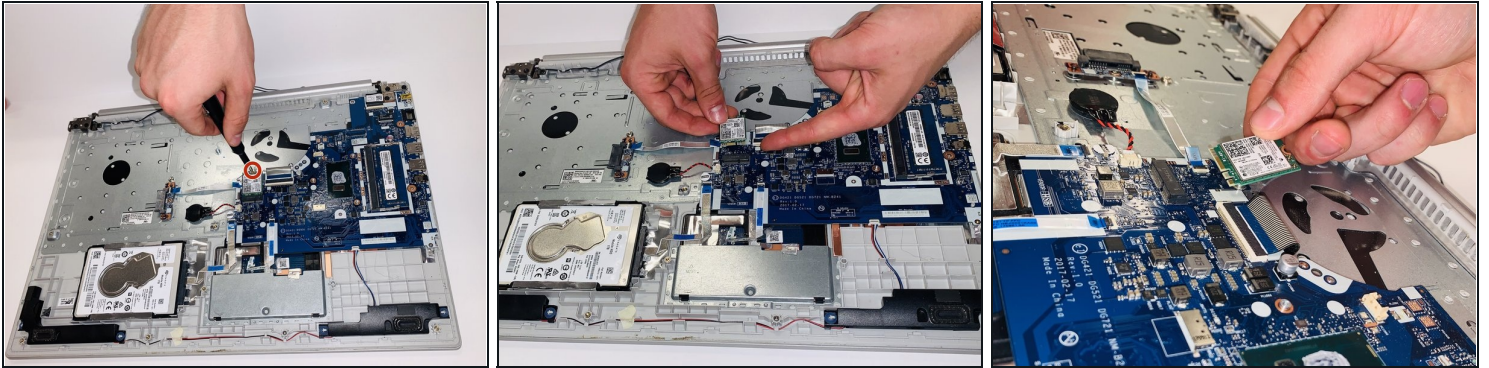
- Gently lift the fan assembly out of the laptop.
- Gently remove the connecting wires from the exterior of the fan by slowly "weaving" the cord between the ridges of the fan.

Step 9 — Heat Sink



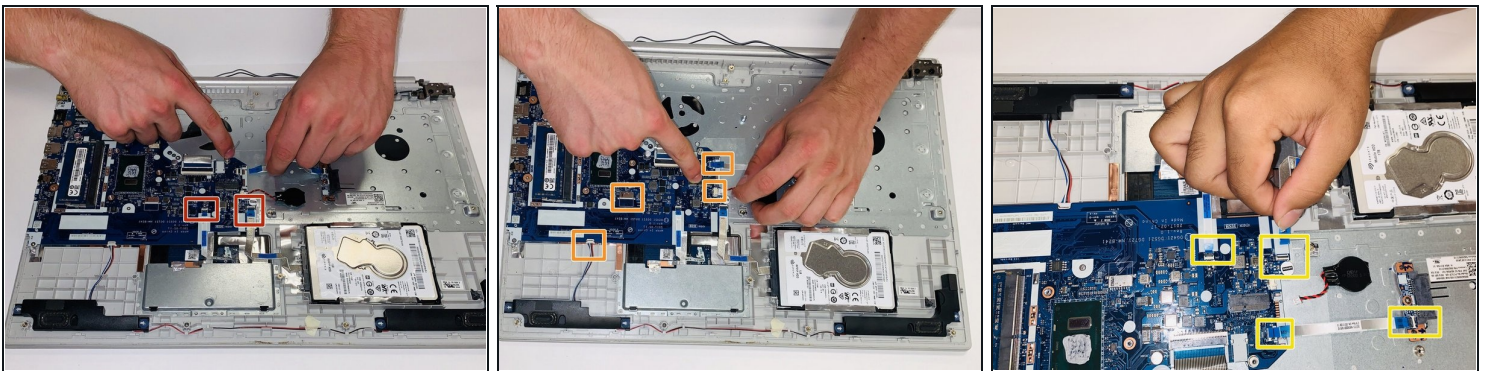
- Gently lift and remove the heat sink and set it aside.

Step 10 — Wi-Fi Card



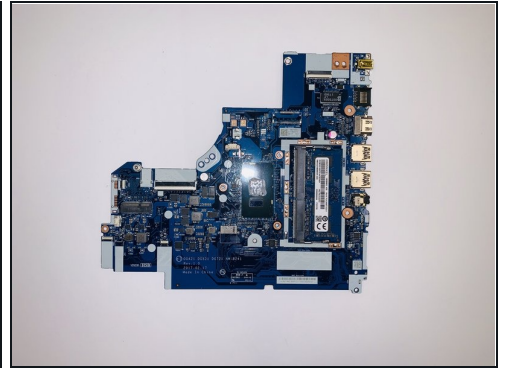
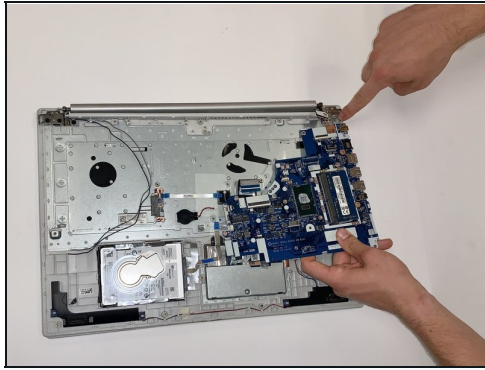
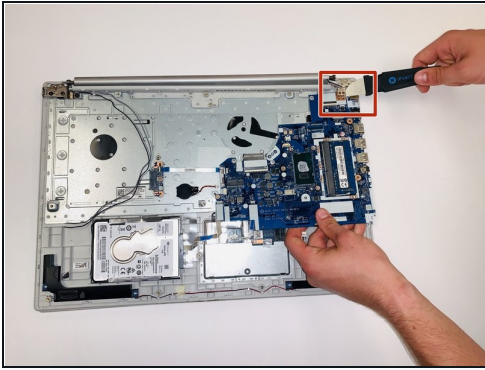
- Remove the single 3mm Phillips #0 screw from the Wi-Fi card.
- Pull the Wi-Fi card straight out of the laptop.

Step 11 — Motherboard



- Gently pull the blue ribbon marked with "MB" connectors.
- Gently remove the other connectors in the picture by pulling them straight out.
- Blue connectors encased in a black holder may require tweezers to unclasp the connector for removal.

Step 12



- Using a Jimmy, gently pry the motherboard from under the corner screw holder with one hand and pull the motherboard out with the other.

To reassemble your device, follow these instructions in reverse order.