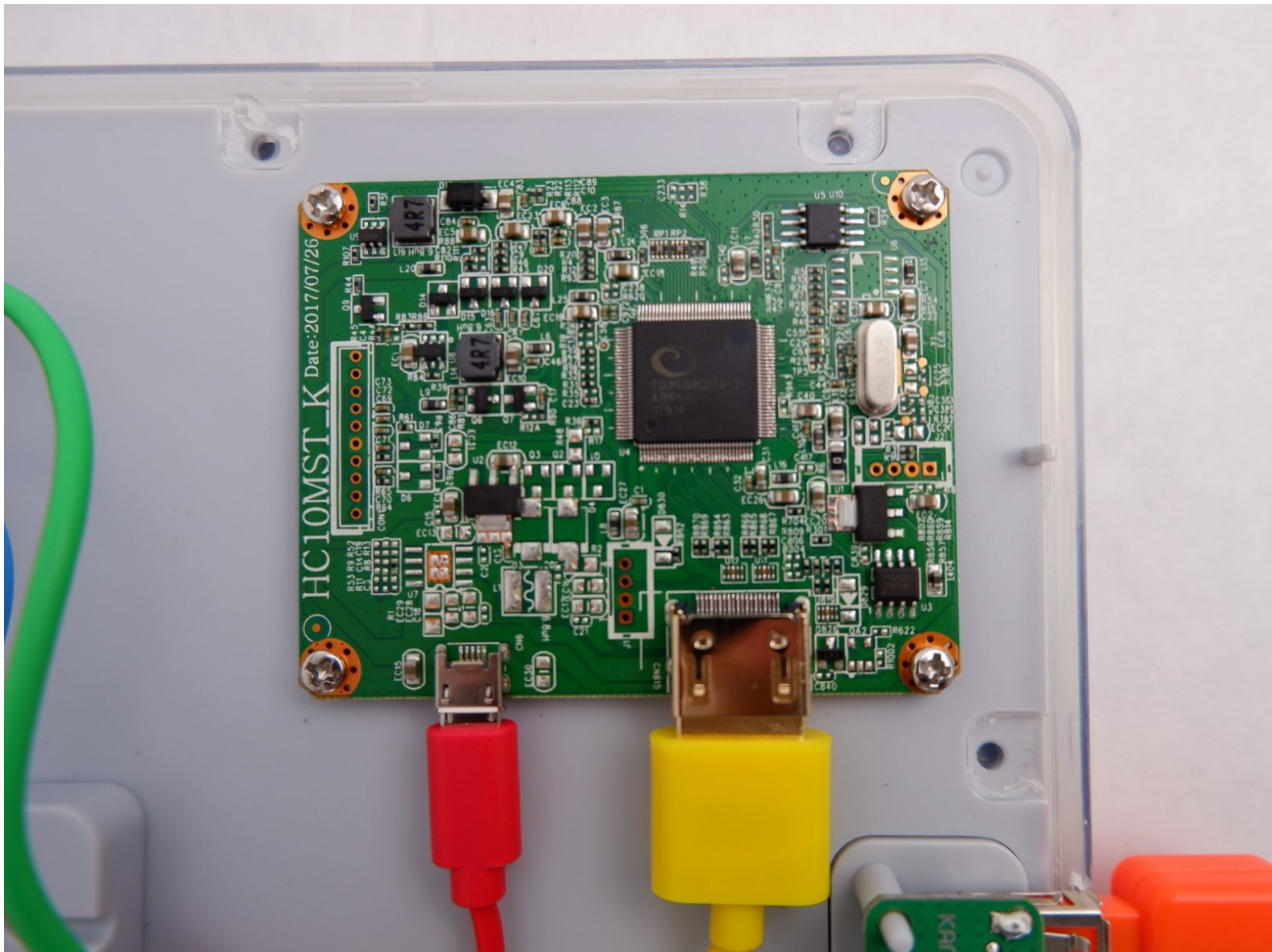




Kano Computer Kit Complete Display Board Replacement

How to replace the Display Board on the back of the Kano Computer Kit screen in the top right corner.

Written By: Julia Sherrill



INTRODUCTION

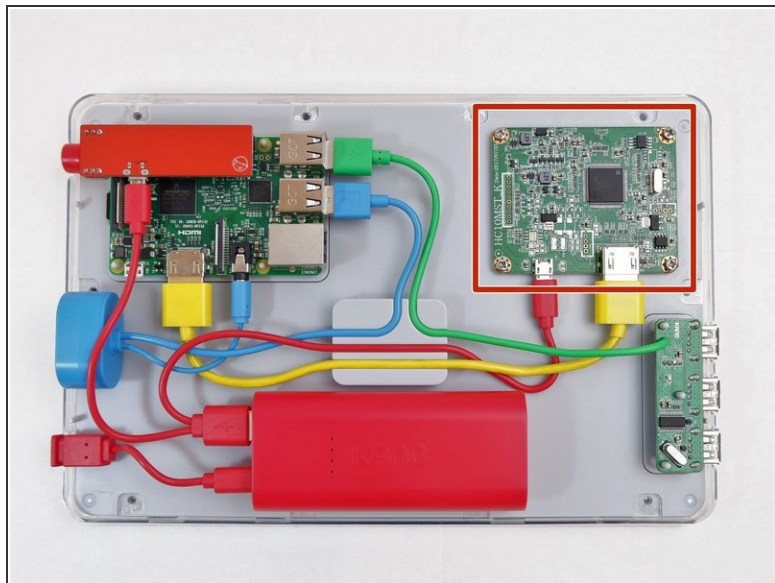
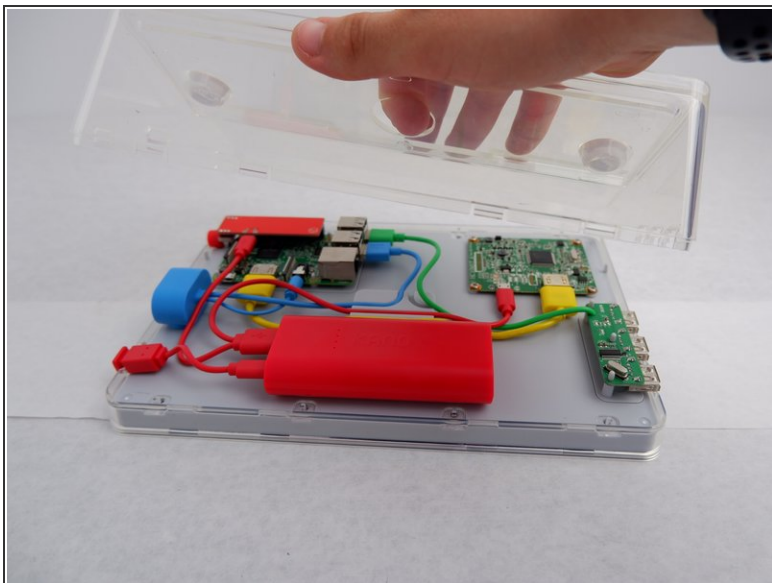
If your computer continuously gives off a burning odor or it keeps crashing after bugs have supposedly been fixed, chances are you need to replace your Display driver. This guide will show you exactly how to do that through simple, easy to follow steps with pictures to help you along. The only tool you will be needing is a Phillips #1 Screwdriver for the four 8.5mm screws to complete this guide.



TOOLS:

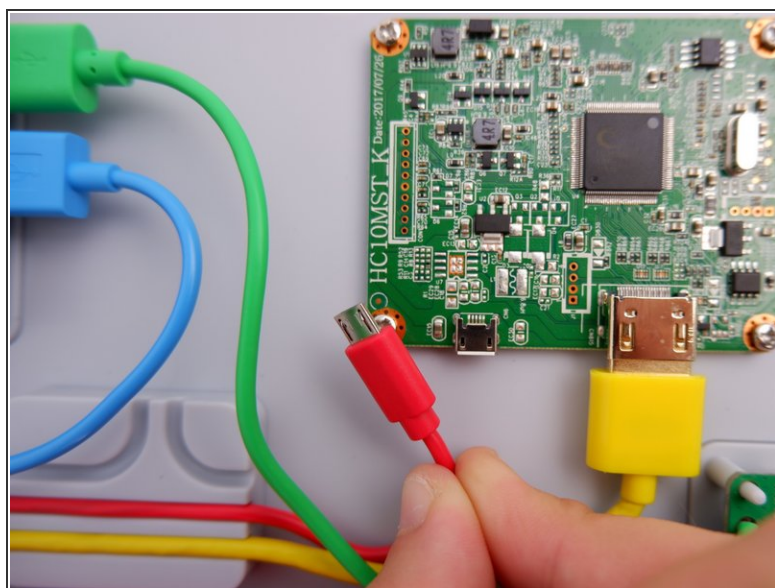
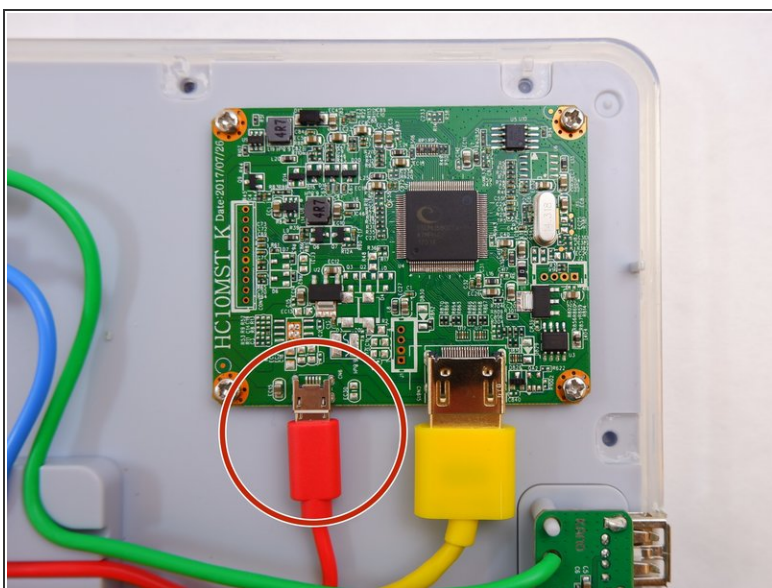
- [Phillips #1 Screwdriver](#) (1)
-

Step 1 — Display Board



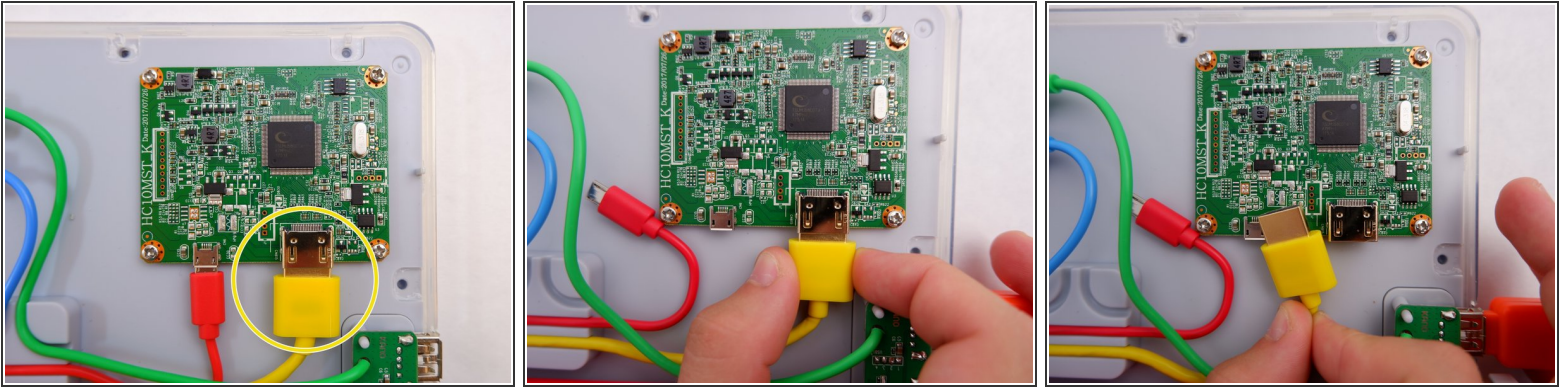
- Take off the clear backing of the computer and set it aside.
- The Display board is located in the top right corner of the case.

Step 2



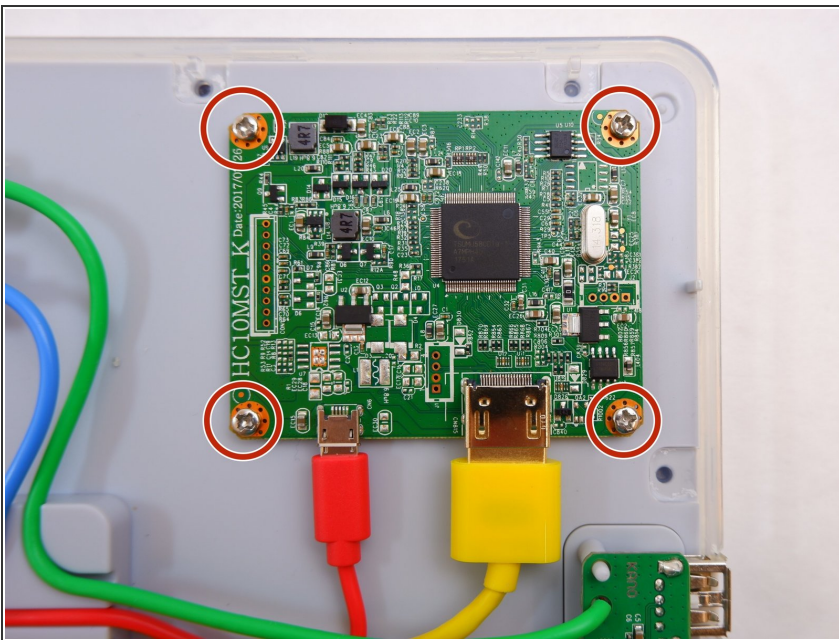
- Always disconnect the battery before performing repairs.
- Remove the power cable (Circled in red) from the board.

Step 3



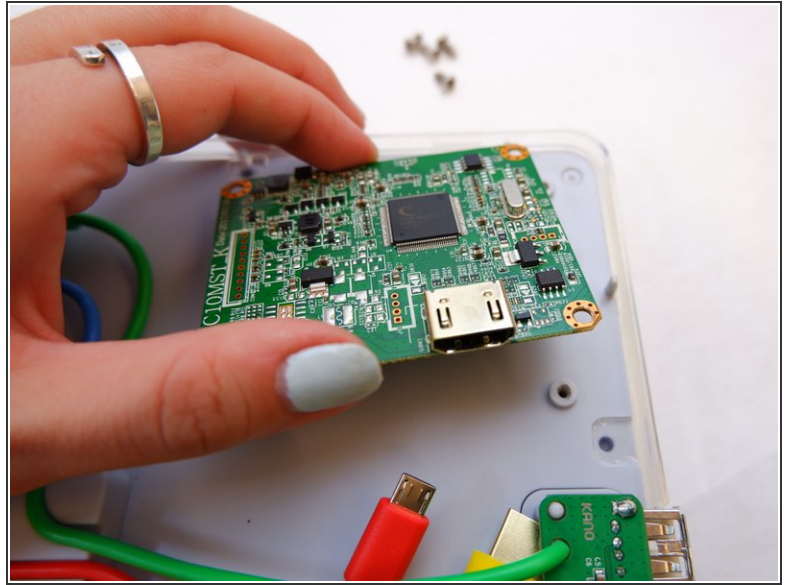
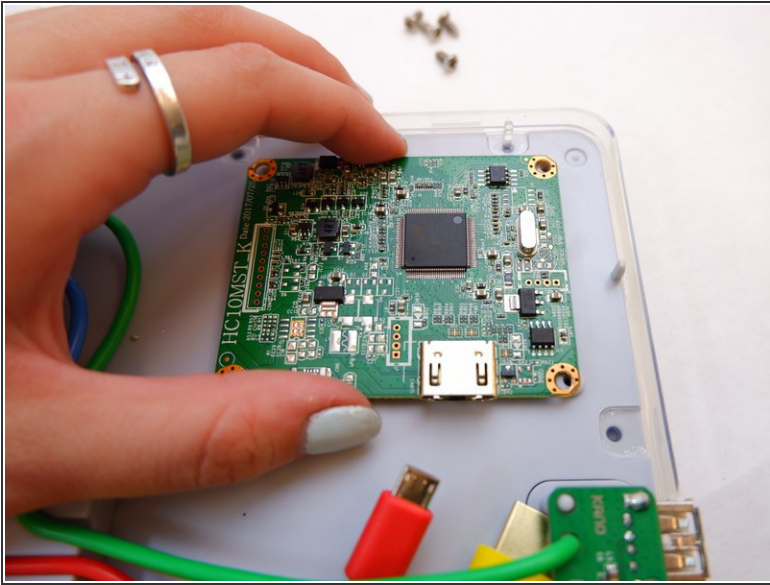
- Unplug the HDMI cable (Circled in Yellow) from the board

Step 4



- Unscrew the four 8.5mm screws with your Phillips #1 Screwdriver.

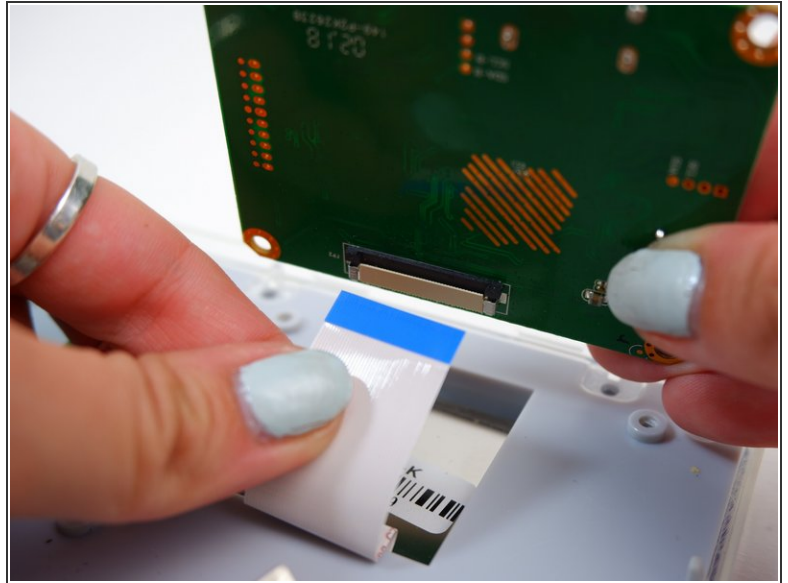
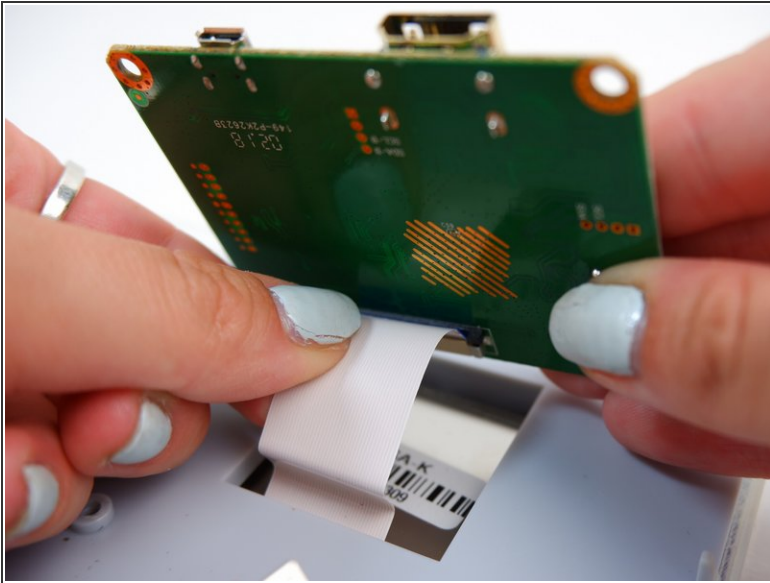
Step 5



- Lift the board off the back of the screen.

⚠ Be gentle as there is a ribbon cable on the underside that will prevent the board from being removed completely.

Step 6



- Disconnect the white ribbon cable that you find underneath the board.
- ⓘ Be careful; it will take some force.

To reassemble your device, follow these instructions in reverse order.