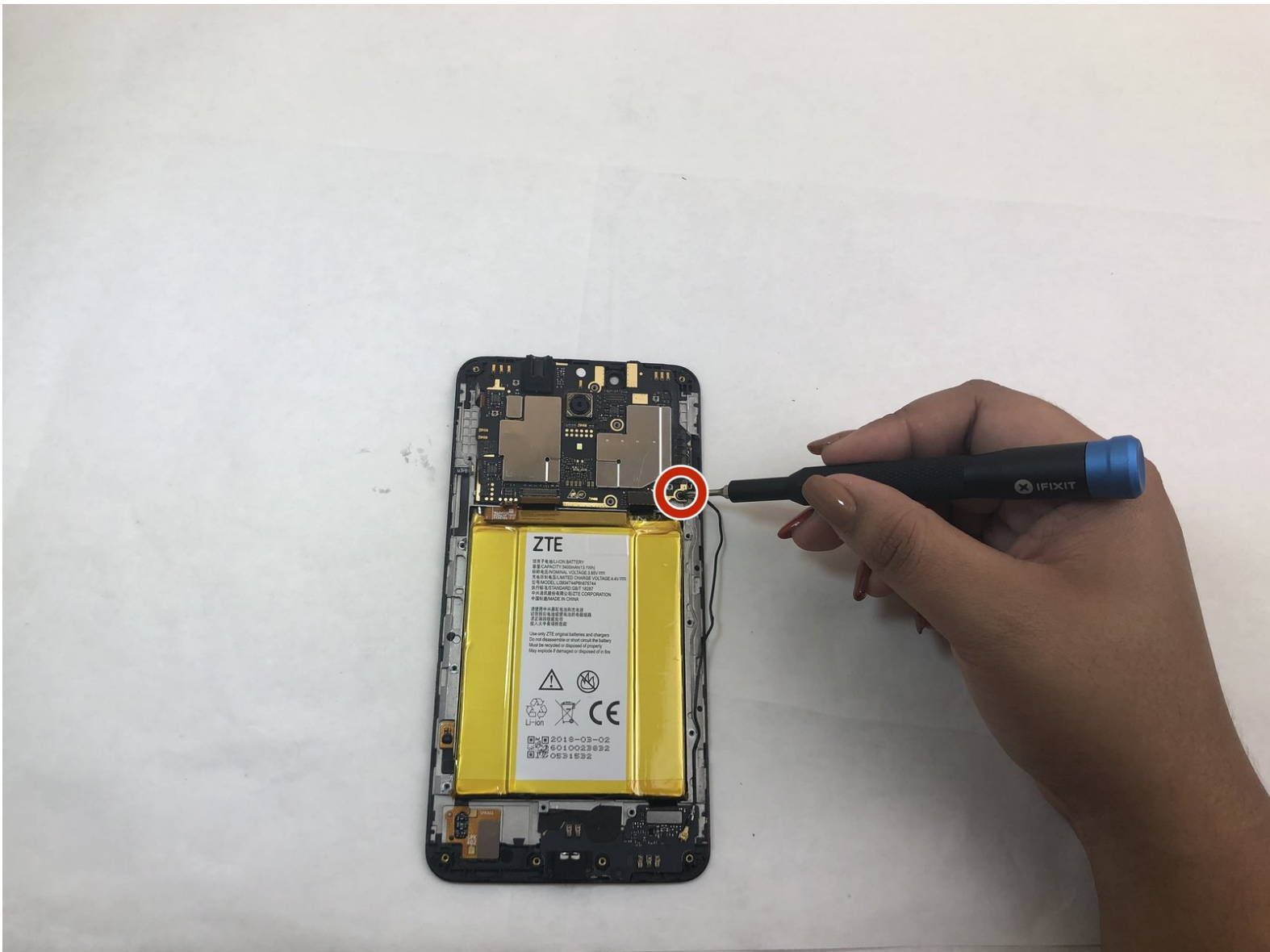




ZTE Blade X Max Motherboard Replacement

How to replace the motherboard of the ZTE Blade X Max.

Written By: Celeste Holmes



INTRODUCTION

If primary functions of your ZTE Blade X Max are failing—failure to power on, multiple functions failing—and you have gone through the [troubleshooting guide](#), then you may have to replace your motherboard.

This guide requires removing the back of the phone, which is not meant to be removed by the consumer. You will have to use heating products to complete this guide. If you are using the [iFixit iOpener](#), or a heating pad, be sure to follow the instructions for that particular product.

TOOLS:

- [Jimmy](#) (1)
 - [iOpener](#) (1)
 - [Tweezers - Pro/ESD/Angled](#) (1)
 - [Phillips #000 Screwdriver](#) (1)
-

Step 1 — Back Cover



- Use the iOpener or heating pad to heat around the edges of the phone to melt the adhesive.
- ⓘ It will take about ten minutes for the adhesive to be heated enough to remove the backing.
- ⓘ You will have to reheat the iOpener or heating pad a few times.

Step 2



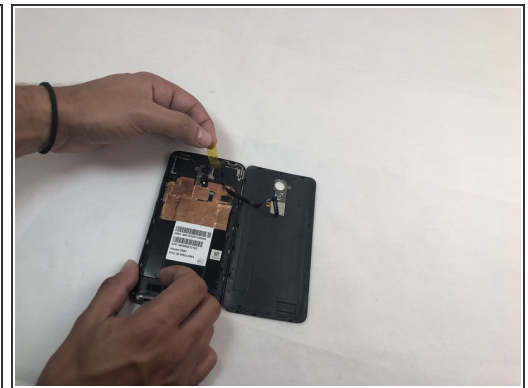
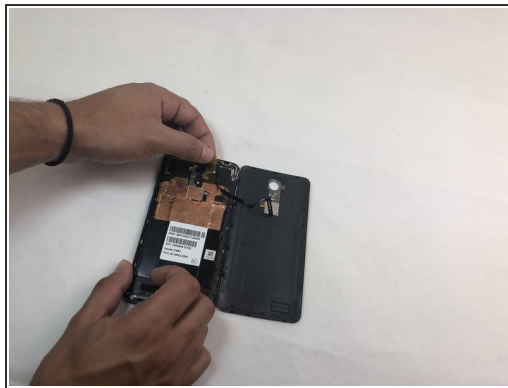
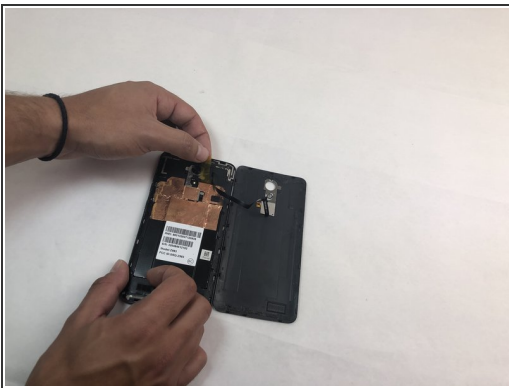
- Slide the Jimmy along the under backing and lightly push the plastic up.
- ⓘ You will hear a snapping sound as you slide the Jimmy along the backing. This is from the closures releasing. There should be seven total closures on either side of the device, and three on the top and bottom.

Step 3



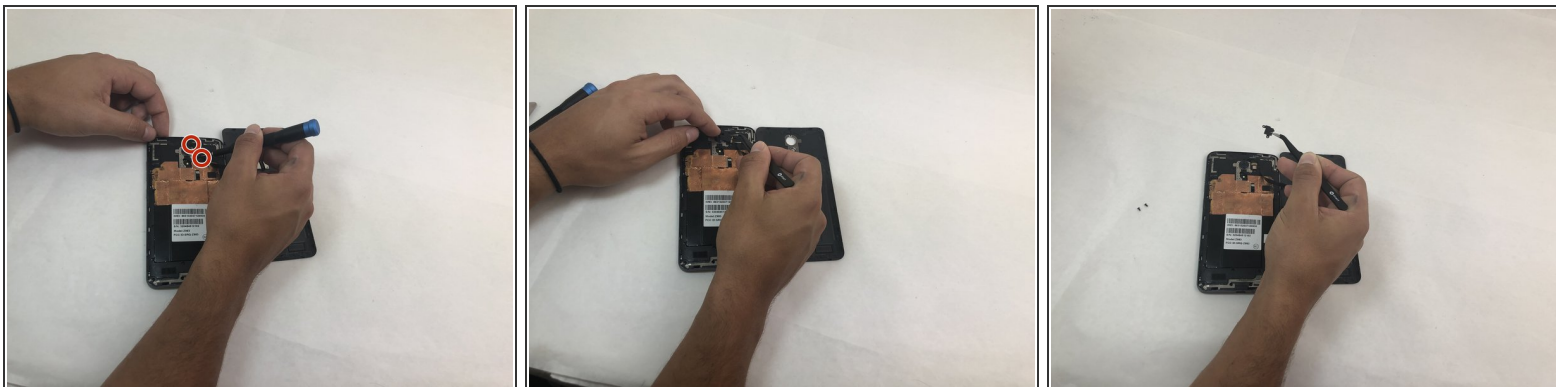
- Carefully remove the backing from the phone once the closures are released.
- ⓘ If you do not open all of the closures on the backing **do not** attempt to pry it off.
- ⚠ Be careful when opening the back of the phone. The fingerprint scanner is connected by a thin film that will tear if pulled too roughly.

Step 4



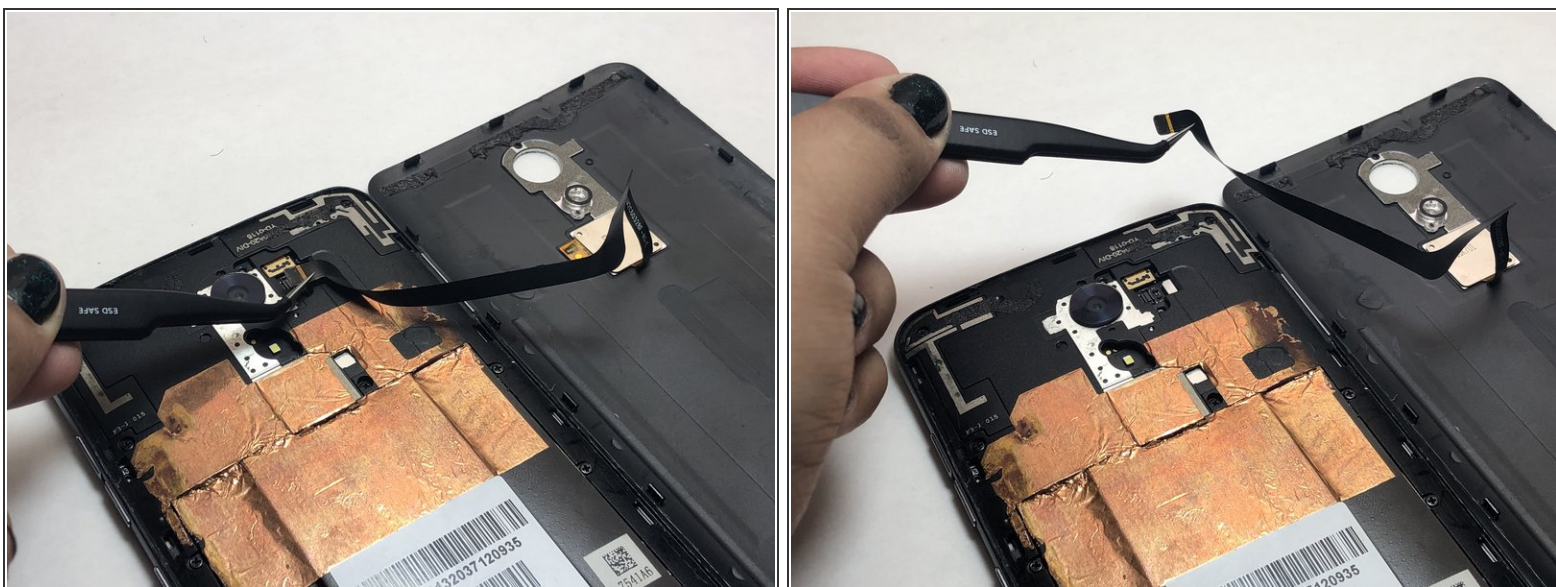
- Remove the opaque yellow sticker that indicates where the fingerprint scanner is connected to the back of the device.

Step 5



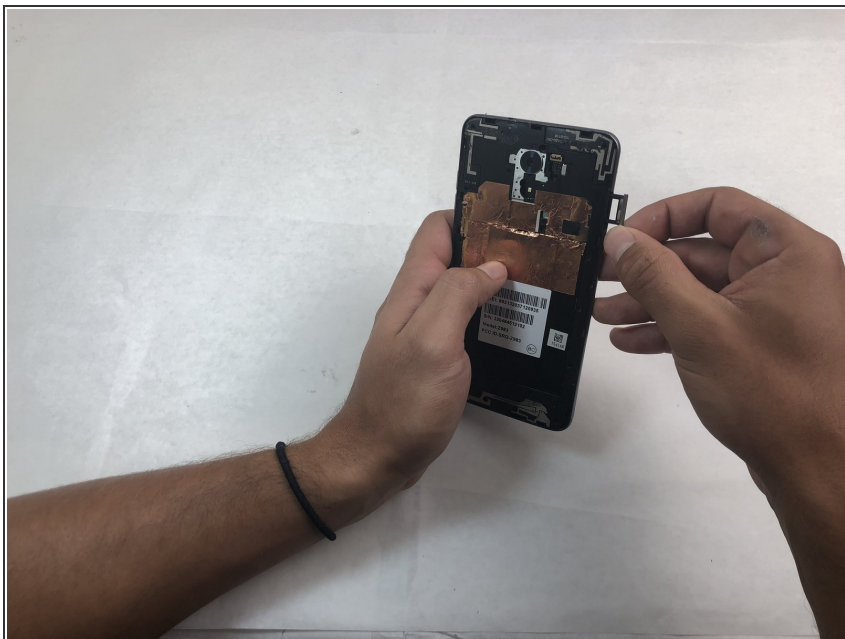
- Remove the two 1mm Phillips #000 screws on the small panel that was underneath the sticker.
- Use the tweezers to remove the panel.

Step 6



- Use the tweezers to pull at the base of the film to remove the fingerprint scanner.

Step 7 — Midframe



- Remove the SD and SIM cards by pulling out the card tray from the slot on the right side of the device.

Step 8



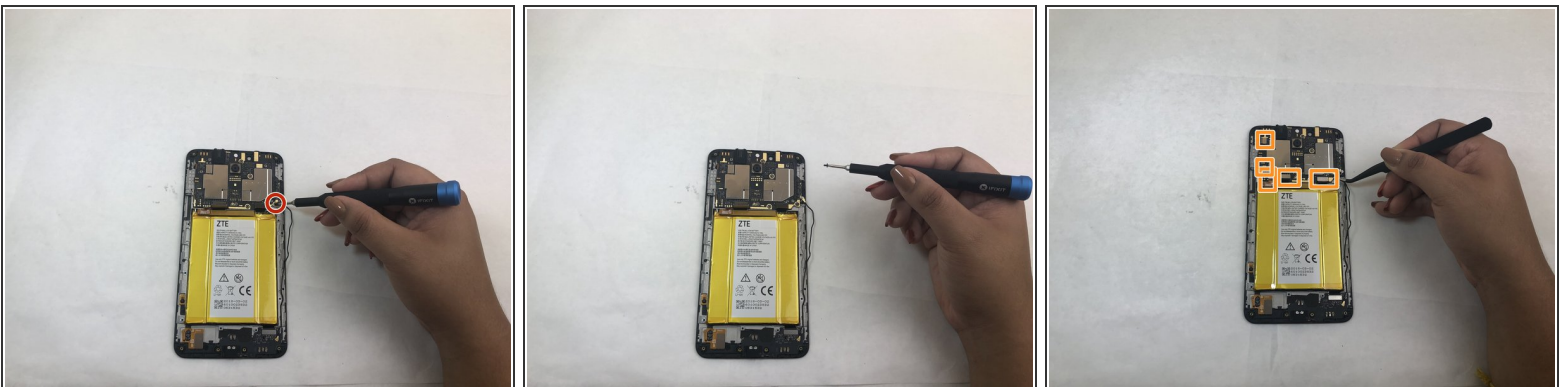
- Remove the sixteen 1mm Phillips #000 screws from the midframe of the phone.

Step 9



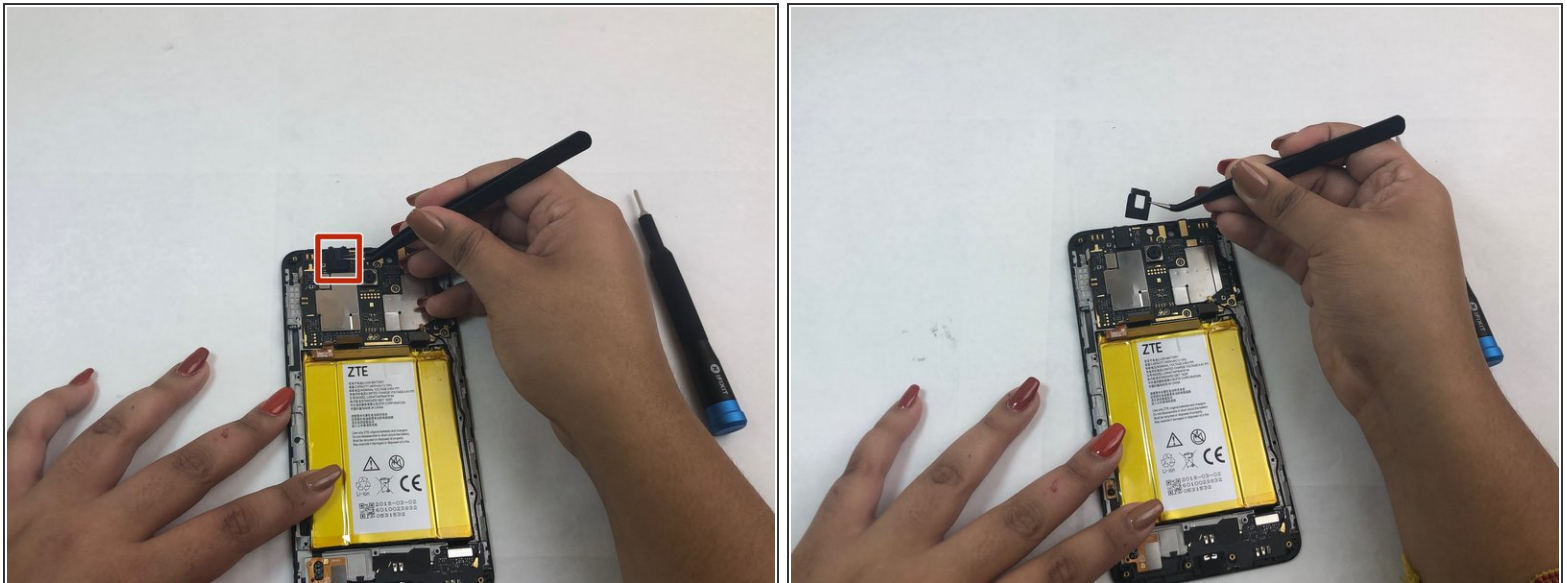
- Use the Jimmy to remove the midframe from the device.

Step 10 — Motherboard



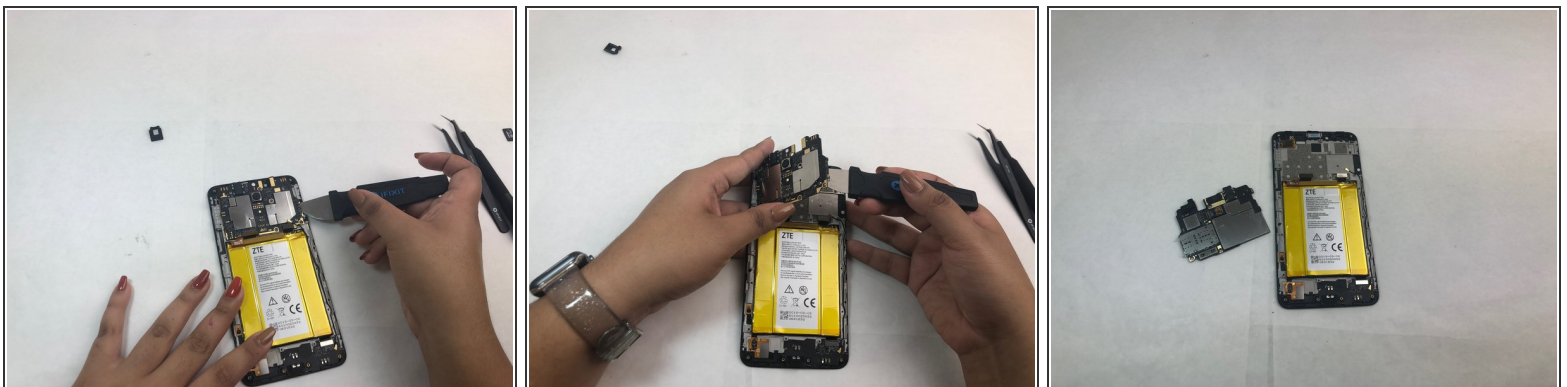
- Remove the single 1mm Phillips #000 screw from the motherboard.
- Detach the five flat connectors.

Step 11



- Use tweezers to remove the protective foam surrounding the headphone jack at the top left of the device.
- ⓘ The foam is attached with a thin layer of adhesive which is easy to remove.

Step 12



- Use the Jimmy to pry the motherboard out of the phone.

To reassemble your device, follow these instructions in reverse order.