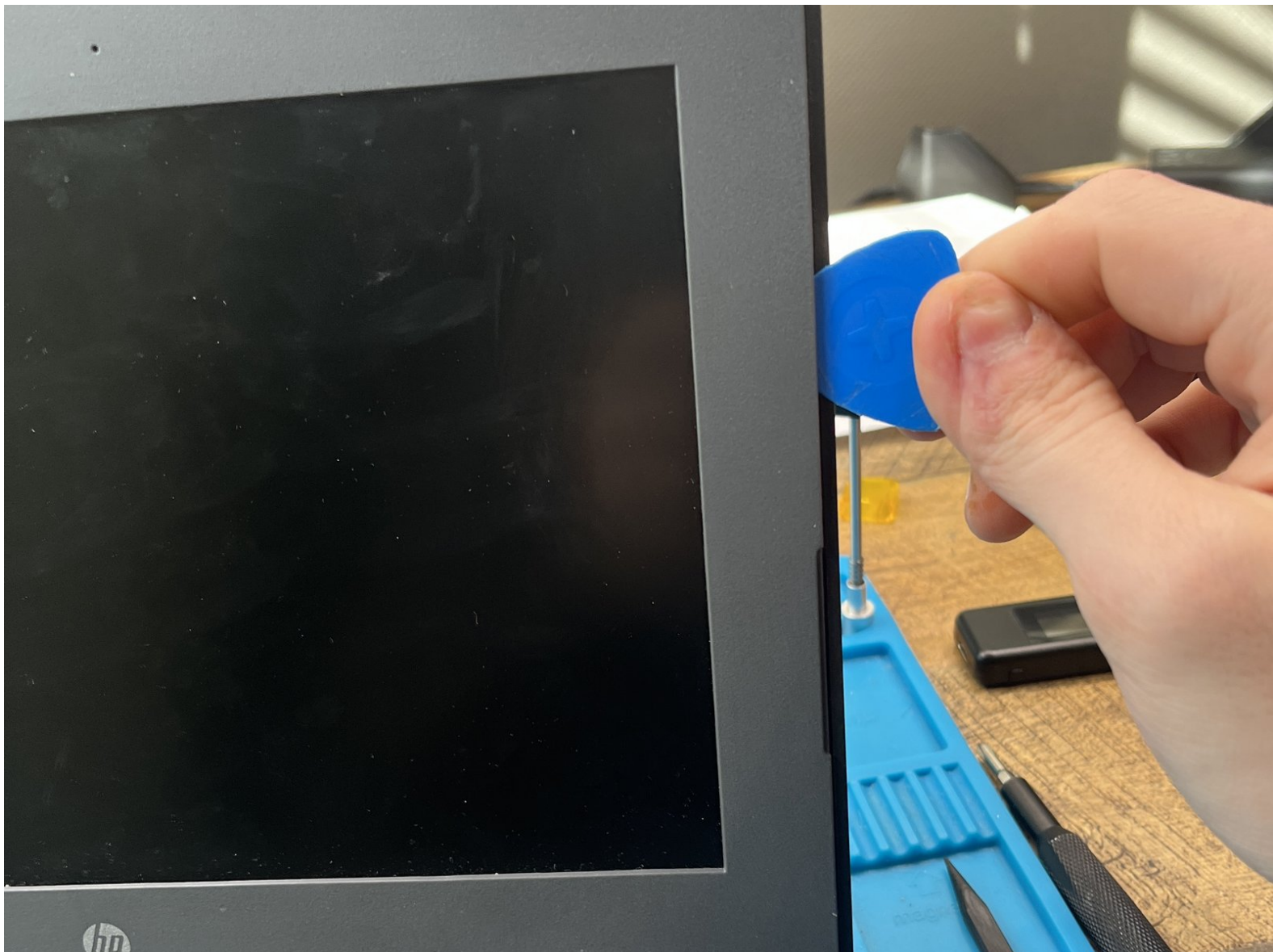




HP Chromebook 11 G6 EE Screen Replacement

Replace the screen on an HP Chromebook 11 G6 EE

Written By: Korey Brand



INTRODUCTION

This guide will show you how to replace a broken or defective screen on a Chromebook 11 G6 EE.



TOOLS:

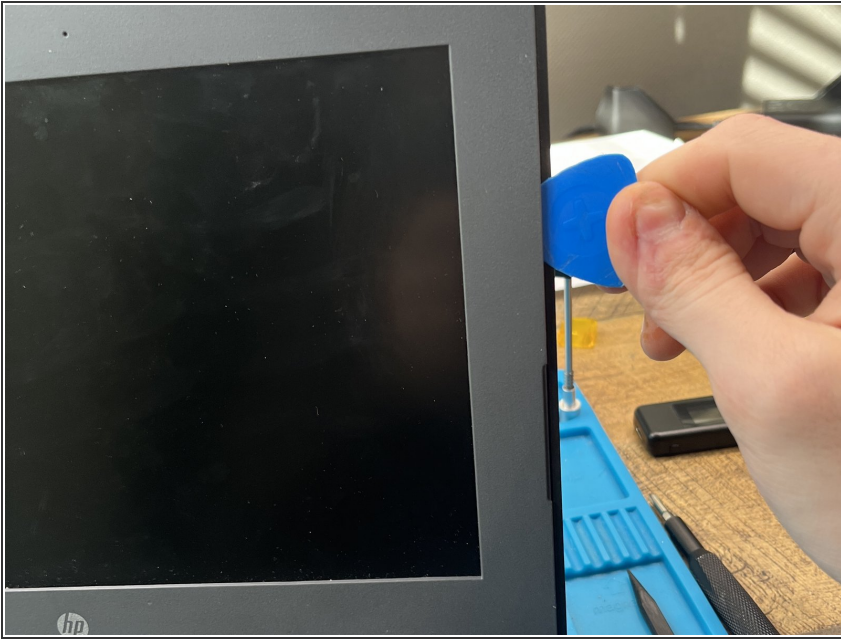
- [Spudger](#) (1)
- [Phillips #0 Screwdriver](#) (1)
- [Tweezers](#) (1)
- [Small Needle Nose Pliers](#) (1)



PARTS:

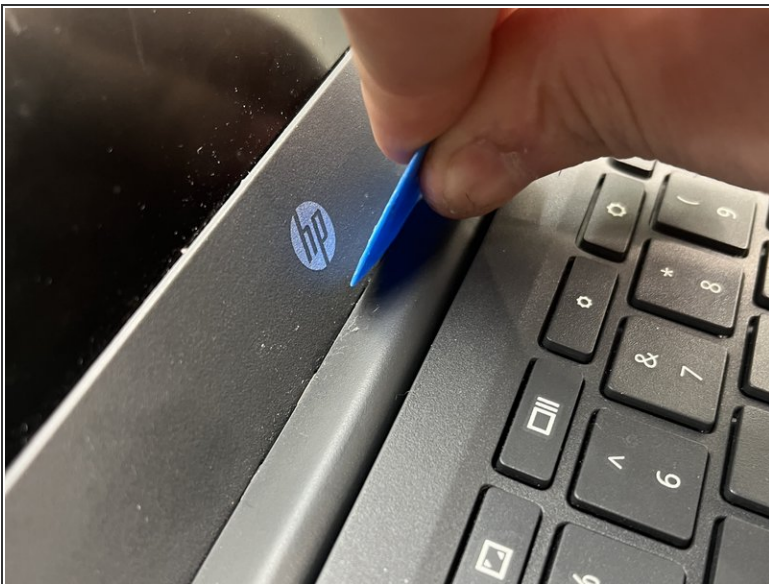
- [HP Chromebook screen](#) (1)

Step 1 — Remove the plastic frame



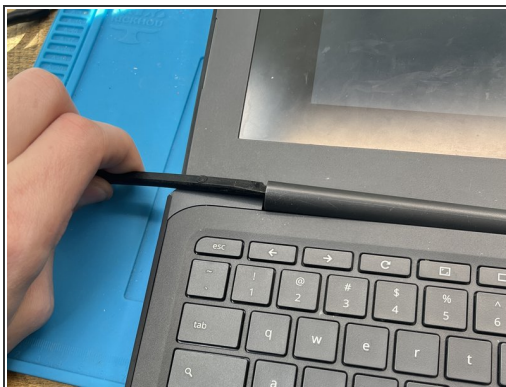
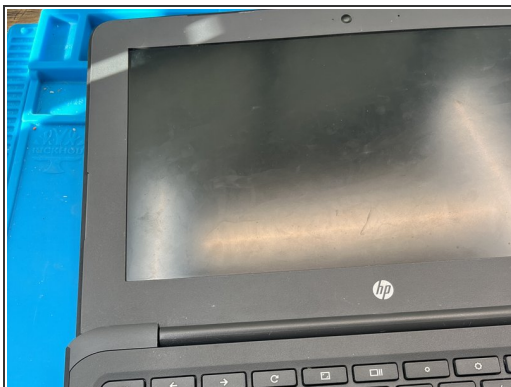
- Use a plastic pick or spudger around the edges of the bezel to pop the clips loose.
- ⓘ If the LCD is already damaged and you're going to replace it, you can use the pick to break the adhesive along the inside edge of the bezel. If you want to preserve the LCD, use a heat gun to soften the adhesive before removing the bezel.

Step 2



- Push down on the seam between the hinge cover and bezel to release the clips holding the two together.
- When successful, there will be a small seam visible, as shown in the second photo.

Step 3 — Pry up the hinge cover



- Open the computer to 180° to make it easier to remove the hinge cover
- Insert a spudger into one side and pry up to remove the cover

Step 4 — Remove screws from the screen



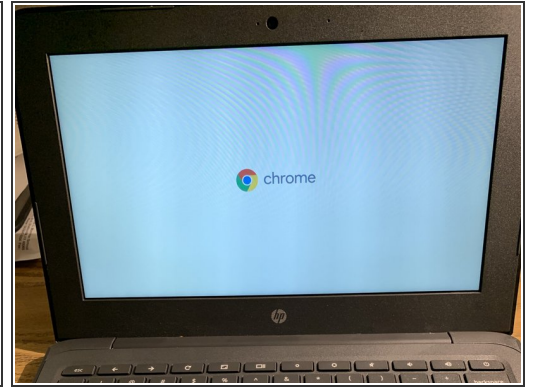
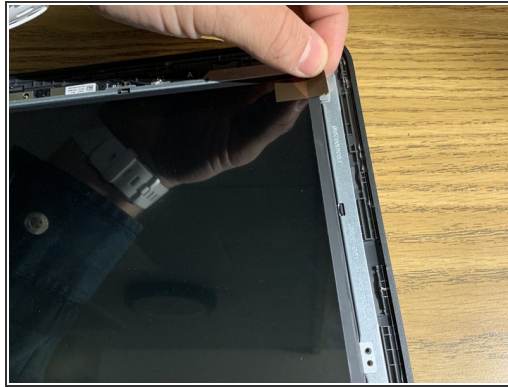
- Remove the four M2.5x2 PH#0 screws holding the LCD in the display.

Step 5 — Remove the broken screen



- Flip the screen over onto the keyboard.
- Peel the sticker holding the screen connector in place.
- **The sticker is difficult to remove. I use a spudger to get it started and grab it with pliers or tweezers to pull it up.**
- Pull the connector loose. It should pop out very easily

Step 6 — Install the new screen



- Slide the connector into the socket on the new screen.
- **The new screens do not come with the sticker. I recommend pulling the sticker off of the old screen and using it to hold the connector in place for the new screen.**
- Remove the protective film from the new screen and re-attach the screen with the screws.
- Snap the plastic frame back into place. It should snap back in very easily but be careful not to put extra pressure on the screen.

Step 7



- Before reattaching the bezel, we have to apply new adhesive tape to the inside edge in place of the old adhesive. Before that, we have to remove the old adhesive
- The easiest way is to use the flat end of a fresh spudger to scrape the adhesive away. If it's being stubborn, a quick few seconds with a heat gun makes things a whole lot easier.

 Be careful to not warp the bezel with excessive heat.

- Add new tape

Check the screen to make sure it is functioning properly and be sure to check the camera to make sure the connection did not come loose during repair.