



# Xbox One S All Digital Edition Bottom Metal Shield Replacement

Follow this guide if the bottom metal shield is broken or if other issues arise.

Written By: Jules Hajjar



## INTRODUCTION

This guide shows the steps necessary to get the motherboard separated from the bottom part of the metal chassis of the Xbox One S All Digital Edition (Model 1681). The chassis might need to be replaced in the console experiences power issues or if the unit has fallen on the ground in the past. Disconnect all cables prior to disassembly.



### TOOLS:

- [TR10 Torx Security Screwdriver](#) (1)
- [iFixit Opening Tools](#) (1)
- [T8 Torx Security Bit Screwdriver](#) (1)



### PARTS:

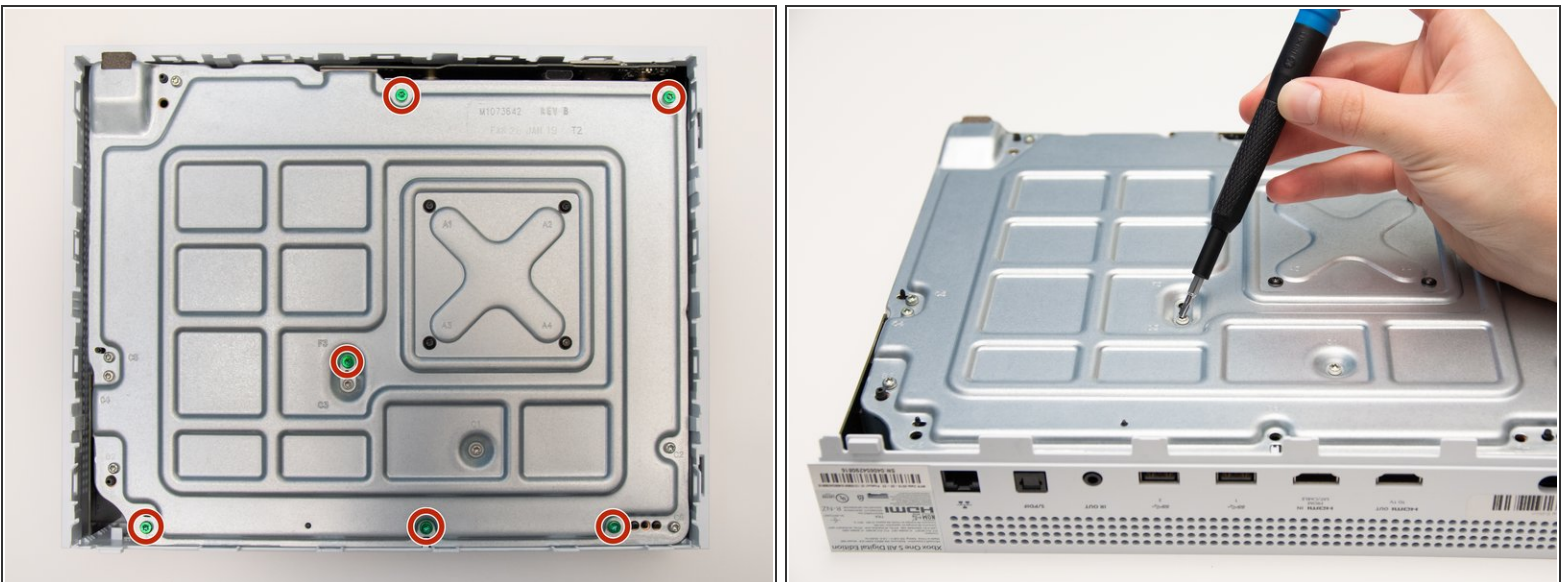
- [Xbox One S Chassis and Rear Panel](#) (1)

## Step 1 — Plastic Enclosure



- Position the iFixit Opening Tool's riveted edge in between the top and bottom cover of the plastic enclosure.
- Apply downward pressure on the iFixit Opening Tool until the security clip unlocks.
- Repeat on different points of the plastic enclosure until the bottom cover is removed.

## Step 2



- Remove the six 50 mm green screws (labeled F1-F6) from the metal chassis using a Torx 10 screwdriver.
- ⓘ These screws hold the top cover of the plastic enclosure to the chassis.

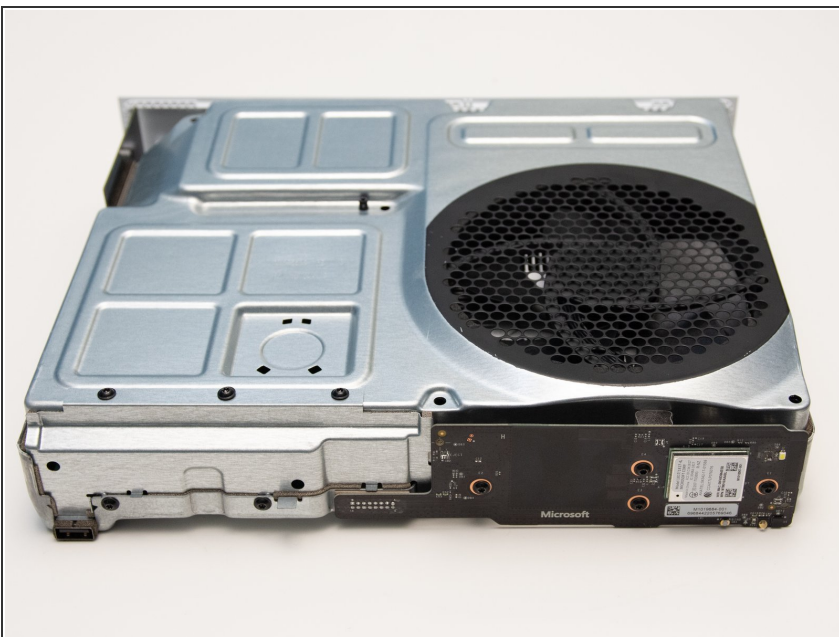


### Step 3



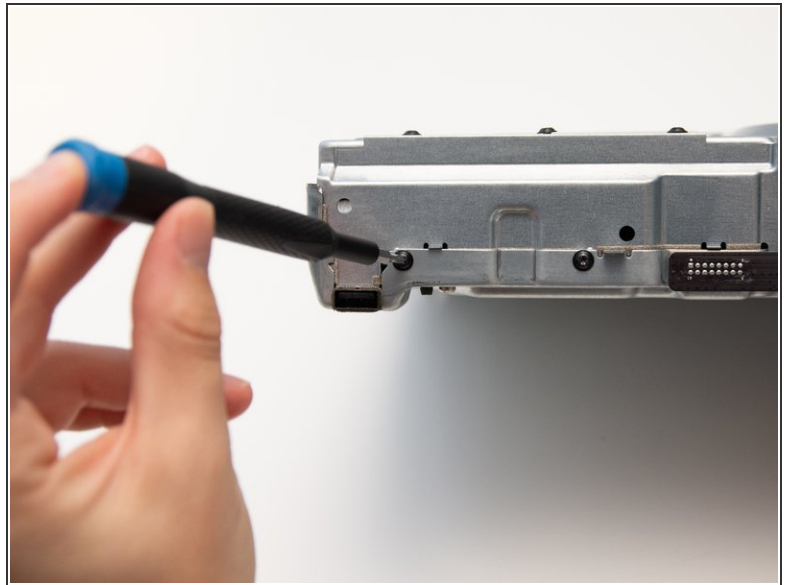
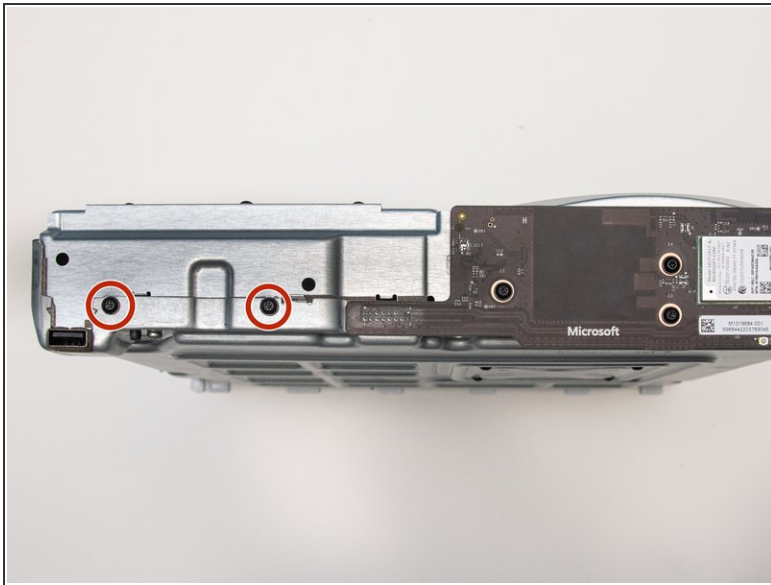
- Apply pressure to peel off the sides of the casing.
- Separate the metal chassis from the top cover, lifting the back of the chassis up and away from the top cover.
- *i* The plastic back panel is meant to stay attached to the metal chassis.

### Step 4



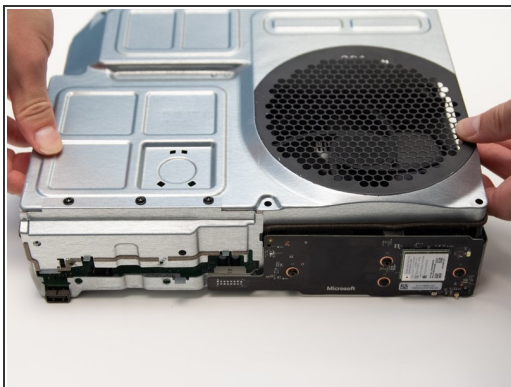
- Flip the metal enclosure so that the fan cover is on top.

## Step 5 — Top Metal Shield



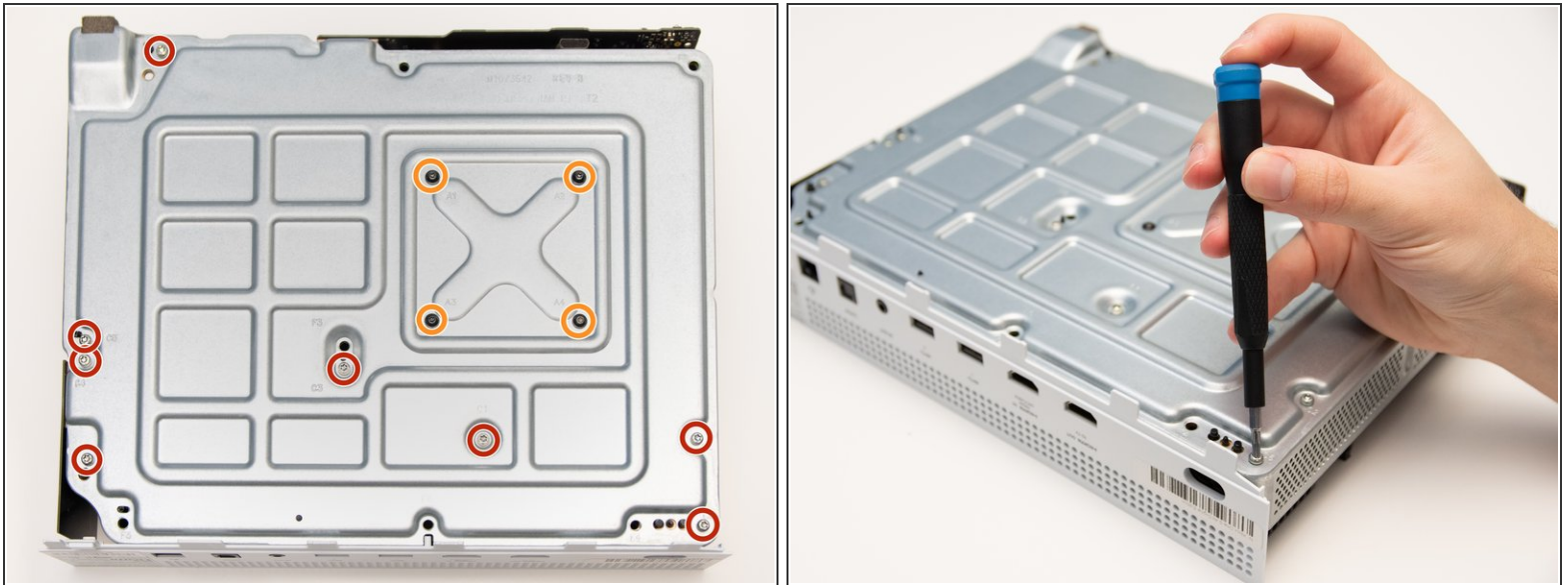
- Remove the two 15mm screws from the front panel using the Torx T8 screwdriver.

## Step 6



- Carefully slide the top metal case off the frame.
- ⓘ This may require shifting the case side to side as you slide up.

## Step 7 — Bottom Metal Shield



- Remove the eight 10mm screws from the bottom of the metal casing using the Torx T9 screwdriver.
- Remove the four 15mm screws from the bottom of the heatsink fastener using the Torx T8 screwdriver.

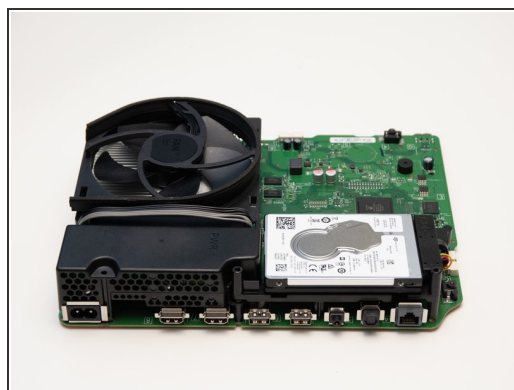
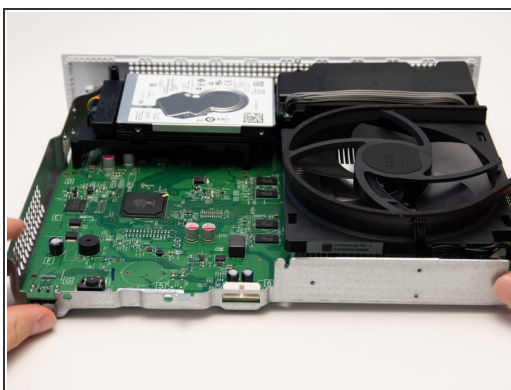
## Step 8



- Remove the two plastic pieces from the motherboard.



## Step 9



- Lift the motherboard up from the metal chassis.
- ⓘ The motherboard should easily separate from the metal chassis.

To reassemble your device, follow these instructions in reverse order.