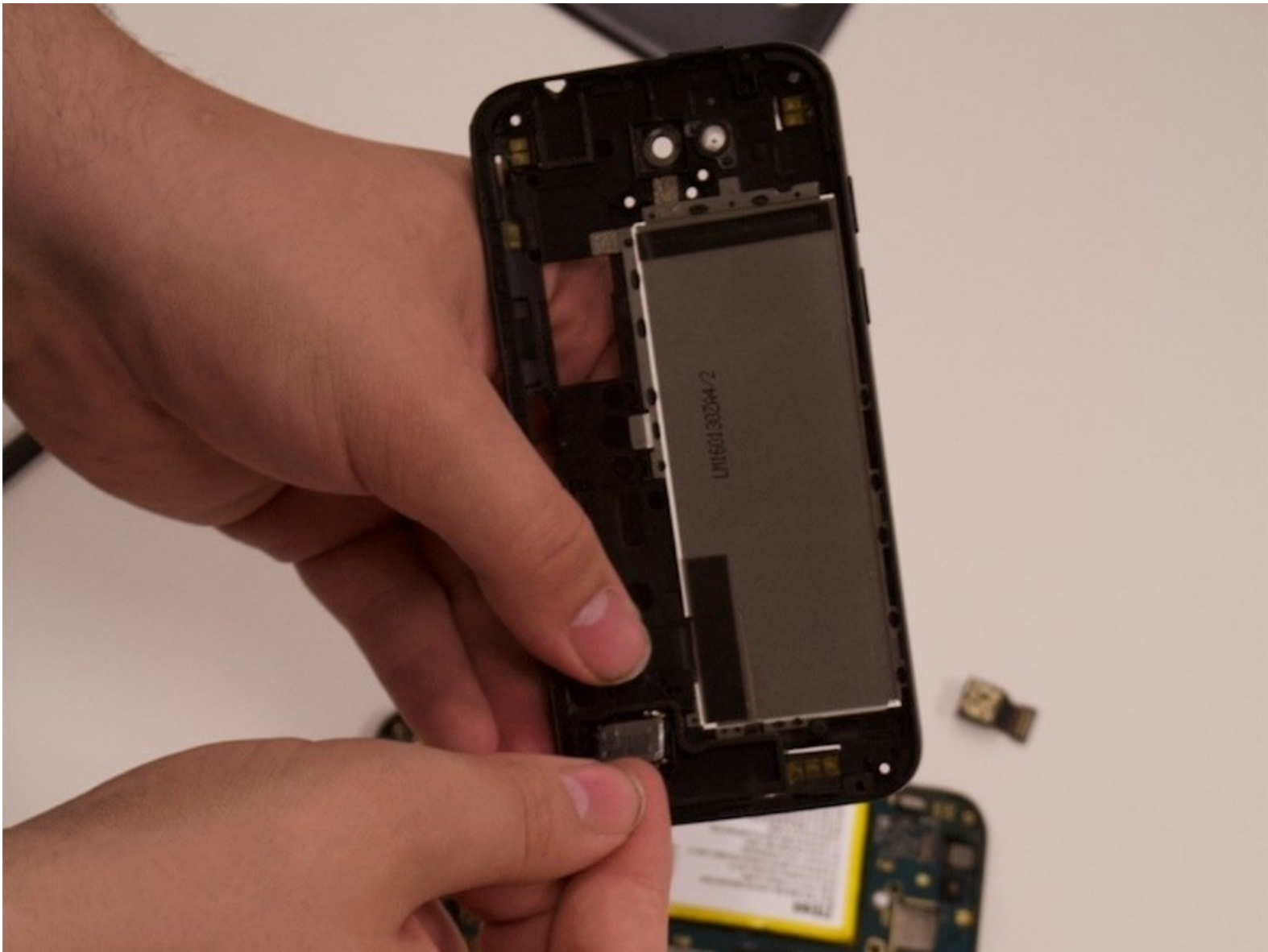




# ZTE Maven Loud Speaker Replacement

Follow this guide to remove and replace the loudspeaker for the ZTE Maven.

Written By: Karli Kennedy



## INTRODUCTION

If your ZTE Maven isn't producing audio—distorted, intermittent, or no sound—throughout the device, the loudspeaker will likely need to be replaced. Follow this guide to replace the loudspeaker in a safe and efficient manner.

The loudspeaker is a small sound driver used to transmit audio to the speakers, earpiece, and external devices, such as headphones. A faulty or blown loudspeaker will transmit distorted audio or no audio at all.

Before using this guide, check the headphone port and earpiece speaker for any debris that may be interfering with the sound quality. Typically, a small accumulation of dust can be removed using a small dust blower. If the audio is only distorted through the headphones, be sure to also test various sets of headphones or auxiliary cords with your device to confirm that the faulty part is the ZTE Maven loudspeaker.

Step 2 requires you to remove eight 2mm OEM screws from the device to get to the loudspeaker on the back of the second covering. Be sure to turn off the phone and disconnect from any external power sources before removing or replacing any parts of the phone.



### TOOLS:

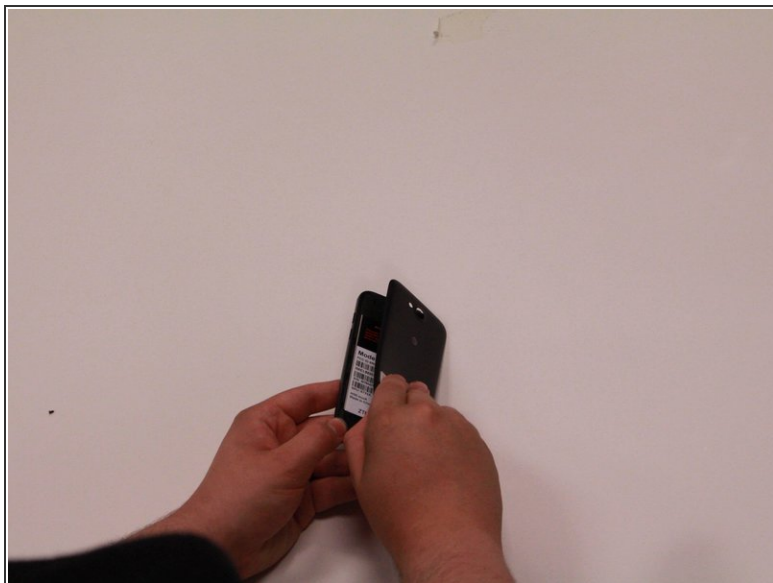
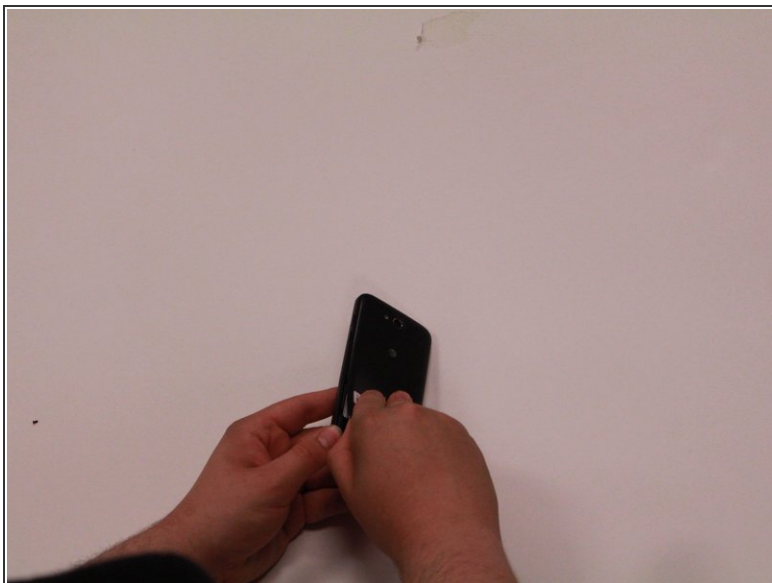
- [Phillips #00 Screwdriver](#) (1)
- [Tweezers](#) (1)
- [iFixit Opening Tool](#) (1)
- [Spudger](#) (1)



### PARTS:

- [ZTE Maven \(z812\) Loudspeaker](#) (1)

## Step 1 — Back Cover



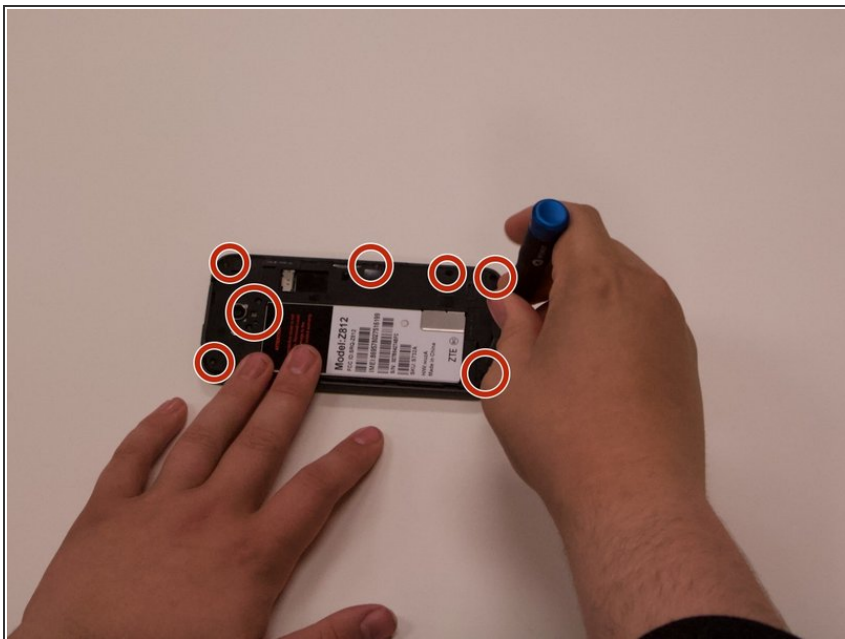
- Use your fingers to remove the back cover.

## Step 2 — SIM Card



- Remove the SIM card from the right side of the device using a pair of tweezers.

## Step 3 — Midframe



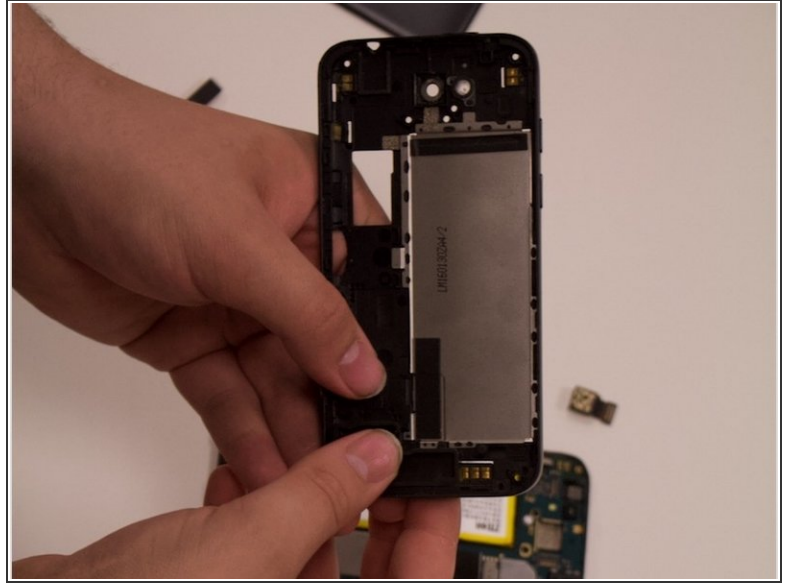
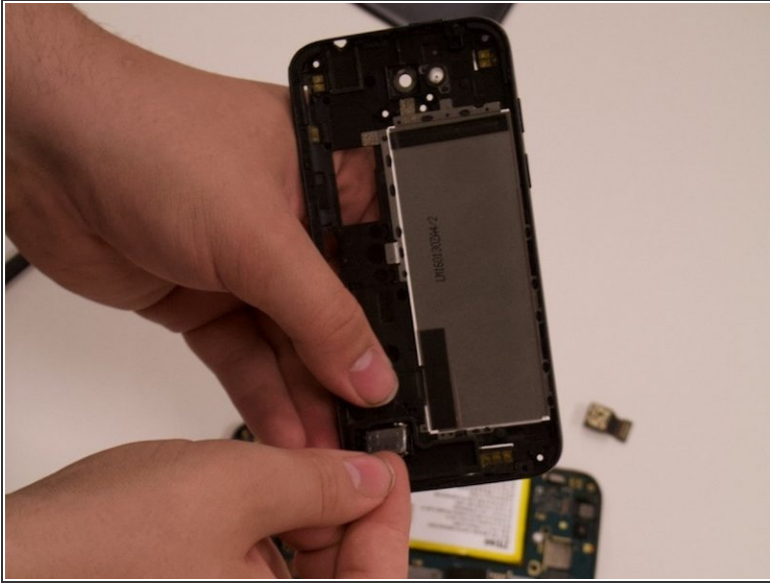
- Remove the seven 2mm Phillips #00 screws from the midframe of the device.

## Step 4



- Use an opening tool or fingers to separate the midframe covering the rest of the device starting at the top corner.

## Step 5 — Loud Speaker



- Remove the loudspeaker from the cover using either your fingers or a spudger.

To reassemble your device, follow these instructions in reverse order.