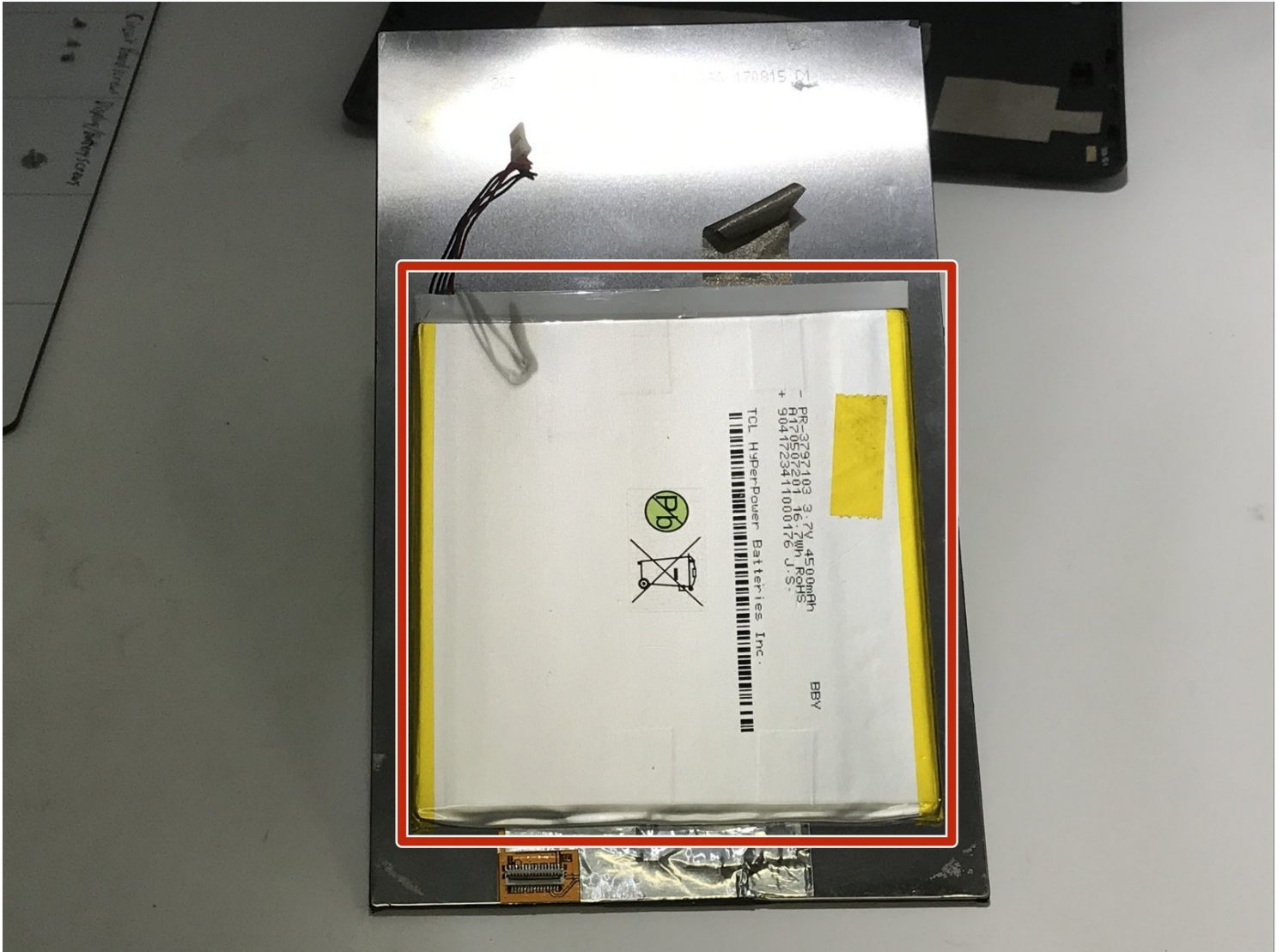




Digiland DL8006 Battery Replacement

This guide provides detailed steps for...

Written By: Landon Choi



INTRODUCTION

This guide provides detailed steps for replacing the internal battery of the DigiLand DL8006. Required items are listed in the "What You Need" section, followed by step-by-step instructions for replacing the battery as you scroll down.

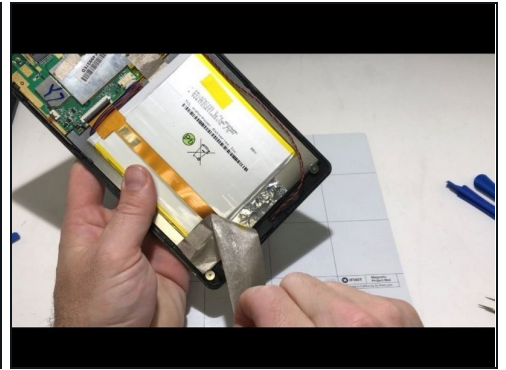
TOOLS:

[iFixit Opening Tool](#) (1)
[Tweezers](#) (1)
[Phillips #0 Screwdriver](#) (1)

PARTS:

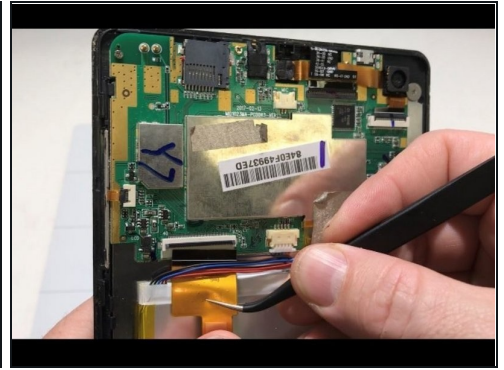
[Digiland DL8006 Battery](#) (1)

Step 1 — Battery



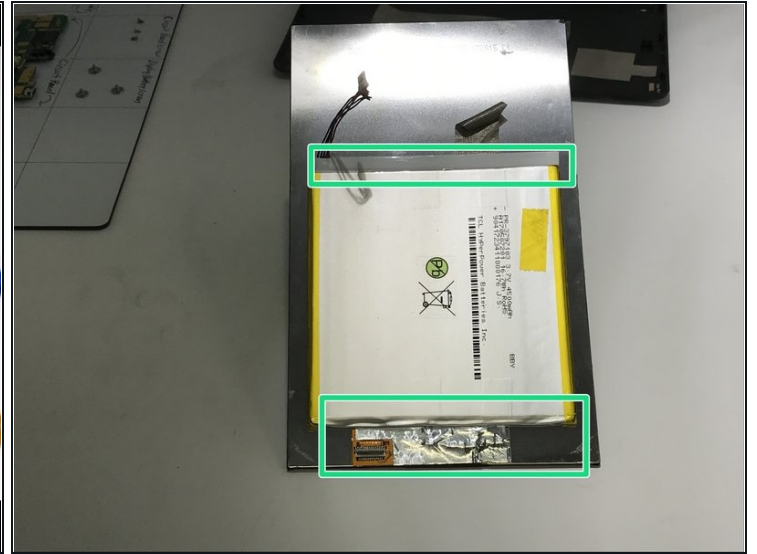
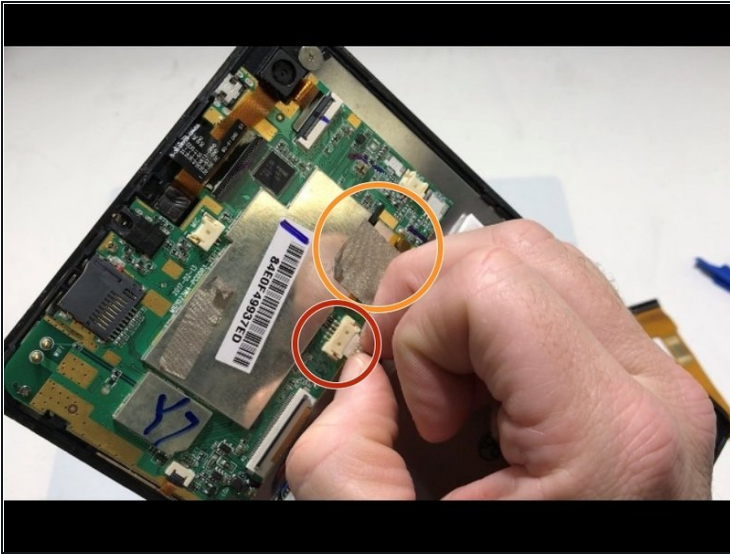
- Place the device down on its front with the back facing upward.
- Split the two faces of the device with a plastic opening tool to pry the back cover off.
- Remove the silver/metallic tape covering the bottom end of the tablet.

Step 2



- Remove the red & black wire that connects the motherboard to the bottom end of the tablet.
- Remove the ribbon cable over the battery by flipping up the plastic tab on the ZIF connector on either side of the cable and pulling it out.

Step 3



- Remove the red & blue cord connecting the battery to the motherboard.
 - Remove the tape connecting the motherboard to the back of the LED screen.
 - Pry open with a plastic opening tool along the top and bottom edges until the battery is free from the device.
 - Remove all the remaining tape from the battery.
- ① It may be helpful to [remove the motherboard](#) prior to prying the battery out for better leverage on the edges.

To reassemble your device, follow these instructions in reverse order.