



Xiaomi Mi 2 Screen Replacement Replacement

Follow this guide to replace your Xiaomi Mi A2 screen.

Written By: koppie007



INTRODUCTION

Hi all,

Follow this guide to replace your screen for the **Xiaomi Mi A2**.

Note: It's possible that you'll need to transfer the backplate from the screen to the new screen. For some screens you need to transfer the bracket, backplate and small parts too. This guide **only** shows how to replace the full screen with all the small parts on it.

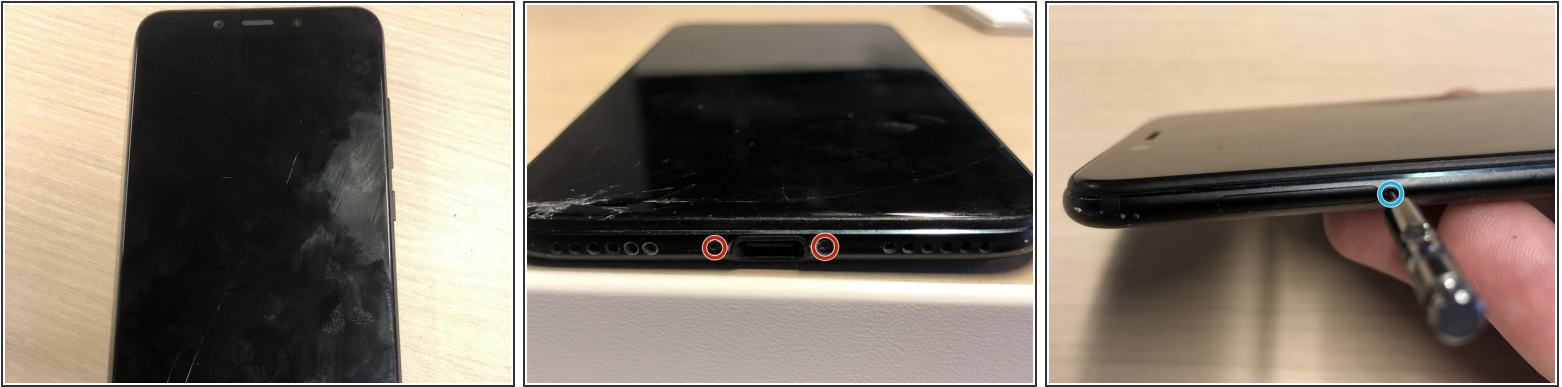
New adhesive is required to attach the bracket/earpiece/earpiece dust filter again if needed.



TOOLS:

- [iFixit Opening Picks set of 6](#) (1)
 - [Phillips #00 Screwdriver](#) (1)
 - [P2 Pentalobe Screwdriver iPhone](#) (1)
-

Step 1 — Remove screws and sim card



- Remove the 2 Pentalobe screws.
- Remove the sim card(s) from the phone.

Step 2 — Remove adhesive



- Insert the opening pick in the middle of the phone.
 - The 2nd image shows you where to put the opening pick in. You'll see that the screen will get loosen. There is lightly adhesive holding the screen.
 - Now take another opening pick and slide it around the whole screen.
- ⚠ Be careful not to put the opening pick in to far! This could damage the ribbon cable inside! Just slide it carefully around the screen.

Step 3 — Loose the screen

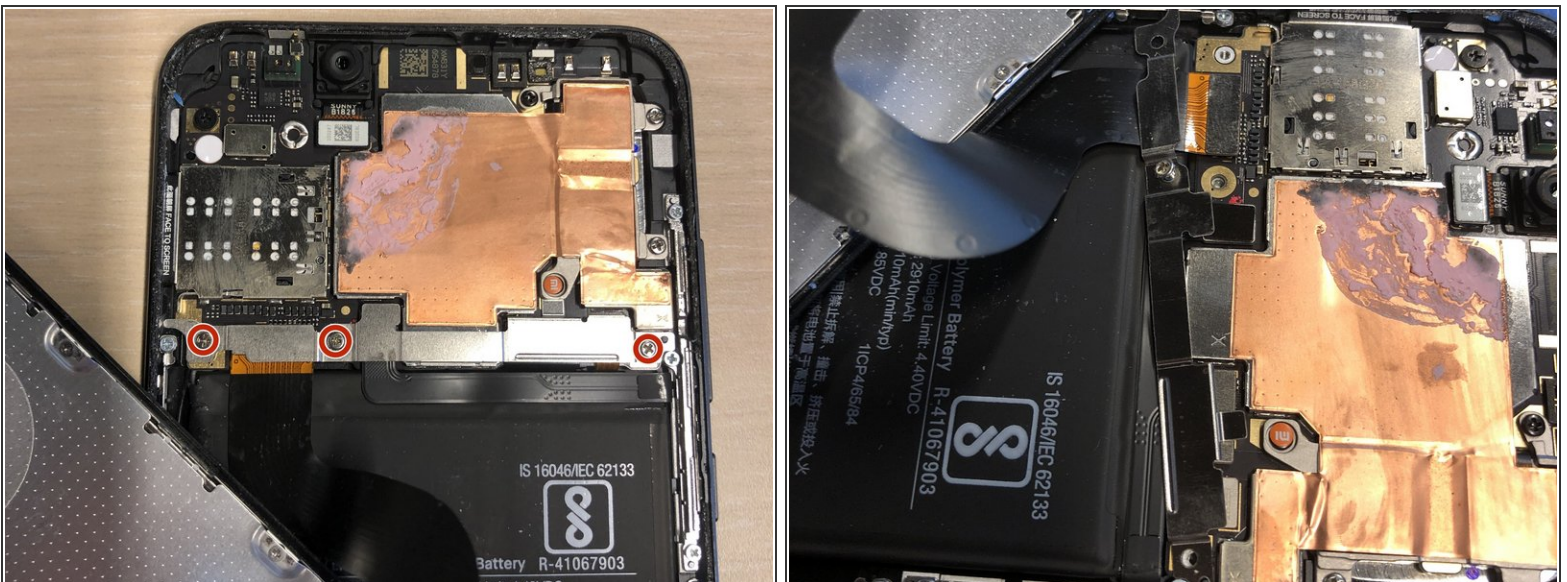


- The screen is now loose from the phone.

⚠ Do not remove the screen yet! It's still attached to the motherboard with the ribbon cable!

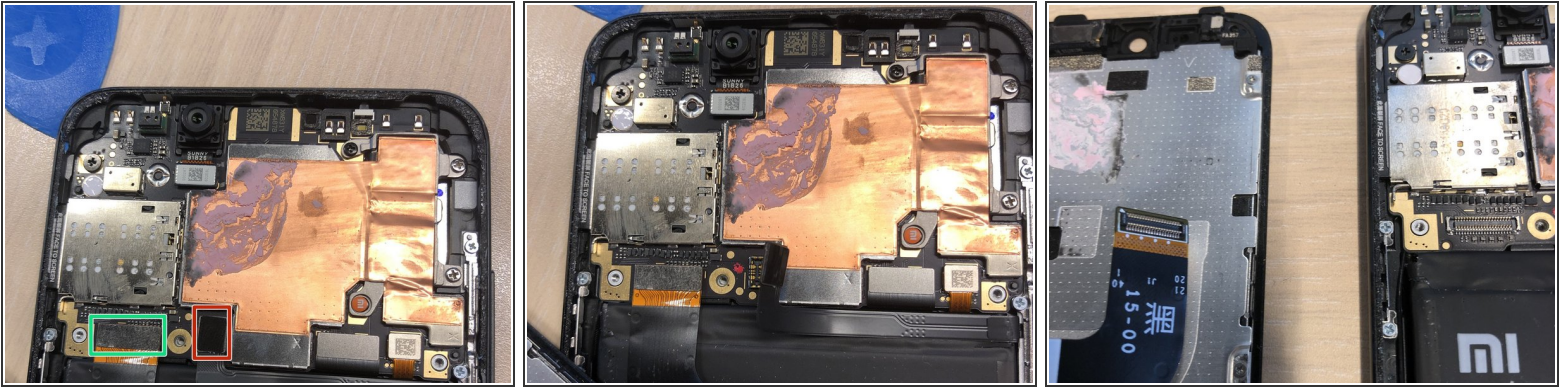
- Just flip the screen carefully. The cable is short so please be careful! The ribbon cable can break easily. You could also hold the screen with your hand to be sure.

Step 4 — Remove battery holder plate



- Remove the 3 PH00 screws from the battery holder plate.
- Now remove the battery holder plate with your tweezers carefully.

Step 5 — Remove the screen



- Now you will see multiple cables attached to the motherboard.
- Remove the battery ribbon cable first. This will prevent the phone from turning on accidentally by pressing the button. Please remove it straight out of it's socket with your finger nail or spudger (circled red).
- Now remove the LCD ribbon cable straight out of it's socket with your finger nail or spudger (circled green).

Step 6 — Screen removed



- You successfully removed the screen now!

To reassemble your device, follow these instructions in reverse order.

Don't forget: It's possible that you need to transfer the backplate and/or bracket and/or small parts! How to transfer those items are **NOT** included in this guide.

Note: New adhesive is required to attach the bracket/earpiece/earpiece dust filter again if needed.