



NETGEAR WGT624 v3 Lower Case Replacement

Follow this guide to remove the lower case for access to the hardware inside.

Written By: Nicole Slagle



INTRODUCTION

Removing the lower case allows you to replace the hardware inside the device.



TOOLS:

- [iFixit Opening Tools](#) (1)
 - [T8 Torx Screwdriver](#) (1)
-

Step 1 — Lower Case



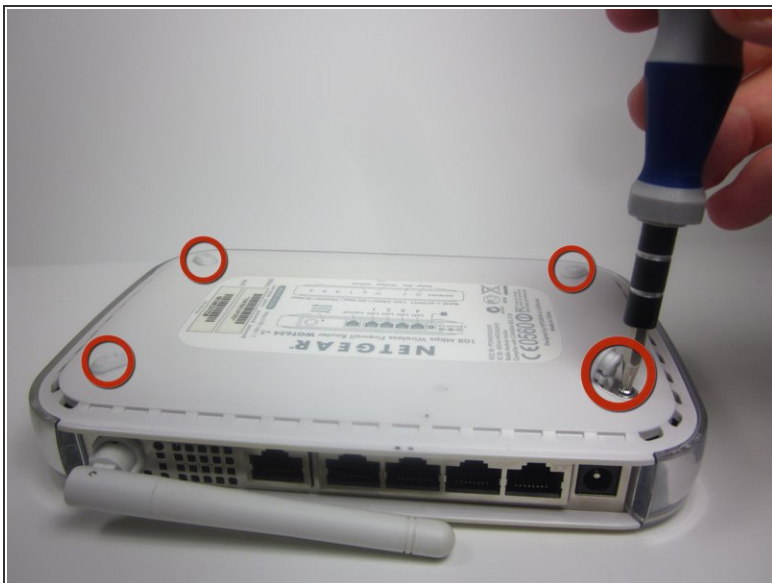
- Turn the device so that the bottom is facing up.

Step 2



- Use the plastic opening tool to carefully lift the rubber stops in each corner.
- ⓘ Do not completely remove the rubber stops, because they are difficult to replace.

Step 3



- Unscrew the 4 11.8 mm T-8 Torx screws from each corner of the device.

Step 4



- Lift the lower case straight up from the rest of the router.

To reassemble your device, follow these instructions in reverse order.