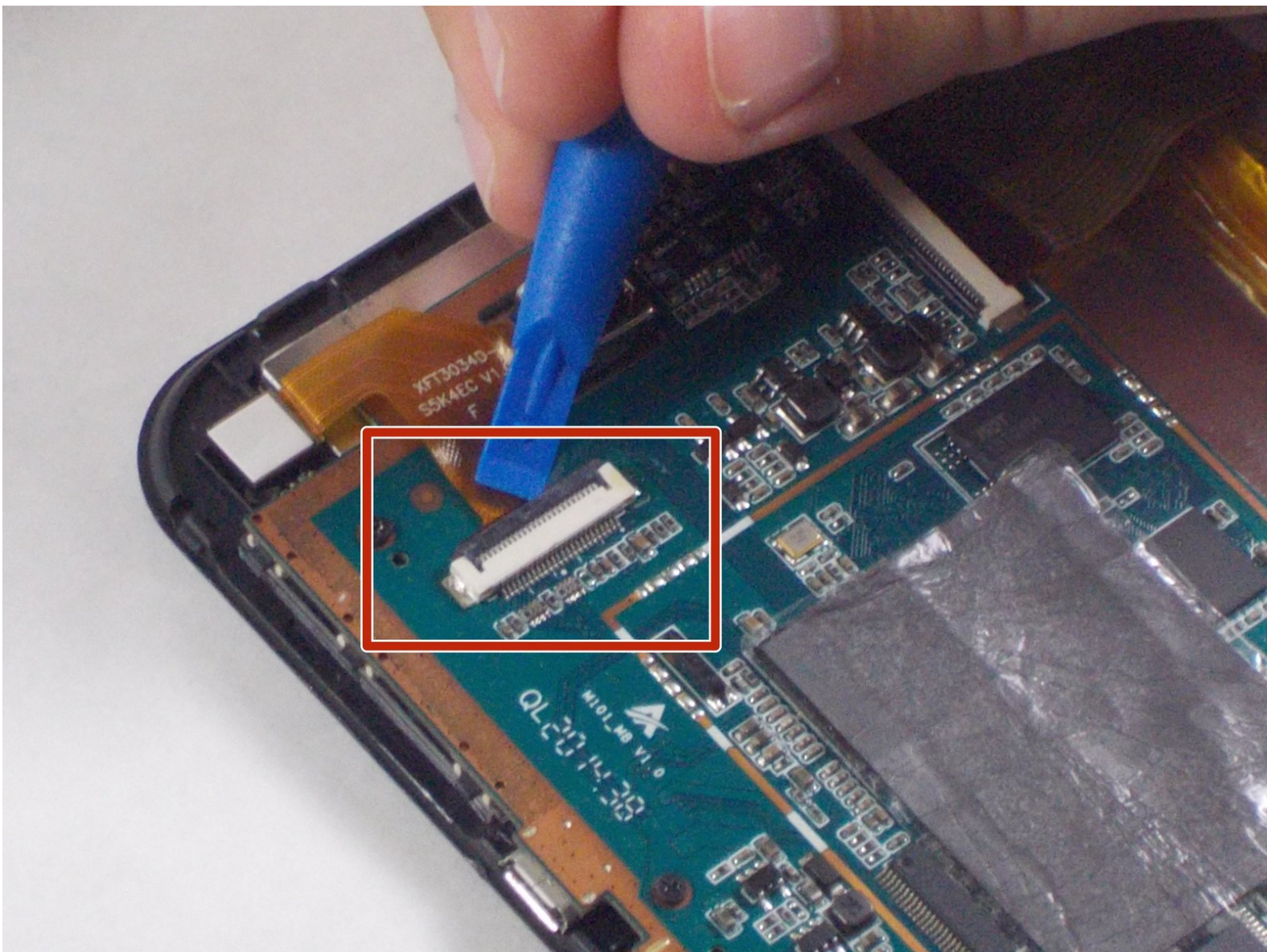




Infinity v2 10.1 Camera Replacement

In this replacement guide, we will be showing you how to replace the broken camera in the Infinity v2 10.1.

Written By: sammytarbokas



INTRODUCTION

The Infinity v2 10.1 camera should be replaced when it no longer turns on, the lens is cracked or water damaged, or when it takes a distorted image. Replacing the camera is a simple process, without any previous repair experience required. You will simply disconnect the camera from the motherboard, which you can do using your fingers. All you will need is a tool to open the device and a new camera to replace with the old one.



TOOLS:

- [iFixit Opening Tools](#) (1)
-

Step 1 — Back Case



- Slightly pry open one corner of the device by using your finger nail to separate the screen from the back case.
- Use an opening tool to carefully detach the back case from the tablet. Start by inserting the tool where your fingernail opened a gap, and work around all four sides of the device.
- ⓘ There will be a slight click noise as you free each tab.
- Once the case is completely free, carefully lift it and place it face up on the workstation, being cautious not to damage the speaker wires connecting the two halves.

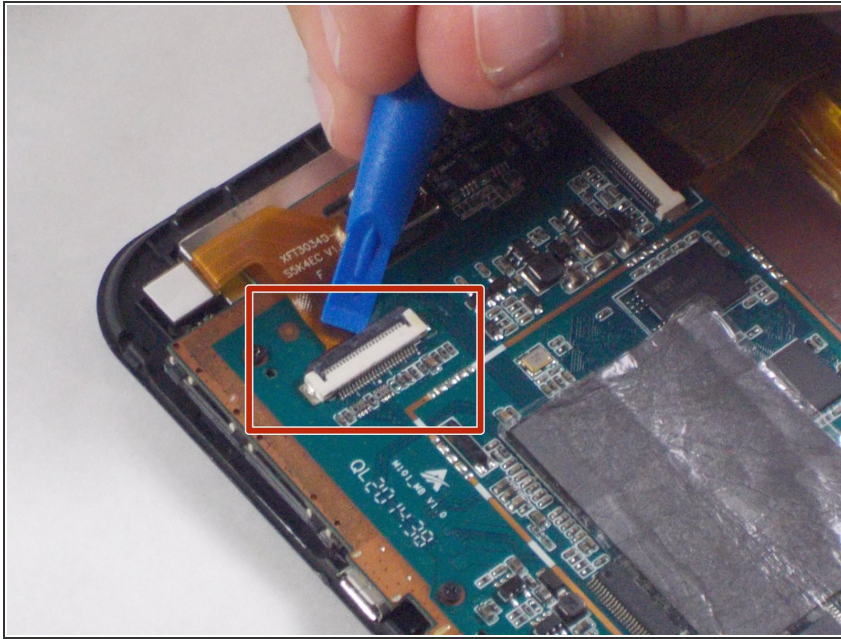
Step 2



- Remove the speakers from the case by gently lifting them up and out of their slots.

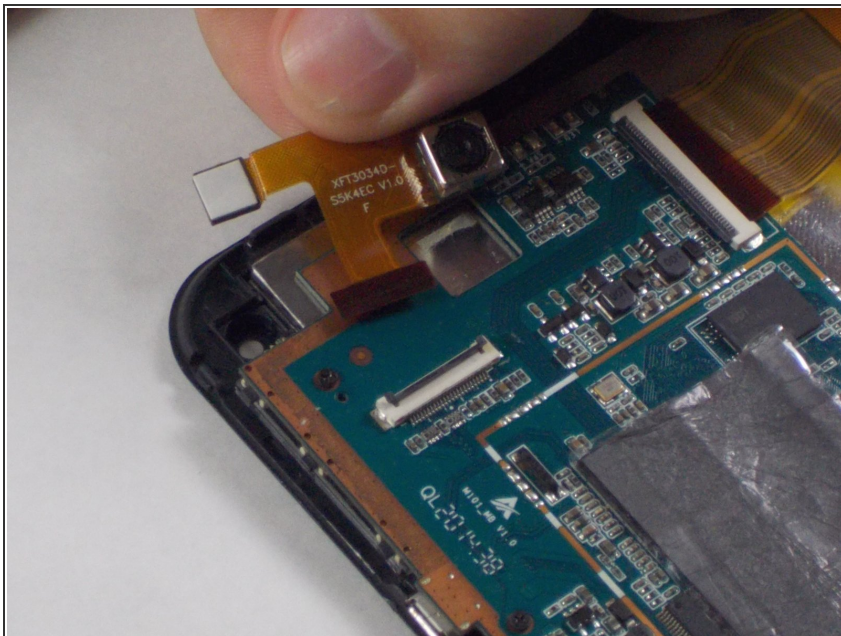
This document was generated on 2020-11-28 12:01:02 AM (MST).

Step 3 — Camera



- Use your thumb or opening tool to lift the black connector holding in the ribbon cable.

Step 4



- Remove the camera by gently picking it up and pulling it free from the connector.
- ⚠ Avoid touching the lens of either camera.

To reassemble your device, follow these instructions in reverse order.