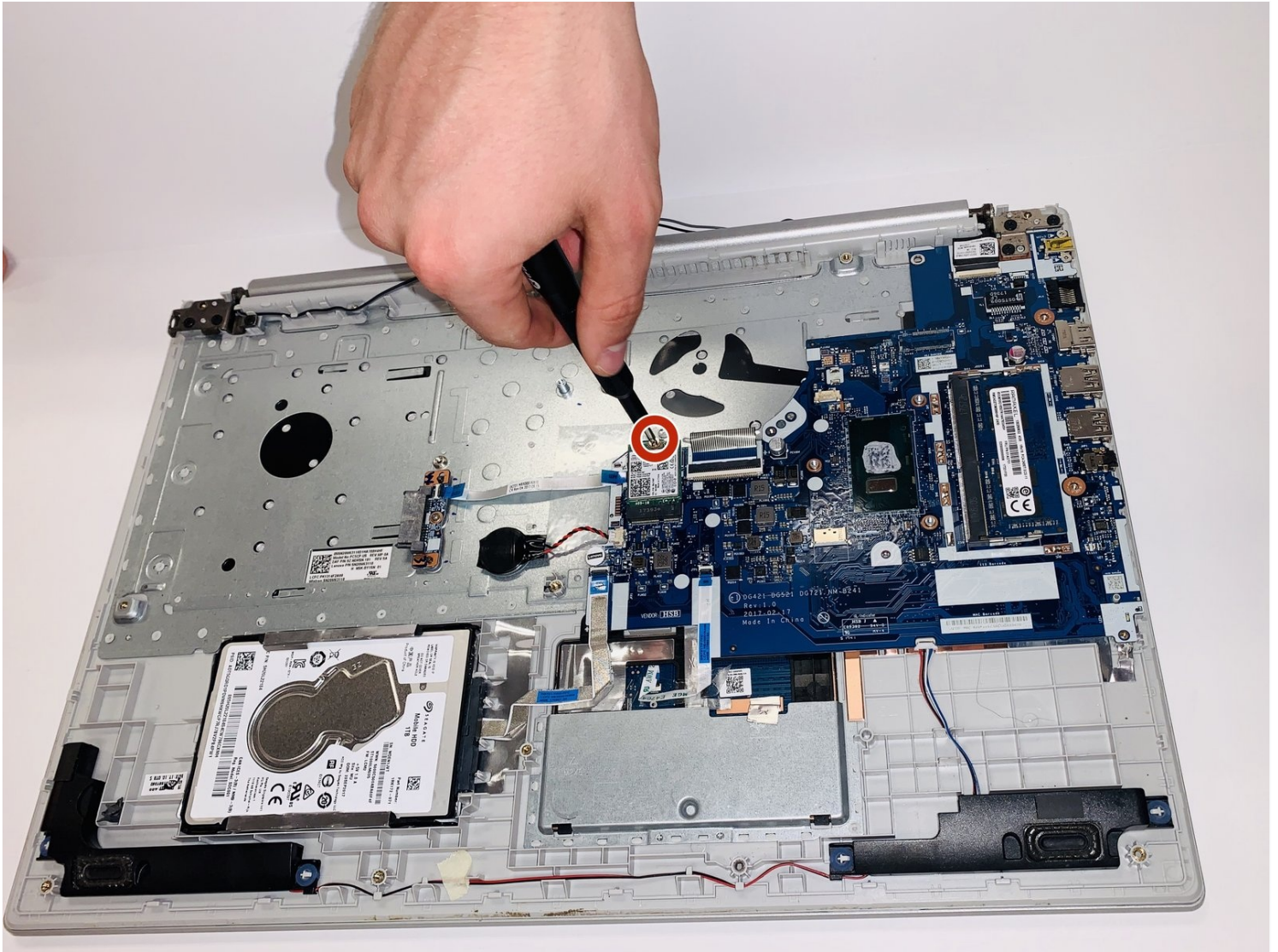




Lenovo Ideapad 320-17IKB Wi-Fi Card Replacement

Written By: Kristen Gismondi




TOOLS:

Phillips #00 Screwdriver (1)

iFixit Opening Tool (1)

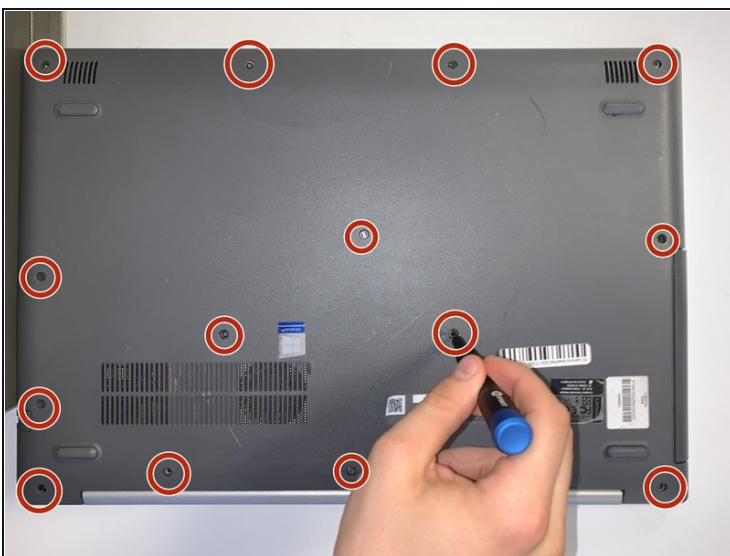
Step 1 — Back Panel



 Turn off and unplug the computer.

- Flip the laptop over so that the back panel is facing upwards.

Step 2



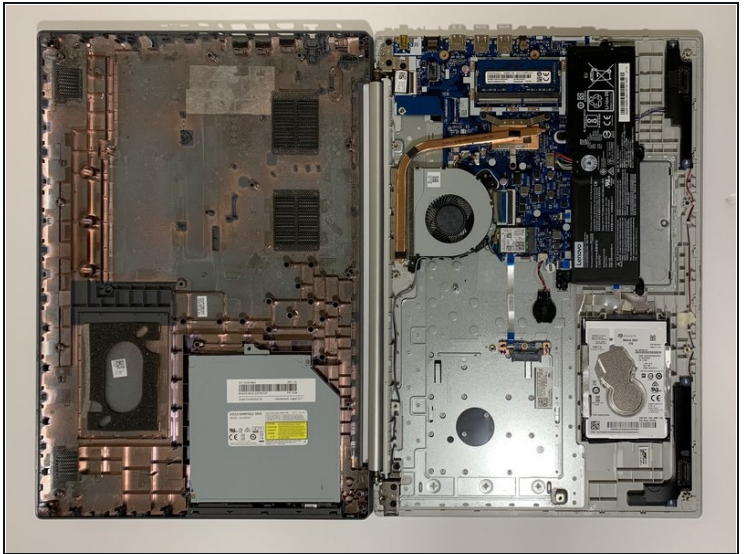
- Remove fourteen 7mm Phillips #00 screws from the back panel.

Step 3



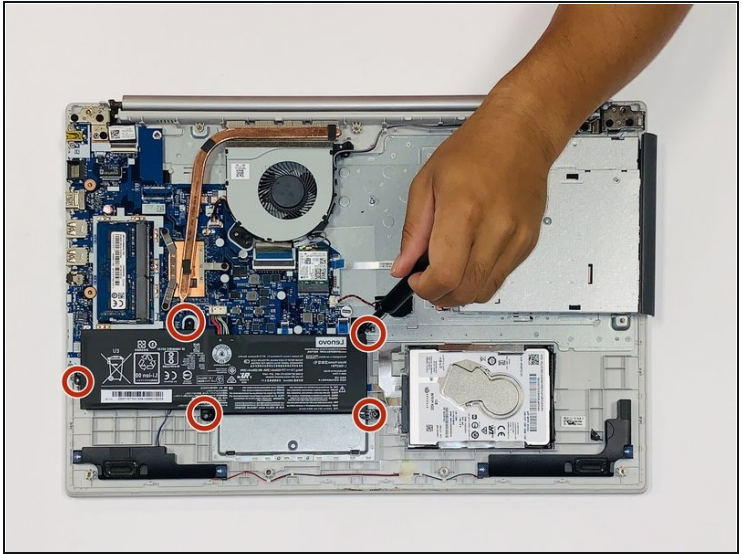
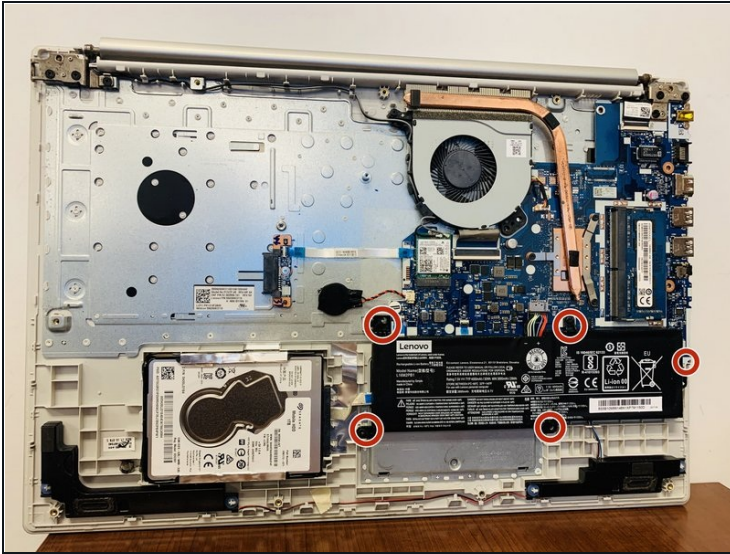
- Carefully remove the optical drive by pulling the bezel away from the laptop.

Step 4



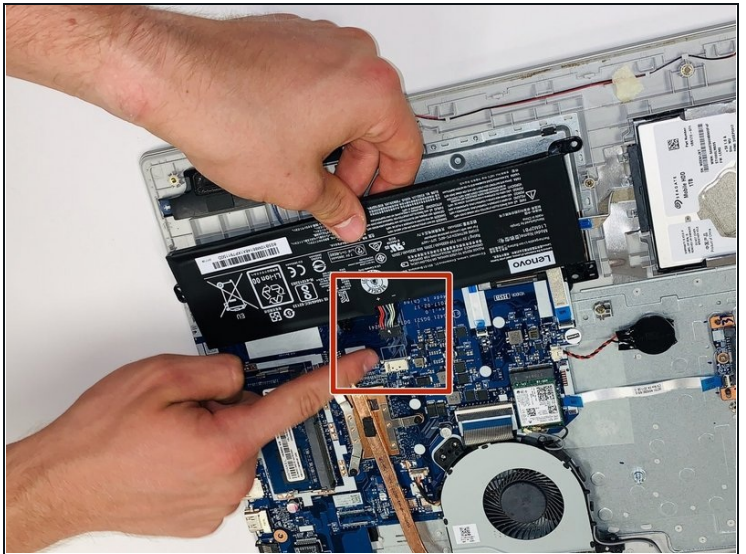
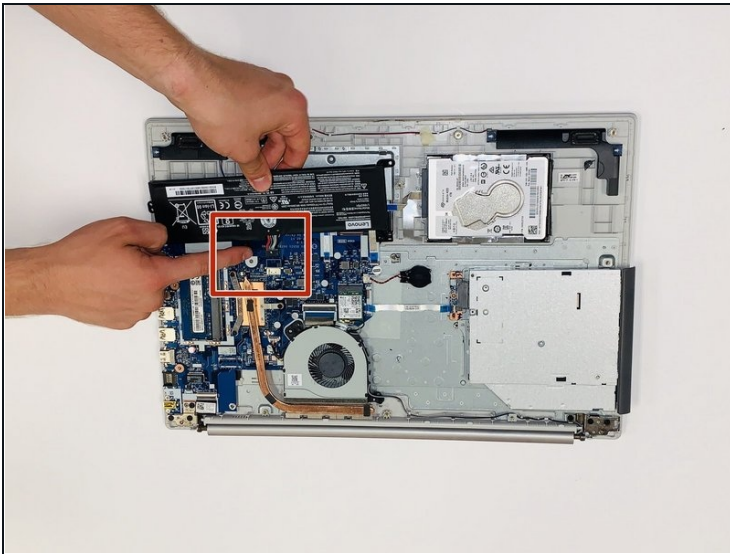
- Use your fingers or an opening tool to gently remove the back panel from the bottom of the laptop.
- Lay both sides of the laptop next to each other.

Step 5 — Battery



- Remove five 7mm Phillips #0 screws from the battery holder.

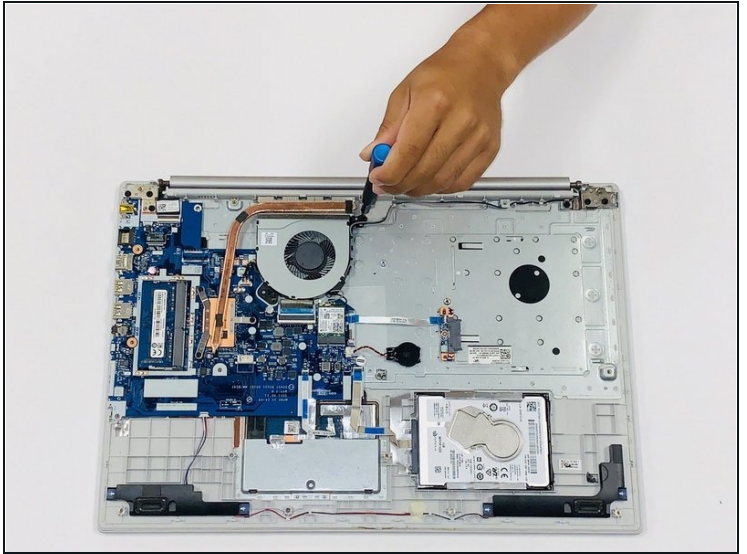
Step 6



- Pinch the connecting cord with one hand and pry the battery connector with the other hand, while gently pulling the connector straight out and towards the bottom edge of the base.

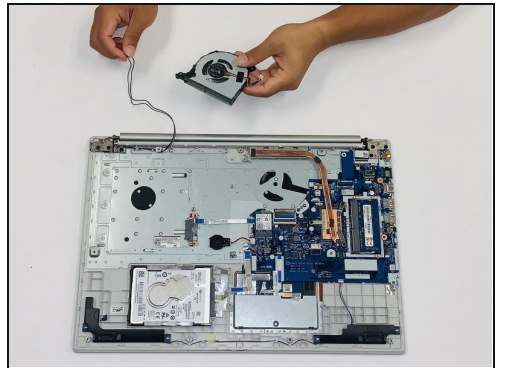
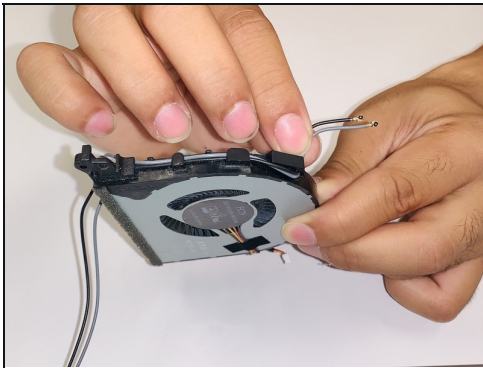
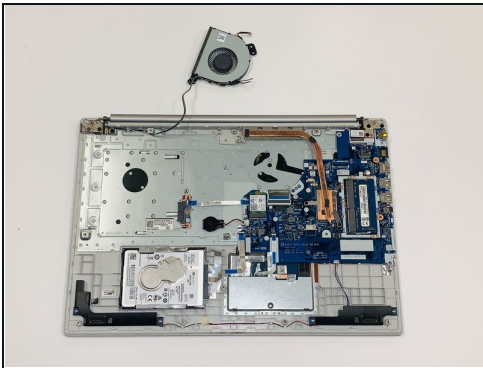
⚠ When removing the battery, use care to keep it flat and do not open the battery because it can result in fire or explosion.

Step 7 — Fan



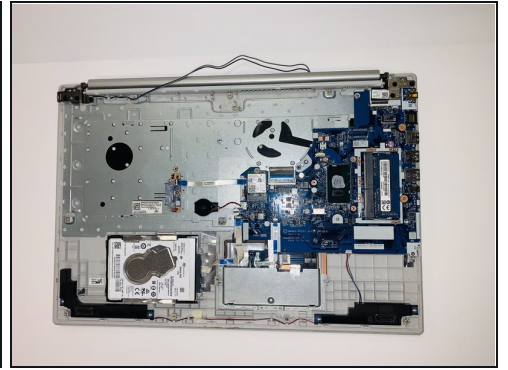
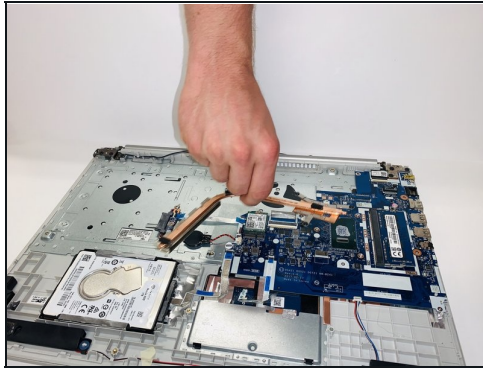
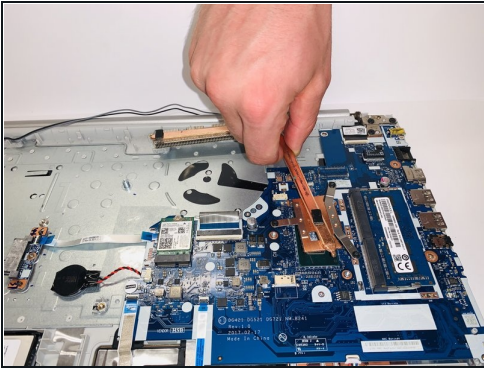
- Remove five 7mm Phillips #00 screws from the cooling fan.

Step 8



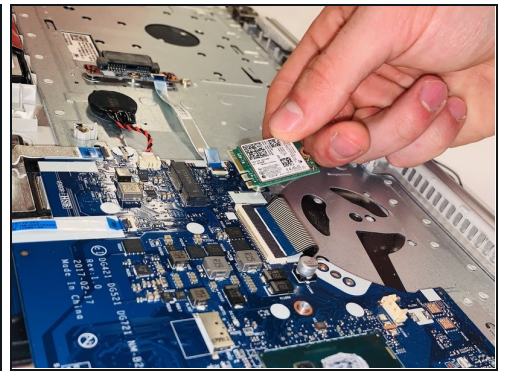
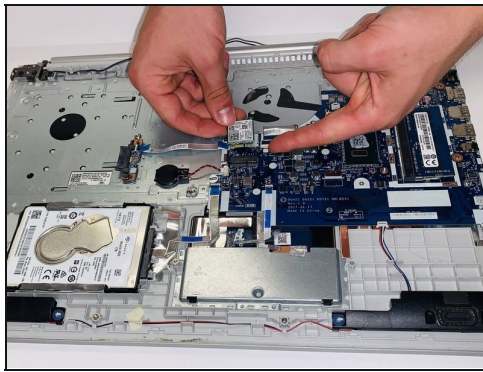
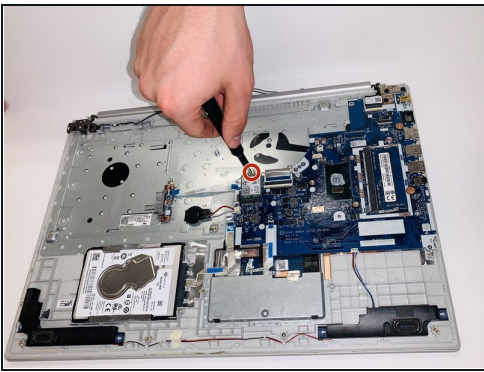
- Gently lift the fan assembly out of the laptop.
- Gently remove the connecting wires from the exterior of the fan by slowly "weaving" the cord between the ridges of the fan.

Step 9 — Heat Sink



- Gently lift and remove the heat sink and set it aside.

Step 10 — Wi-Fi Card



- Remove the single 3mm Phillips #0 screw from the Wi-Fi card.
- Pull the Wi-Fi card straight out of the laptop.

To reassemble your device, follow these instructions in reverse order.