



# ZTE Maven Midframe Replacement

How to replace a ZTE Maven midframe.

Written By: Kristen Gismondi

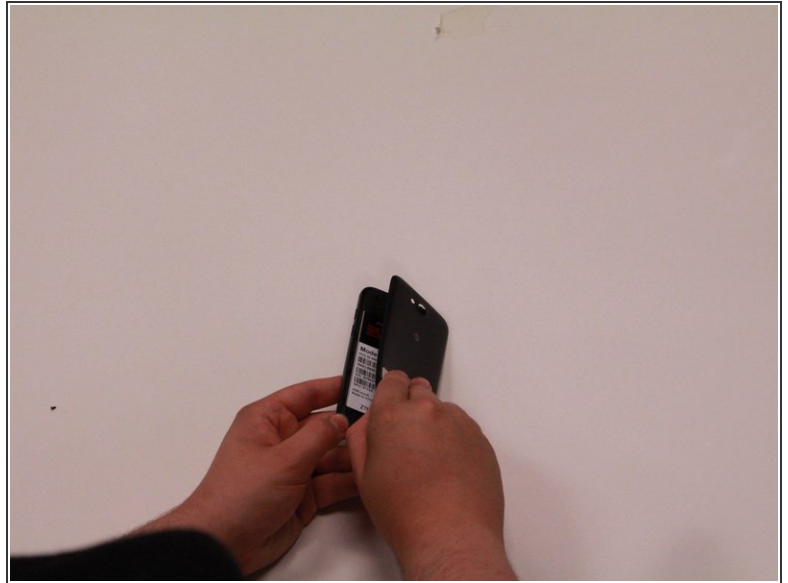
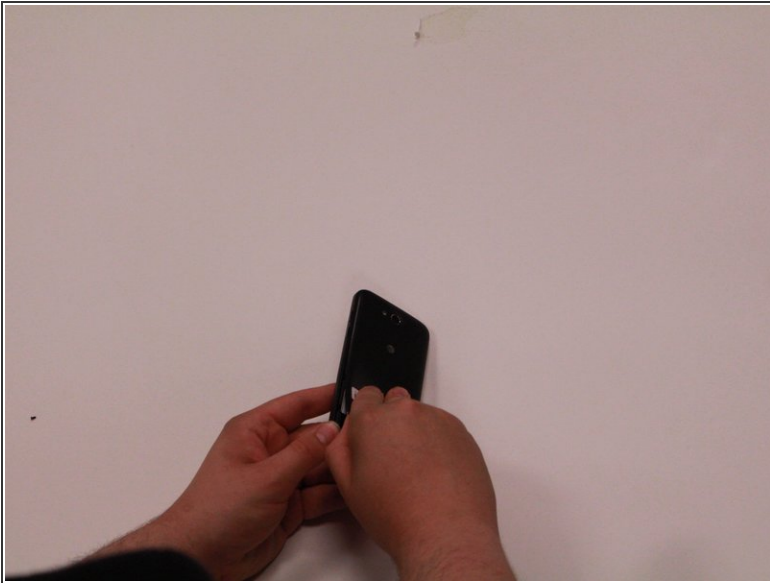




## TOOLS:

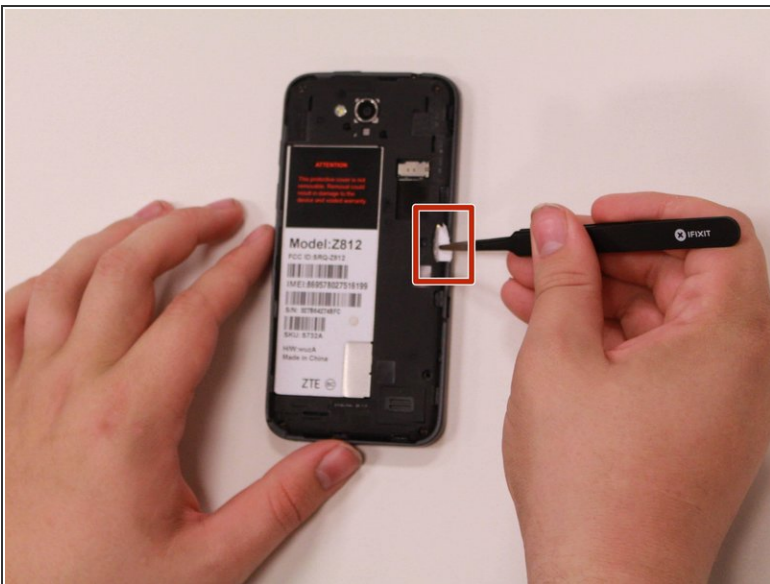
- [Tweezers](#) (1)
  - [Phillips #00 Screwdriver](#) (1)
-

## Step 1 — Back Cover



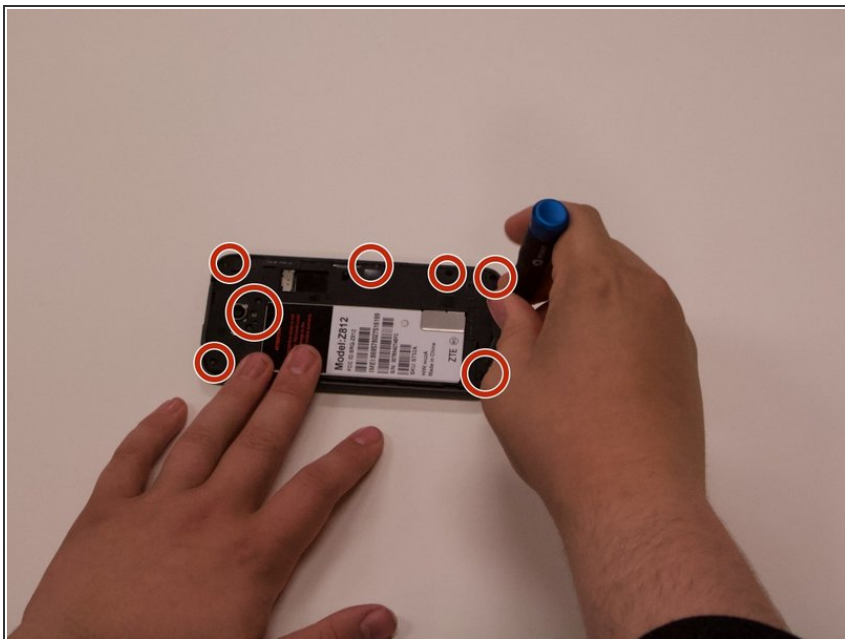
- Use your fingers to remove the back cover.

## Step 2 — SIM Card



- Remove the SIM card from the right side of the device using a pair of tweezers.

## Step 3 — Midframe



- Remove the seven 2mm Phillips #00 screws from the midframe of the device.

## Step 4



- Use an opening tool or fingers to separate the midframe covering the rest of the device starting at the top corner.

To reassemble your device, follow these instructions in reverse order.