



How to Clean the InFocus X2 Lamp Housing Screens

Over time, dust can build up inside the InFocus X2's Lamp Housing. This guide will instruct you on how to remove the Lamp Housing and clean its screens.

Written By: Paul Duarte





TOOLS:

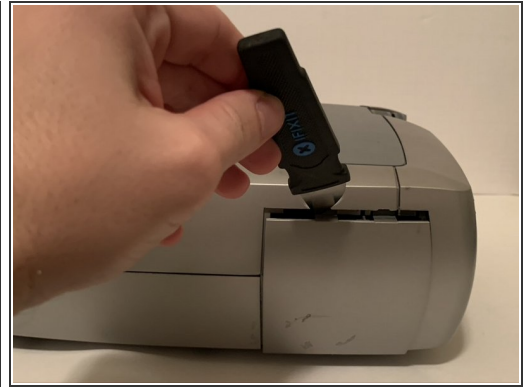
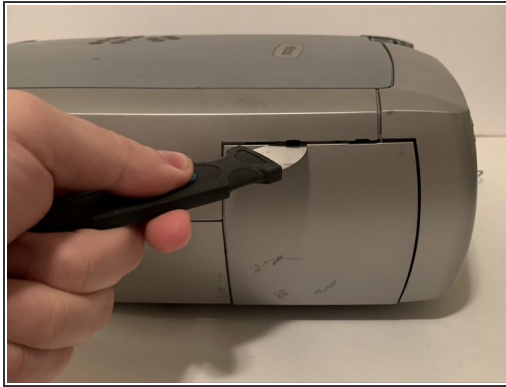
- [Jimmy](#) (1)
- [4.0 mm Flathead Screwdriver](#) (1)



PARTS:

- [Vacuum Cleaner](#) (1)

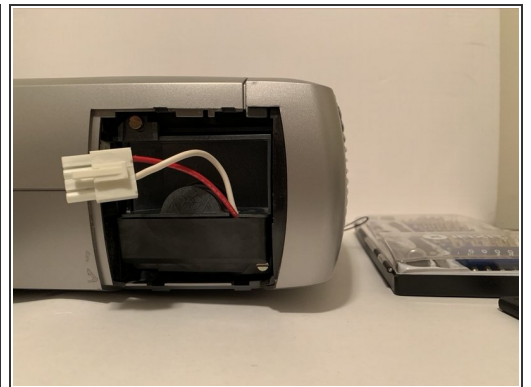
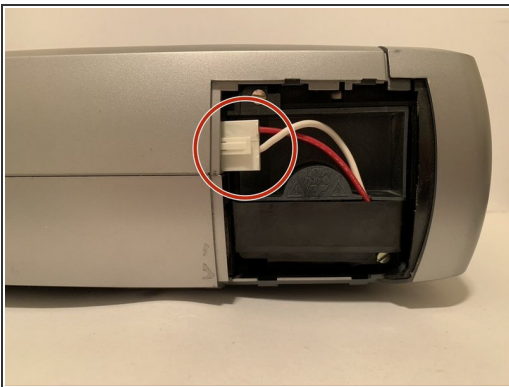
Step 1 — Open the Lamp Door



 Be sure that the projector is turned off, unplugged, and has cooled for at least 30 seconds.

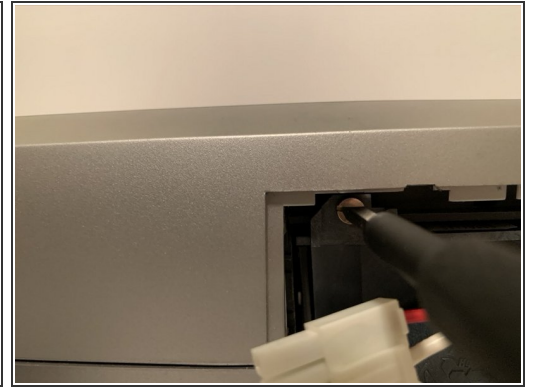
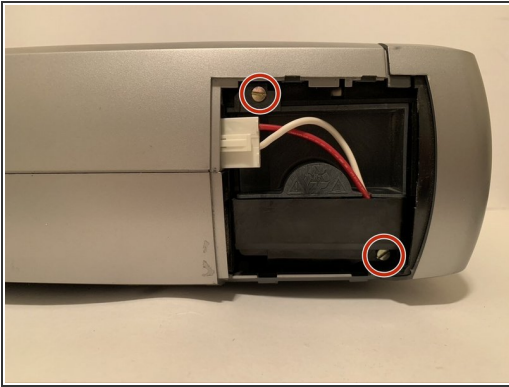
- Insert the Jimmy into one of the two notches on the lamp door's top edge.
- Then use light force on the Jimmy to pry the latch away from the door.
- If necessary, insert the Jimmy into the second latch and separate it from the projector.
- Remove the door away from the projector by hand.

Step 2 — Disconnect the Lamp



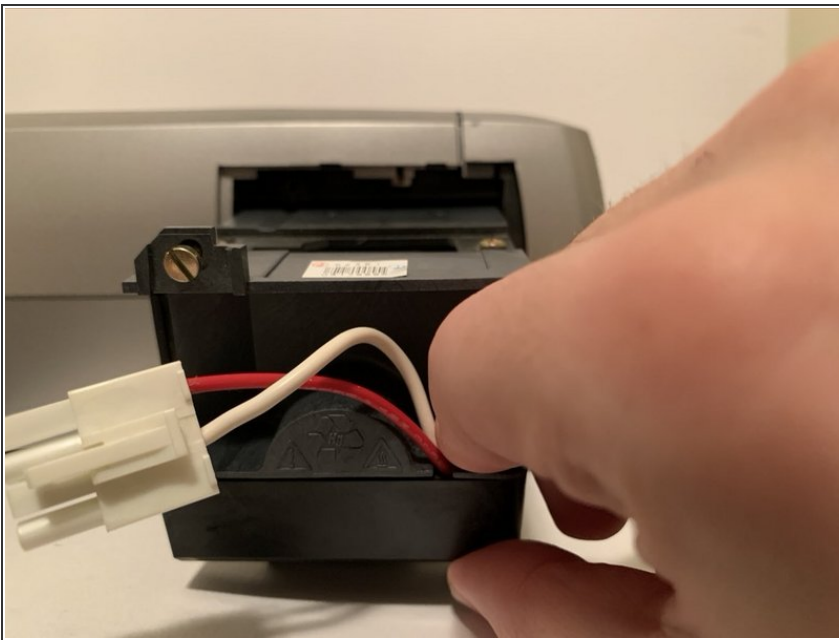
- Gently disconnect the lamp from the projector by using your thumb and forefinger to pinch on the white tab on the plug.
- Then pull the plug away from the projector.

Step 3 — Unscrew the Lamp from the Projector



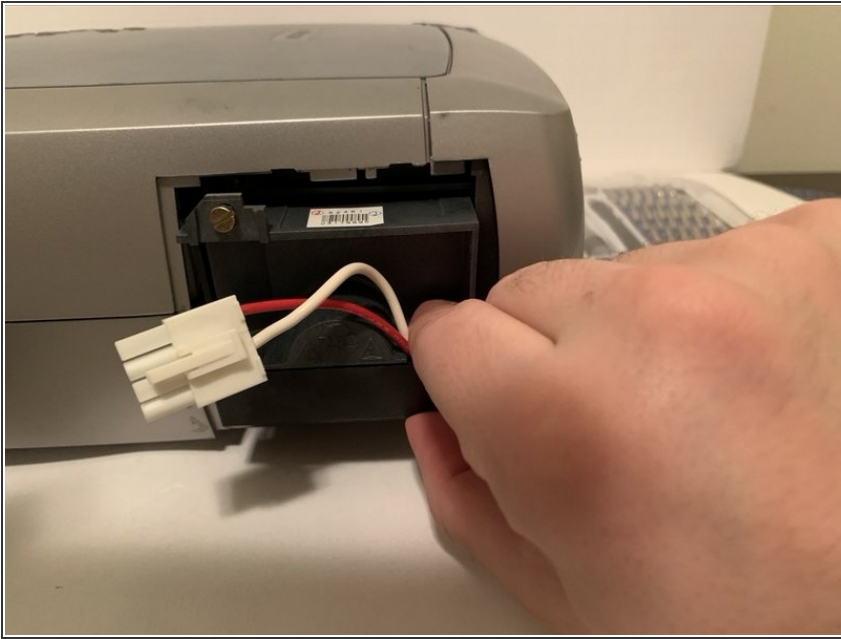
- Use a Phillips #4 screwdriver or driver with the Phillips #4 head to unscrew the two 0.6 mm diameter brass screws from the lamp's housing.
- ⓘ For the lower screw, ensure it remains in the hole in the lamp assembly and it does not fall into the projector. If it falls in the projector, use a magnetized screw bit or a small magnet to pick it up and remove it.

Step 4 — Remove the Old Lamp



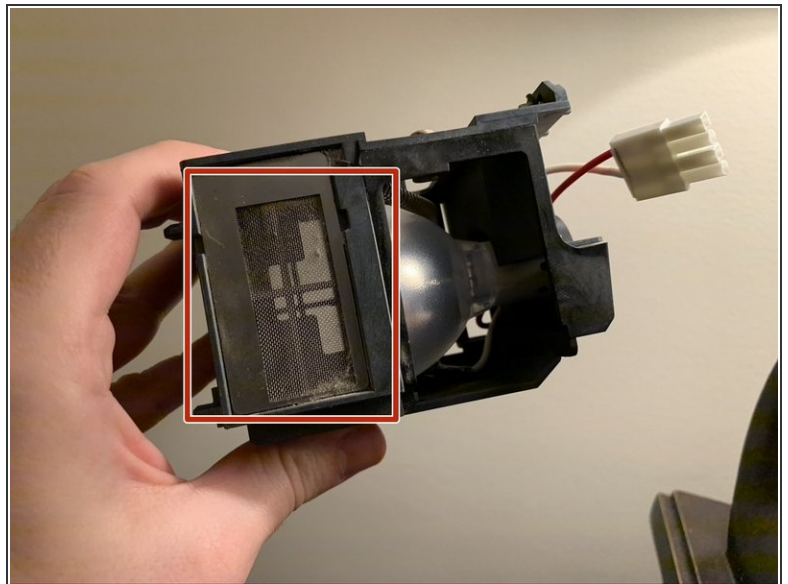
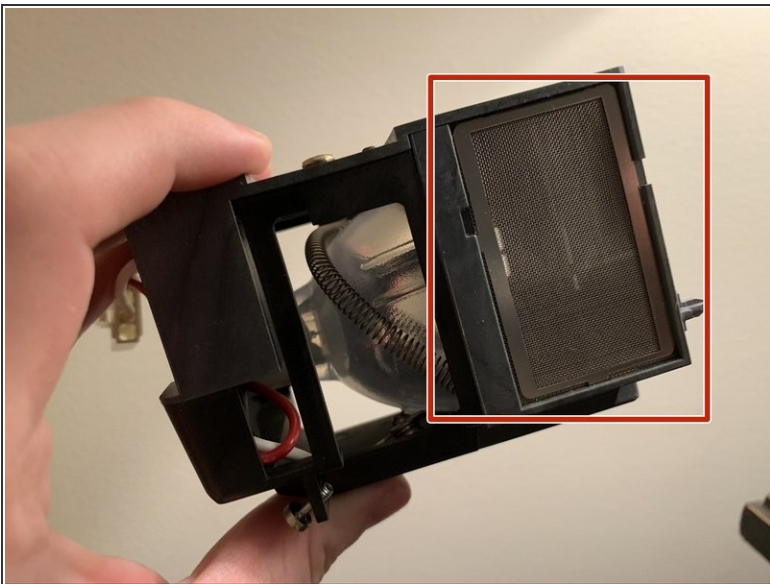
- Pull on the bottom plastic tab and remove the lamp by hand.

Step 5 — Insert the New Lamp



- Insert the replacement lamp into the projector.

Step 6 — Cleaning the Dirty Screens



- Use a vacuum cleaner to gently suck up the dust on the front and the back Lamp Housing screens.

To reassemble your device, follow these instructions in reverse order.