



Asus ROG G751JL-BSI7T28 Keyboard Assembly Replacement

The keyboard for the Asus ROG G751JL-BSI7T28 is an integral part of the laptop. Use this guide if your keyboard is malfunctioning or has stopped working.

Written By: Kristen Gismondi



INTRODUCTION

This guide will demonstrate how to replace the Asus ROG G751JL-BSI7T28 keyboard on your Asus laptop computer.

Symptoms of a broken keyboard include missing or unresponsive keys. Check that any unresponsive keys are clear of dust and debris as this can also lead to a lack of input.

This guide is compatible with the following ASUS models: G751J, G751JL, G751JM, G751JT, and G751JY. Compatible part numbers include: 0KNB0-E601US00 and ASM14C33USJ442.

Warning: Ensure your device is powered down before starting this guide to prevent any electrical injuries or damage to your computer.



TOOLS:

- [Spudger](#) (1)
 - [Phillips #0 Screwdriver](#) (1)
 - [iFixit Opening Tool](#) (1)
-

Step 1 — Back Panel



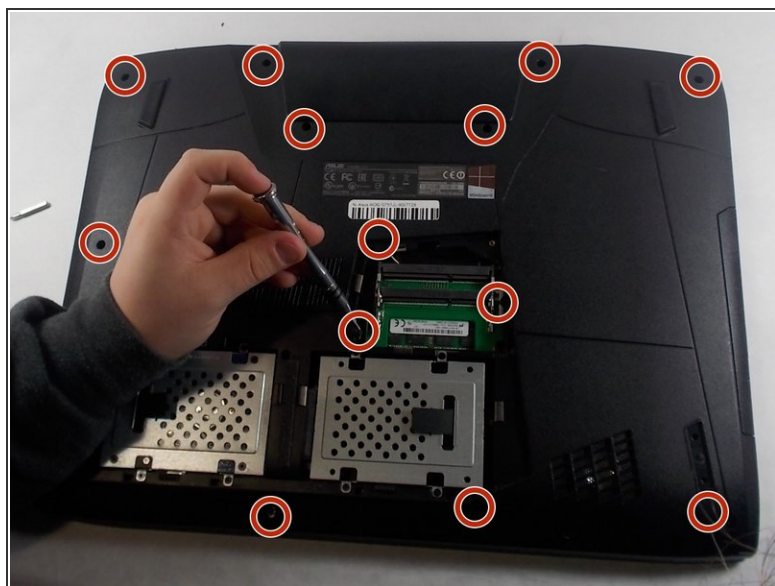
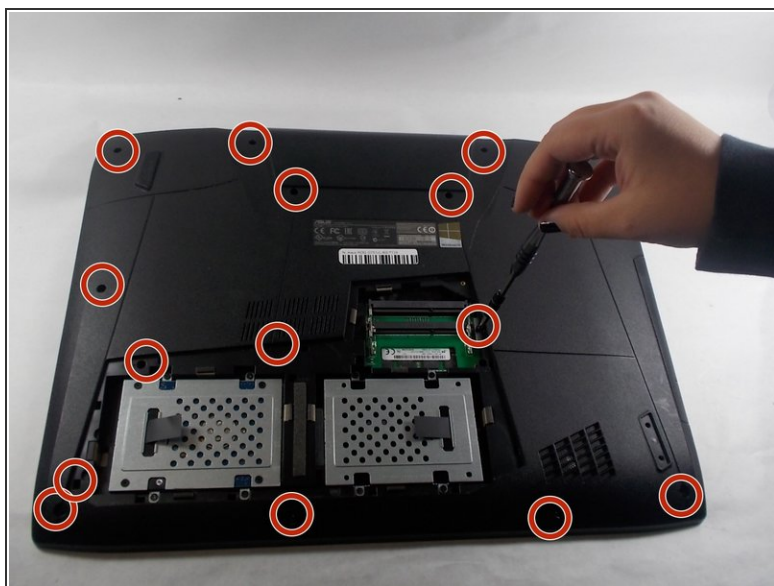
- With the laptop closed, turn it upside-down so the bottom is facing up toward you.

Step 2



- Place a spudger into the notch, and pry the small triangular piece away from the laptop.
- Using a Phillips #00 screwdriver, remove the single 3 mm screw.
- Place a spudger beneath the back panel and pry it away from the laptop.

Step 3 — Display Assembly



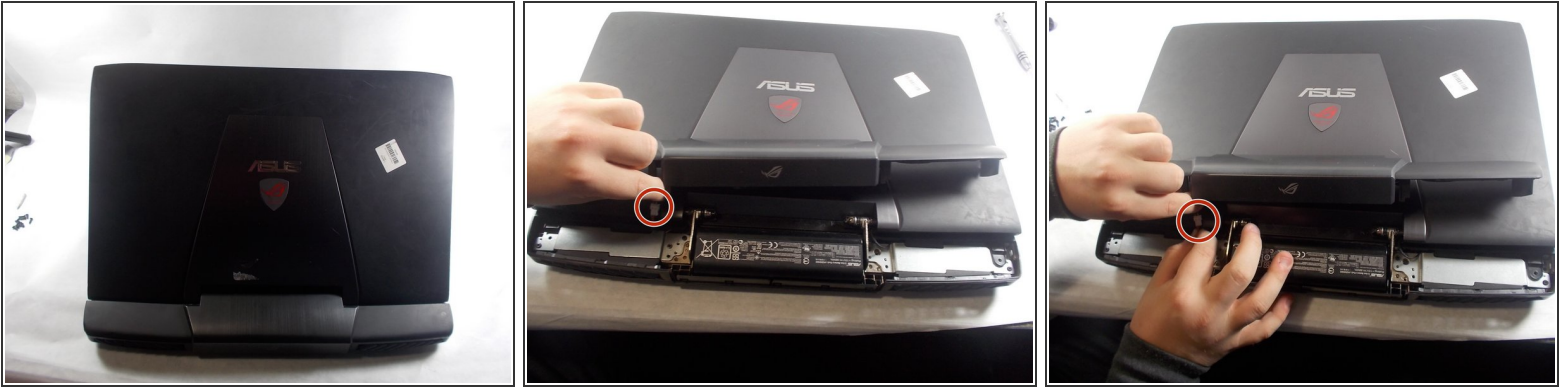
- Remove all 5mm Phillips #00 screws from the back cover.

Step 4



- Use a spudger to pry the disc drive out of the laptop.

Step 5



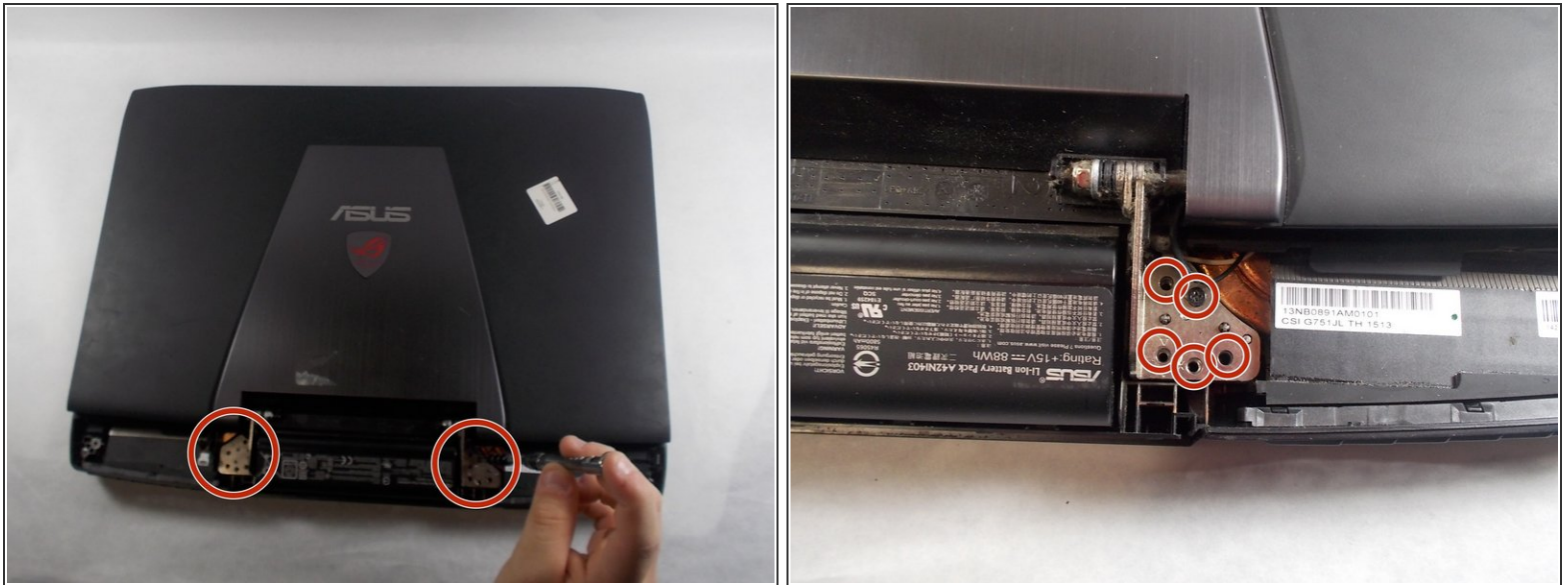
- Open the laptop and turn it so that the ASUS logo is facing you.
- Gently lift up the display hinge housing shroud, but don't pull it completely away yet.
- Disconnect the RGB light power cable in the shroud, now the shroud can be put aside.

Step 6



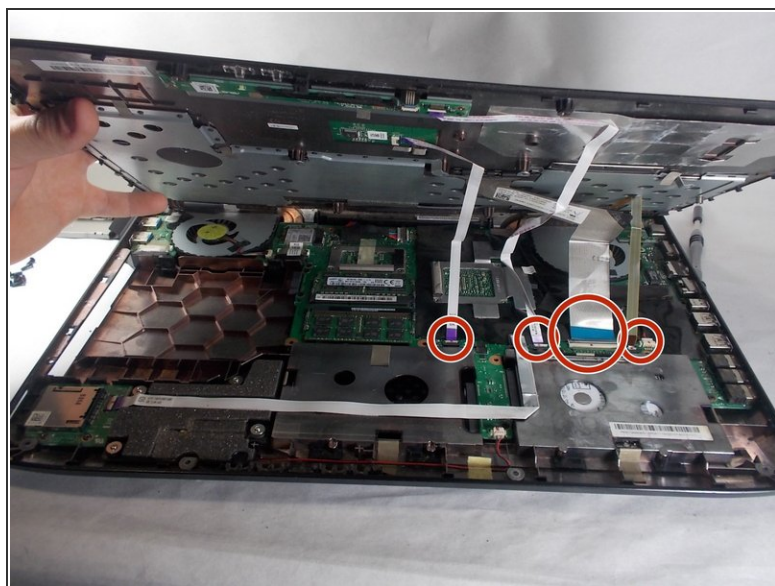
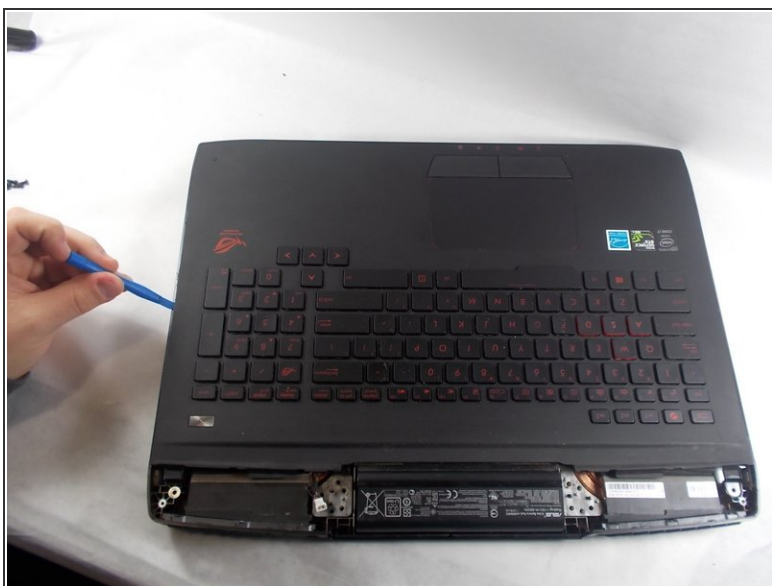
- Remove the 5mm Phillips #00 screws.
- Lift up the silver hinge brackets on each side of the laptop.

Step 7



- Remove the 5mm Phillips #00 screws from the hinges.
- Detach the ribbon cable and remove the display assembly from the laptop.

Step 8 — Keyboard Assembly



- Carefully lift the keyboard up, being careful to not damage the fragile ribbon connectors.
- Use an opening tool to detach the ribbon cables connecting the keyboard to the rest of the laptop.
- Remove the keyboard from the laptop.

To reassemble your device, follow these instructions in reverse order.