



Honda FC600 Tiller Throttle Lever Replacement

Replace a damaged throttle lever on the Honda FC600 tiller.

Written By: Craig Lloyd



INTRODUCTION

Follow this guide to replace a broken throttle lever on the Honda FC600 tiller.



TOOLS:

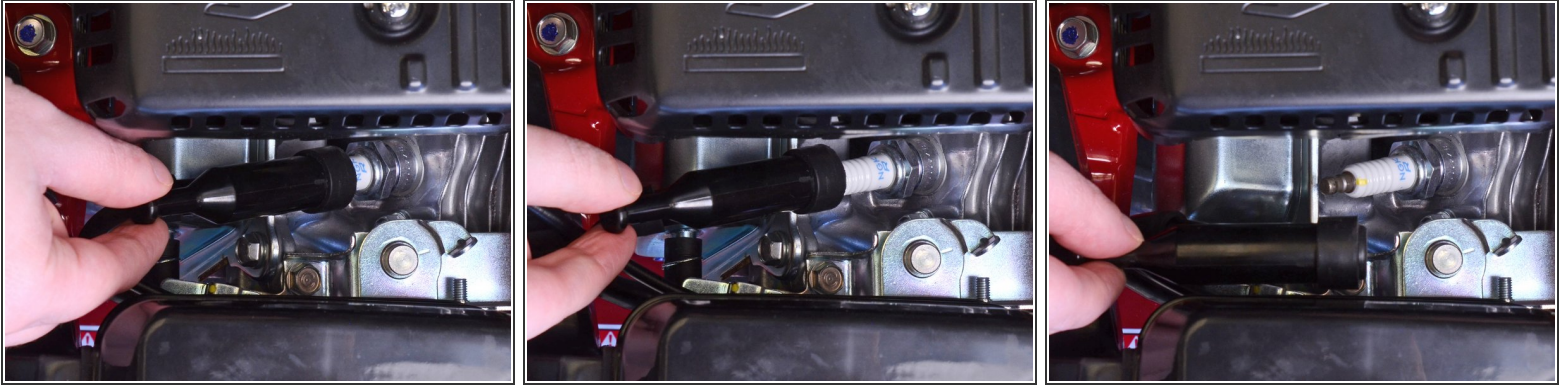
- [Phillips #2 Screwdriver](#) (1)
- [Flat Needle Nose Pliers](#) (1)



PARTS:

- [Honda Lever Assy., Throttle 17850-723-013](#) (1)

Step 1 — Remove the Spark Plug Cap



⚠ Before you begin, it's important that you completely cut power to the tiller by disconnecting the spark plug. This will prevent the engine from accidentally starting up while you're working on the tiller.

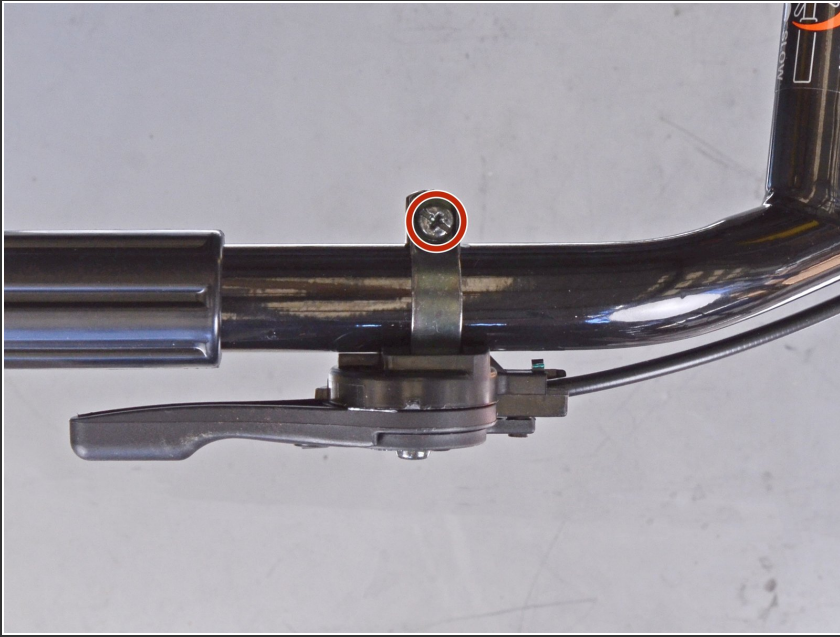
- Grab the spark plug cap and pull it straight out to disconnect the spark plug from the engine.

Step 2 — Preparation



- Push the throttle lever all the way down.

Step 3 — Remove the Throttle Lever



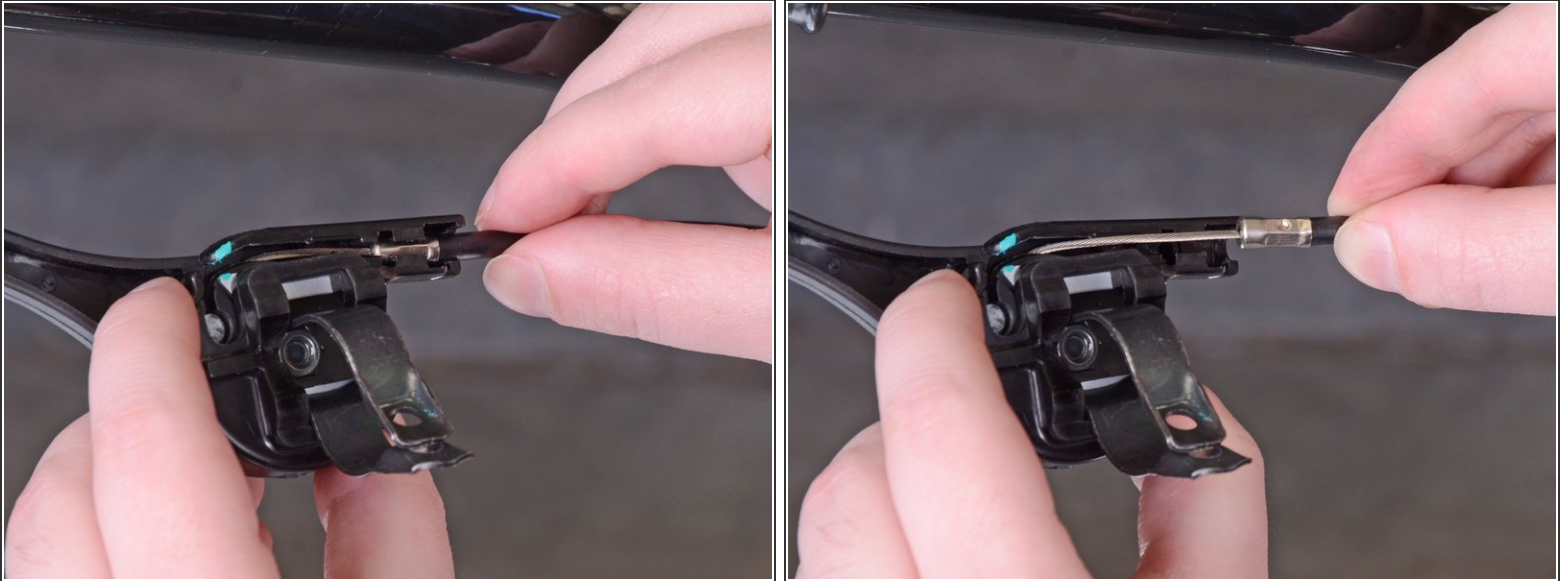
- Remove the 23 mm-long Phillips #2 screw securing the throttle lever to the handlebar.
- ⓘ This screw is accompanied by a square nut. Be sure to retain it for reassembly.

Step 4 — Remove the Small Throttle Cable Clip



- Use a pair of needle-nose pliers to remove the small clip attached to the throttle cable.

Step 5 — Remove the Throttle Cable



- Grab the open end of the throttle cable and pull it out of the throttle lever to free it from its recess.

Step 6



- Continue to lift the throttle cable out of the throttle lever, making sure it clears the openings in the recess.

To reassemble your device, follow these instructions in reverse order.