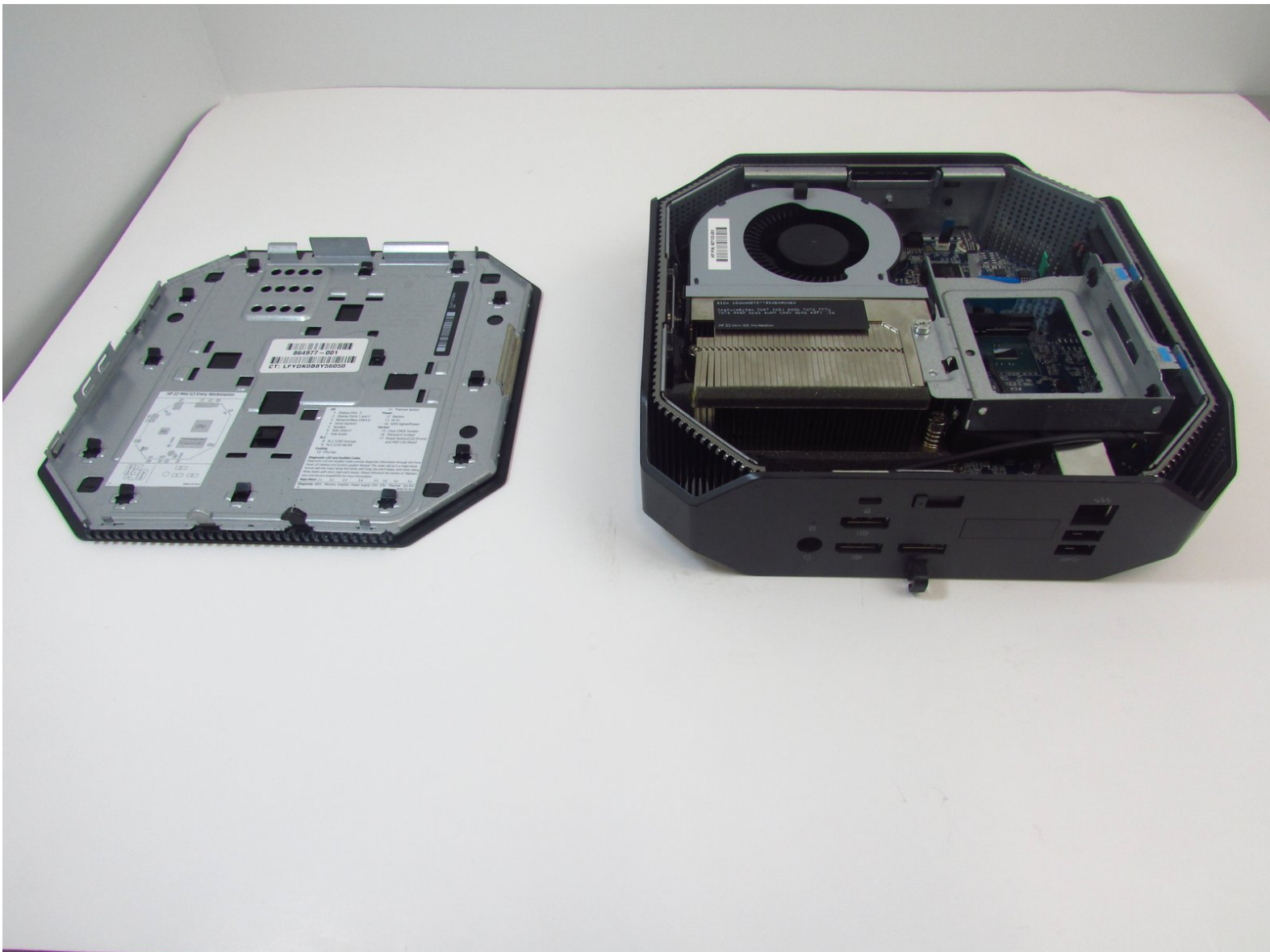




# HP Z2 Mini G3 Access Panel Replacement

How to remove the HP Z2 Mini G3 Access Panel (Product No. 1LE81UP#ABA).

Written By: Christian Ogburn



## INTRODUCTION

This is the top cover to access the interior components of the HP Z2 Mini G3 (Product No. 1LE81UP#ABA). This guide can direct you to remove the panel.

Be sure to turn off the device and disconnect the A/C power cord before removing the panel.

Components inside the device are also subject to static damage, so try and work on a hard surface to reduce this risk.

## Step 1 — Access Panel



- Turn the device so the back-side of the device is facing you.

⚠ Be sure that the power is off and the A/C power cord has been disconnected before starting. Removing hardware while the power is on could damage the device or harm yourself.

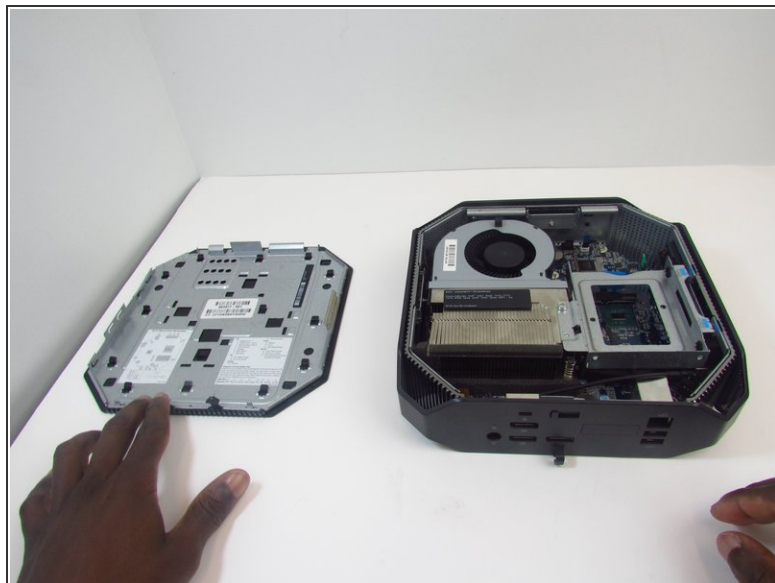
⚠ Components of the device are subject to static damage. Work on a hard, grounded surface to prevent damage to the workstation.

## Step 2



- Slide and hold the latch in the direction of the engraved arrow (to the right).

## Step 3



- While holding the latch, lift the access panel upwards and towards yourself and set it aside upside-down.

To reassemble your device, follow these instructions in reverse order.