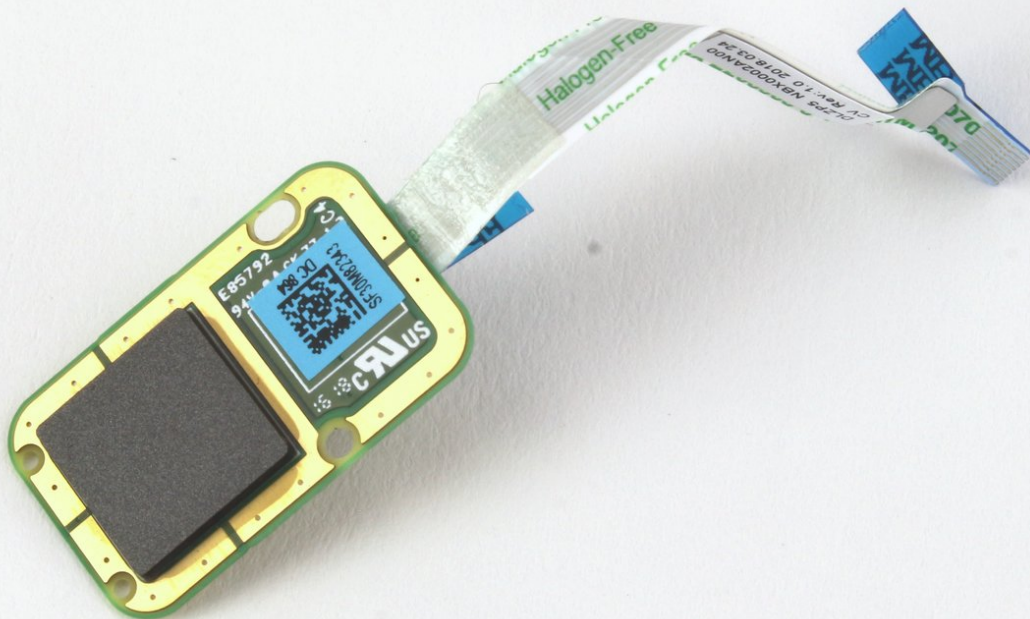




Lenovo YOGA 730-15IKB Fingerprint Reader Replacement

This guide describes the steps required to replace the fingerprint reader on a Lenovo YOGA 730-15IKB.

Written By: Daniel Rodriguez Salinas



INTRODUCTION

Follow this guide to replace the fingerprint reader in your Lenovo YOGA 730-15IKB. The fingerprint reader recognizes your unique fingerprint and allows you to easily unlock the laptop.

See the [troubleshooting page](#) first to diagnose any software issues related to the fingerprint reader. If your fingerprint reader is scratched or does not recognize your fingers, you might need to replace it with a new, functional model.



TOOLS:

- [ESD Safe Tweezers Blunt Nose](#) (1)
- [T5 Torx Screwdriver](#) (1)
- [iFixit Opening Tool](#) (1)
- [Phillips #1 Screwdriver](#) (1)



PARTS:

- [Lenovo Yoga 730-15 Fingerprint Sensor](#) (1)

Step 1 — Bottom Cover



⚠ Turn off the computer and unplug the charger before going any further.

- Flip the laptop over so you can see the underside.
- Remove the ten 7mm T5 Torx screws.

Step 2



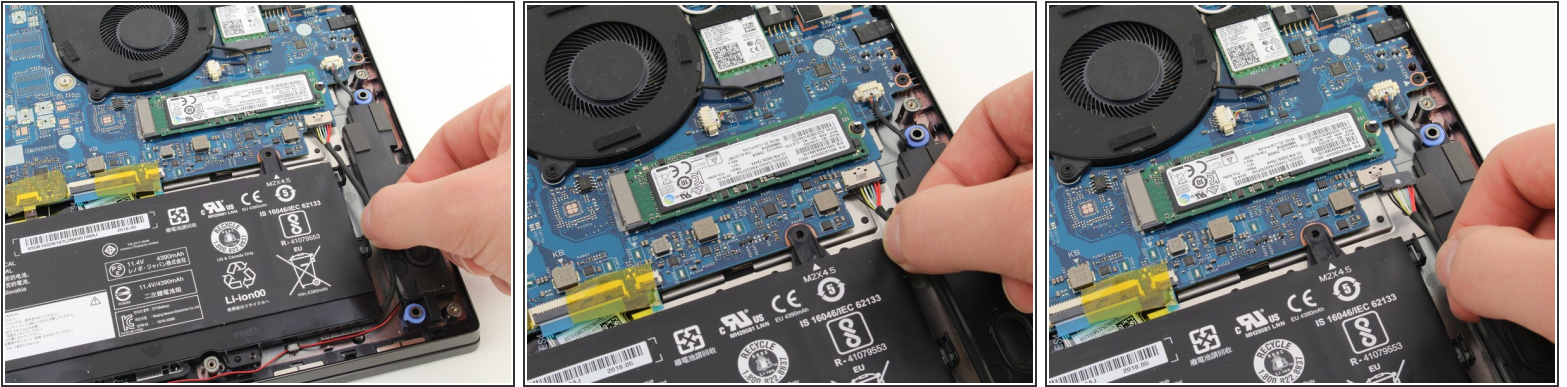
- Pry up the bottom cover with an opening tool.
 - Start at the front edge of the cover and make your way along the sides.

Step 3



- Pull the bottom cover up and away from the back hinges.

Step 4 — Battery

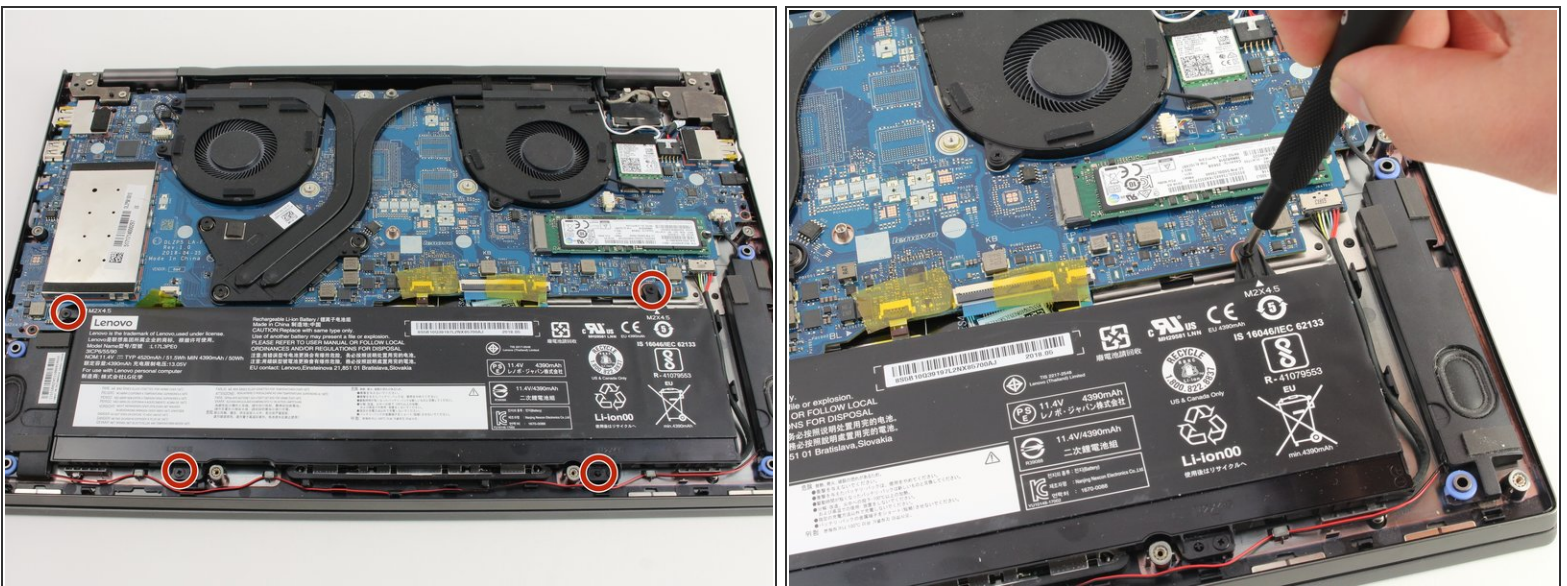


- Disconnect the battery from the motherboard by gently pulling the battery cable using your fingers or a pair of tweezers.

⚠ Pull parallel to the battery, not straight up.

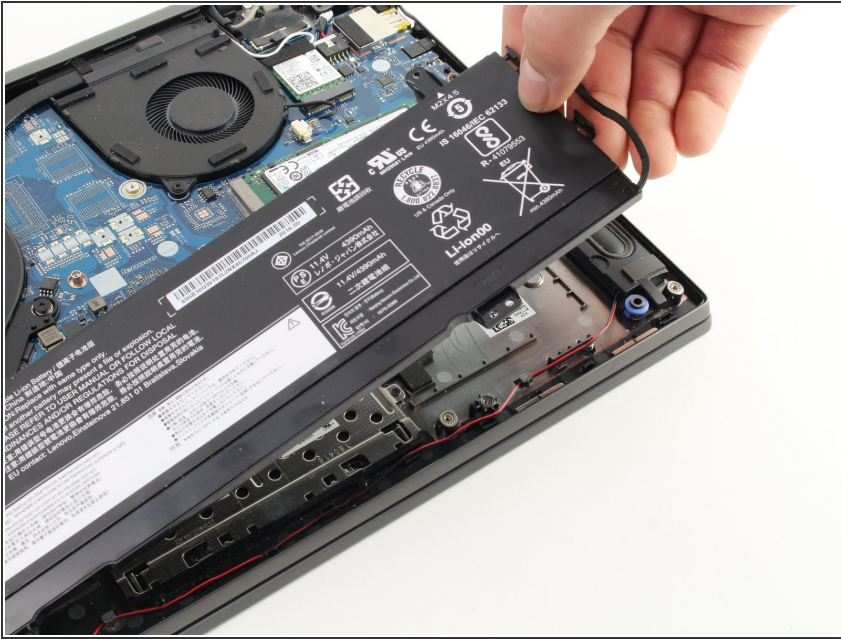
ⓘ Unplug the cable gently as the eight wires on the connector are very small and delicate.

Step 5



- Remove the four 4mm Phillips #1 screws securing the battery.

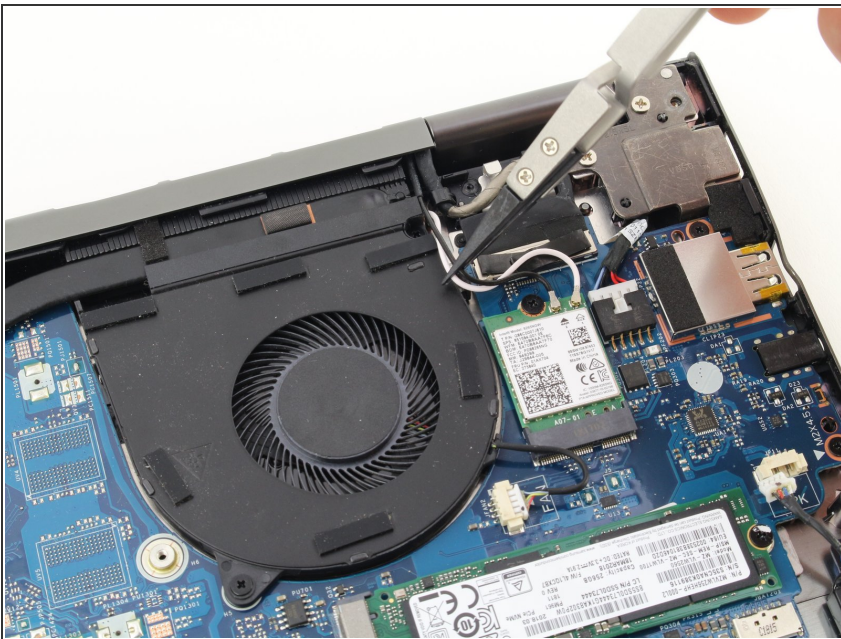
Step 6



- Lift the battery up and out of the chassis.

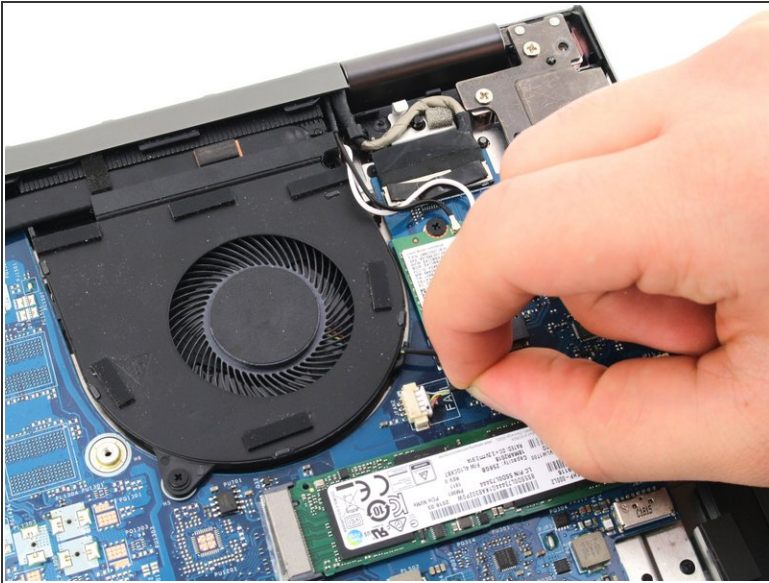
⚠ Handle the battery carefully.
Touching the terminal may cause electric shock. Puncturing the battery may cause it to catch fire.

Step 7 — Left Fan



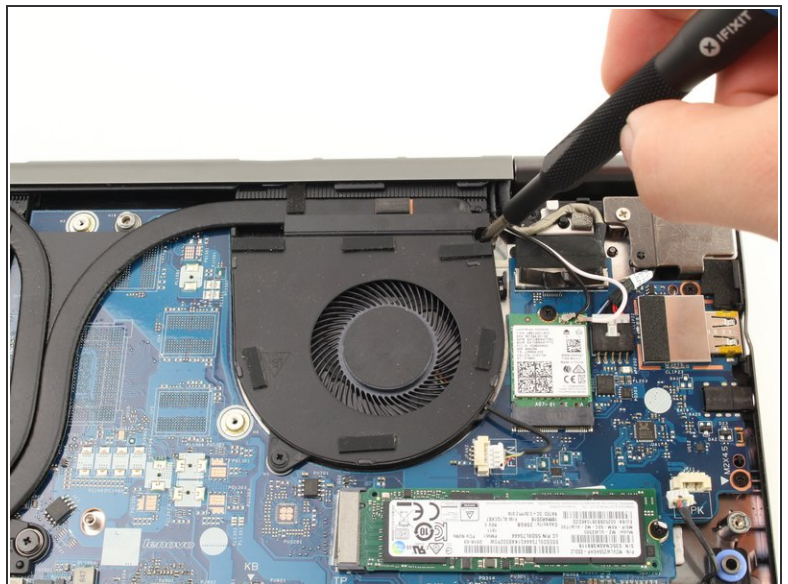
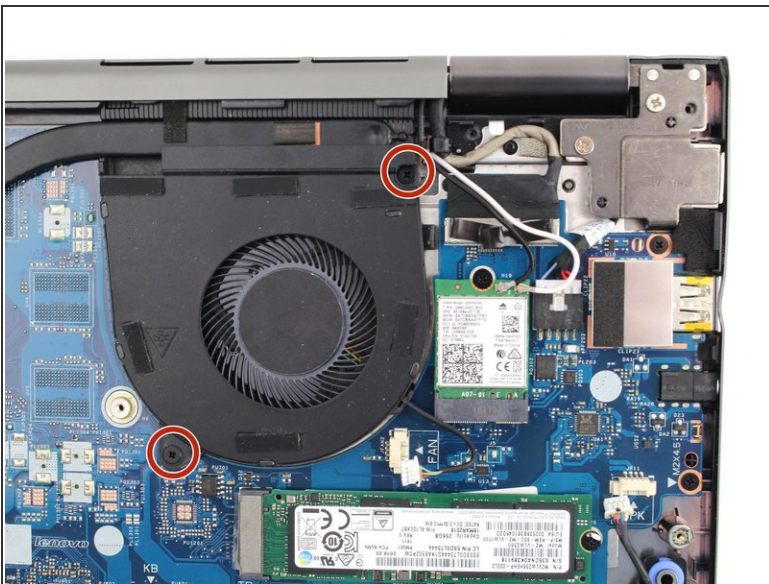
- ① When the laptop is upside down, the left fan is on the right side of the laptop near the wireless card and the SSD.
- Remove the black and white antenna wires from the groove on the right side of the fan.

Step 8



- Disconnect the fan cable. Pull the wire toward the right side of the laptop while wiggling to loosen the connection.
- You can also use the white tabs on the connector to push the cable free.

Step 9



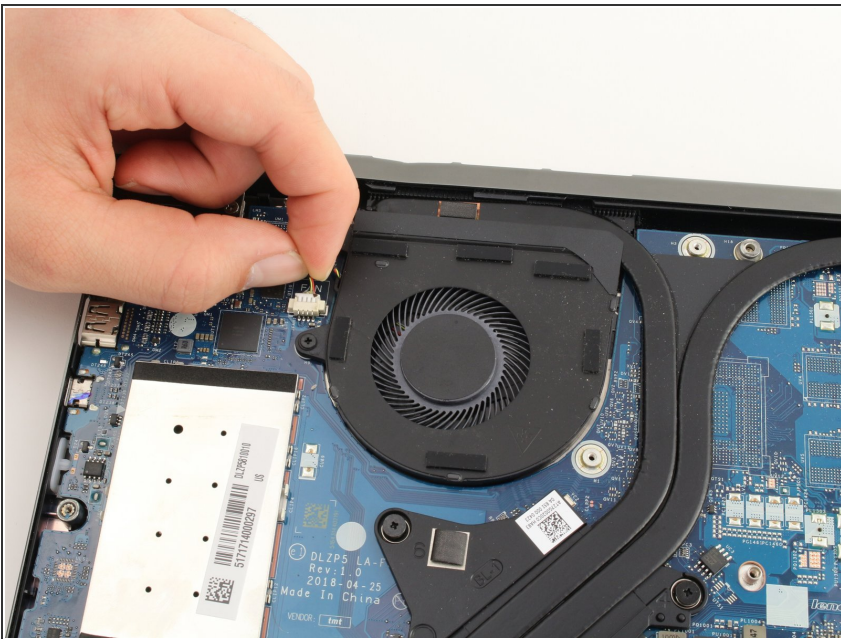
- Remove two 4mm Phillips #1 screws.

Step 10



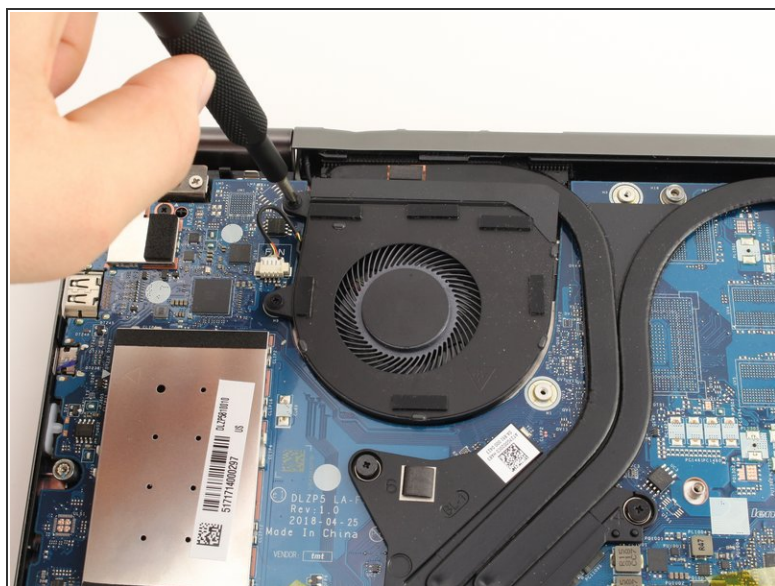
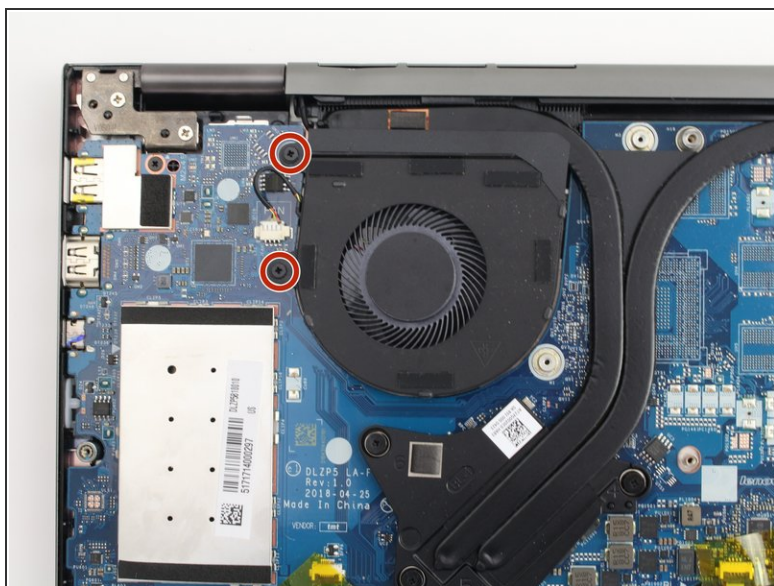
- Pull the fan up and towards the front of the laptop.

Step 11 — Right Fan



- ⓘ When the laptop is upside down, the right fan is on the left side of the laptop near the large metal RAM cover.
- Disconnect the fan cable. Pull the wire toward the back of the laptop while wiggling to loosen the connection.
- You can also use the white tabs on the connector to push the cable free.

Step 12



- Remove two 4mm Phillips #1 screws.

Step 13



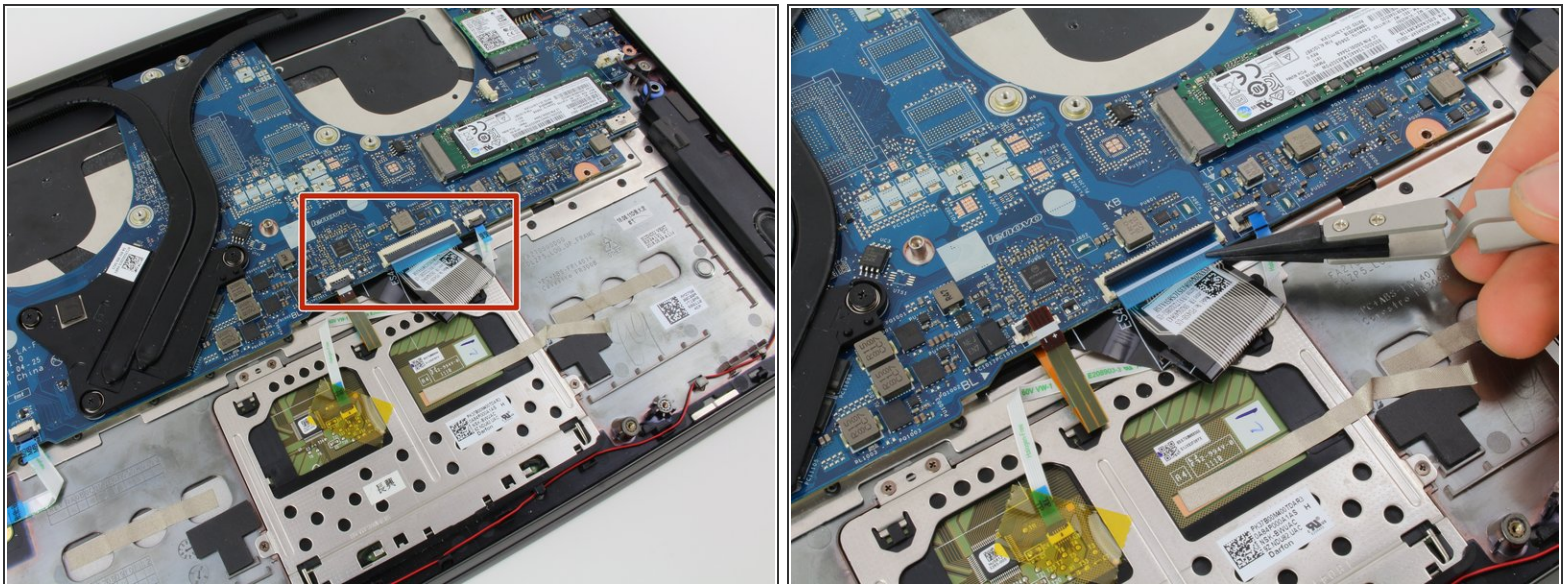
- Pull the fan up and towards the front of the laptop.

Step 14 — Motherboard



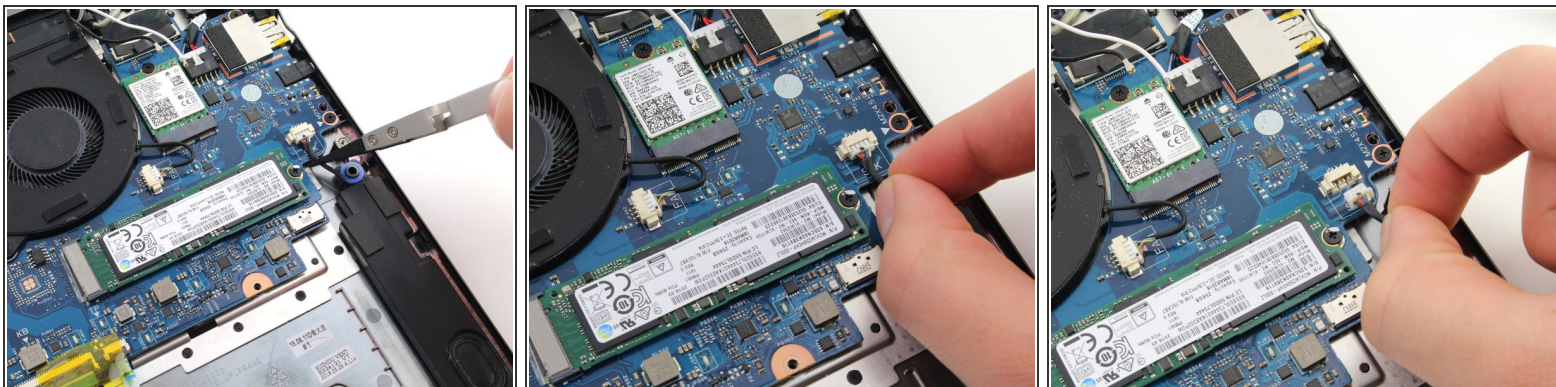
- Remove the fingerprint reader ribbon cable located at the bottom left of the motherboard.
 - Pull up on the black tab on the connector.
 - The ribbon cable should easily pull out of the connector.

Step 15



- Remove the three other ribbon cables at the lower edge of the motherboard.
 - For each, lift up the black tab on the connector.
 - The ribbon cables should easily pull out of the connectors.

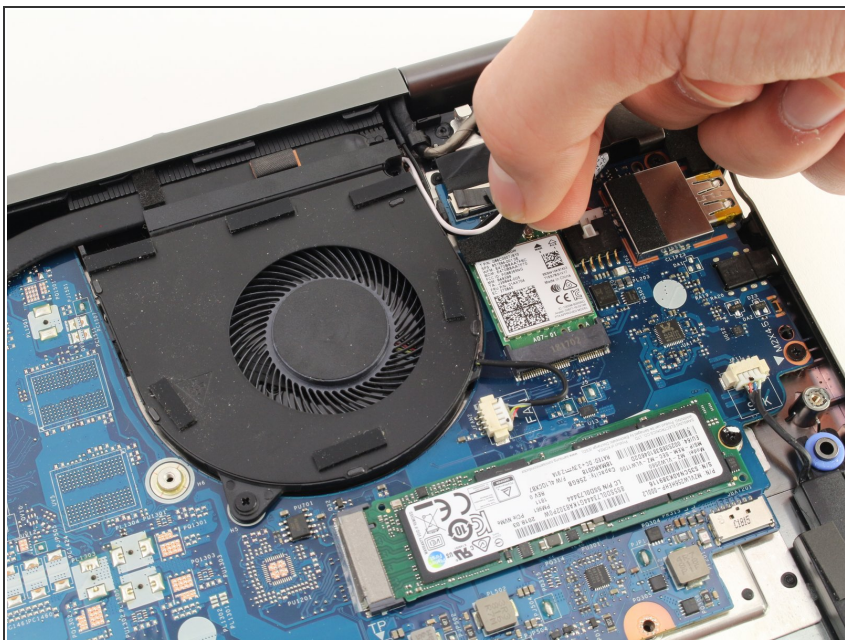
Step 16



- Disconnect the speaker cable by pulling the wire towards the front of the laptop.

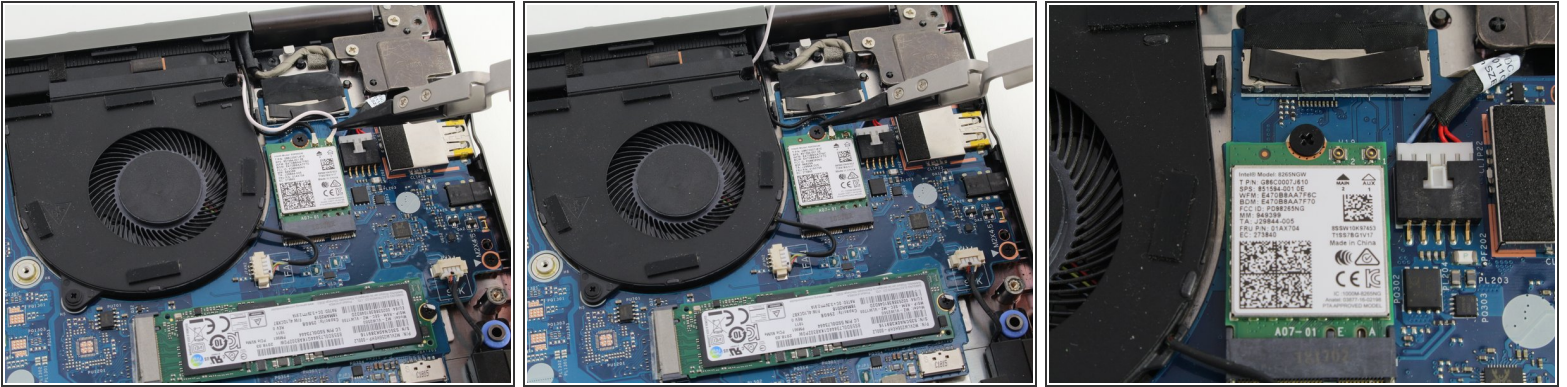
i You can also use the white tabs on the connector to push the cable free.

Step 17



- Remove the sticky tape from the top of the wireless card.

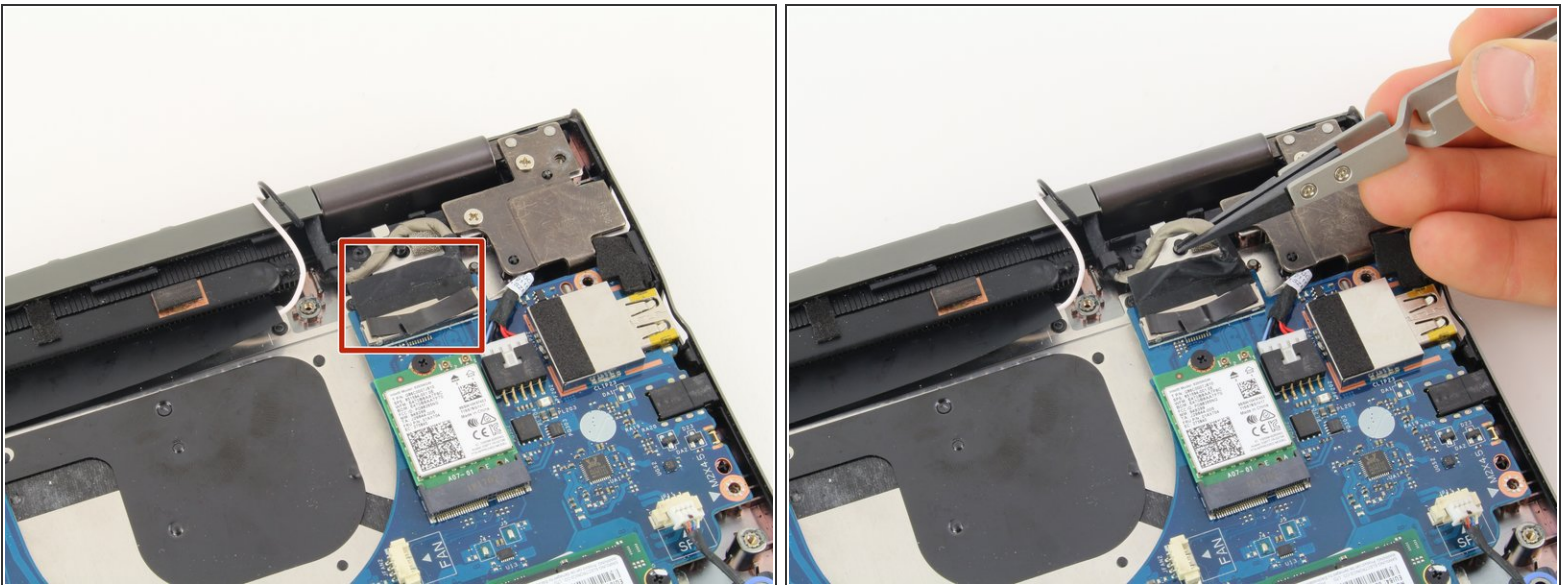
Step 18



- Pull the black and white antenna wires off of the wireless card.

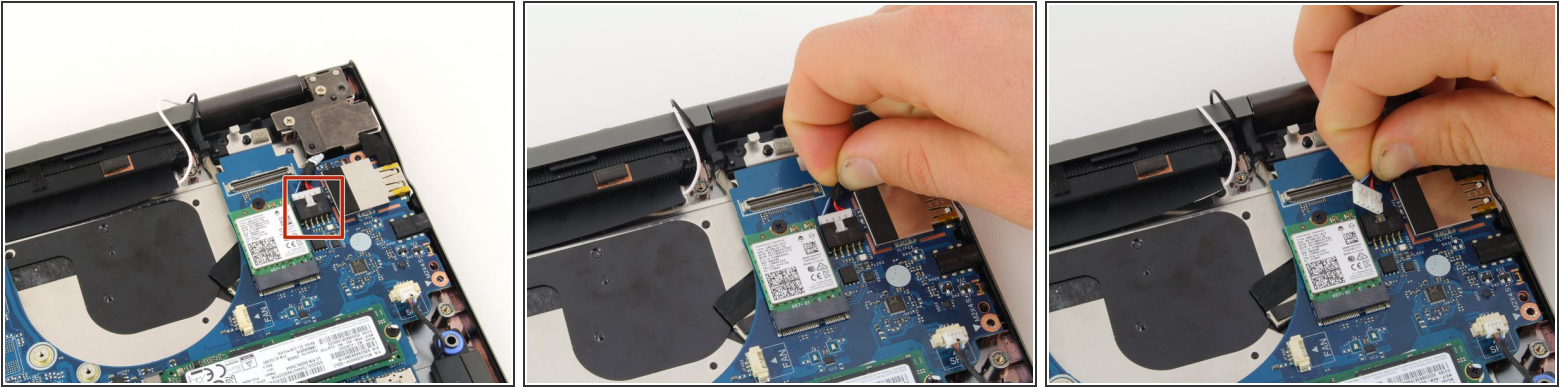
☑ For reassembly, the white wire connects to the right terminal marked "1." The black wire connects to the left terminal marked "2."



Step 19



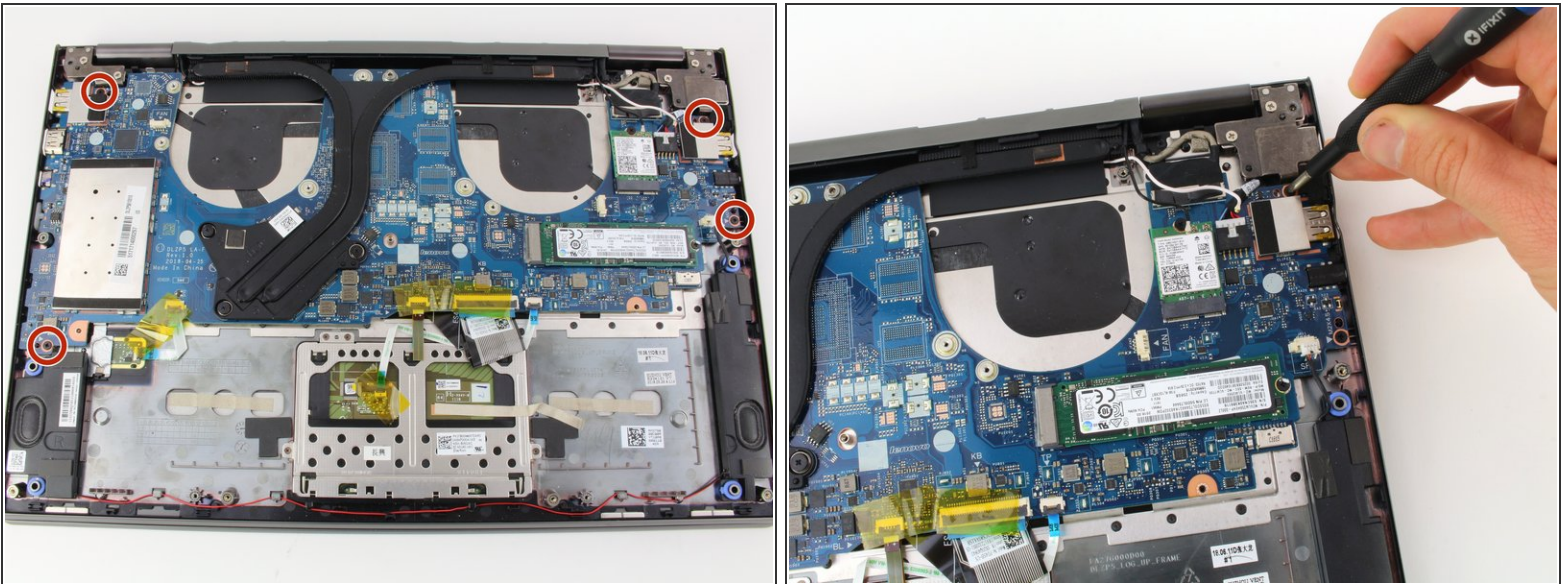
- Pull up on the thick gray display cable near the back of the laptop to disconnect the display.

Step 20



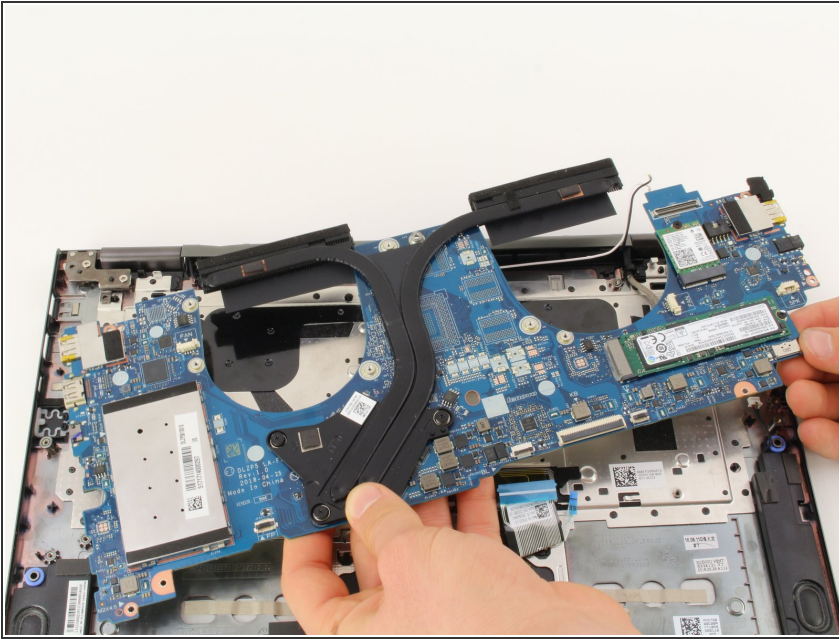
-  The charger port is connected to the computer by a cable at the top left of the motherboard.
- Disconnect the cable by pulling the bundle of wires firmly toward the back of the laptop.
-  The cable requires some force to remove. Make sure you do not damage the connector or cable.

Step 21



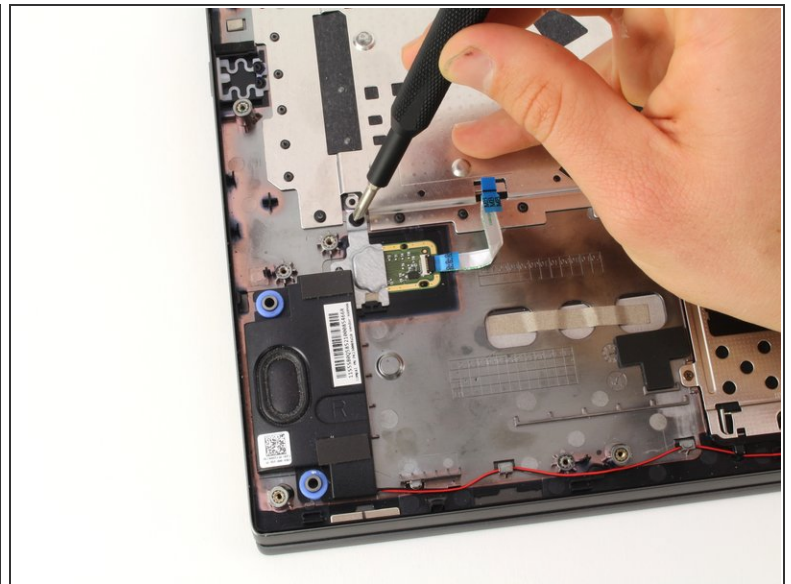
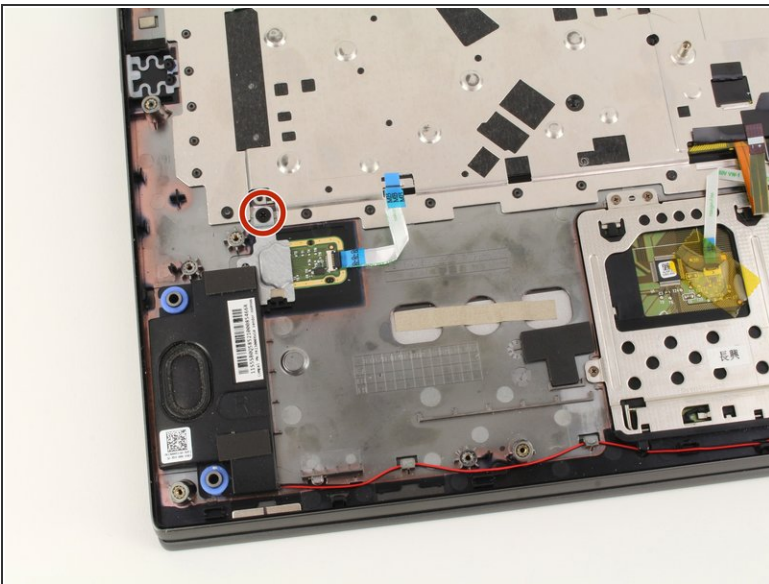
- Remove four 4mm Phillips #1 screws.

Step 22



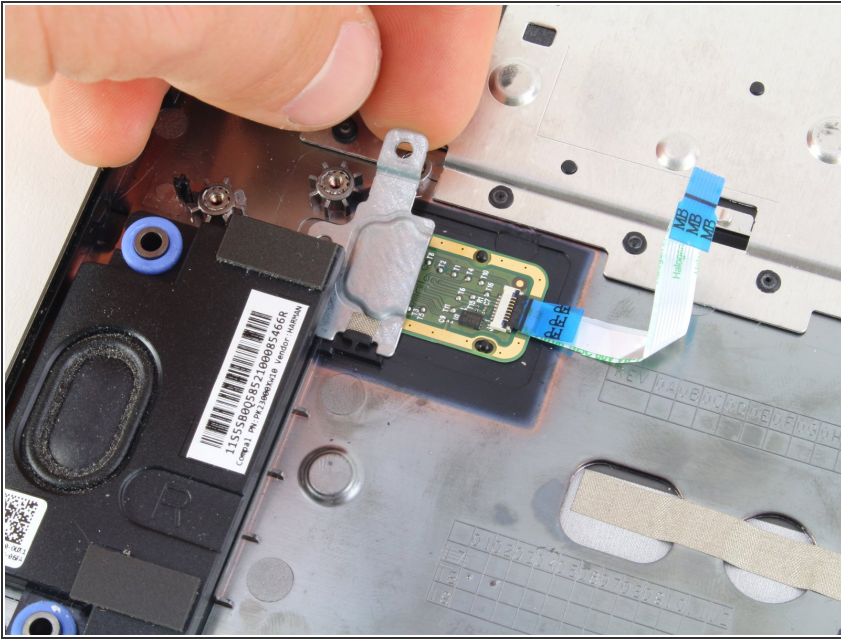
- Pull the motherboard up out of the laptop chassis.
- ⓘ If you are replacing the motherboard, make sure to remove the [SSD](#), [wireless card](#), [heat sink](#), and extra [RAM](#). Transfer these components to the new motherboard.

Step 23 — Fingerprint Reader



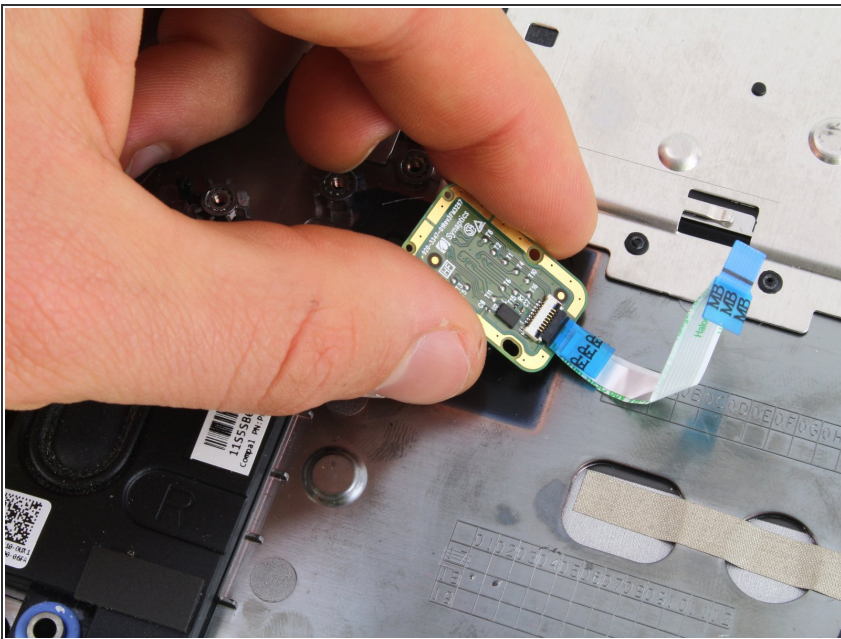
- Remove one 2mm Phillips #1 screw.

Step 24



- Remove the small metal plate from above the reader.
- ❗ The ribbon should be kept in case the new fingerprint reader doesn't come with a new ribbon to connect it to the motherboard.

Step 25



- Pull the fingerprint reader up out of the chassis.

To reassemble your device, follow these instructions in reverse order.