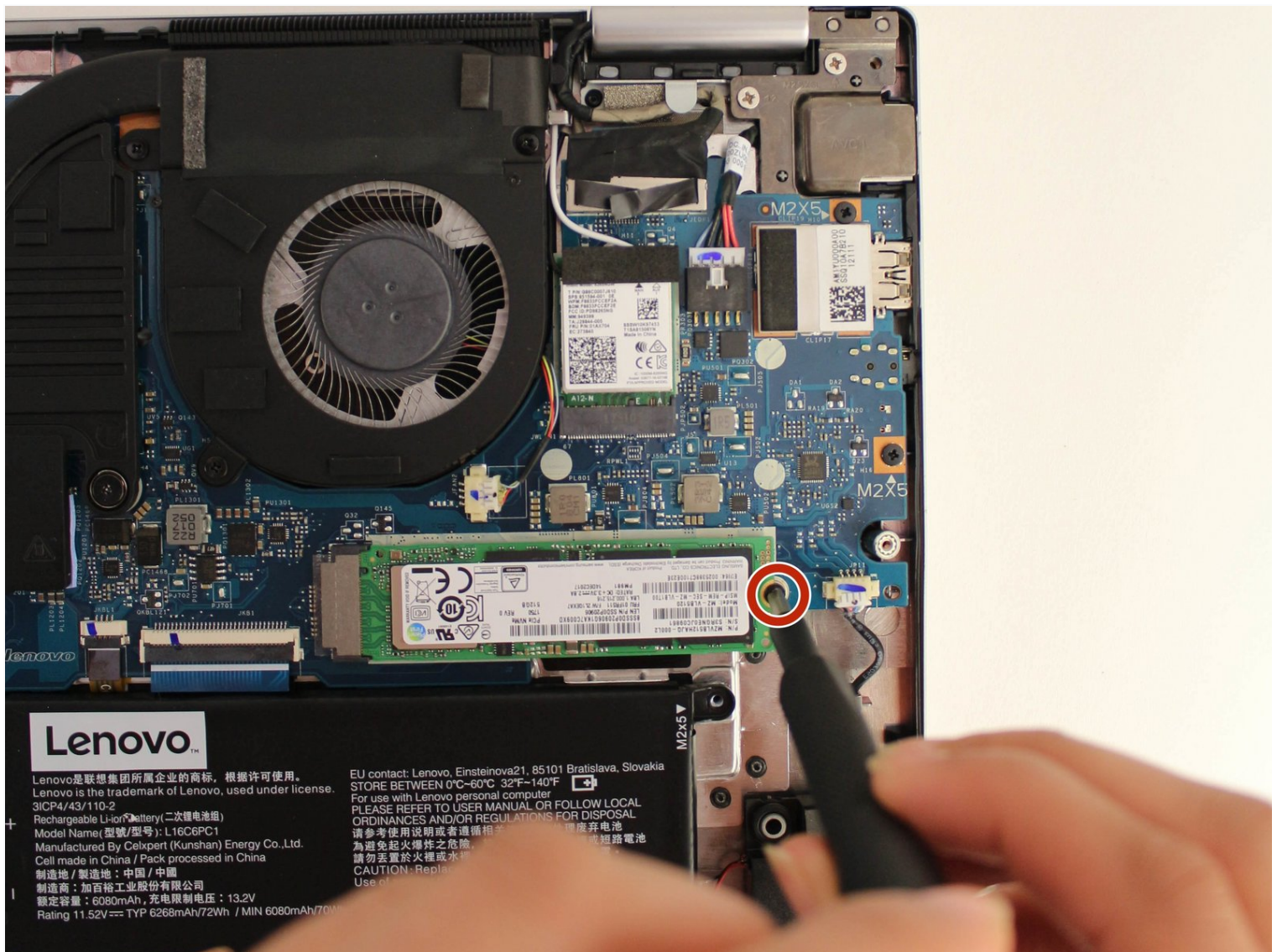




Lenovo Yoga 720-15IKB SSD Replacement

This guide shows you how to replace the Lenovo...

Written By: Jeremy Kostel



INTRODUCTION

This guide shows you how to replace the Lenovo Yoga 720 15-1KB (88YG7000828) SSD. This laptop is very similar to the Lenovo Yoga 720 13-inch , the Yoga 710, and the Yoga 730. A faulty SSD can cause your data to be fragmented or even destroyed. These symptoms are further explained on the [troubleshooting page](#).

TOOLS:

T5 Torx Screwdriver (1)
iFixit Opening Tool (1)

PARTS:

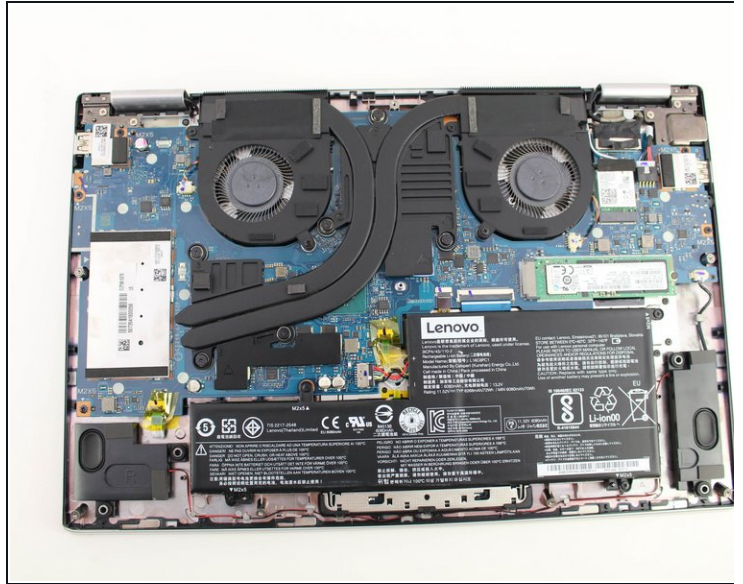
Crucial P3 NVMe PCIe M.2 2280SS SSD (1)
Crucial P3 Plus NVMe PCIe M.2 2280SS SSD (1)
Crucial P5 Plus PCIe M.2 2280SS SSD (1)

Step 1 — Bottom Cover



- Power off the device before starting.
- Flip the device over with the hinges facing away from you.
- Remove seven 5.0 mm Torx T5 screws.
- Remove three 9.5 mm Torx T5 screws.

Step 2



- Pry around the edges from one side to another with a plastic opening tool.

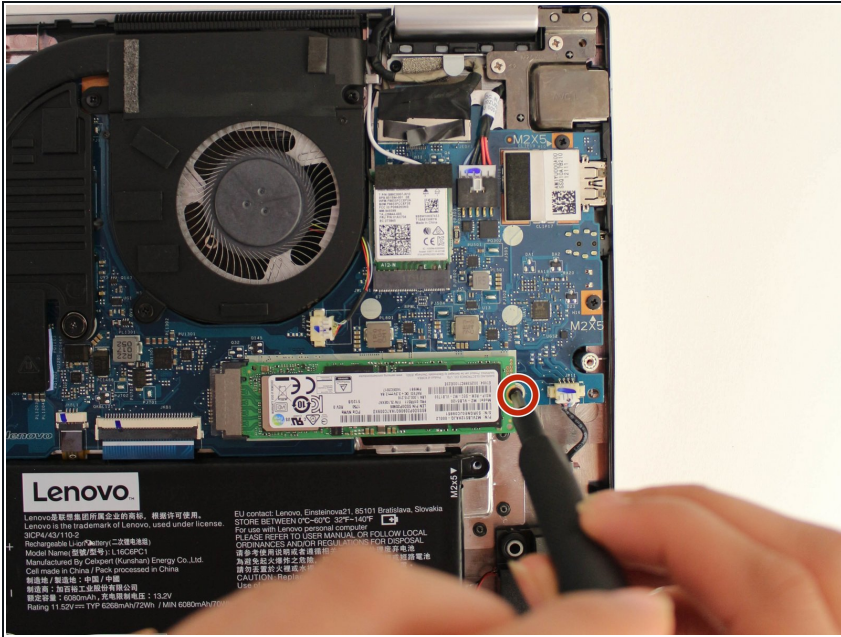
⚠ Do not pry on the side with the hinges because this can break the cover.

- Lift the case from the front until you feel resistance.

⚠ Do not keep lifting after you feel resistance, or the bottom cover can break.

- Pull the cover towards you, away from the hinges.
- Completely lift off the cover.

Step 3 — SSD



- Remove the one JIS #1 screw holding the SSD.

Step 4



- Tilt the SSD away from the screw hole.
- Pull out the SSD away from the socket it is plugged into.

To reassemble your device, follow these instructions in reverse order.

