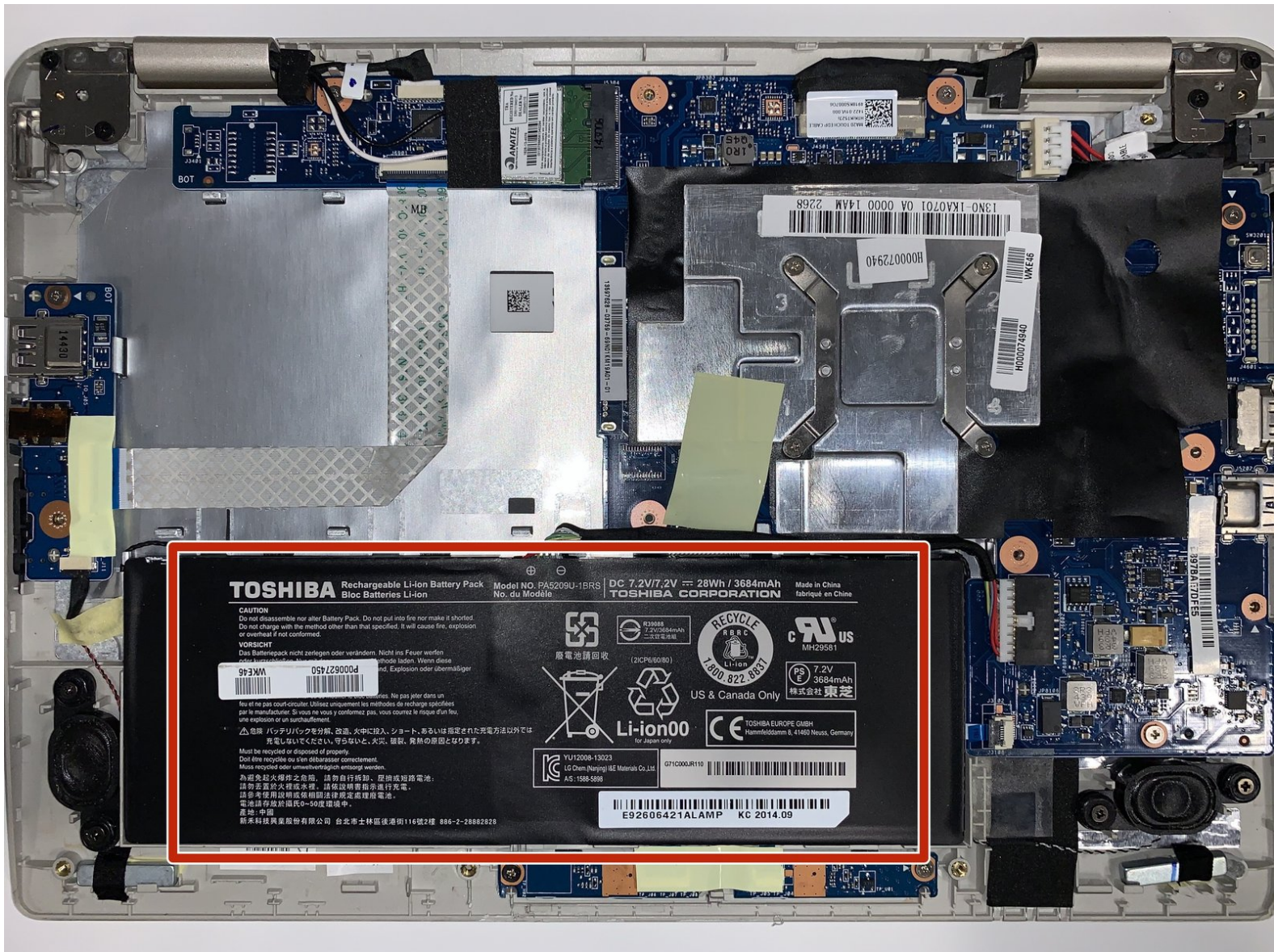




# Toshiba L15W-B1303 Battery Replacement

This guide will show you how to replace the battery in a Toshiba Satellite L15W-B1303.

Written By: Peyton Campbell



## INTRODUCTION

Use this guide to replace the battery in your Toshiba Satellite L15W-B1303.

The battery is a very important component of your laptop and is its main source of power. A battery that doesn't work properly will result in your laptop not turning on or shutting off at random times. This is very dangerous because you can lose important work and files on your laptop depending on when the laptop decides to shut off.

Before deciding to replace your battery, check out the troubleshooting guide first. On many occasions, the battery in your laptop can work properly again with a new charging adapter and/or cable.

If you have a swollen battery, follow this guide [here](#). **A swollen battery can be potentially dangerous and cause a fire or explode; remove it yourself with extreme caution.**

Be sure to turn your laptop off before starting the replacement process.



### TOOLS:

- [J00 JIS Screwdriver](#) (1)
- [iFixit Opening Tools](#) (1)
- [Spudger](#) (1)

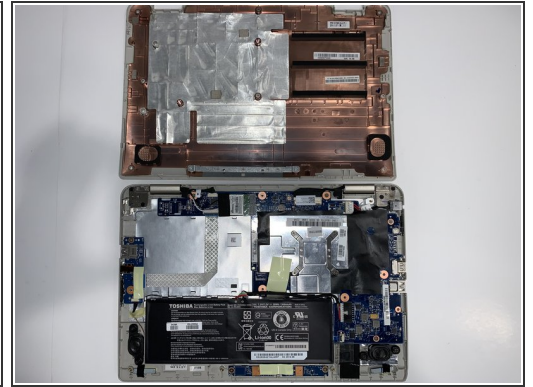
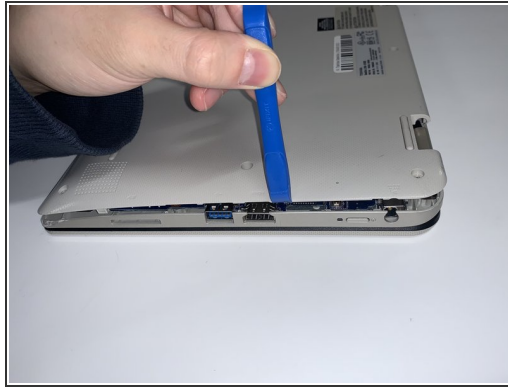
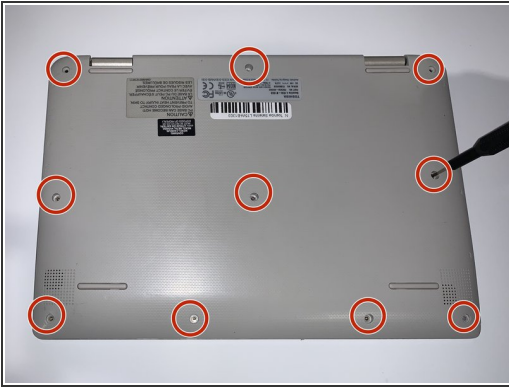


### PARTS:

- [Toshiba Battery PA5209U-1BRS](#) (1)

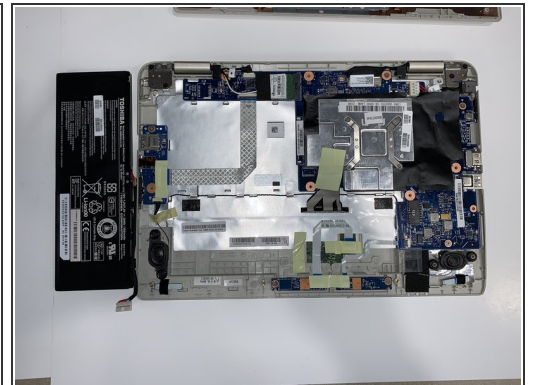
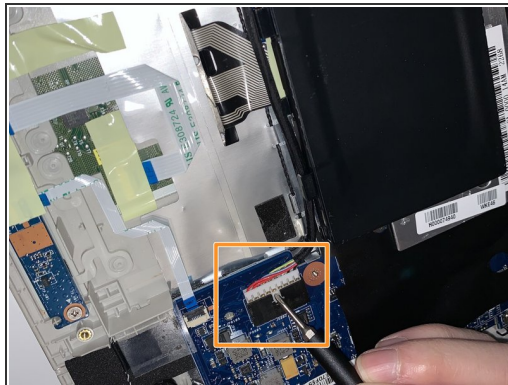
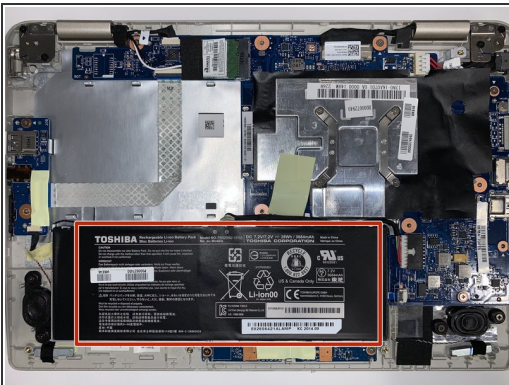


## Step 1 — Bottom Panel



- Turn the laptop over and place it on its top side.
- Remove ten 10mm JIS #00 screws from the bottom panel of the laptop.
- Using the iFixit opening tool, remove the bottom panel of the laptop.

## Step 2 — Battery



- Lift the battery and remove it from the laptop.
- ⚠ The battery's cable connector is still attached to the laptop, so lift the battery out carefully.
- Disconnect the battery carefully from the port by detaching the connector with a plastic opening tool or a spudger.

To reassemble your device, follow these instructions in reverse order.