



# How to Fix a Screw-less Jammed Flexi Retractable Dog Leash

Fix a screw-less jammed Flexi retractable dog leash, with only a screw driver, by opening it up, untangling the leash, and clearing debris.

Written By: [deleted]



---

## INTRODUCTION

Passionate about your dog? Unable to take them out because their Flexi leash is no longer retracting? Successful maintenance of a Flexi dog leash requires knowledge of how to reuse and [fix your screw-less leash](#). With only a screwdriver and 15 minutes of your time, you will learn how to repair the retracting mechanism in your screw-less Flexi brand retractable dog leash to make it usable. This guide will minimize waste and help you save money on buying a brand new dog leash.



### TOOLS:

- [6-in-1 Screwdriver](#) (1)
-

## Step 1 — How to Fix a Screw-less Jammed Flexi Retractable Dog Leash



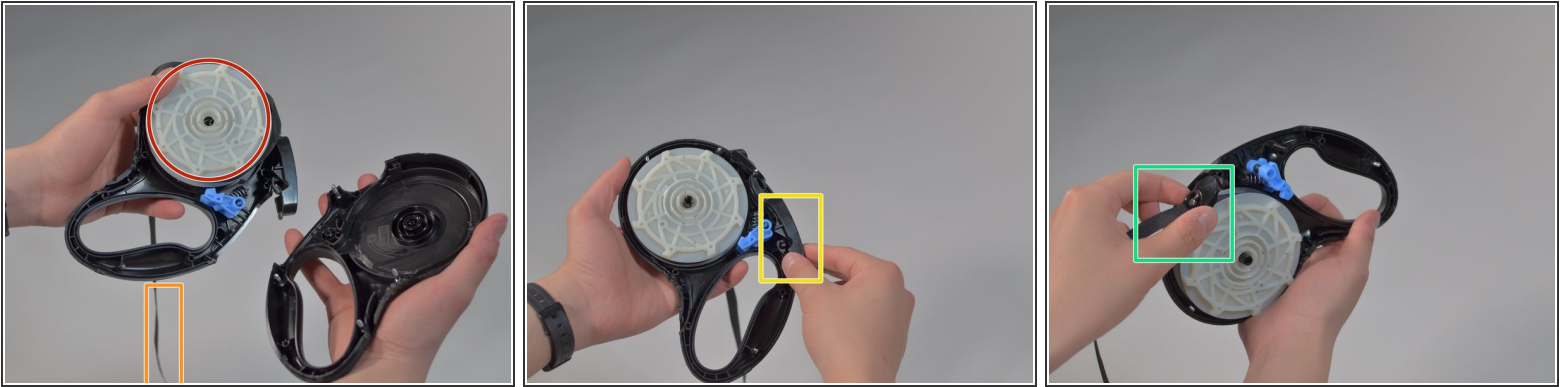
- Locate the detachable T-shaped opening at the bottom of the dog leash.
- Insert a pry tool into the bottom of the "T".

## Step 2



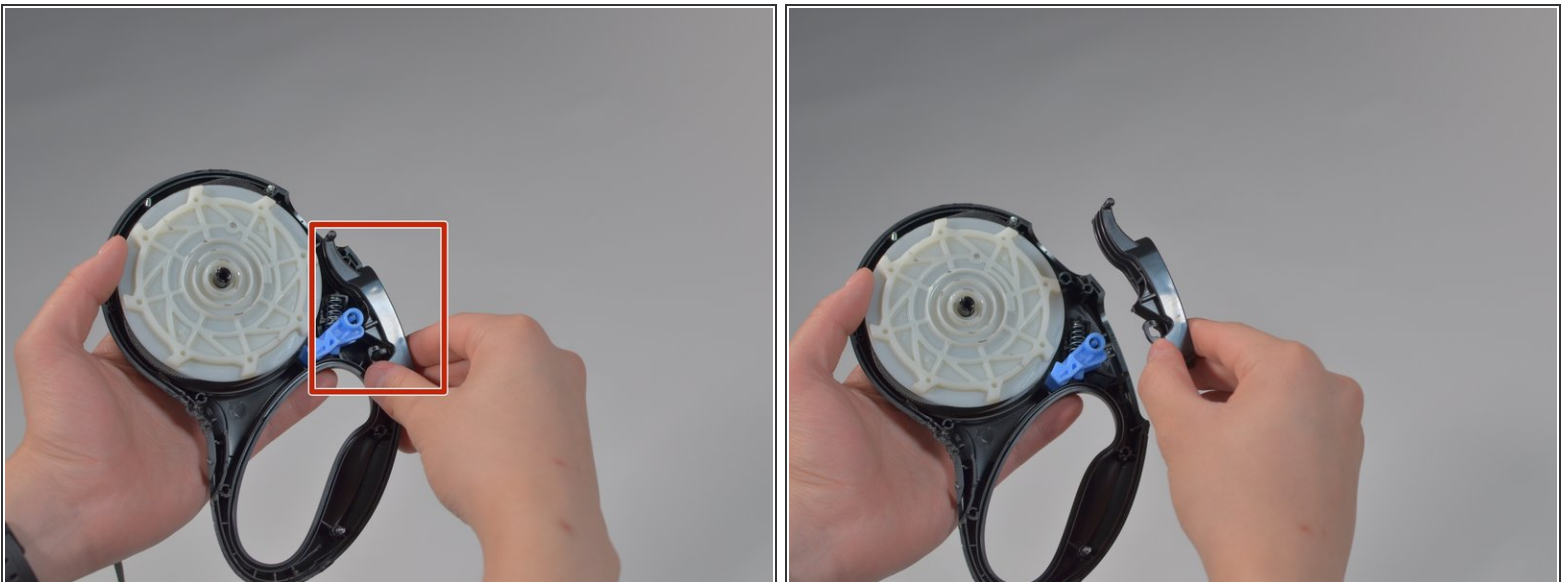
- Insert fingers into the gap made by the screwdriver and pull apart.
  - ⓘ The case may take some effort to pry apart.
- Completely separate the two halves of the case.
  - ⓘ The leash lock, rope, roll, and detachable hole that allows the roll out of the case are not attached to the case and may fall out upon opening the case.

### Step 3



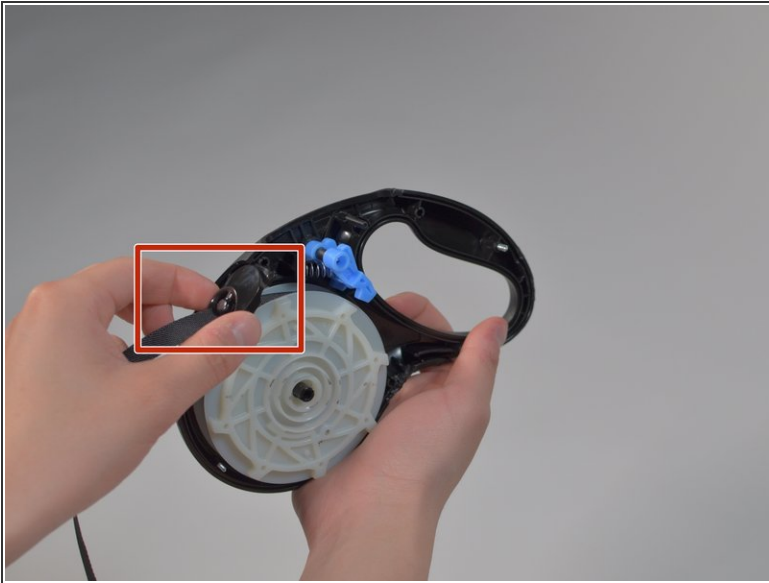
- Examine the exposed components.
  - Leash Roll
  - Leash Rope
  - Leash Lock
  - Detachable hole that allows the rope out of the case

### Step 4



- Lift up the leash lock to remove it from the case and place it aside.

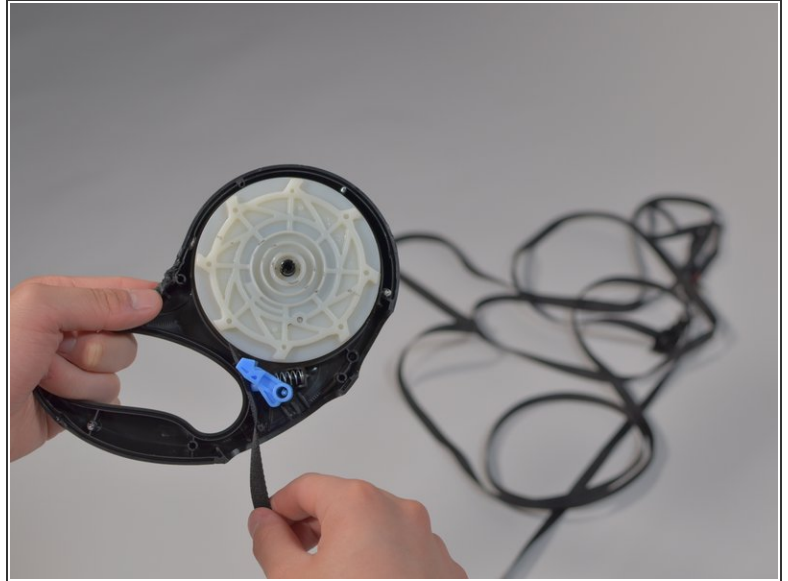
## Step 5



- Lift up the detachable hole that allows the rope out of the case. Remove it from the case and place it aside.



## Step 6



- Examine the coil of the rope around the roll to spot any issues.
  - ❗ Issues may include tangles, twists, knots, or debris.
- Unravel the rope from the roll in a counter-clockwise motion.
  - Remove any tangles, twists, knots, or debris interfering with the rope.

## Step 7



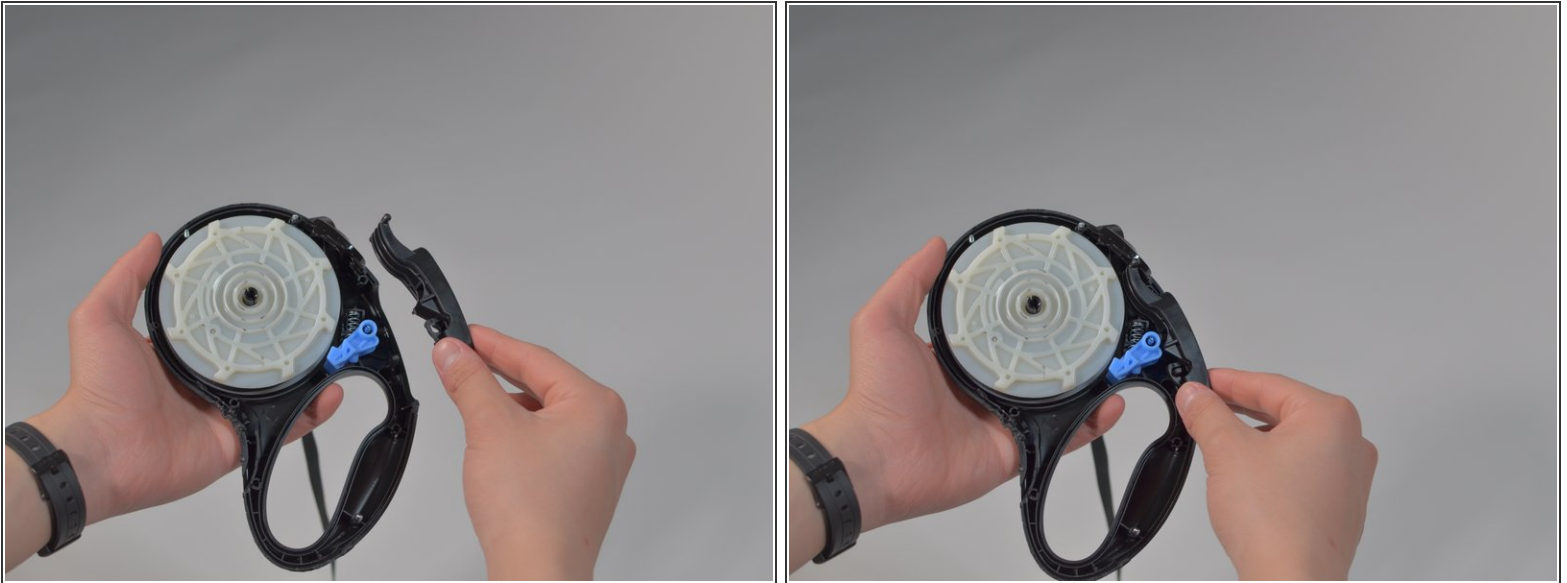
- Let the rope wind back up, making sure to keep it aligned, straight, and flat against the roll.

## Step 8



- Replace the detachable hole that allows the rope out of the case into its slot at the top of one of the case halves.
- ☑ Keep the case on a flat surface after reattachment to ensure the leash opening does not fall out while replacing other components.

## Step 9



- Place the leash lock back into its place behind the detachable hole that allows the rope out of the case, and on top of the spring.

## Step 10



- Find the locking screws on both halves of the cases.
- Align the locking screws with their corresponding holes.
- Place the two case halves atop one another and clamp the two halves together.



## Step 11



- Press together very tightly to finish reassembly.