



Toshiba Satellite L15W-B1303 Touchpad Board Replacement

How to replace the touchpad board in the Toshiba Satellite L15W-B1303

Written By: Yanchen Li



INTRODUCTION

Use this guide if you're experiencing problems with the Toshiba Satellite L15W-B1303's touchpad. The touchpad is a component of the laptop that translates your finger strokes into commands that move the cursor on your computer screen.

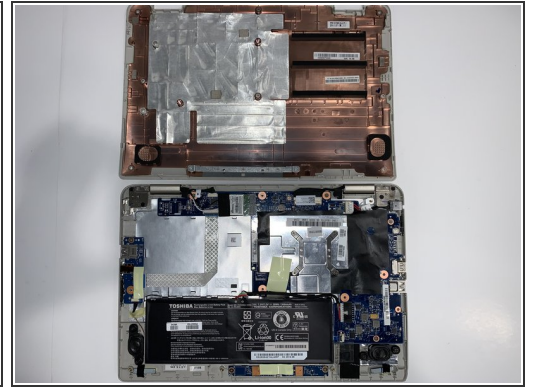
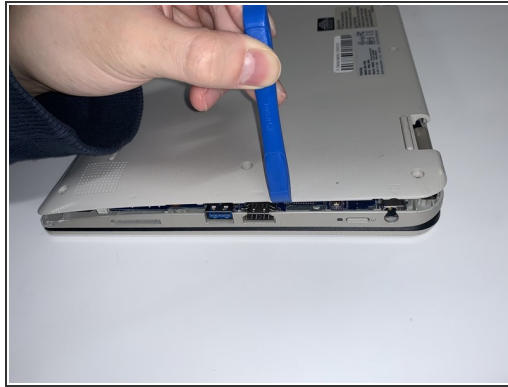
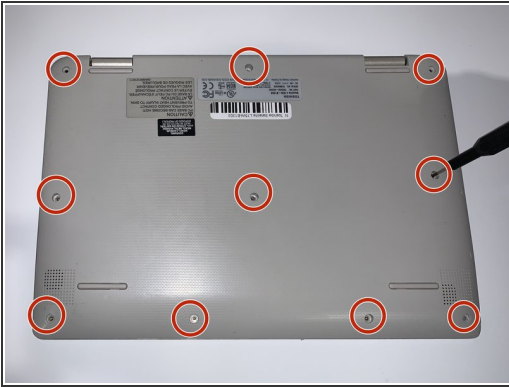
If the touchpad has poor finger tracking, is unresponsive, or does not function, then first try cleaning it. Dirt and grime can build up over extended use of the touchpad and this could hamper its ability to register your finger strokes. Another possible source of problems could be missing drivers or other support software. Visit the manufacturer's website to check for the latest drivers.

If you continue to have problems, then it might be necessary to replace the touchpad board inside the laptop. This guide will show you how to do this.

TOOLS:

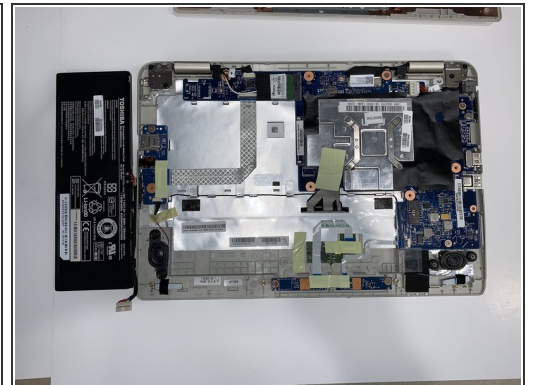
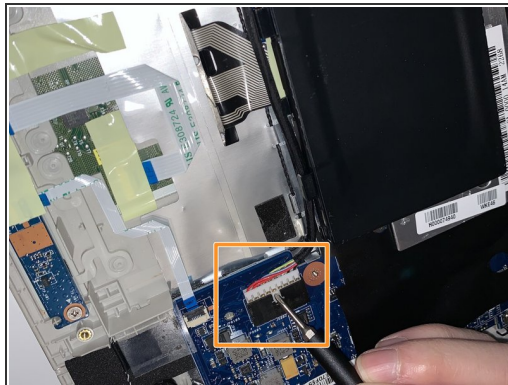
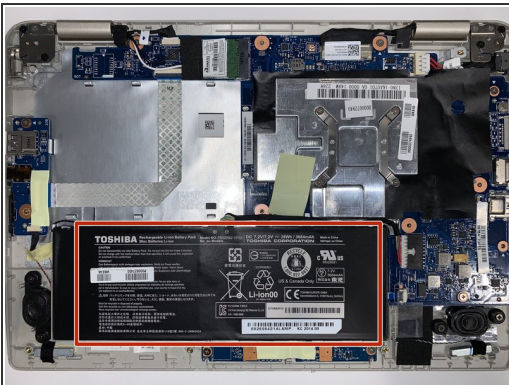
- [iFixit Opening Tools](#) (1)
 - [Spudger](#) (1)
 - [J00 JIS Screwdriver](#) (1)
 - [Phillips #0 Screwdriver](#) (1)
-

Step 1 — Bottom Panel



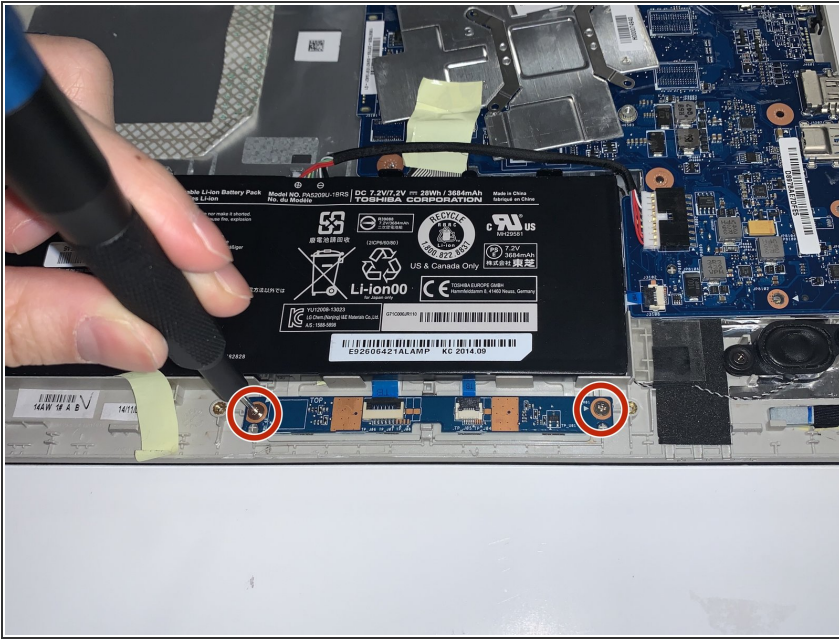
- Turn the laptop over and place it on its top side.
- Remove ten 10mm JIS #00 screws from the bottom panel of the laptop.
- Using the iFixit opening tool, remove the bottom panel of the laptop.

Step 2 — Battery



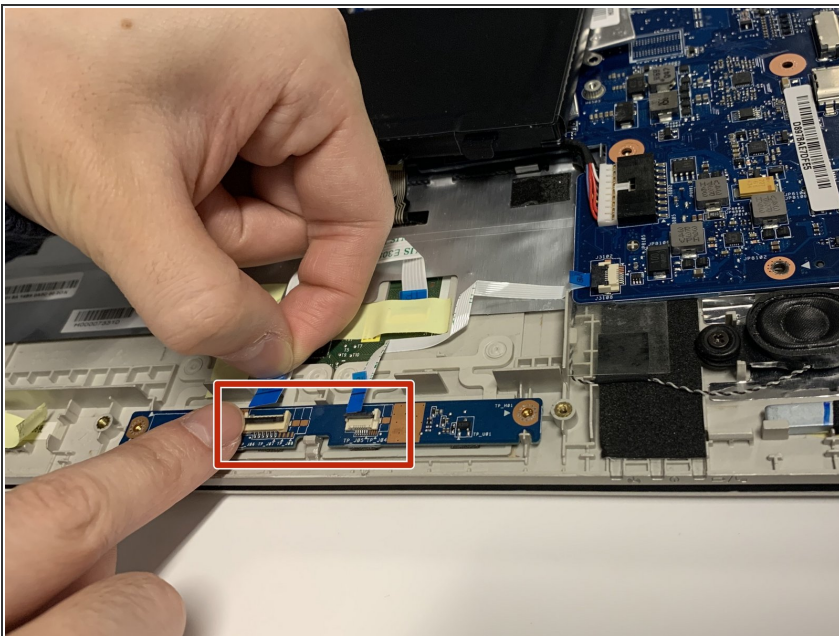
- Lift the battery and remove it from the laptop.
- ⚠ The battery's cable connector is still attached to the laptop, so lift the battery out carefully.
- Disconnect the battery carefully from the port by detaching the connector with a plastic opening tool or a spudger.

Step 3 — Touchpad Board



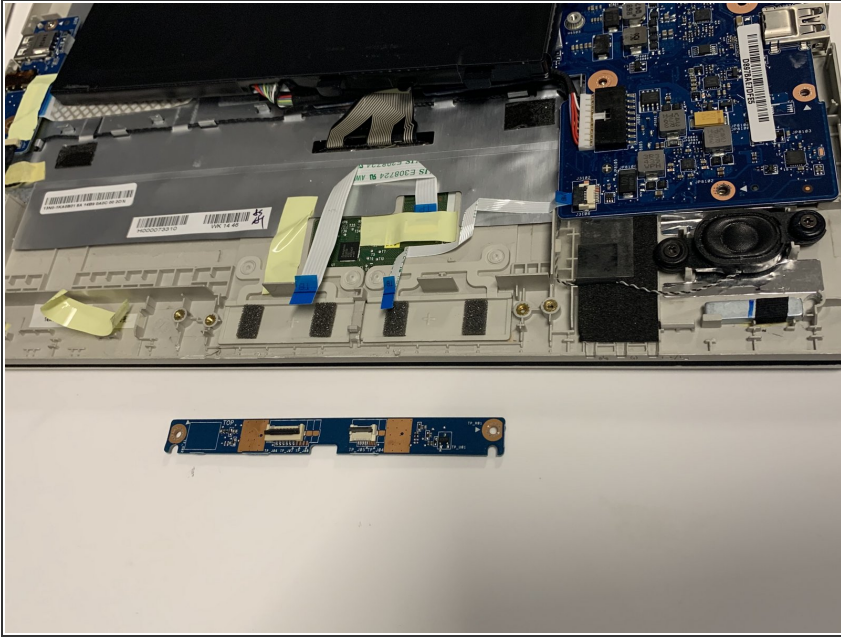
- Remove any pieces of tape securing the board.
- Using your Phillips #0 screwdriver, remove both screws holding the board in place.

Step 4



- Gently disconnect the cables that link the touchpad board to the rest of the laptop
- ⚠ Be careful when doing this. It can be easy to damage the components. If the connector seems stuck, try wiggling it; do not force it off.

Step 5



- Remove the board from the laptop.

To reassemble your device, follow these instructions in reverse order.