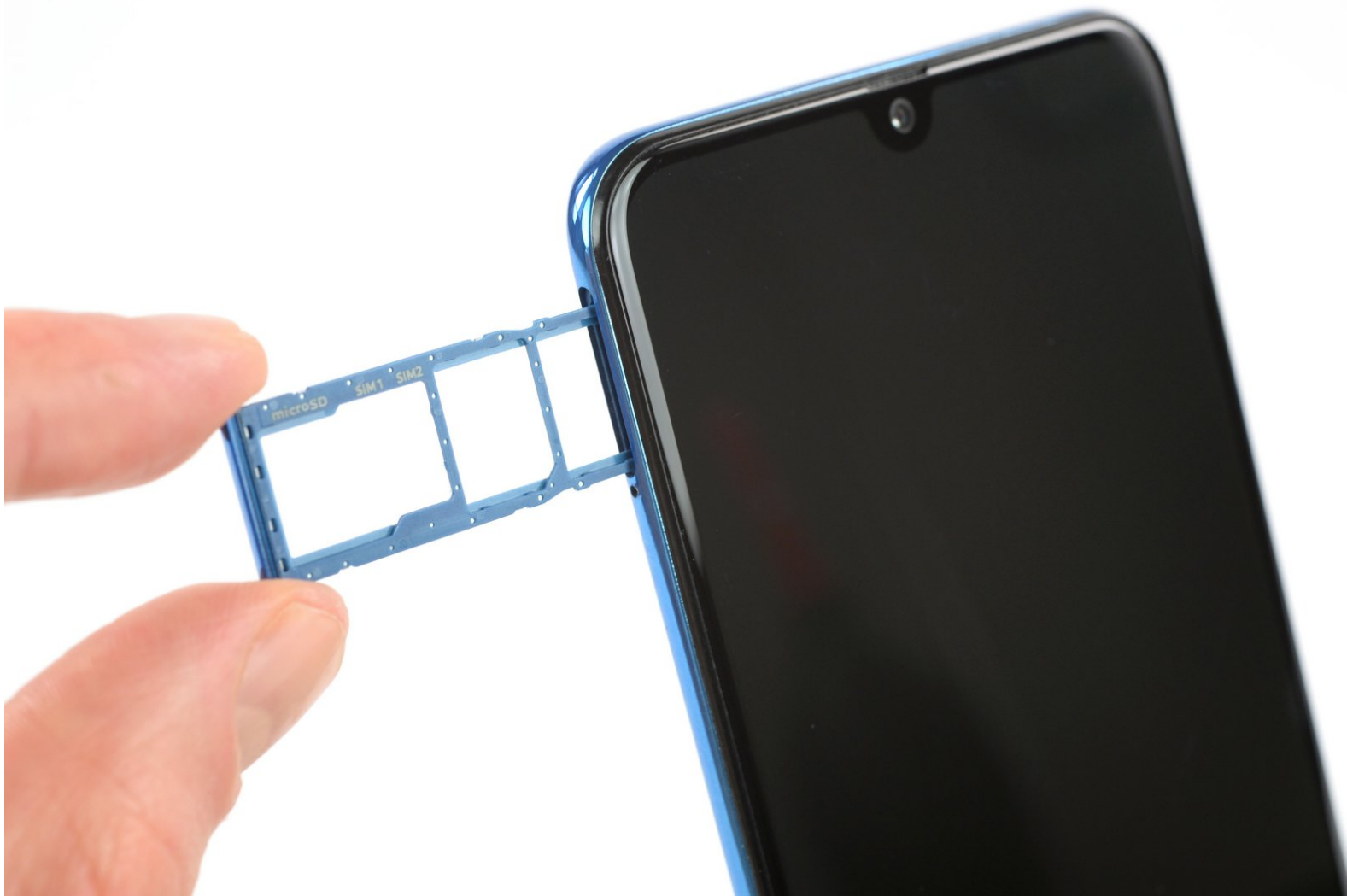




Samsung Galaxy A50 SIM Tray Replacement

How to eject the dual tray to remove or replace the SIM card or microSD card in the Samsung Galaxy A50.

Written By: Adriana Zwink



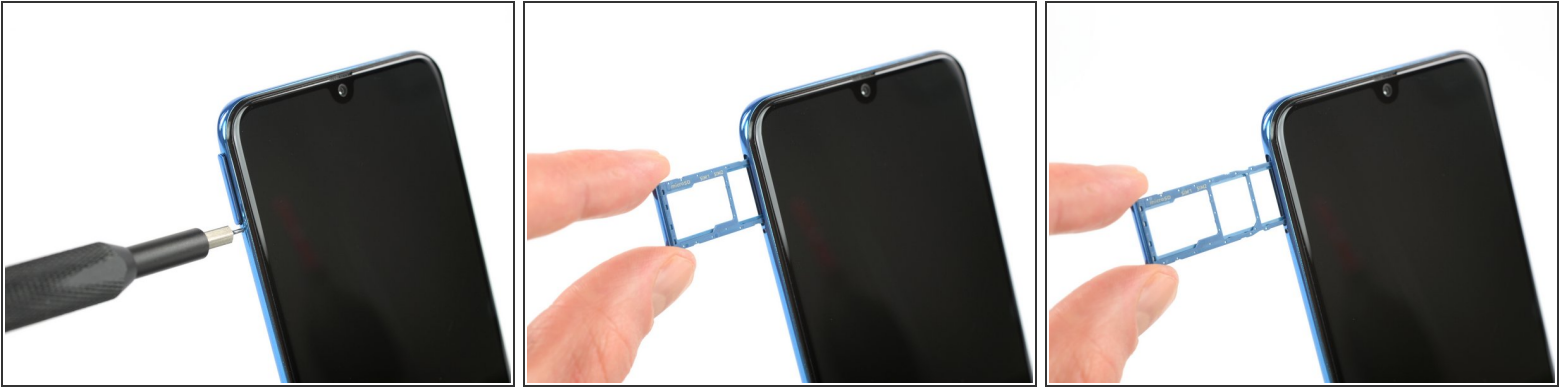
INTRODUCTION

Use this guide to eject the SIM card tray in your Samsung Galaxy A50. Ejecting this hybrid SIM tray allows you to add a microSD memory card, replace the nano SIM card or add a second nano SIM card.

TOOLS:

- [SIM Card Eject Tool](#) (1)
-

Step 1 — Samsung Galaxy A50 SIM Tray Replacement



- Insert a SIM card eject tool, a SIM eject bit or a straightened paper clip **into the hole on the SIM tray** located at the left side of the phone.
 - Press firmly to eject the tray.
 - Remove the SIM card tray.
- ★ When reinserting the cards, make sure to properly orient them in the tray.