



Samsung Galaxy A50 Screen Replacement

Use this guide to replace a cracked or broken...

Written By: Adriana Zwink



INTRODUCTION

Use this guide to replace a cracked or broken screen in your Samsung Galaxy A50.

Note: The function of the fingerprint sensor might be lost after this screen replacement. Security patches installed after September 2020 don't support this repair.

This guide instructs you to replace only the screen while leaving the original frame and motherboard in place. However, some replacement screens for this phone come pre-installed in a new frame (a.k.a. chassis), which requires a very different procedure. Make sure you have the correct part before starting this guide.

Before disassembling your phone, discharge the battery below 25%. The battery can catch fire and/or explode if accidentally punctured, but the chances of that happening are much lower if discharged.

You'll need **replacement adhesive** to reattach components when reassembling the device.



TOOLS:

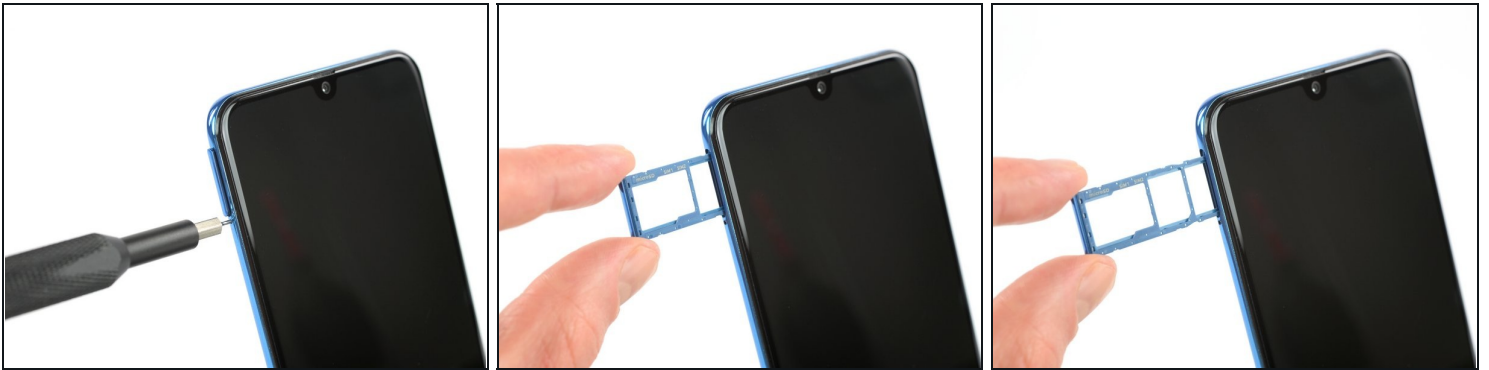
[SIM Card Eject Tool](#) (1)
[iOpener](#) (1)
[Suction Handle](#) (1)
[iFixit Opening Picks \(Set of 6\)](#) (1)
[Spudger](#) (1)
[Phillips #00 Screwdriver](#) (1)
[ESD Safe Blunt Nose Tweezers](#) (1)
[Plastic Cards](#) (1)



PARTS:

[Samsung Galaxy A50 Screen](#) (1)

Step 1 — Samsung Galaxy A50 SIM Tray Replacement



- Insert a SIM card eject tool, a SIM eject bit or a straightened paper clip **into the hole on the SIM tray** located at the left side of the phone.
 - Press firmly to eject the tray.
 - Remove the SIM card tray.
- ☑ When reinserting the cards, make sure to properly orient them in the tray.

Step 2 — Back Cover



- Start by switching off your phone.
 - Heat an [iOpener](#) and apply it to the back cover to soften the adhesive.
- ⓘ The adhesive of the Samsung Galaxy A50 is very strong. A hair dryer, heat gun, or hot plate may also be used if you aren't able to open the device with the iOpener. Be careful not to overheat the phone—the AMOLED display and internal battery are both susceptible to heat damage.

Step 3



- Insert an opening pick at the bottom of your phone near the USB-C port.
- ① If you can't get between the back cover and midframe with your opening pick, you can use a suction handle or [strong tape](#) to pull up the back cover to create a gap.
- Slide the opening pick to the bottom left corner.

Step 4



- Insert a second opening pick and slide it from the bottom to the top left corner to cut the adhesive.
- ① If you have trouble, apply more heat to further soften the adhesive. Follow the iOpener instructions to avoid overheating.
- Leave the opening picks in place to prevent the adhesive from resealing.

Step 5



- Insert a third opening pick under the top left corner of the back cover.
- Slide the opening pick along the top edge of the phone.
- Leave the opening pick in the top right corner to prevent the adhesive from resealing.

Step 6



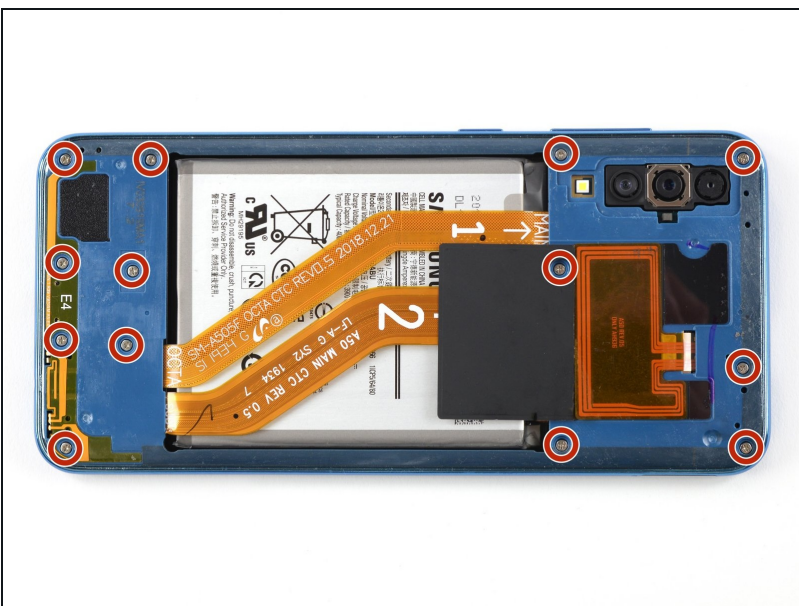
- Insert a fourth opening pick under the top right corner of the back cover.
- Slide the tip of the opening pick along the side of the phone to the bottom right corner to cut the adhesive.
- Leave the opening pick in the bottom right corner to prevent the adhesive from resealing.

Step 7



- Remove the back cover.
- ★ After installing the back cover, apply strong, steady pressure to your phone for several minutes to help the adhesive form a good bond—a stack of heavy books works well.

Step 8 — Midframe



- Remove the 13 Phillips #00 screws (4 mm length).

Step 9



- Insert an opening pick between the display and the midframe at the bottom of your phone above the USB-C port.
- Slide the pick along the bottom edge to release the clips.

Step 10



- Continue sliding the pick along the left edge of the phone to release the clips.

Step 11



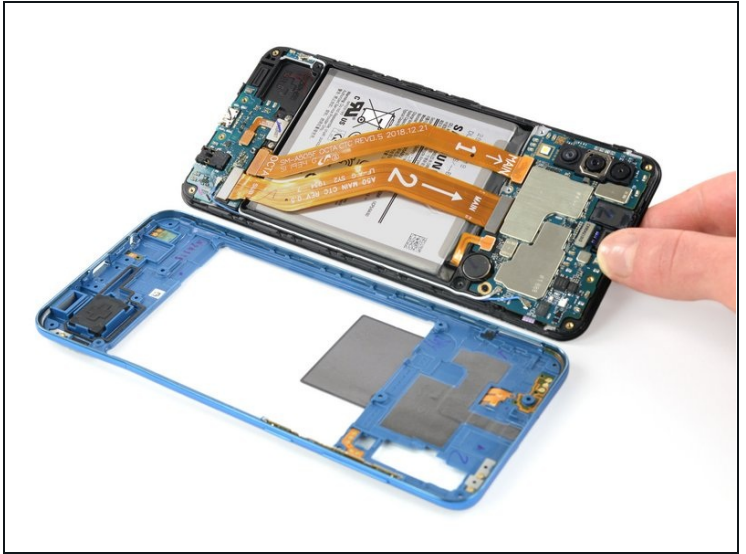
- Slide the opening pick along the top edge.

Step 12



- Slide your opening pick along the right edge towards the bottom right corner.

Step 13



① Make sure you free all the clips securing the midframe.

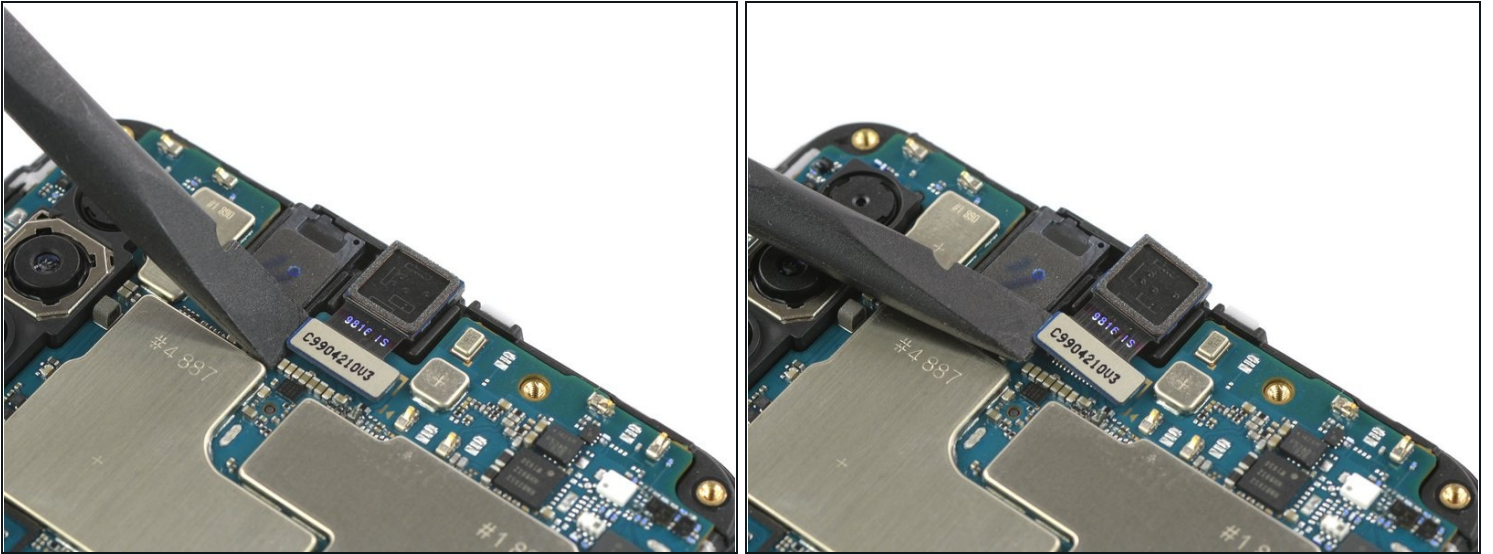
- Separate the midframe from the phone.

Step 14 — Battery Disconnect



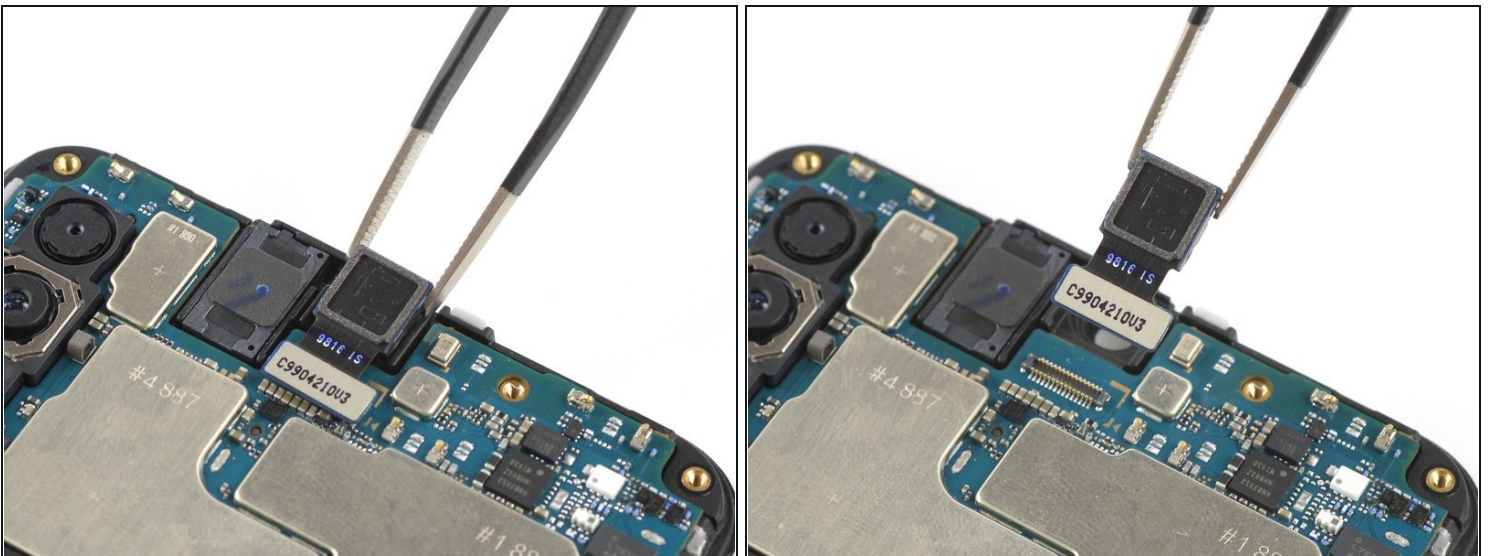
- Use a spudger to disconnect the battery by prying the connector straight up from its socket.

Step 15 — Front Camera



- Use a spudger to disconnect the front camera by prying the connector straight up from its socket.

Step 16



- Carefully remove the camera with a pair of [tweezers](#).

Step 17 — Screen



- Use the flat end of a spudger to pry up and disconnect the interconnect and display flex cable from the daughterboard.
- Carefully bend both cables out of the way.

Step 18



- Use the tip of a spudger to loosen the display connector above the daughterboard.

Step 19



- [Heat an iOpener](#) and apply it on the display for at least two minutes to soften the adhesive underneath.
- Place a suction handle close to the right edge of the display and pull with firm steady force for 30 seconds to loosen the adhesive.
- ① If the phone's screen is cracked, the suction handle may not stick. Try [lifting it with strong tape](#), or superglue the suction handle in place and allow it to cure so you can proceed.

Step 20



- Re-apply a heated iOpener to the display for about one minute.
- Pull the suction cup upwards and insert an opening pick into the gap between the display and the frame.
 - ⓘ Only insert the opening pick about 2 mm.

Step 21



- Slide the opening pick down to the bottom right corner.
- Leave it there to prevent the adhesive from resealing.

Step 22



- Insert a second opening pick and slide it to the top right corner of the phone to cut the adhesive.
- Leave the pick in its place to prevent the adhesive from resealing.

Step 23



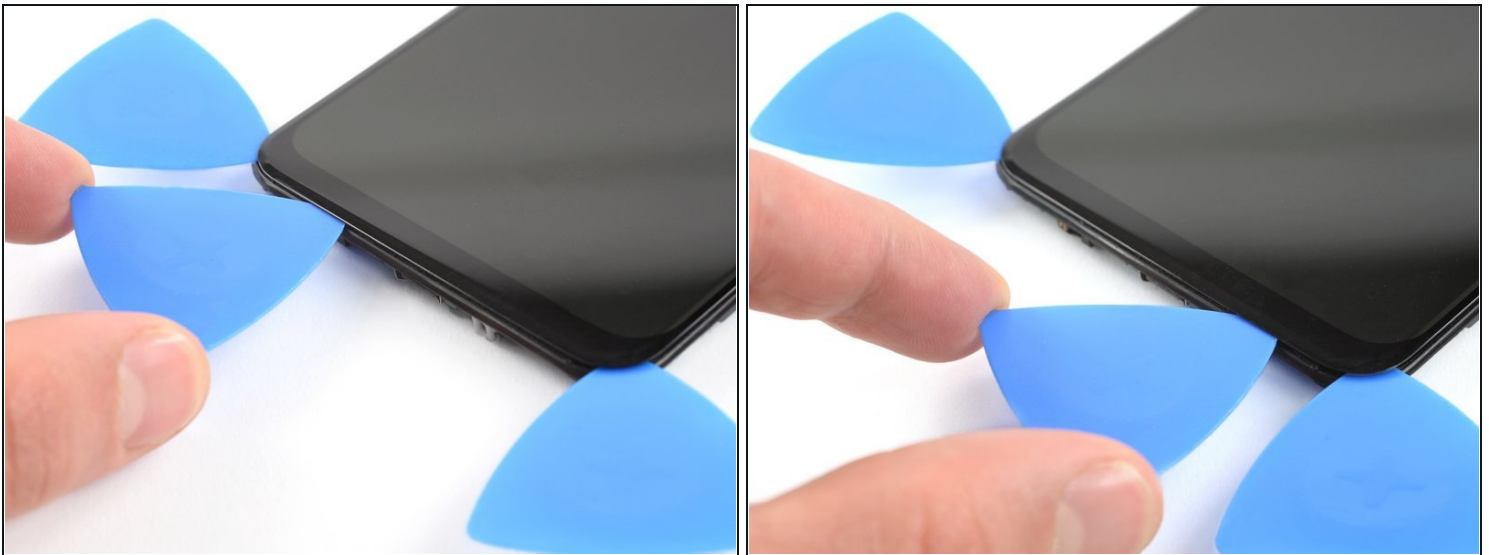
- Insert a third opening pick and slide it to the top left corner.
 - Leave the picks in their place to prevent the adhesive from resealing.
- ① If cutting becomes too difficult, [reheat](#) and reapply the iOpener.

Step 24



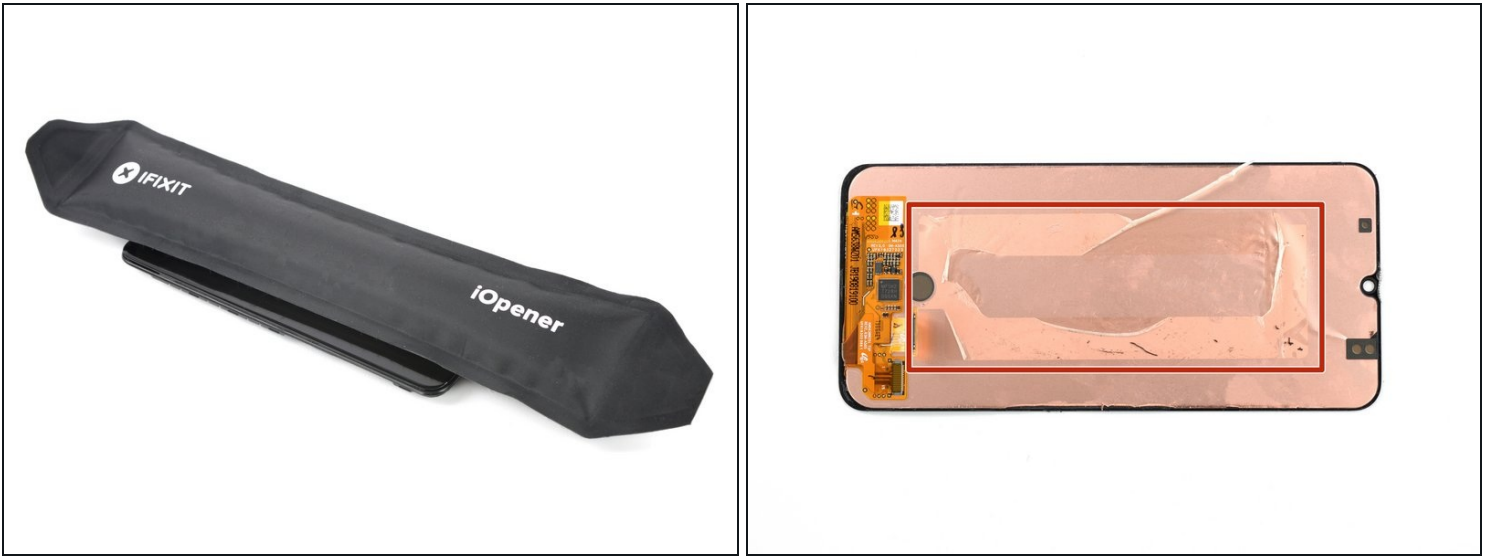
- Insert a fourth opening pick at the top left corner.
- Slide the opening pick up to the bottom left corner to cut the adhesive. Leave it there to prevent the adhesive from resealing.

Step 25



- Insert a fifth opening pick and slide it along the bottom edge of the phone to cut the remaining adhesive.
- ⓘ Only insert the opening pick about 2 mm to avoid damaging components.

Step 26



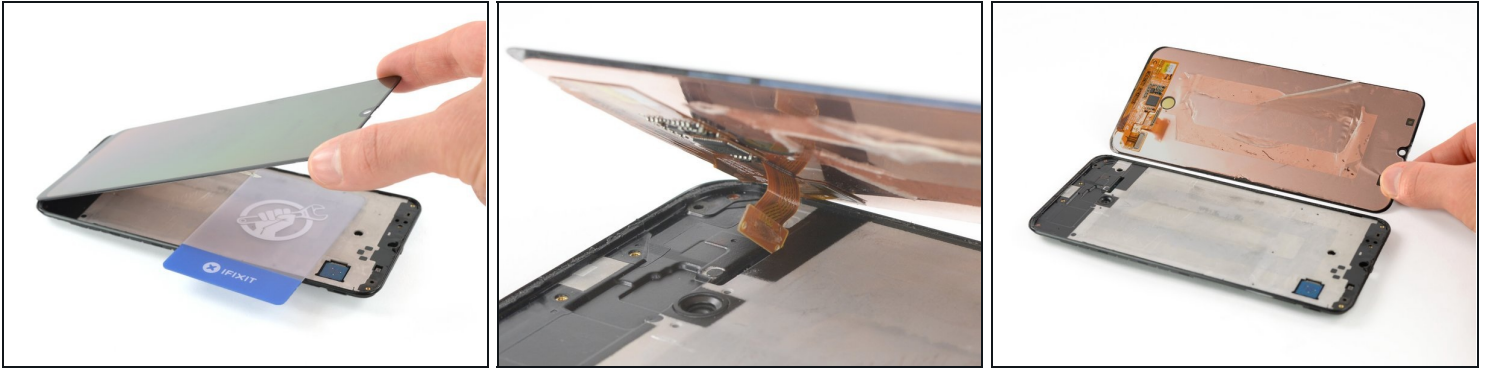
- Apply a heated iOpener to the display to loosen the adhesive underneath the screen.
- As you wait, take note of the rectangular-shaped adhesive placed on the back of the screen.

Step 27



- Insert a [plastic card](#) into the loosened left edge of the phone.
- Press the plastic card in and slide it back and forth until you cut through the entire adhesive.
- Once you are sure you cut through the adhesive, remove the four opening picks from the corners.

Step 28



- Lift the screen from the top edge of the phone.
- Carefully thread the display cable through the frame.
- Remove the screen.

If possible, turn on your device and test your repair before installing new adhesive and resealing.

The best way to secure the new screen is to apply a sheet of custom-cut double-sided tape to the back of the screen.

To reassemble your device, follow these instructions in reverse order. Apply new adhesive where necessary after cleaning the relevant areas with isopropyl alcohol (>90%).

Take your e-waste to an [R2 or e-Stewards certified recycler](#).

Repair didn't go as planned? Try some [basic troubleshooting](#), or ask our [Answers community](#) for help.