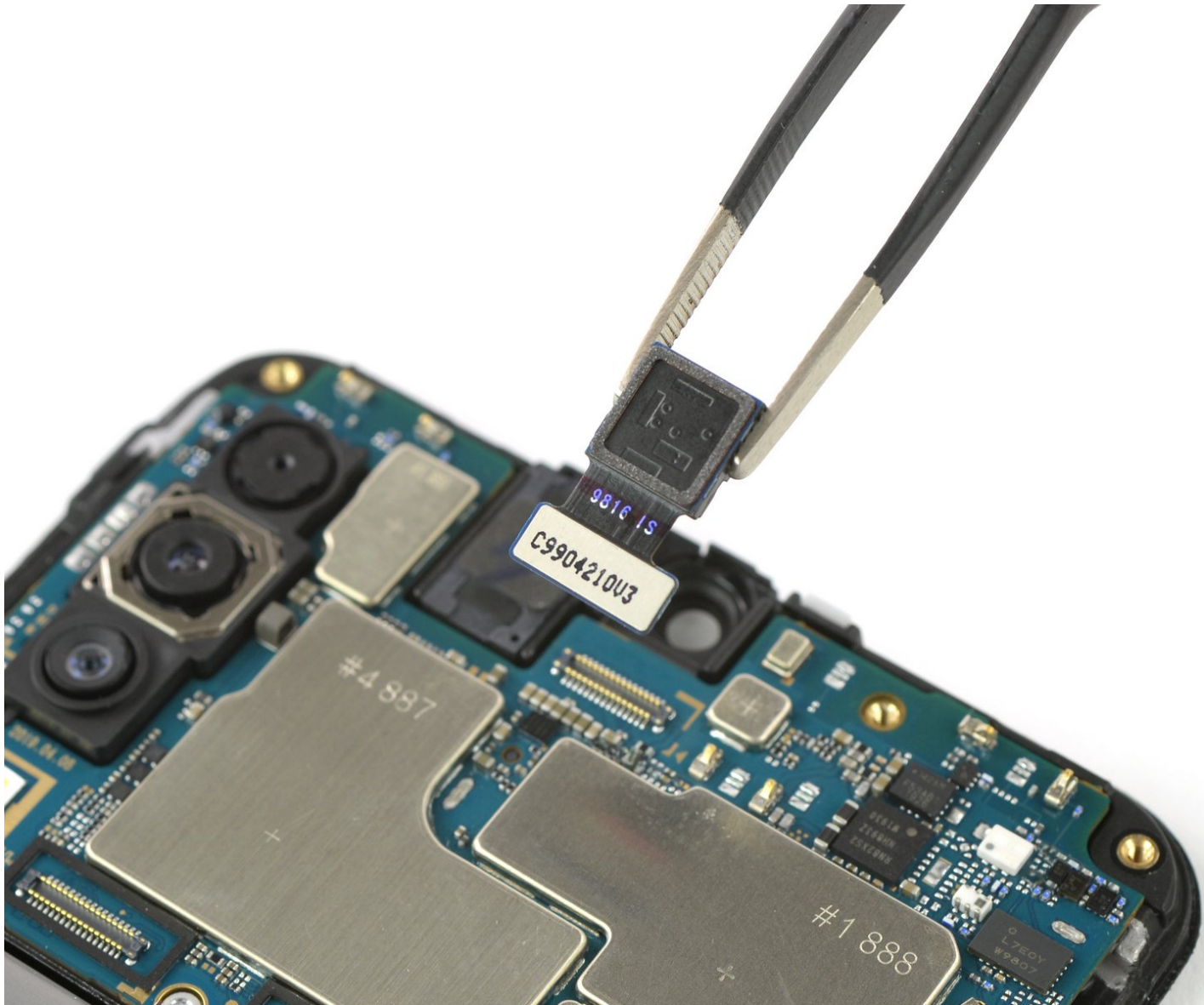




Samsung Galaxy A50 Front Camera Replacement

How to replace the front camera of your Samsung Galaxy A50.

Written By: Adriana Zwink



INTRODUCTION

Use this guide to replace the front camera of your Samsung Galaxy A50.

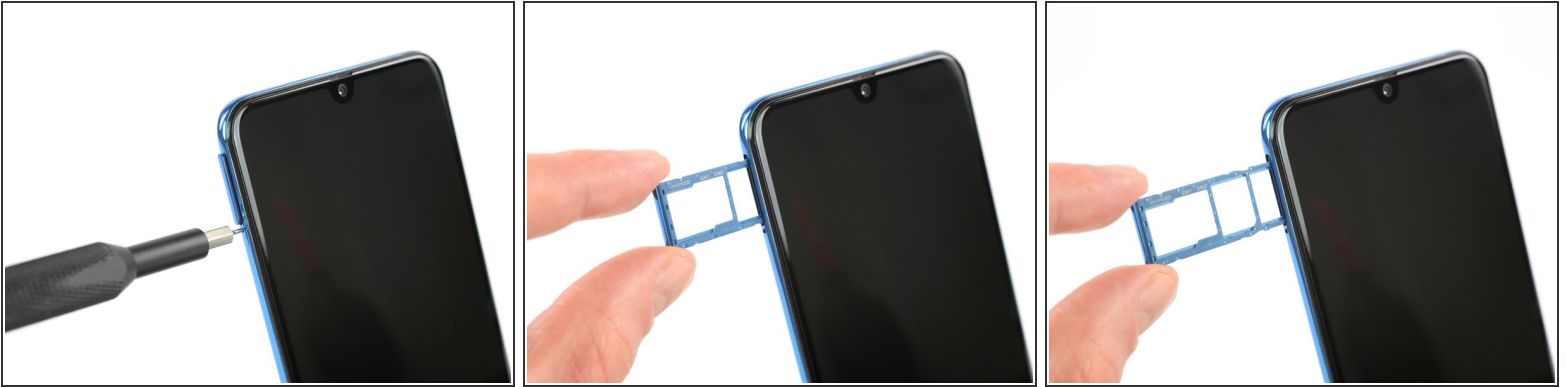
You'll need replacement adhesive to reattach components when reassembling the device.



TOOLS:

- [SIM Card Eject Tool](#) (1)
 - [iOpener](#) (1)
 - [Suction Handle](#) (1)
 - [iFixit Opening Picks set of 6](#) (1)
 - [Phillips #00 Screwdriver](#) (1)
 - [Spudger](#) (1)
 - [ESD Safe Tweezers Blunt Nose](#) (1)
-

Step 1 — Samsung Galaxy A50 SIM Tray Replacement



- Insert a SIM card eject tool, a SIM eject bit or a straightened paper clip **into the hole on the SIM tray** located at the left side of the phone.
 - Press firmly to eject the tray.
 - Remove the SIM card tray.
- ✦ When reinserting the cards, make sure to properly orient them in the tray.

Step 2 — Back Cover



- Start by switching off your phone.
 - Heat an [iOpener](#) and apply it to the back cover to soften the adhesive.
- ⓘ The adhesive of the Samsung Galaxy A50 is very strong. A hair dryer, heat gun, or hot plate may also be used if you aren't able to open the device with the iOpener. Be careful not to overheat the phone—the AMOLED display and internal battery are both susceptible to heat damage.

Step 3



- Insert an opening pick at the bottom of your phone near the USB-C port.
- ⓘ If you can't get between the back cover and midframe with your opening pick, you can use a suction handle or [strong tape](#) to pull up the back cover to create a gap.
- Slide the opening pick to the bottom left corner.

Step 4



- Insert a second opening pick and slide it from the bottom to the top left corner to cut the adhesive.
- ⓘ If you have trouble, apply more heat to further soften the adhesive. Follow the iOpener instructions to avoid overheating.
- Leave the opening picks in place to prevent the adhesive from resealing.

Step 5



- Insert a third opening pick under the top left corner of the back cover.
- Slide the opening pick along the top edge of the phone.
- Leave the opening pick in the top right corner to prevent the adhesive from resealing.

Step 6



- Insert a fourth opening pick under the top right corner of the back cover.
- Slide the tip of the opening pick along the side of the phone to the bottom right corner to cut the adhesive.
- Leave the opening pick in the bottom right corner to prevent the adhesive from resealing.

Step 7



- Remove the back cover.
- ☑ After installing the back cover, apply strong, steady pressure to your phone for several minutes to help the adhesive form a good bond—a stack of heavy books works well.

Step 8 — Midframe



- Remove the 13 Phillips #00 screws (4 mm length).

Step 9



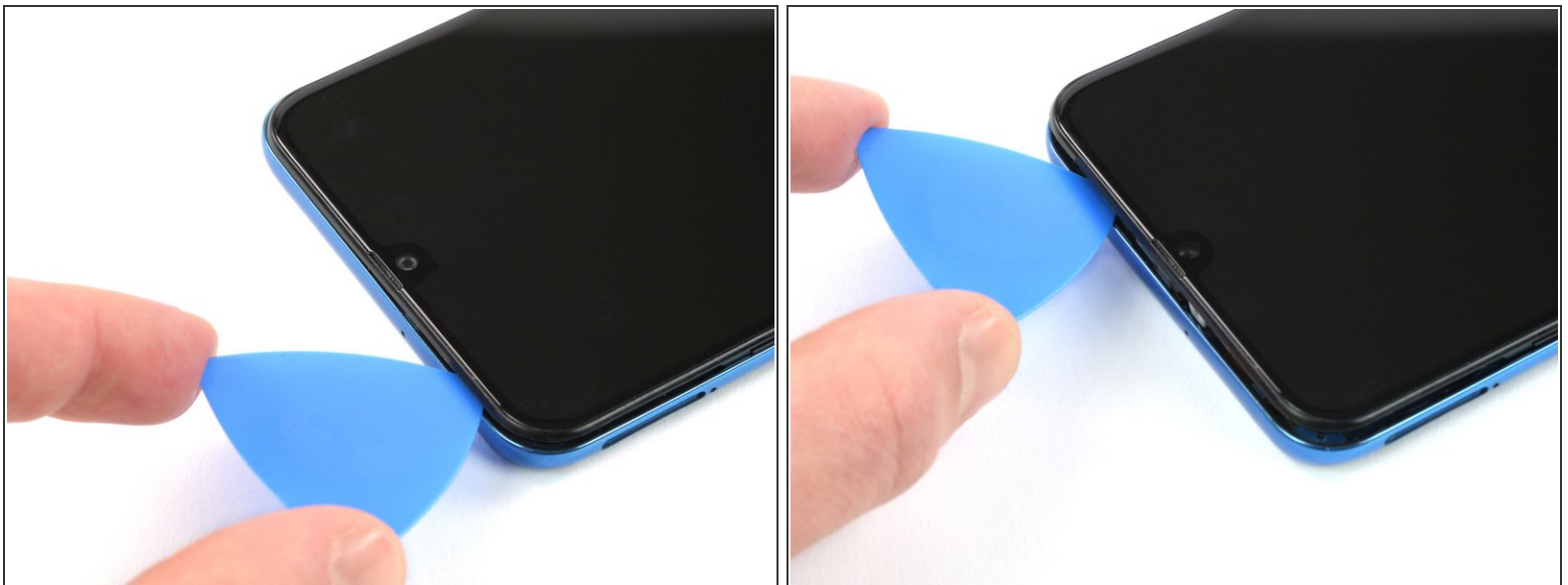
- Insert an opening pick between the display and the midframe at the bottom of your phone above the USB-C port.
- Slide the pick along the bottom edge to release the clips.

Step 10



- Continue sliding the pick along the left edge of the phone to release the clips.

Step 11



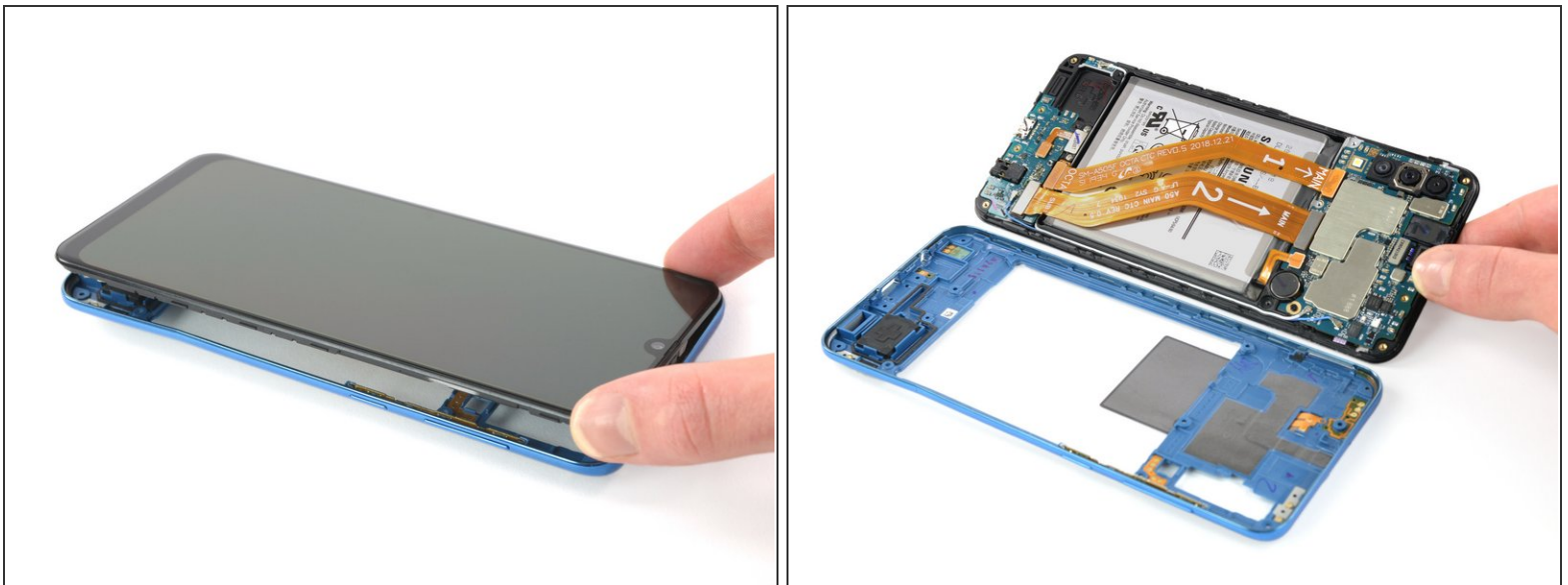
- Slide the opening pick along the top edge.


Step 12



- Slide your opening pick along the right edge towards the bottom right corner.

Step 13



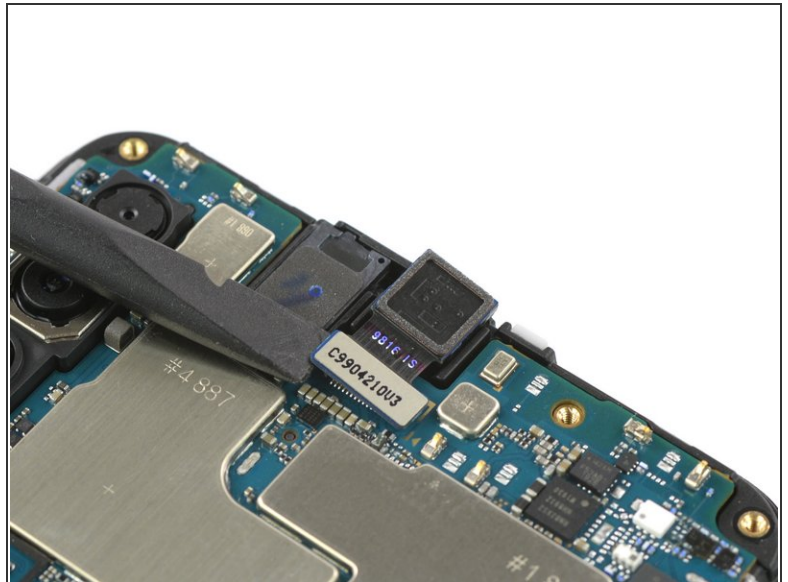
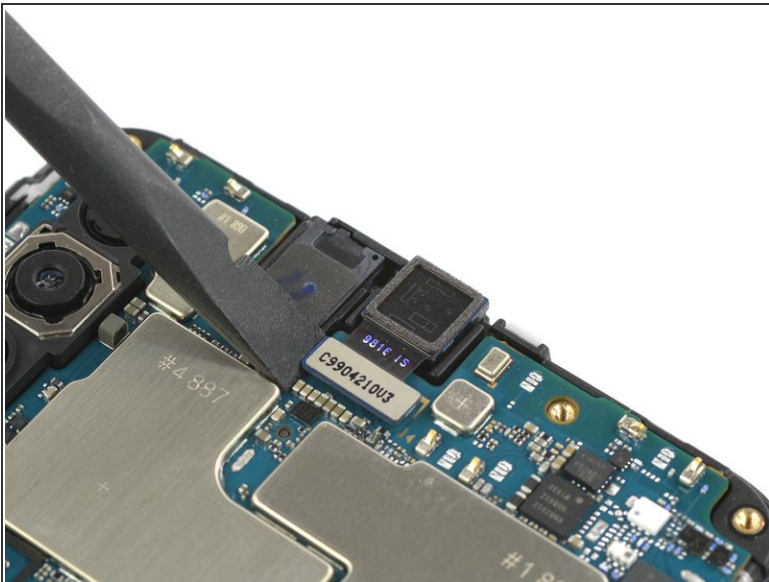
-  Make sure you free all the clips securing the midframe.
- Separate the midframe from the phone.

Step 14 — Battery Disconnect



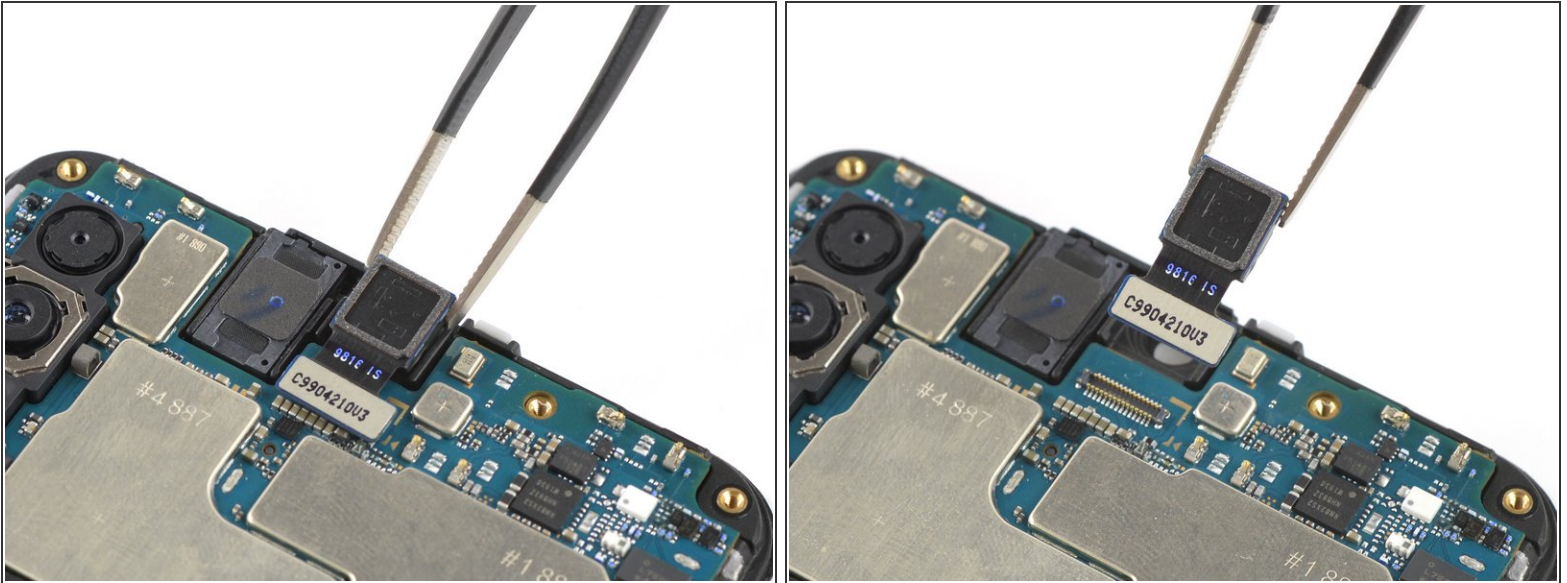
- Use a spudger to disconnect the battery by prying the connector straight up from its socket.

Step 15 — Front Camera



- Use a spudger to disconnect the front camera by prying the connector straight up from its socket.

Step 16



- Carefully remove the camera with a pair of tweezers.

If possible, turn on your device and test your repair before installing new adhesive and resealing.

To reassemble your device, follow these instructions in reverse order. Apply new adhesive where necessary after cleaning the relevant areas with isopropyl alcohol (>90%).

Take your e-waste to an [R2 or e-Stewards certified recycler](#).

Repair didn't go as planned? Try some [basic troubleshooting](#), or ask our [Answers community](#) for help.