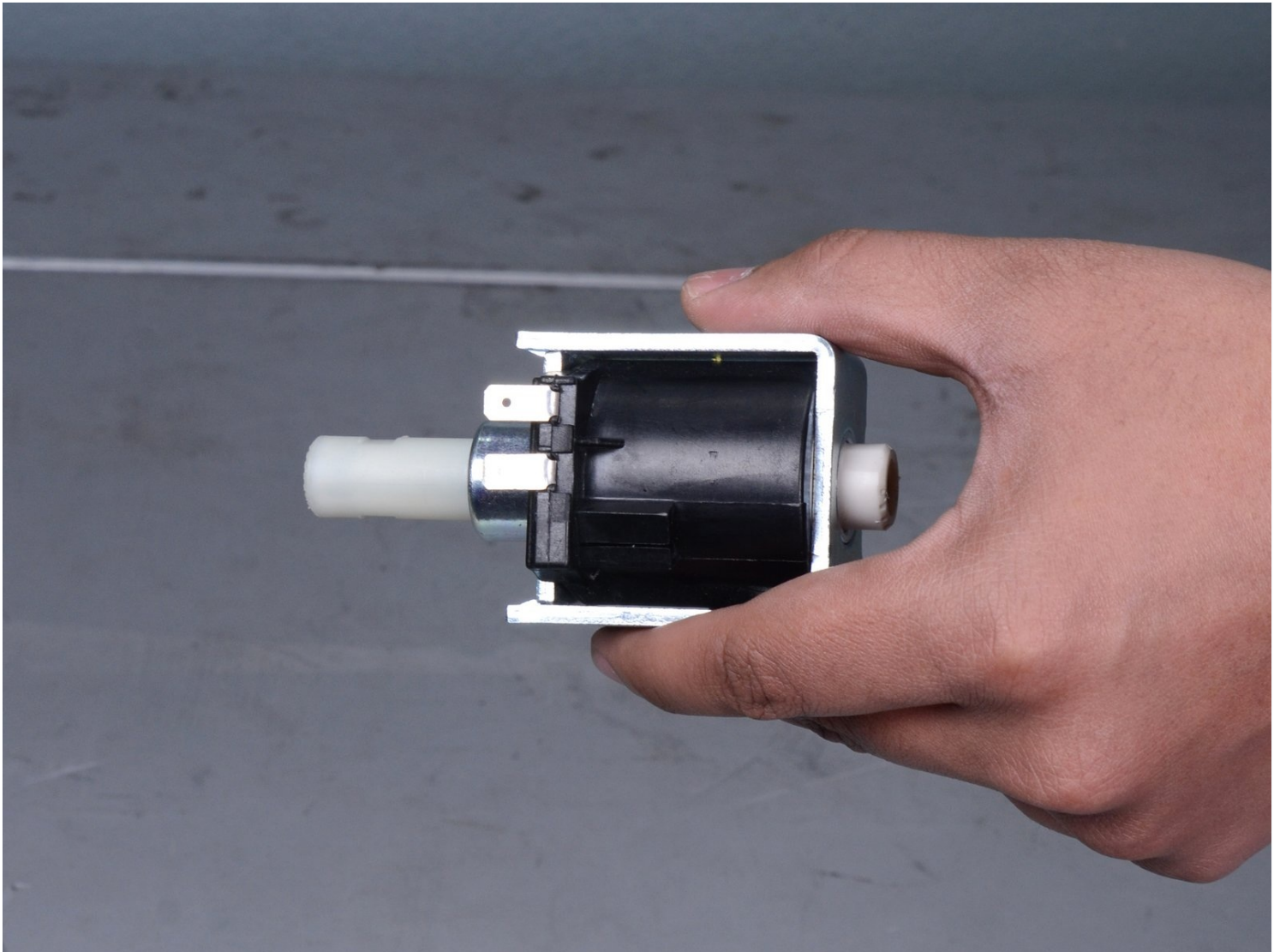




# Presto Carpet Extractor 9.840-068.0 2016 Pump Replacement

Follow this guide to remove or replace the pump...

Written By: Tarun Thiruma



# INTRODUCTION

Follow this guide to remove or replace the pump on your Presto Carpet Extractor 9.840-068.0 (2016).

Be sure to thoroughly clean and dry your extractor before you begin.

---

## TOOLS:

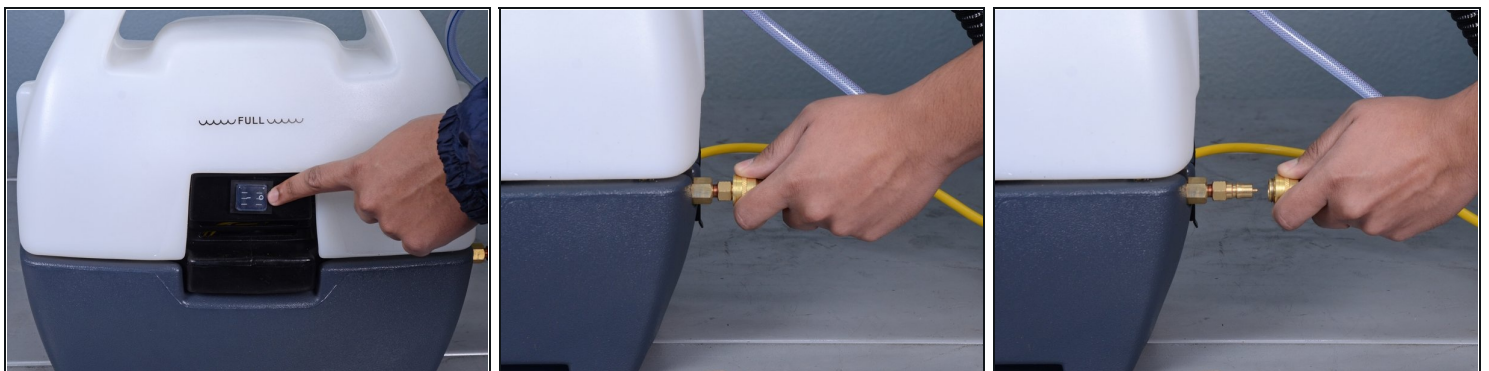
Phillips #2 Screwdriver (1)  
6-in-1 Screwdriver (1)  
Slip Joint Pliers (1)

## PARTS:

Steel Hose Clamp 1 1/4" (1)  
Teflon tape (1)  
Presto Pump, 110/120 60Hz Flojet 8.620-111.0 (1)

---

### Step 1 — Disconnect the Hose



 Ensure your carpet extractor is unplugged and switched off before starting this procedure.

- If it is still attached, pull and disconnect the brass quick-connect fitting from the carpet extractor body.

## Step 2



- If it is still attached, disconnect the black hose from the recovery tank.

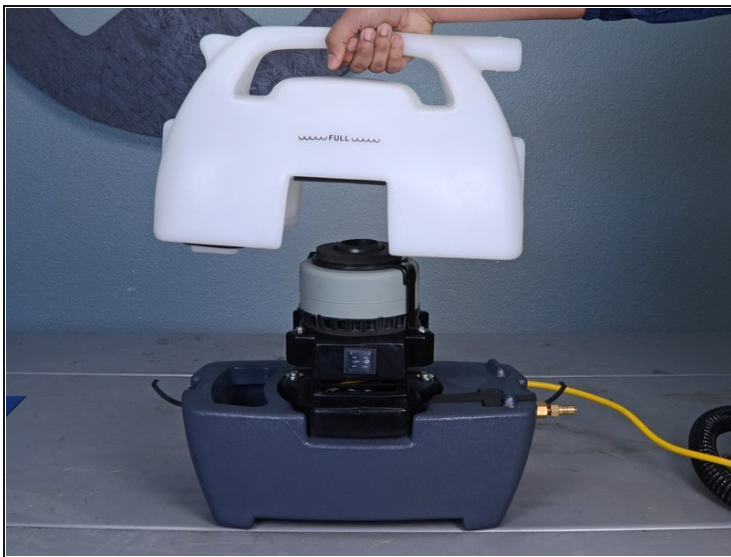
## Step 3 — Remove the Recovery Tank



- Unclasp and release the two black latches on either side of the carpet extractor.



## Step 4



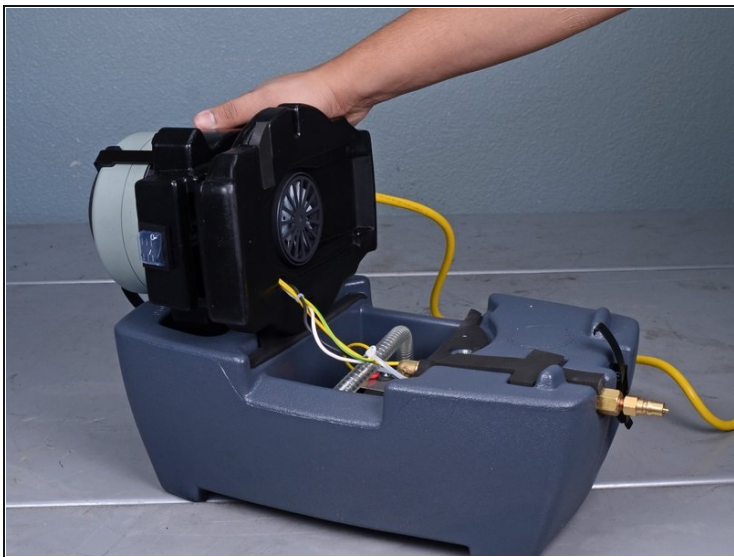
- Remove the recovery tank.

## Step 5 — Unscrew the Pump Housing



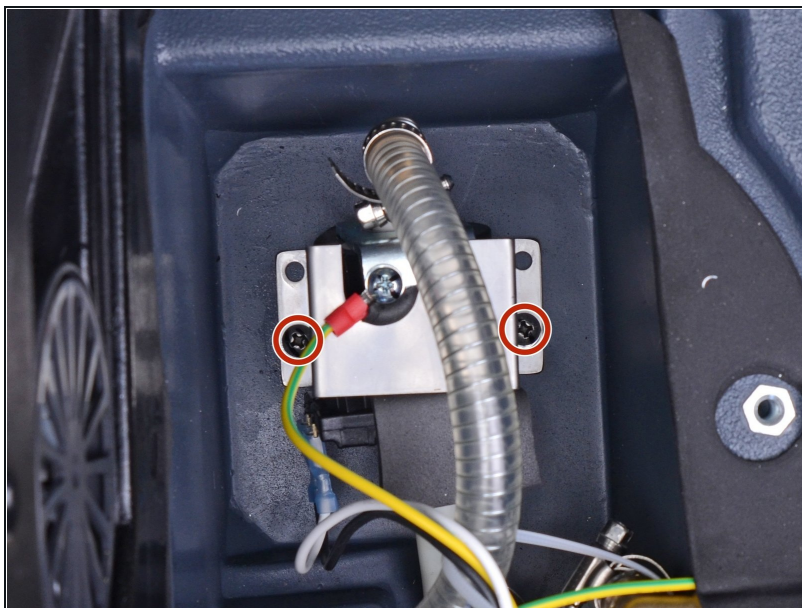
- Use a Phillips #3 screwdriver to remove the two 1-1/2" screws and washers securing the pump housing.

## Step 6 — Open the Pump Housing



- Tilt the vacuum motor and pump housing sideways and let it rest on the side of the extractor.

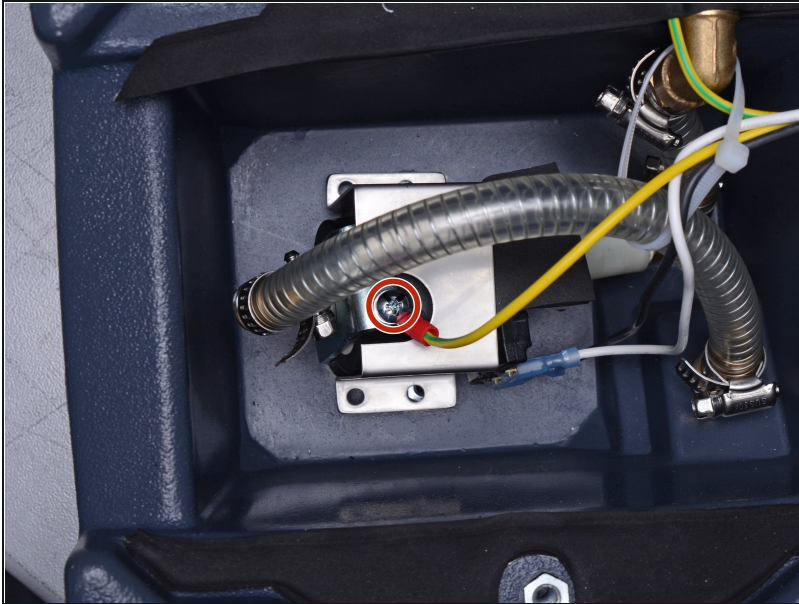
## Step 7 — Disconnect the Pump



- Use a Phillips #2 screwdriver to remove the two 1/2" screws and star washers securing the pump mounting bracket.

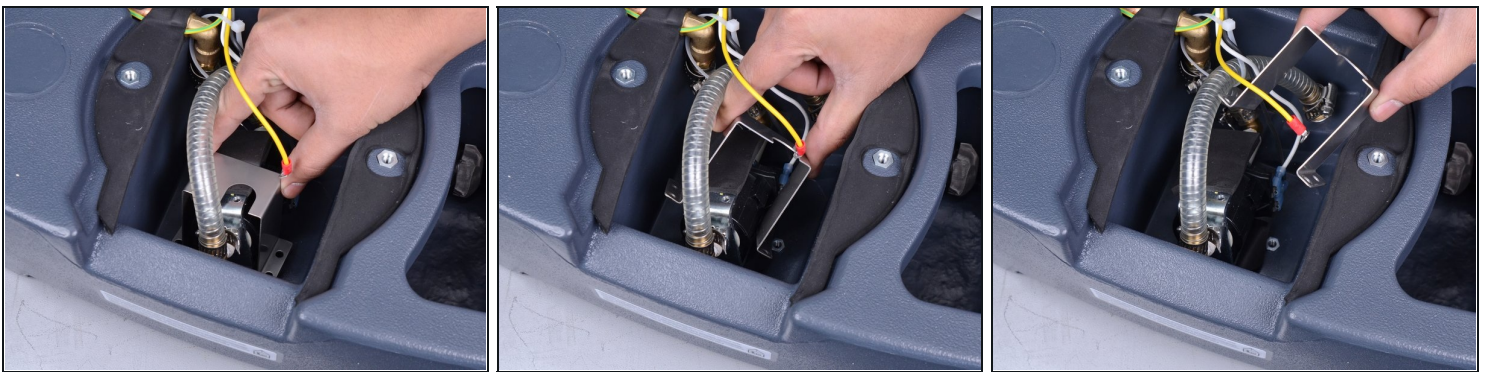


## Step 8



- Use a Phillips #2 screwdriver to remove the ground terminal screw and star washer from the pump.

## Step 9 — Remove the Pump Mounting Bracket



- Lift and remove the pump mounting bracket.
  - ① Take care to not snag the sharp edges of the mounting bracket on any wires or hoses as you remove it.

## Step 10



- Use a flathead screwdriver to loosen the hose clamp on back side of the pump.
- ☑ We strongly suggest you replace this hose clamp during reassembly to prevent leaks during operation.

## Step 11



- Slide the loosened hose clamp back until it is no longer around the brass fitting.



## Step 12



- Pull the hose straight off of the brass fitting to remove it from the pump.
  - ① If this is too difficult to do by hand, use a pair of pliers to carefully work the hose off of the fitting until it is free.

## Step 13



- Disconnect the two crimp connectors from the pump body.
  - ☑ Take note of [which wire connects where](#) for reassembly.
  - ① This may require a significant amount of force; pull and wiggle the connector until it's free.



## Step 14 — Remove the Pump



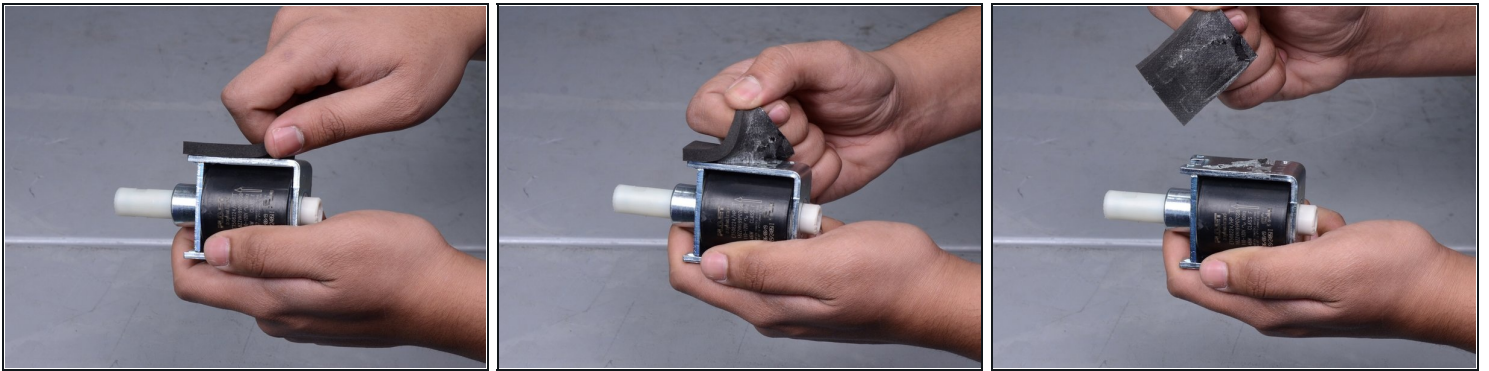
- Twist the pump body counterclockwise until it is disconnected from the fitting at the other end of pump.
- Remove the pump from the extractor.
- ☑ Before installing the new pump during reassembly, replace the teflon tape on the brass fitting to prevent leaks during operation.

## Step 15 — Remove the Remaining Components from the Pump



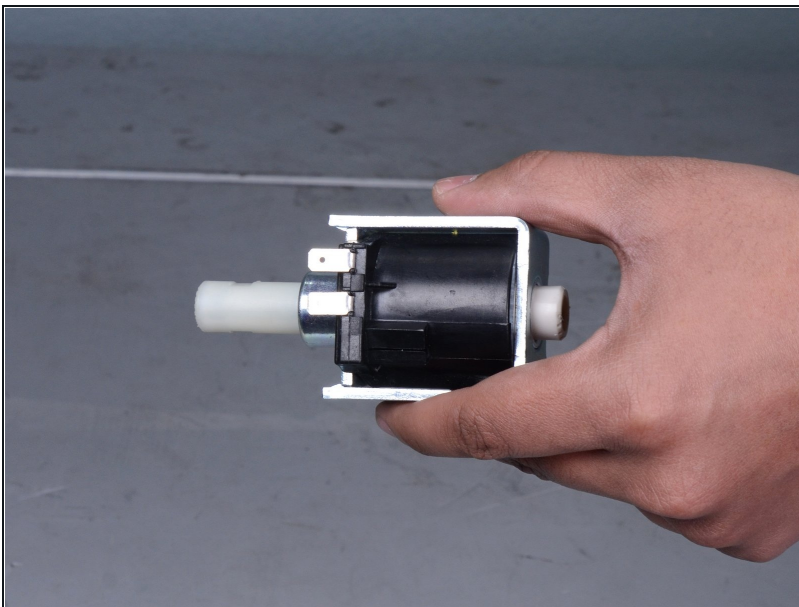
- Use a pair of pliers to unscrew and remove the remaining brass fitting from the pump.
- ☑ Replace the teflon tape on this brass fitting before installing it into the new pump to prevent leaks during operation.

## Step 16



- Carefully remove the foam pad adhered to the top of the pump body.
  - ① Keep this foam pad intact so it can be reused on the new pump during reassembly. Apply the pad to the same location on the new pump.

## Step 17



- Only the pump remains.

---

To reassemble your device, follow these instructions in reverse order.