



# Toshiba Satellite U405D-S2902 Display Replacement

Written By: Brandon Kirklen



---

## TOOLS:

[Tweezers](#) (1)

[Phillips #1 Screwdriver](#) (1)

---

### Step 1 — Display



- Use [tweezers](#) to remove the small rubber covers over the screws on the top and bottom of the laptop case.

### Step 2



- Use a #1 Phillips screwdriver to remove the 3mm screws located on both sides of the top of the laptop as well as the lower corners.

### Step 3



- Use a plastic opening tool to separate the front plastic panel from the back side of the top of the laptop.
- Carefully pull the top away from the back.

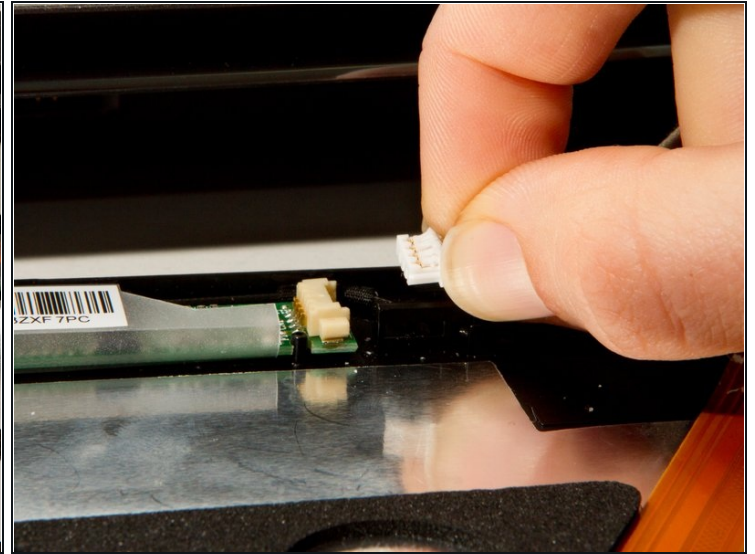
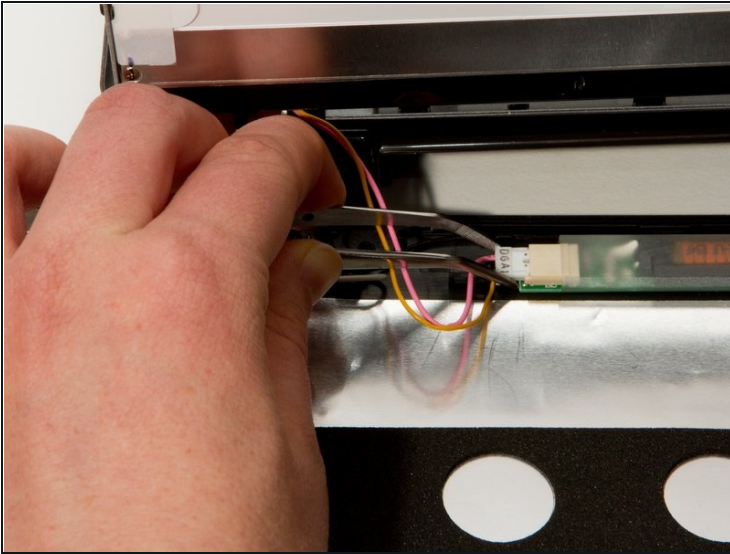
### Step 4



- Turn the laptop around.
- Remove the webcam/microphone data cable.

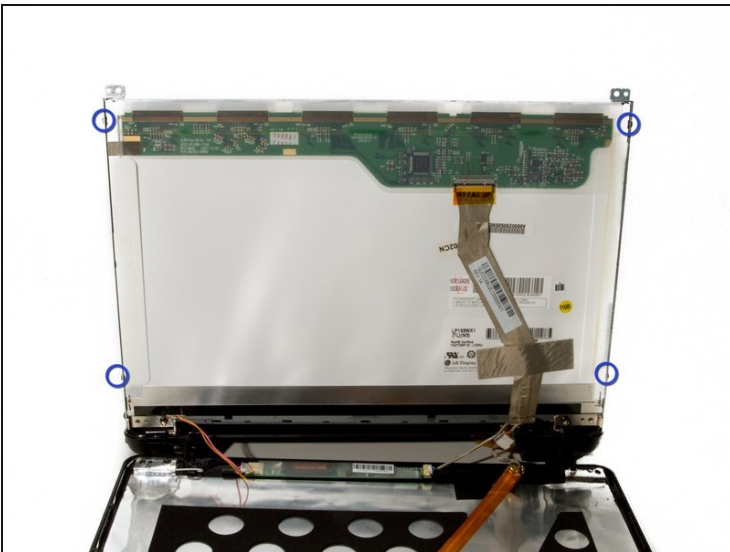


## Step 5



- Remove the lower lighting power supply.
- Remove the signal light power supply and data cable.

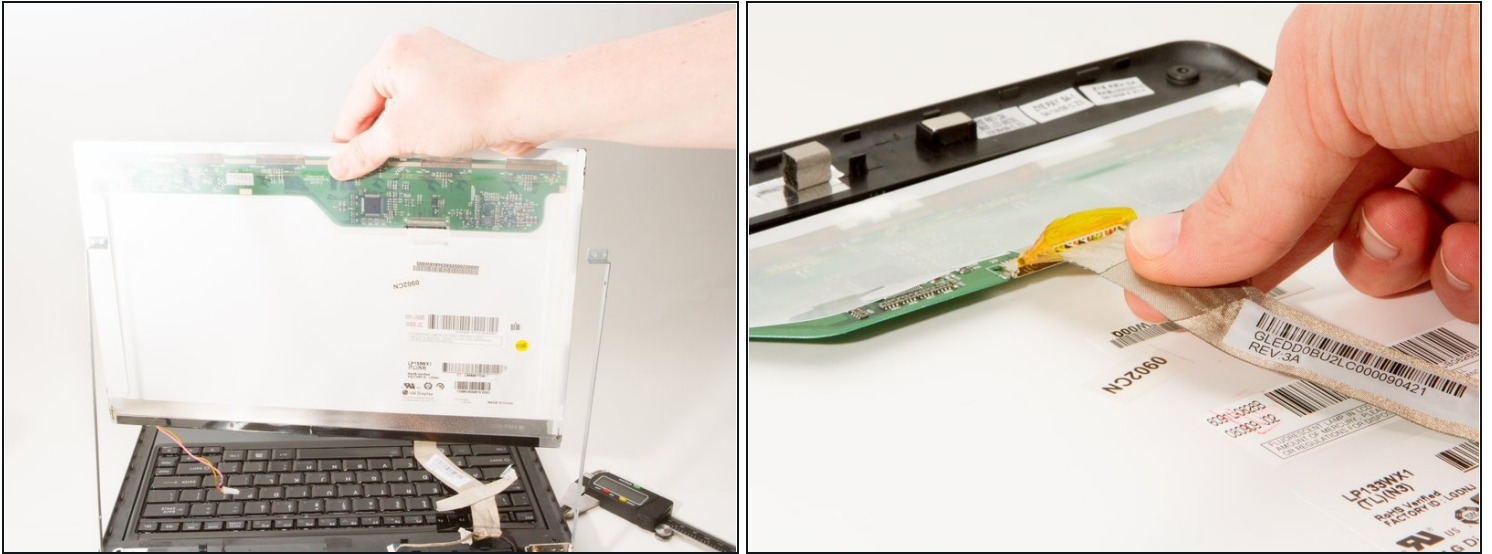
## Step 6



- Locate and remove the four 2mm #1 Phillips screws around the sidewalls of the display.

⚠ After removing the last screw, the screen will be very loose, be sure to keep a hand on it to prevent it from damaging the keyboard.

## Step 7



- Carefully remove the screen from the side brackets.
- Remove the LCD ribbon connector from the display.

---

To reassemble your device, follow these instructions in reverse order.