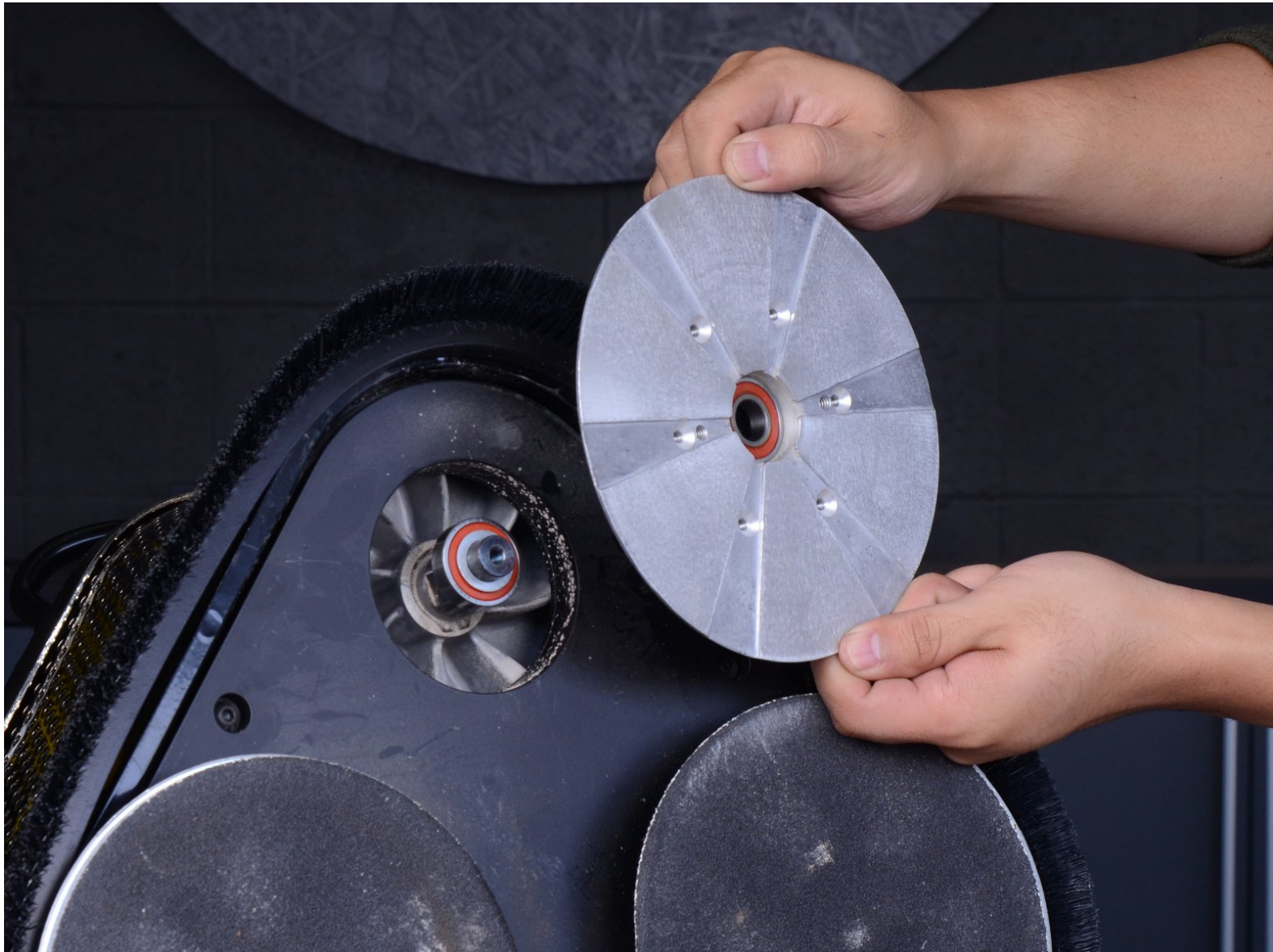




American Sanders EZSand Orbital Sander 07163A 2012 Sanding Disc Replacement

Replace a worn-out or damaged sanding disc on your Clarke orbital floor sander.

Written By: Miles Robinson



INTRODUCTION

Use this guide to remove and replace a sanding disc on the Clarke Floor Sander 07163A.

This guide shows the removal of just one disc, but the procedure for the other two discs is the same.



TOOLS:

- [3mm Hex Key](#) (1)
- [Flathead Screwdriver](#) (1)
- [11 mm Socket](#) (1)
- [Socket Wrench](#) (1)
- [22 mm Thin Wrench](#) (1)
- [Pry Bar](#) (1)
- [15/16" Socket](#) (1)
- [Snap Ring Pliers](#) (1)



PARTS:

- [Clarke Pad Foam Driver 11139A](#) (1)
- [Clarke DISC SANDING 38734A](#) (1)

Step 1 — Remove the sandpaper disc



- ⚠ Before you begin, be sure that the sander is unplugged and powered off.
- Carefully tilt the sander back and lay it down on its side, exposing the three sanding pads on the bottom.

Step 2



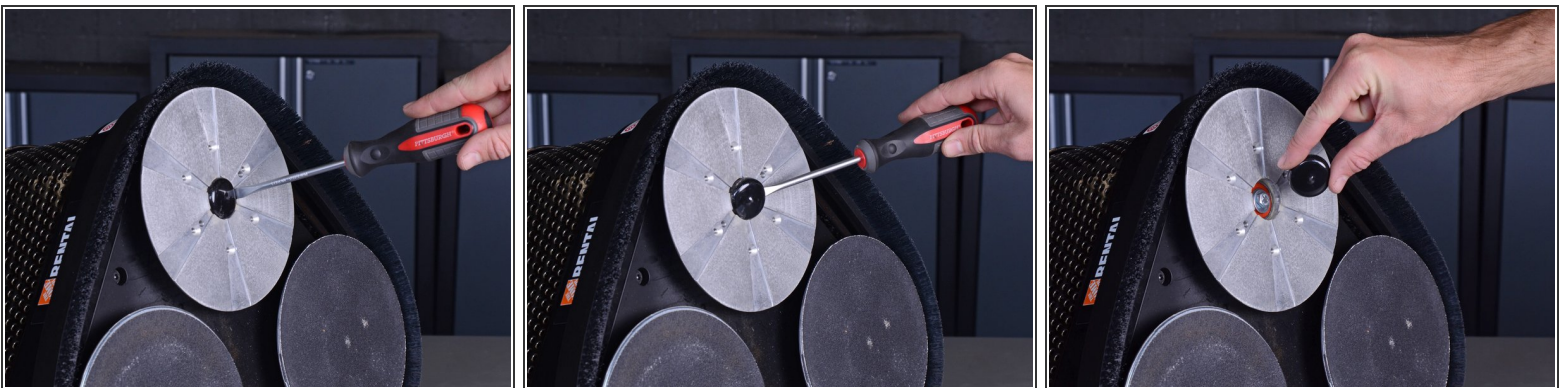
- Peel the hook-and-loop sandpaper disc off of the driver assembly.

Step 3 — Remove the driver pad



- Use a 3 mm hex key or driver bit to remove the six 11.9 mm-long screws securing the driver pad.
- Remove the driver pad from the sanding disc.

Step 4 — Remove the sanding disc



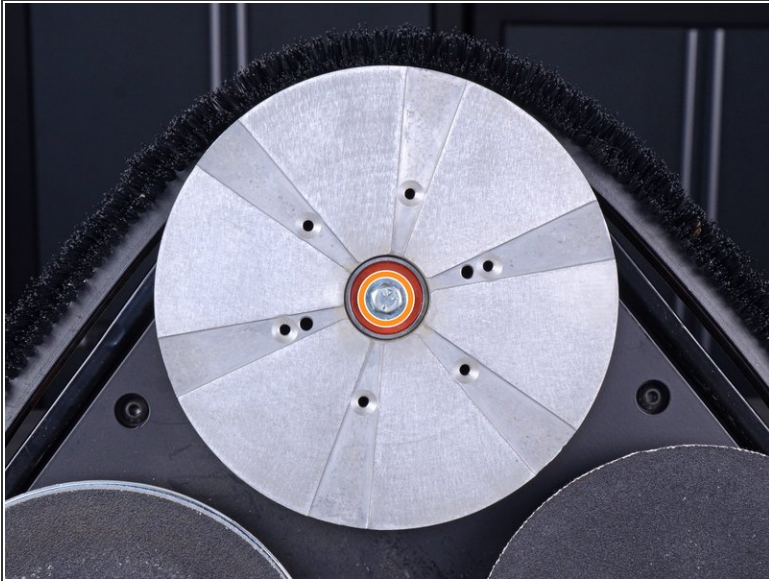
- Use a flathead screwdriver to pry off and remove the rubber plug in the center of the sanding disc.

Step 5



- Slide a thin 22 mm wrench underneath the sanding disc and clasp it onto the flat part of the motor driveshaft to keep the driveshaft from turning.

Step 6



- Use an 11 mm socket and socket wrench to remove the 16.5 mm-long bolt securing the sanding disc to the motor driveshaft.
- Apply counter torque to the driveshaft wrench as you loosen the bolt to keep the sanding disc from spinning.

Step 7



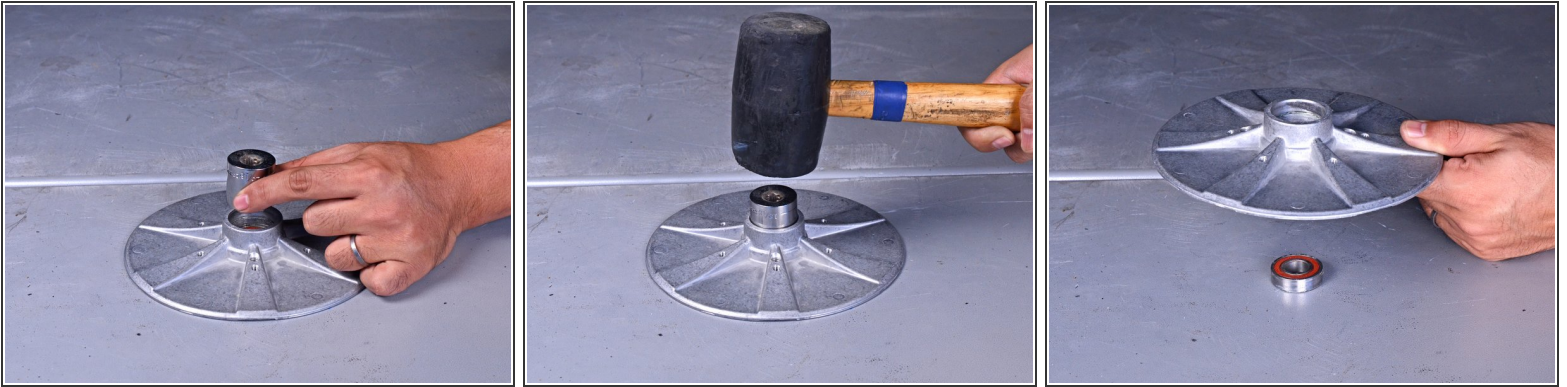
- Take two pry bars and insert them underneath the sanding disc as close to the driveshaft as possible.
- Apply pressure to the pry bars in opposite directions to carefully pry the sanding disc off of the driveshaft.
- Remove the sanding disc from the floor sander.

Step 8 — Remove the sanding disc bearing



- Use a pair of snap ring pliers to compress the retaining ring inside the driver and remove it from the sanding disc.
- ❗ It may help to use a small flathead screwdriver to pry out the retaining ring as you remove it.

Step 9



- Place a 15/16" socket inside the center of the sanding disc and use a mallet to tap the bearing out of the disc.

To reassemble your device, follow these instructions in reverse order.