



Toilet Keeps Running: How to Fix & Maintain Valve Seat

When calcium deposits have built up on the valve seat, the toilet continues running and cannot be flushed.

Written By: Roman Snow



INTRODUCTION

Is your toilet seat always running, even when nobody has flushed it for hours? Or is your toilet incapable of flushing completely? When calcium deposits have built up on the valve seat, the toilet continues running and cannot be flushed. This guide will help you remove those calcium deposits.

TOOLS:

- [Shop Towels or Rags](#) (1)
-

Step 1 — Toilet Keeps Running: How to Fix & Maintain Valve Seat



- Remove the lid from the toilet tank.

Step 2



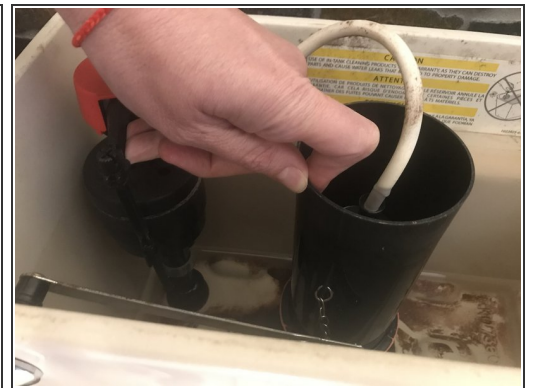
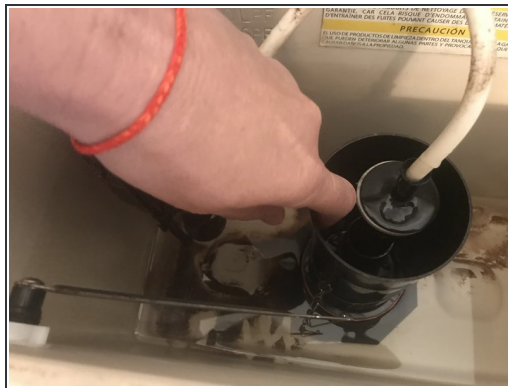
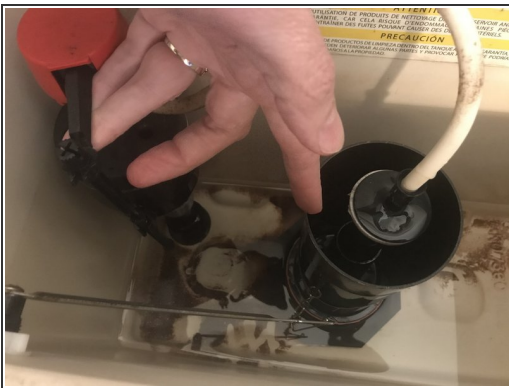
- Flush the toilet, and hold down the flush lever until the tank is completely empty.


Step 3



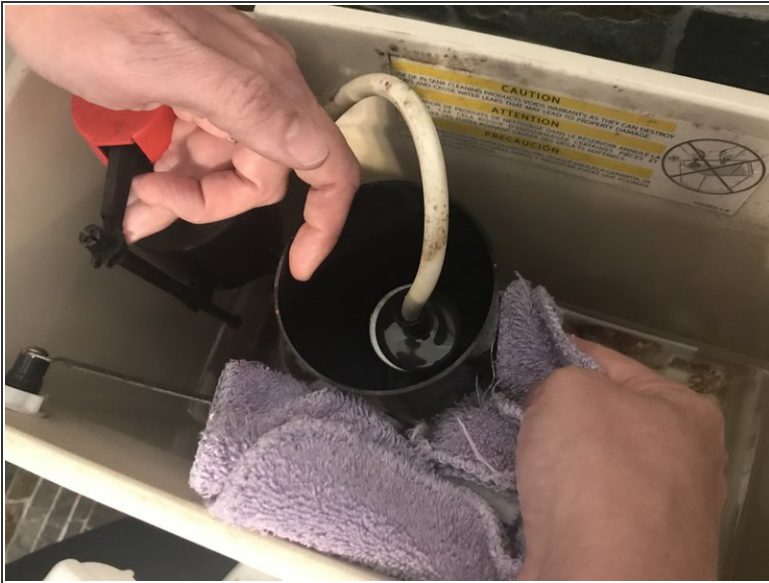
- Gently lift the float up, ending the flow of water. This will prevent the toilet tank from refilling.

Step 4



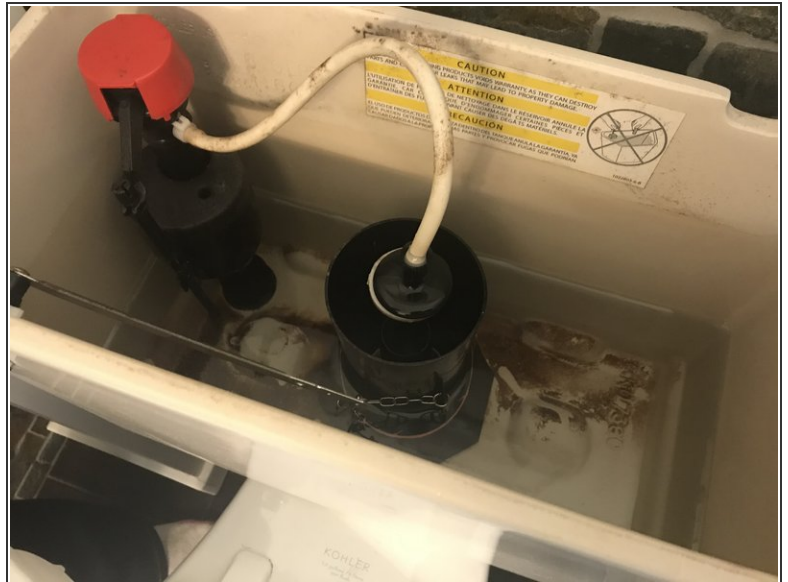
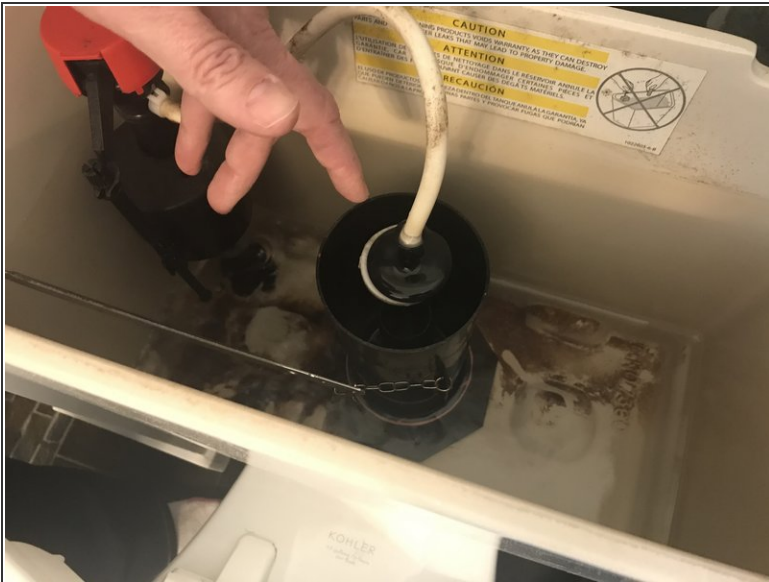
- Pull up the valve seat. If possible, keep it raised without releasing the float.
 - If you do not have assistance, you may need to hold these in place with one hand. This will keep your other hand free for the next step.
-  Some toilets may use a float ball to control overflow.

Step 5



- Wipe the valve seat with a rag or towel to remove the calcium deposits. Don't forget to wipe the bottom of the valve seat, as deposits can form there as well.

Step 6



- Release the float and the valve seat, and allow them to fall back into place. The flow of water will resume.

Step 7



- Place the lid back on the tank.