



# Toilet Flange Replacement

How to replace a toilet flange.

Written By: Syeed Hamid



## INTRODUCTION

Quickly replace/repair a toilet flange with a replacement kit from a hardware store, following these steps. This should not take more than 20 minutes, although it is highly recommended you do this with a partner as there is a bit of fine adjustment and heavy (60-120lbs) lifting involved. For this, I will be using the **Jag Plumbing Products** Toilet Bowl Anchor Flange Kit from Home Depot, but similar kits from elsewhere may be substituted as well, provided they have a flange and bolts.

Ensure the area where you will be working is well lit and dry. Check the toilet itself to see if there are any cracks in the porcelain. If there are any, you will need a new toilet unfortunately.



### TOOLS:

- [Monkey Wrench](#) (1)
- [Flashlight](#) (1)
- [Bottlenose Pliers](#) (1)
- [Work Gloves](#) (1)
- [Towel](#) (1)



### PARTS:

- <https://www.homedepot.com/p/NEXT-by-Danco-HydroSeat-Toilet-Flange-Repair-10672X/204403879> (1)
- <https://www.homedepot.ca/product/jag-plumbing-products-toilet-bowl-anchor-flange-kit/1000777667> (1)

## Step 1 — Flange



- Spread a towel a bit behind you or beside if you have enough space, as this is where you will be placing the toilet.

## Step 2



- Turn off the water line using the valve.
- Disconnect the toilet water line from the back of the toilet (this looks like a hose).
- Flush the toilet a few times to drain the tank.

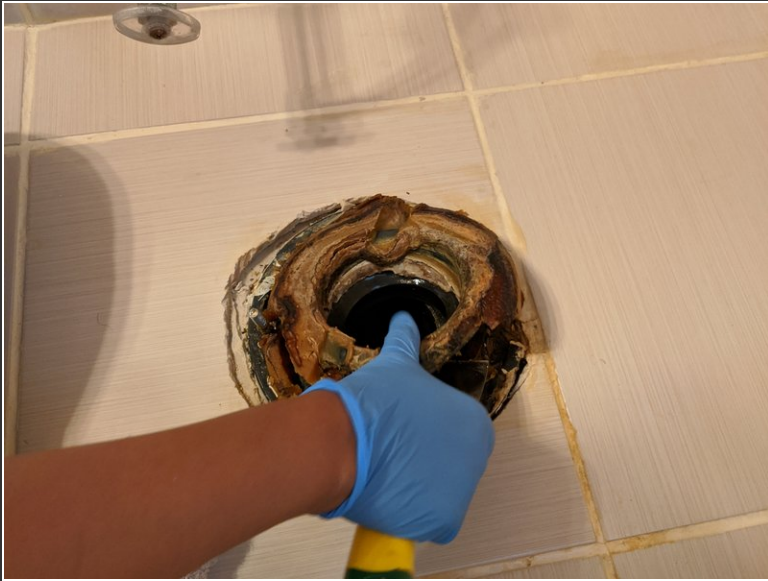
### Step 3



- Remove the bolts on either side of the toilet, then gently remove it and lay it on the side. If there is not enough space, place it on a towel elsewhere. Take care as to ensure you do not accidentally scratch anything.
- ⓘ I used a monkey wrench to remove one of my bolts as they were held in place by excessive wax, but generally you should be able to remove them by hand.



## Step 4



- Scrape off the existing gasket (the wax ring at the bottom).
- ⓘ Optional: Place the new gasket where the previous gasket was after cleaning the spot where it originally was.

## Step 5



- Drop in the new plate, and slide it until it is firmly in place. Make sure the bolts are standing up straight, and are not loose.
- ⓘ The kit I am using only repairs the holes for the bolts, but if you remove the whole flange, the new one simply drops and screws down into place.

## Step 6



- Once you have put back on the gasket, line up the toilet over the bolts, then slowly lower it down until both bolts clear their respective holes. Set it down and ensure the toilet is level and straight.

## Step 7



- Slowly tighten the bolts on both sides with the washer and nuts included in the kit, making sure the toilet does not shift.

- ⓘ Some kits have overly long bolts, so once you have secured the toilet, you can gently saw the bolts to a more appropriate size with a handsaw.

**⚠** Do NOT over-tighten the bolts, as doing so might damage the toilet!

## Step 8



- Clean up the area, and reconnect the waterline. Once connected, turn back on the valve.
- If water leaks out, the toilet is not positioned properly and needs to be readjusted. Restart from step 7, after undoing the bolts and lifting the toilet back up.
- If there are no leaks, reconnect the waterline and clean up any excess wax. Congratulations, you have successfully replaced your toilet flange!