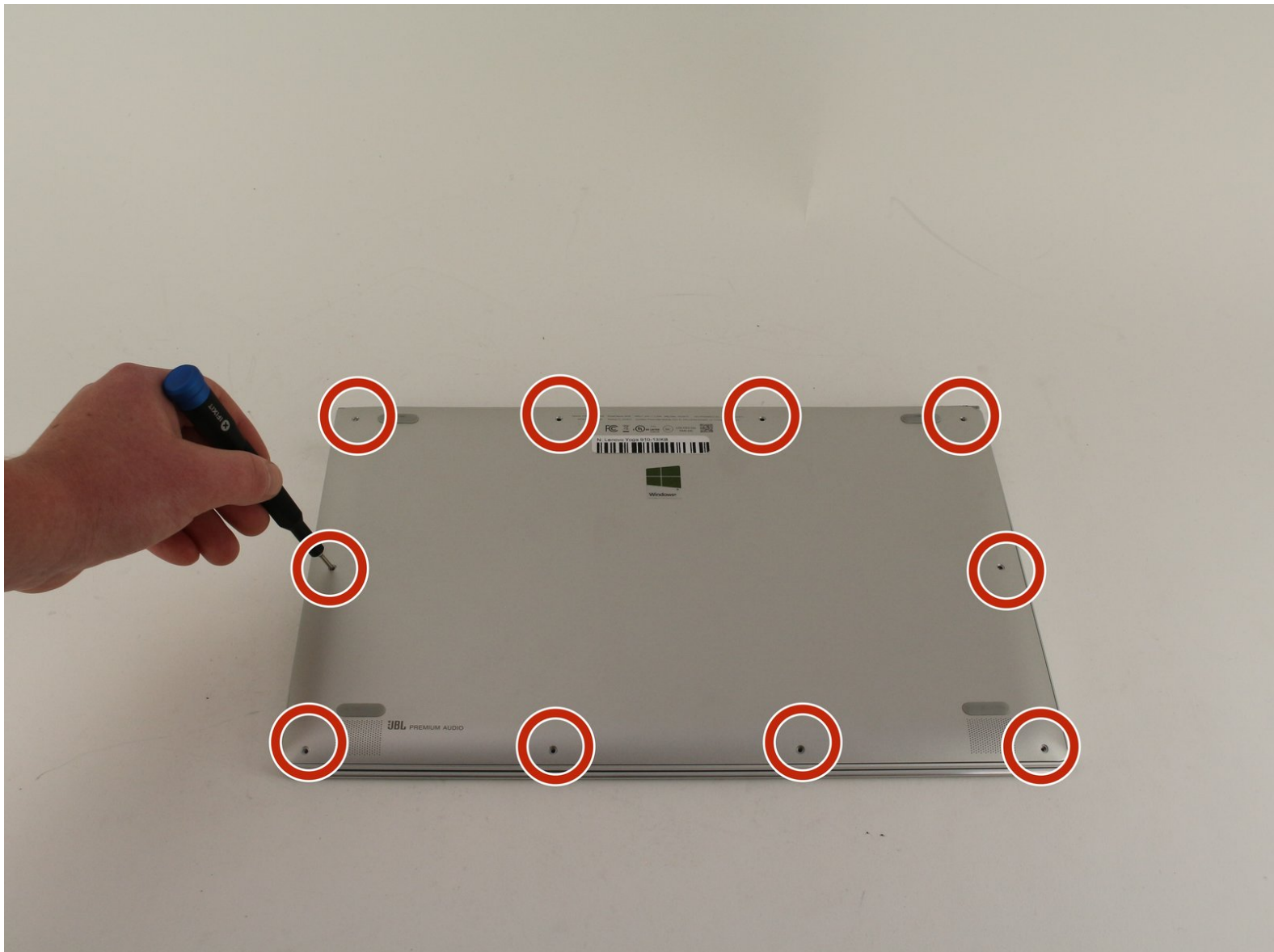




Lenovo Yoga 910-13IKB Bottom Panel Replacement

This guide describes how to remove the bottom panel of a Lenovo Yoga 910-13IKB.

Written By: Kristen Gismondi



INTRODUCTION

In this guide, you will learn how to remove the bottom panel on the Lenovo YOGA 910-13IKB.

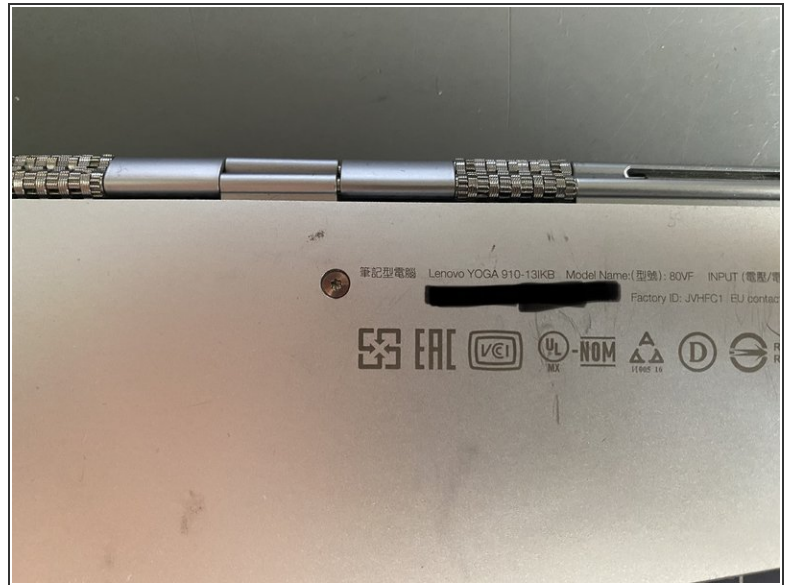
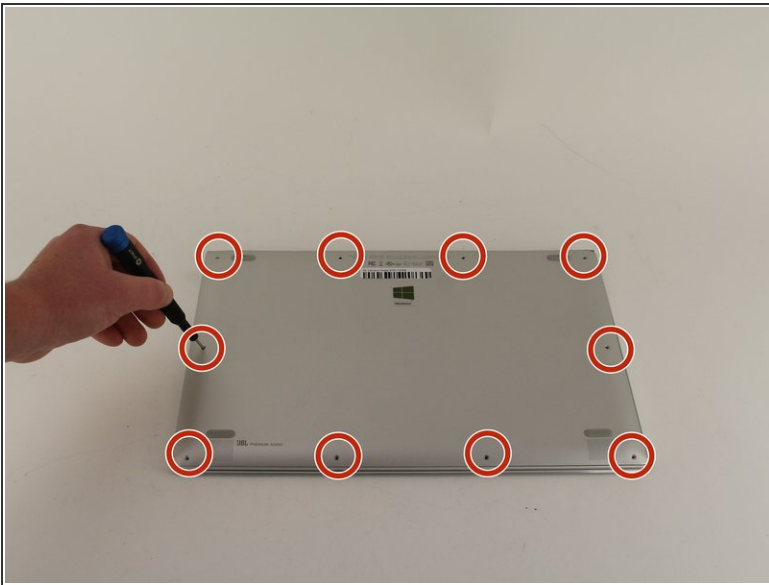
This has to be done to perform any maintenance or repairs on the device.



TOOLS:

- [T5 Torx Screwdriver](#) (1)
 - [iFixit Opening Tools](#) (1)
-

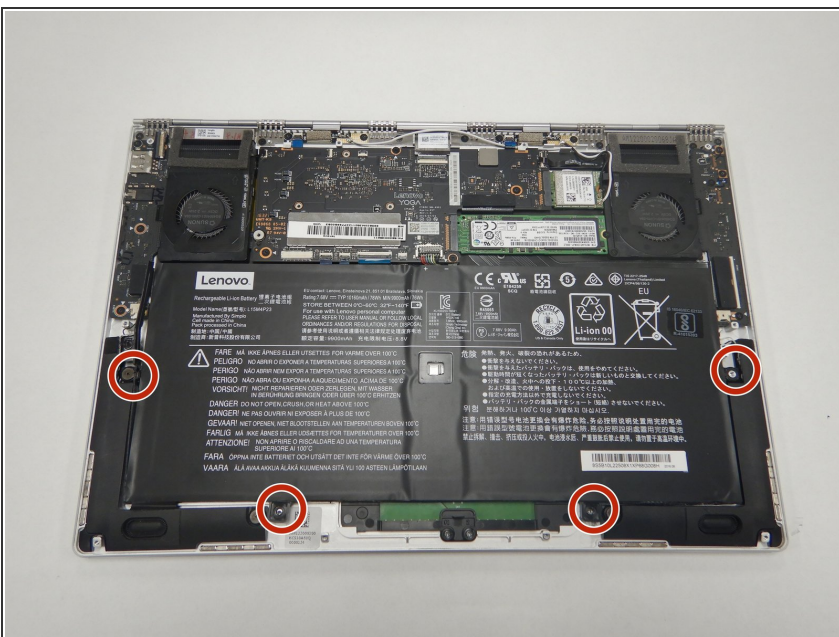
Step 1 — Bottom Panel



i Before you begin, be sure to turn off your laptop and unplug it from the outlet.

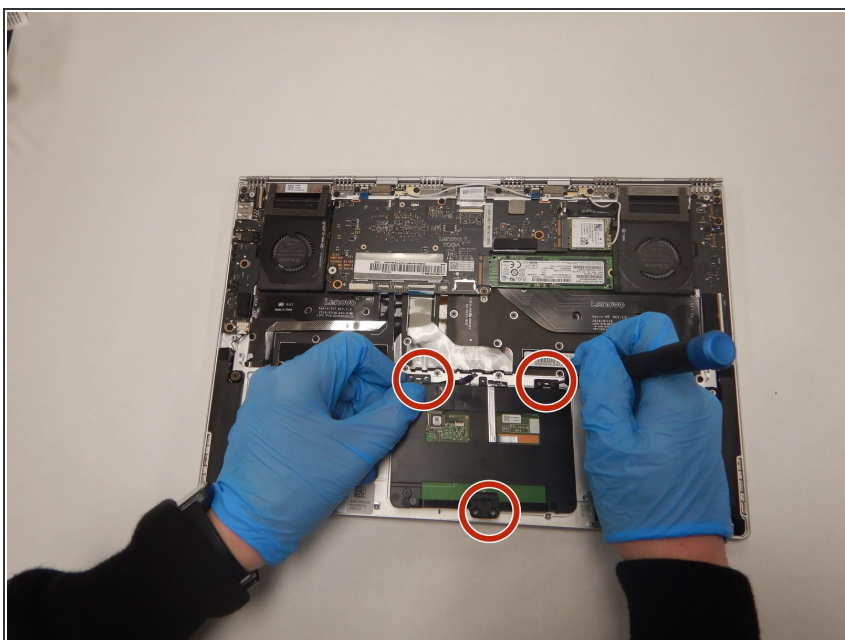
- Turn the laptop over and remove the ten Torx T5 screws along the perimeter of the bottom panel.
- Remove the panel.

Step 2



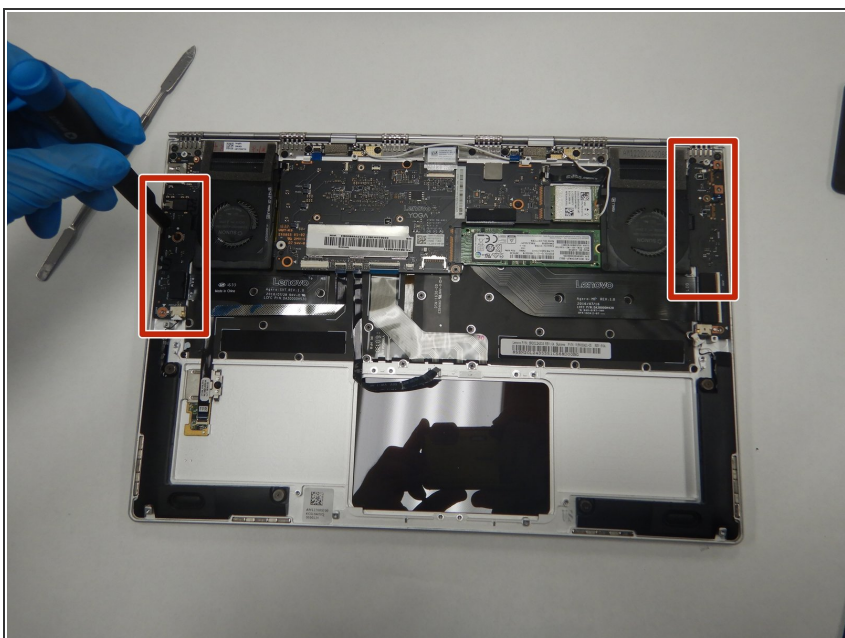
- Remove all 4 screws attached to the battery with a small Phillips head screwdriver.
- Each screw on the back is M2 x 1.7mm
- After the screws are taken out, remove the battery.

Step 3



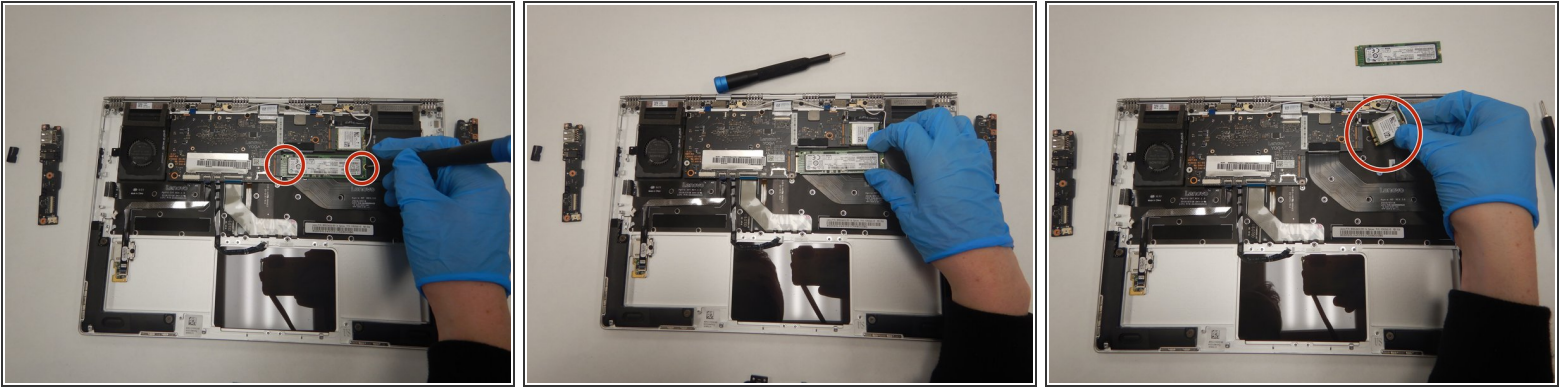
- Remove all 6 screws attached to the trackpad with a small Phillips head screwdriver.
- Each screw on the back is M2 x 1.7mm
- Detach the ribbon cable connected to the trackpad using a wedge device.
- Remove the trackpad using a wedge device

Step 4



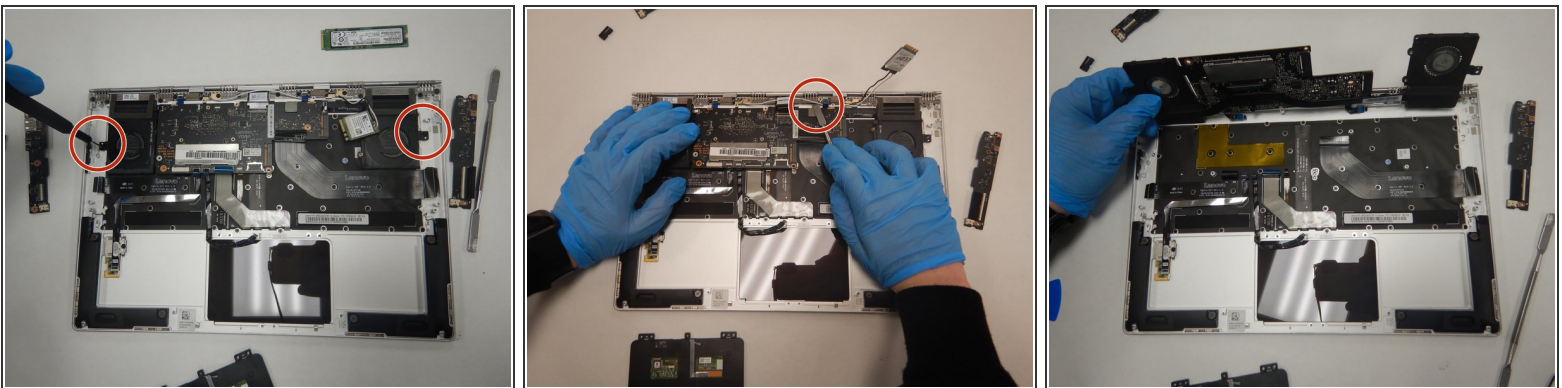
- Remove all 6 screws attached to the USB ports on both sides of the device with a small Phillips head screwdriver.
- Detach both ribbon cables attached to each USB port with a wedge device, then detach the USB ports.

Step 5



- Remove all 4 screws attached to SSD stick with a small Phillips head screwdriver.
- Pull the SSD stick directly to the right until it shifts out of place to remove it.
- The storage chip above it (further away from you) may also simply be detached by pulling it directly to the right until it clicks out.

Step 6



- Remove all 4 screws attached to both fans, and the back connector strip (long metal piece furthest from you with screws in it) with a small Phillips head screwdriver
- Remove the back connector strip using a wedge device to pry it off of the device
- With the back connector strip removed, pry the fans (which are attached) using a wedge device and the fans will now be maintainable.

To reassemble your device, follow these instructions in reverse order.