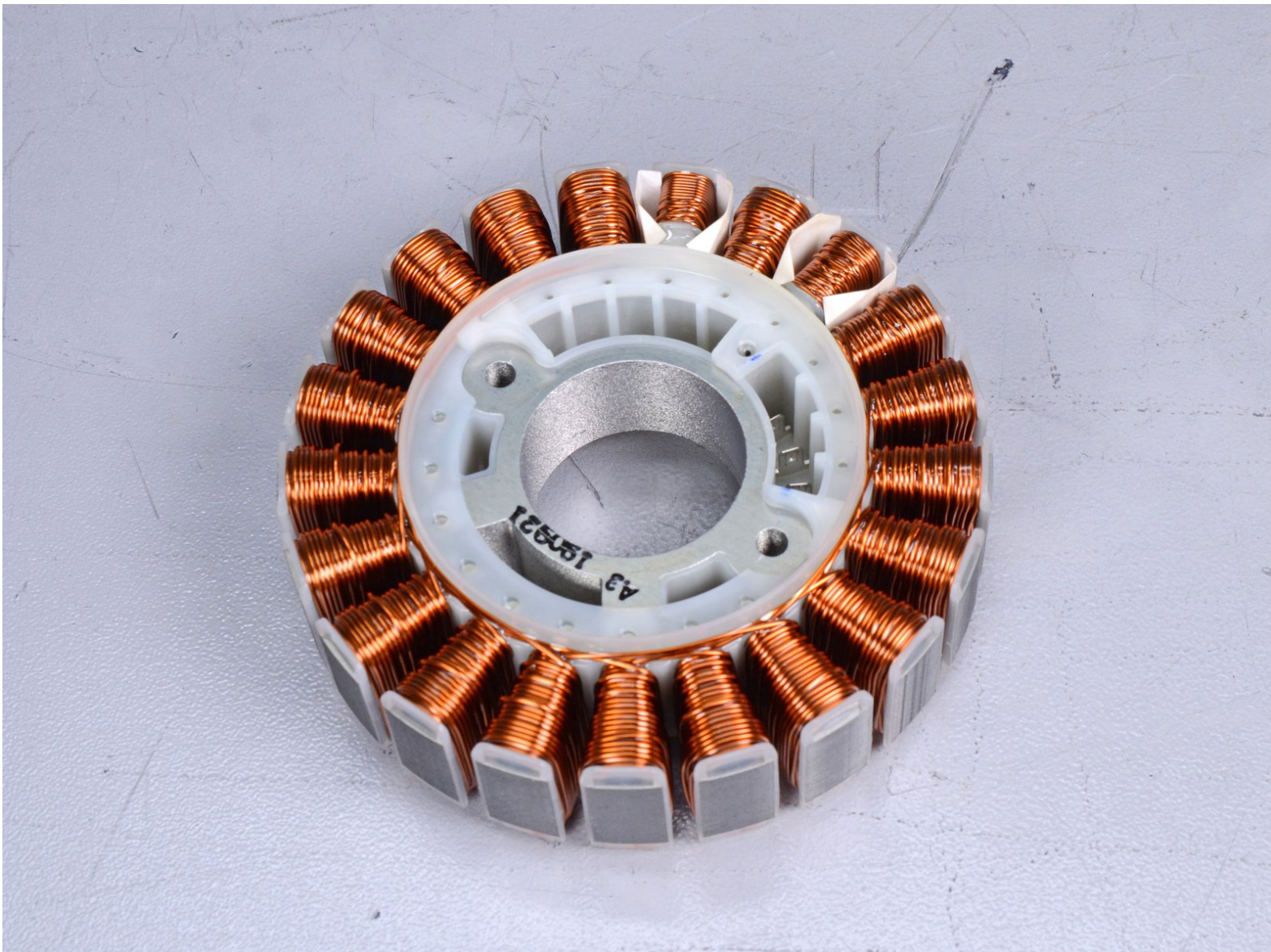




# Honda EU2200IT A2 Stator Replacement

Remove and replace the stator for the Honda EU2200IT generator.

Written By: Arthur Shi



## INTRODUCTION

This guide shows how to remove and replace the stator for the Honda EU2200IT generator.

This is a very involved procedure and requires major disassembly. If you encounter problems during the process, consult the official Honda service guides.

**You will need a flywheel puller with a metric collar set in order to pull the rotor off.** You can purchase Honda's puller collar set (07APC-ZY1A100), or you can fashion a set yourself with some metric bolts and washers.

**The rotor is heavily bolted onto a free-spinning shaft.** An impact wrench may be able to loosen the bolt. You may also need a strap wrench to hold the rotor steady.

**Drain the fuel from the fuel tank before you begin this procedure.** Any fuel remaining in the tank will spill out. Be ready to contain any spillage.

**You will need to refill the engine oil for this procedure.** The generator requires up to 0.46 liters of SAE 10W-30 oil.

You may find it helpful to loosely replace the bolts after you removed a part, in order to keep track of the bolts and to keep the screw holes clean.

### TOOLS:

- [Flywheel Puller](#) (1)
- [Flathead Screwdriver](#) (1)
- [Phillips #2 Screwdriver](#) (1)
- [8 mm socket](#) (1)
- [10mm Socket](#) (1)
- [Socket 19mm](#) (1)
- [Socket Wrench](#) (1)
- [Large Needle Nose Pliers](#) (1)
- [Rubber Mallet](#) (1)
- [Pin Punch](#) (1)
- [Flush Wire Cutters](#) (1)
- [Torque Wrench](#) (1)
- [Oil Drain Pan](#) (1)
- [Strap Wrench](#) (1)


### PARTS:

- [Honda STATOR 31125-Z44-A31](#) (1)
- [Honda GASKET, INSULATOR 16212-Z0D-D00](#) (1)
- [Honda GASKET, CARBURETOR 16221-ZG0-801](#) (1)
- [Honda GASKET, AIR IN. JOINT 17274-ZT3-000](#) (1)
- [Motor Oil 1qt 10W-30](#) (1)



## Step 1 — Honda EU2200IT A2 Safety Precautions



 Before you begin, make sure the generator is switched off and the generator is cool to the touch.

## Step 2 — Disconnect the spark plug



- Lift and remove the spark plug cover.

### Step 3



- Grab the plastic housing at the end of the spark plug wire.
- Pull firmly to disconnect the wire from the spark plug.

### Step 4 — Remove the maintenance cover



- Use a Phillips #2 screwdriver to loosen the screw holding the maintenance cover in place.



## Step 5



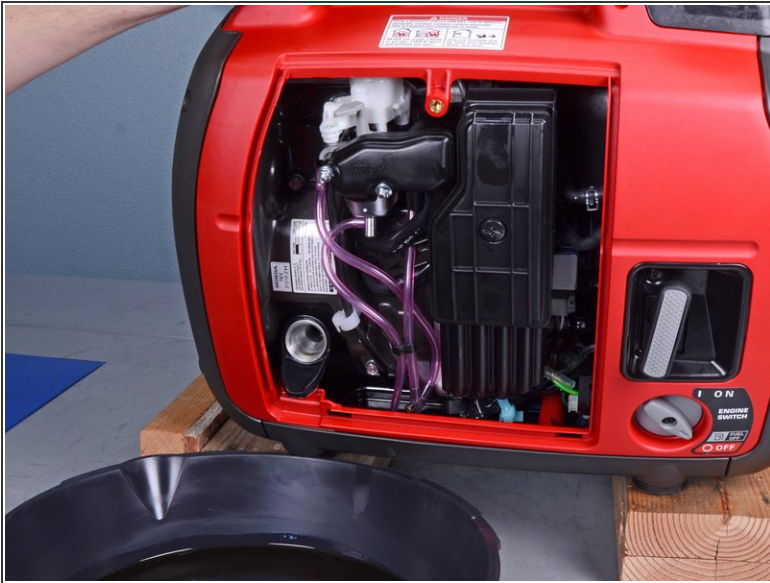
- Swing the top of the maintenance cover out.
- Remove the maintenance cover.

## Step 6 — Drain the engine oil



- Unscrew and remove the oil filler cap.

## Step 7



- Place an oil pan below the fill port to catch the engine oil.
- Carefully tilt the generator towards the oil pan to drain the oil.

## Step 8



- ⚠ During reassembly, be sure to refill the engine oil:
- ⚠ If you recently resealed the crankcase cover with liquid sealant, wait at least 20 minutes before adding oil.
- ⓘ Use SAE 10W-30 oil, up to 0.46 US quarts.
- Add oil until the dipstick is almost completely submerged.

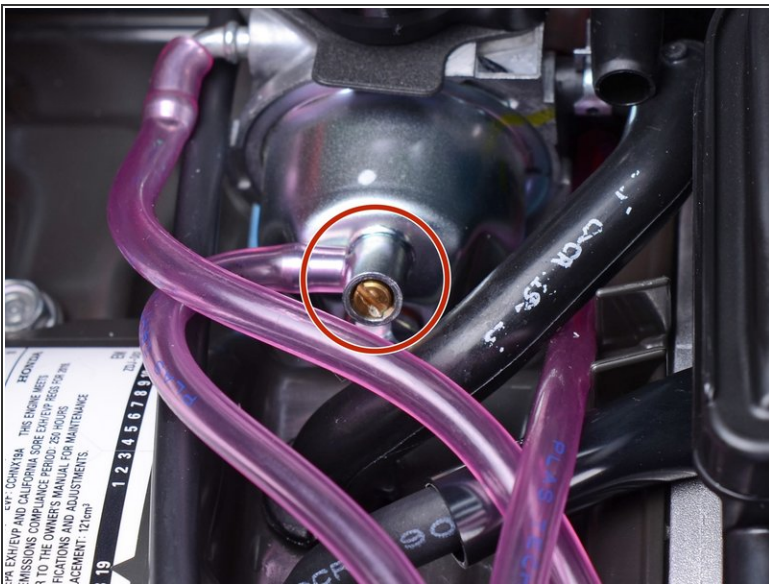


## Step 9 — Drain the carburetor fuel bowl



- Place a container below the drain tube to catch the excess fuel.

## Step 10



- The carburetor drain screw is located at the bottom of the carburetor.
- Use a flathead screwdriver to loosen the fuel drain screw until fuel begins to drain out of the carburetor.
- Once you drain the fuel bowl, re-tighten the fuel drain screw.

This document was generated on 2020-11-28 08:10:34 AM (MST).

## Step 11 — Back Cover



- Remove the four Phillips screws securing the back cover.

## Step 12



- Remove the back cover.



## Step 13 — Loosen the front cover



- Remove the four screws securing the front cover:
  - Two Phillips screws
  - Two Phillips screws (one on each side)

## Step 14



- Swing the top edge of the front cover away from the generator.
  - Pull the front cover away slightly away.
- ⚠ The front cover still has many wires connected to it. Be careful not to strain any wires.

## Step 15 — Remove the left cover



- Remove the lower gray plates from both sides of the generator.
- ☑ During reassembly, be sure to reinstall the gray plate with the air vent cutout onto the right (access-side) cover.

## Step 16



- Remove the fasteners securing the left (non-access) cover:
  - Two Phillips screws
  - Two 10 mm bolts

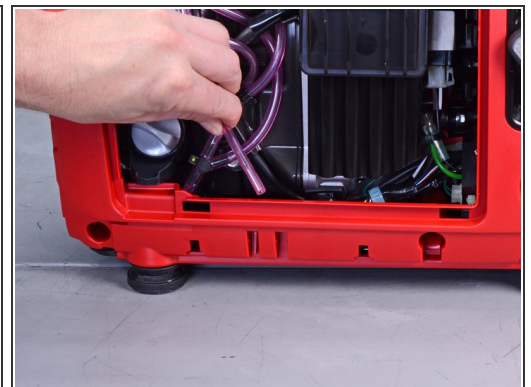
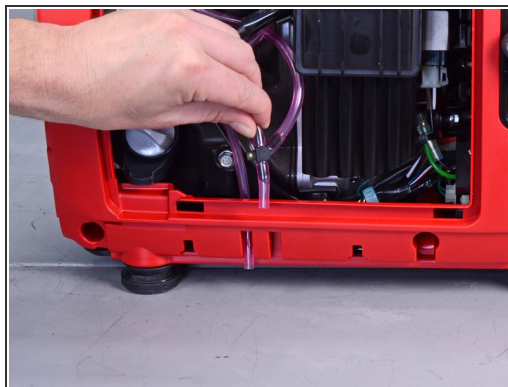
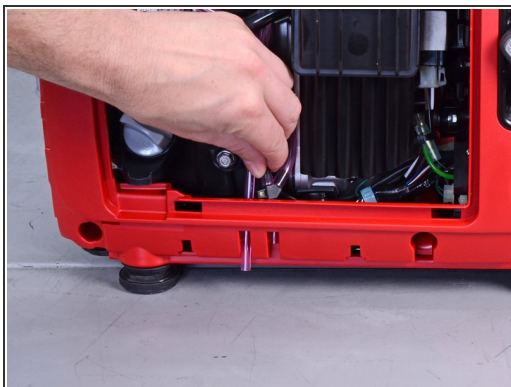


## Step 17



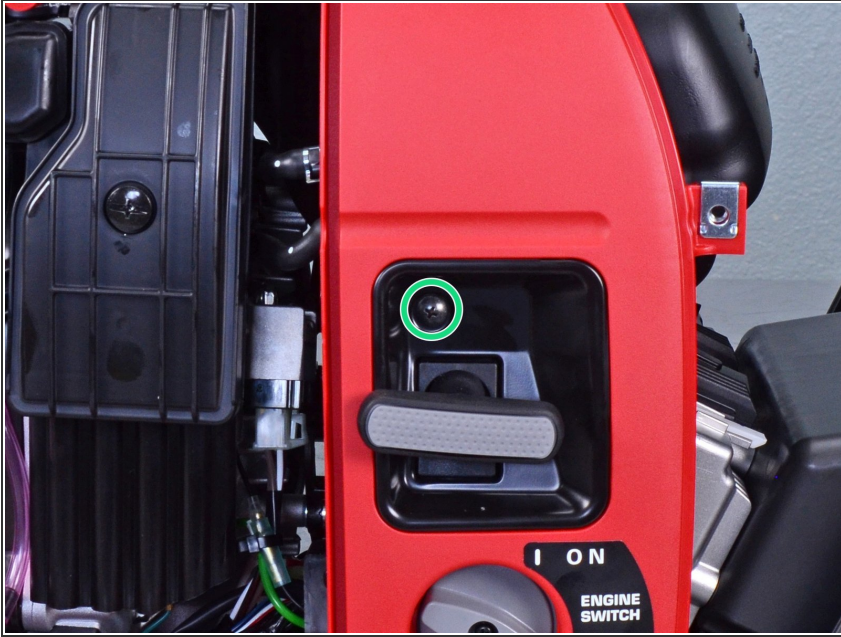
- Remove the left (non-access) cover.

## Step 18 — Remove the right cover



- Slide the vent and drain tubes out of their cover ports along the bottom of the right cover.

## Step 19



- Remove the Phillips screw securing the starter rope port.

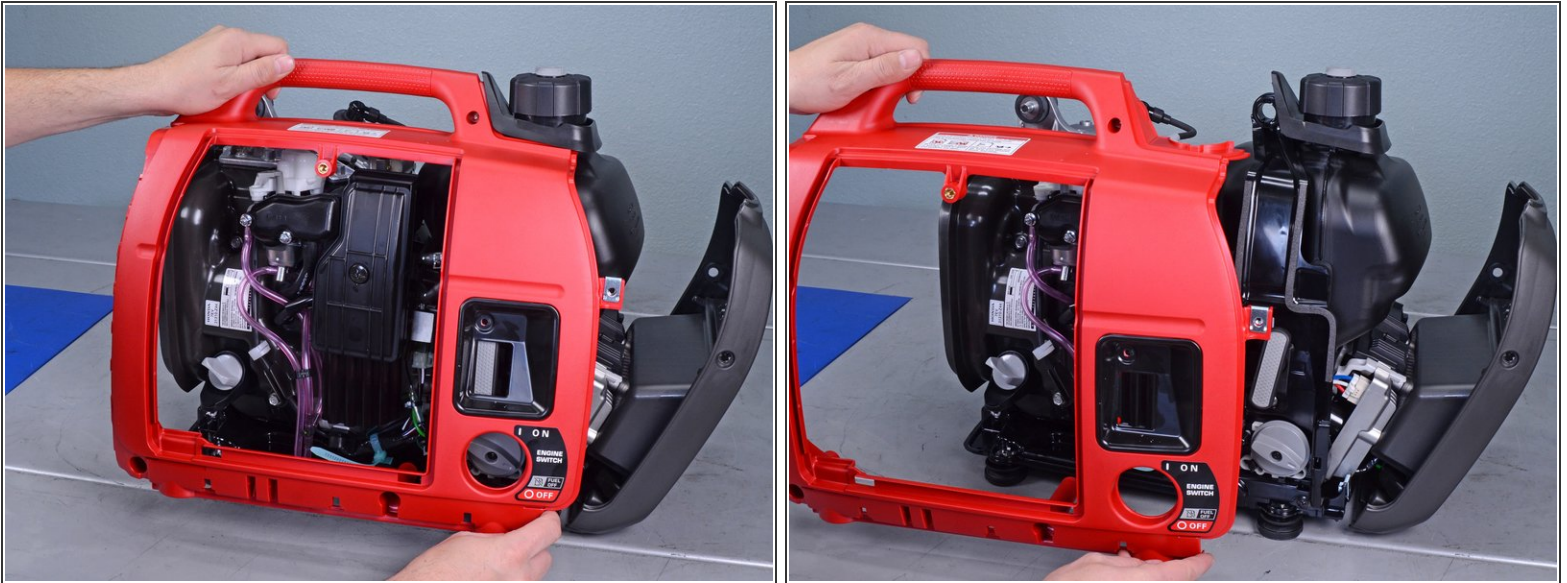
## Step 20



- Thread the starter rope handle through the port's cutout.



## Step 21



- Remove the right (access-side) cover.

## Step 22 — Fuel Tank



**i** If you are replacing only the fuel tank, you can skip the next six steps.

- Use a screwdriver to pry and loosen the diaphragm tube from the fuel pump.
- Disconnect the diaphragm tube from the fuel pump.


## Step 23



- Use a pair of pliers to squeeze and slide the spring clip off the fuel pump port.

## Step 24

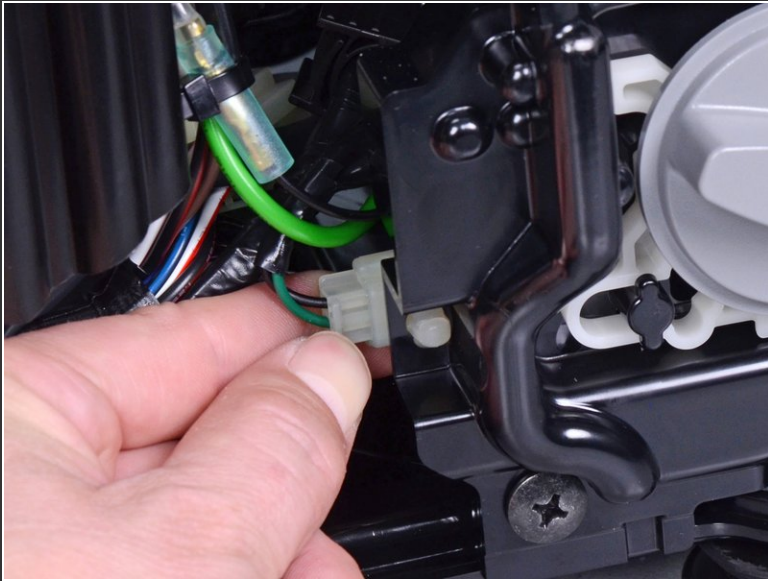


 Residual fuel may leak out of this hose. Be ready to contain any spillage.

- Disconnect the fuel hose from the fuel pump.

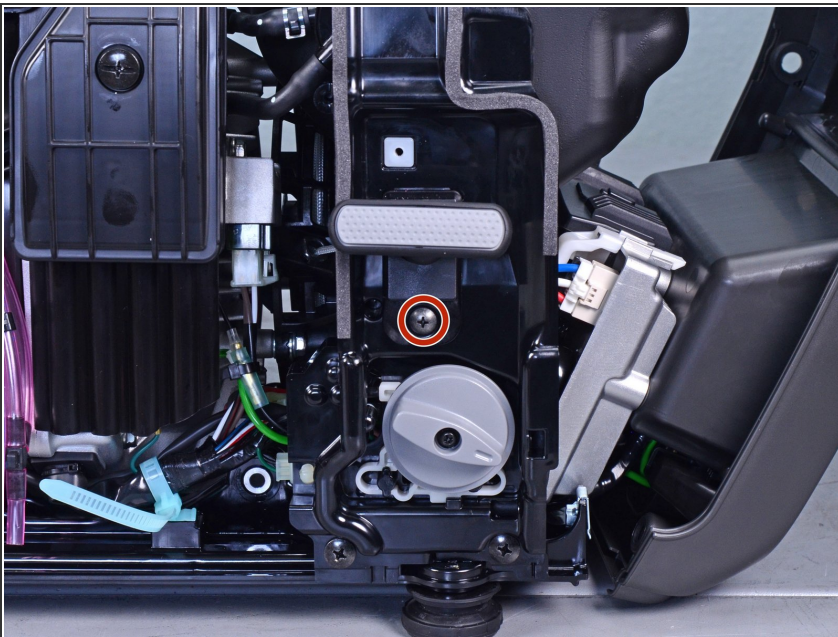


## Step 25



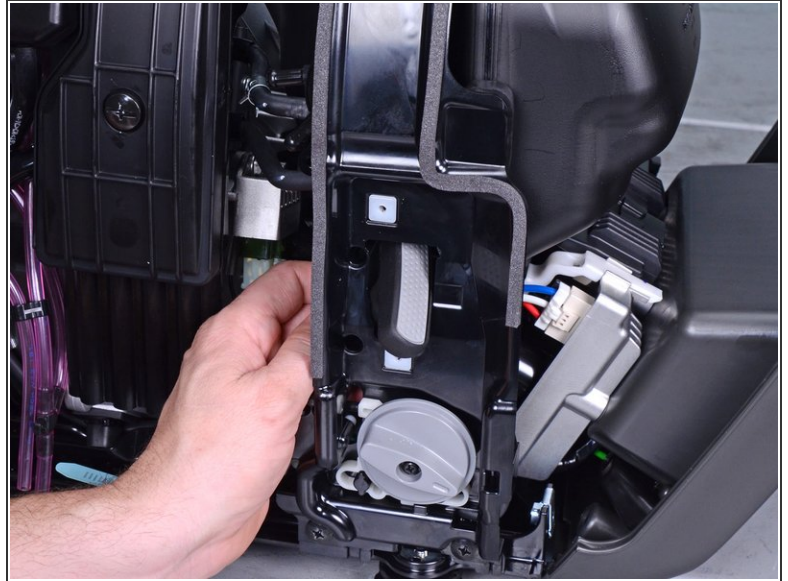
- Pull and disconnect the engine stop switch connector from its socket.

## Step 26



- Remove the Phillips screw securing the starter rope guide.


## Step 27



- Feed the starter rope handle and guide through the panel cutout.

## Step 28 — Remove the fuel tank



 Any residual fuel in the tank will leak. Be ready to contain any spillage.

- Use a pair of pliers to squeeze and slide the spring clip off the fuel tank port.

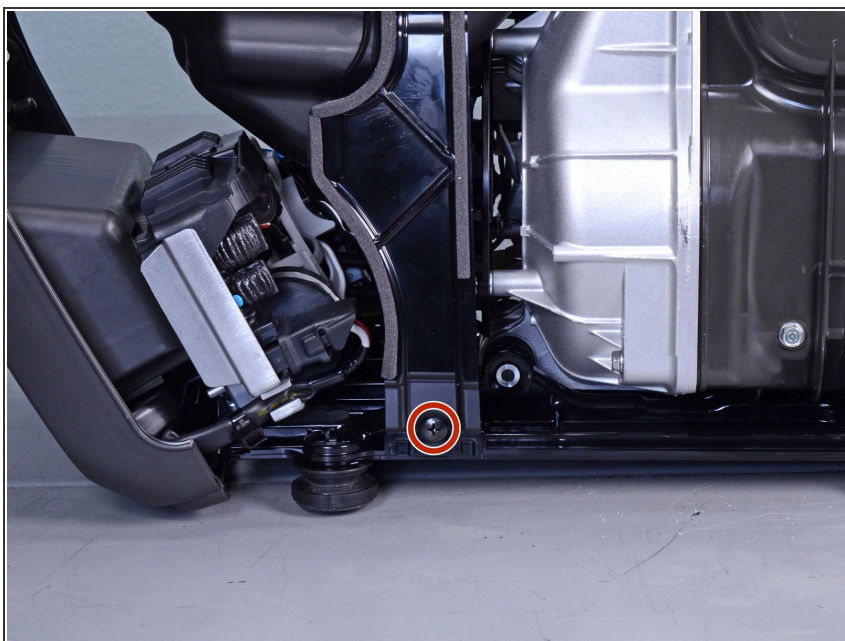


## Step 29



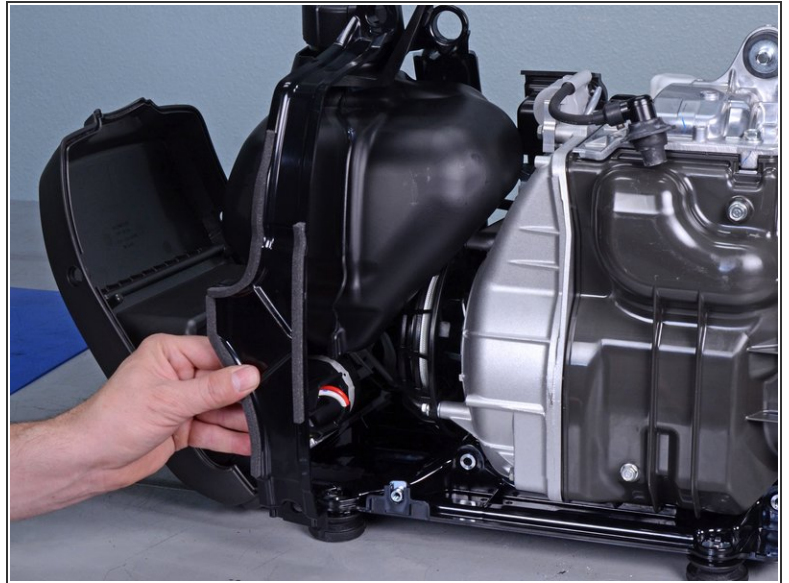
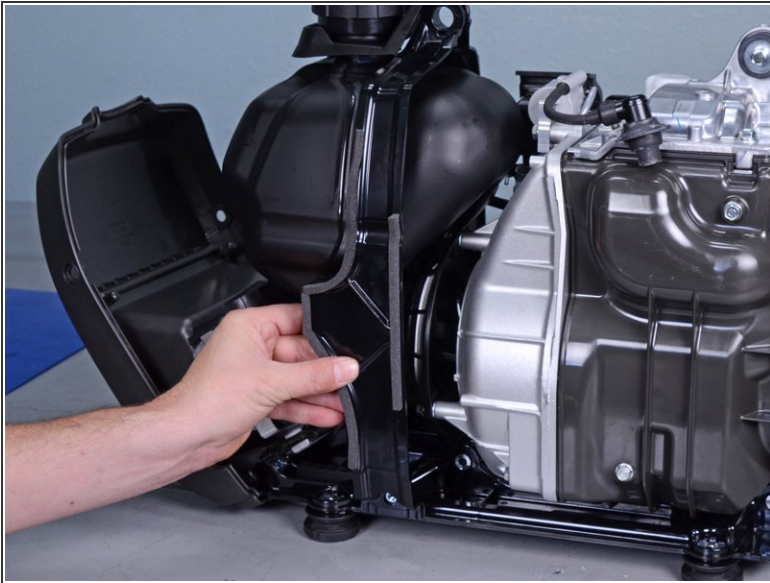
- Disconnect the fuel line and filter from the fuel tank.

## Step 30



- Remove the Phillips screw securing the left (non-access) frame assembly.

## Step 31



- Remove the left (non-access) frame assembly.

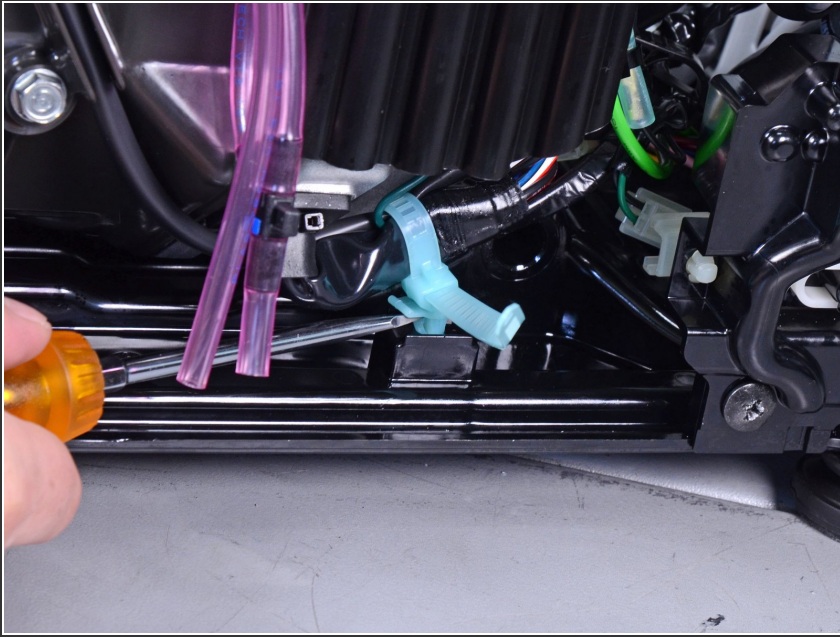
## Step 32



- Lift and remove the fuel tank.

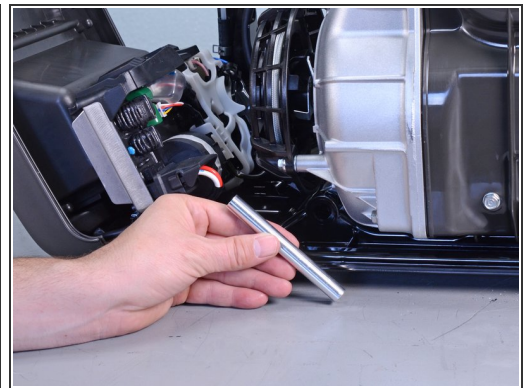
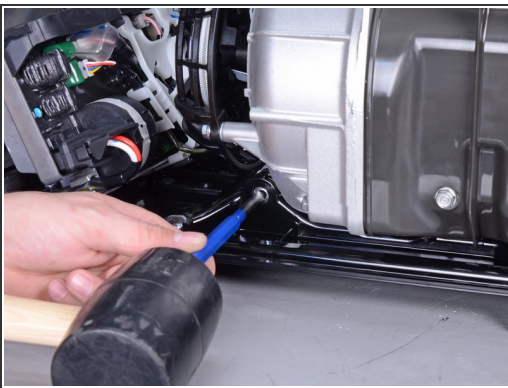


## Step 33 — Remove the under-cover



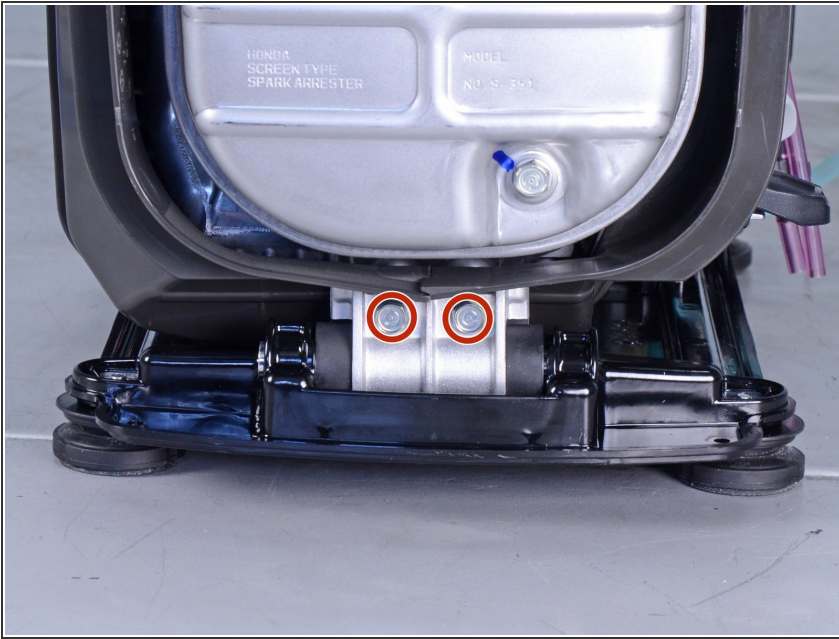
- Use a flathead screwdriver to pry up the blue wire harness from the under-cover.

## Step 34



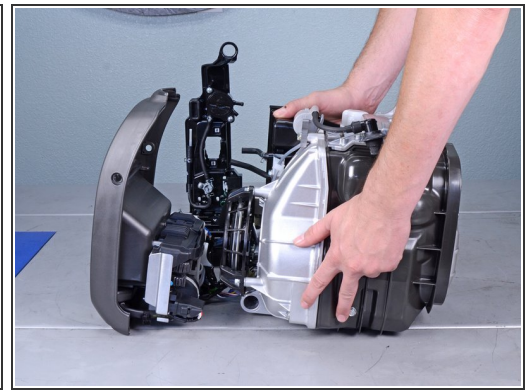
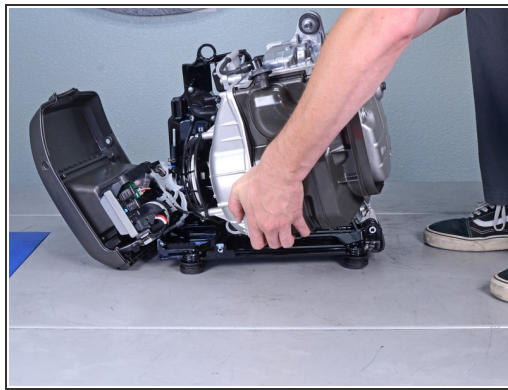
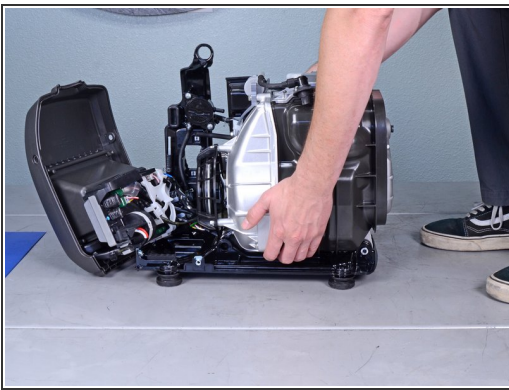
- Use a mallet and punch to tap out the front collar (closest to the electrical panel) securing the motor assembly to the under-cover.


## Step 35



- Use a 10 mm socket to remove the two bolts securing the motor rear to the under-cover.

## Step 36

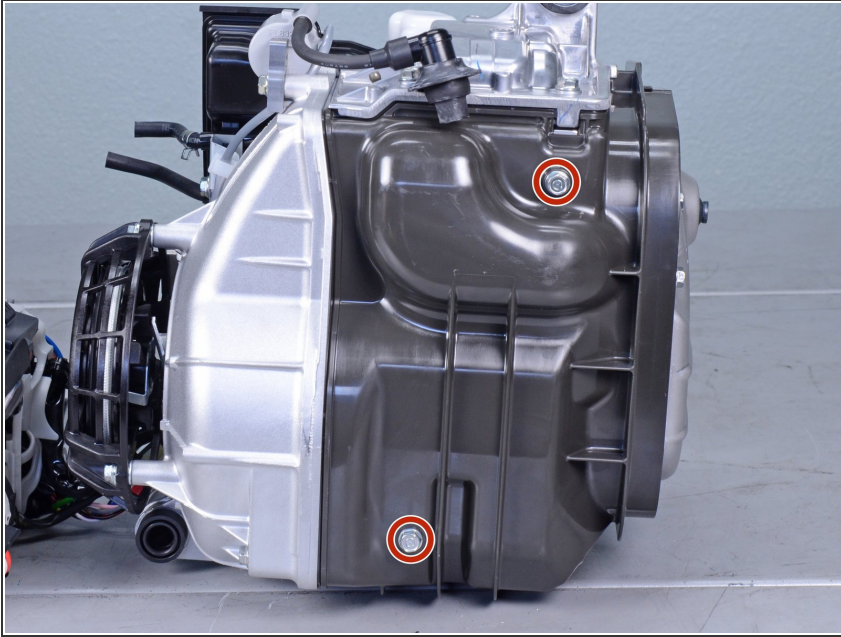


 The motor assembly is heavy. Follow safe lifting practices when you lift the assembly.

- Lift the motor assembly off the under-cover and set it aside.

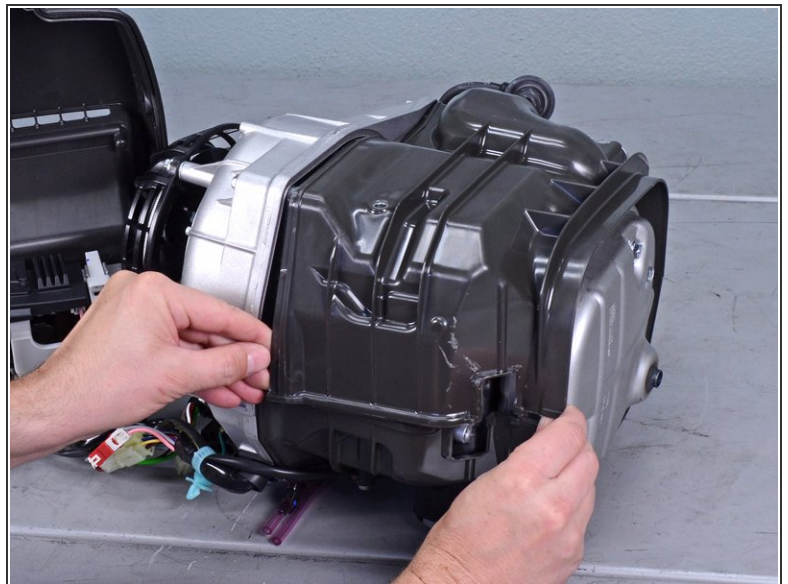
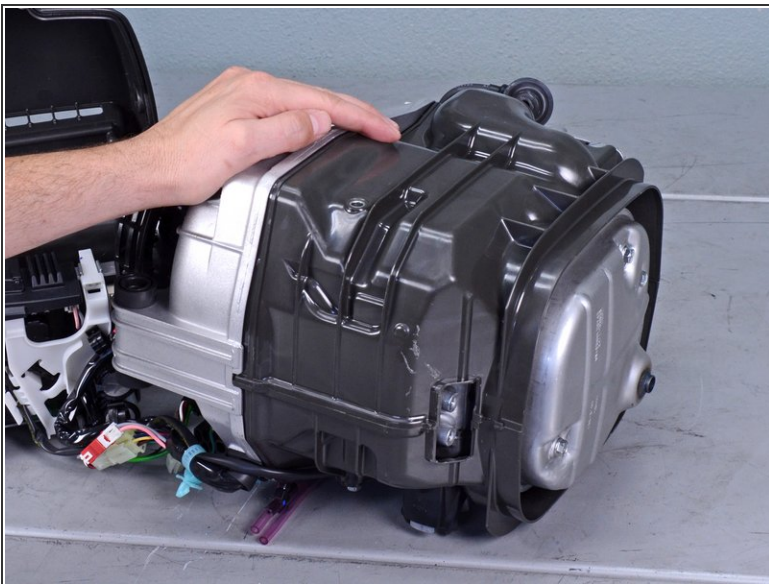


## Step 37 — Remove the left shroud



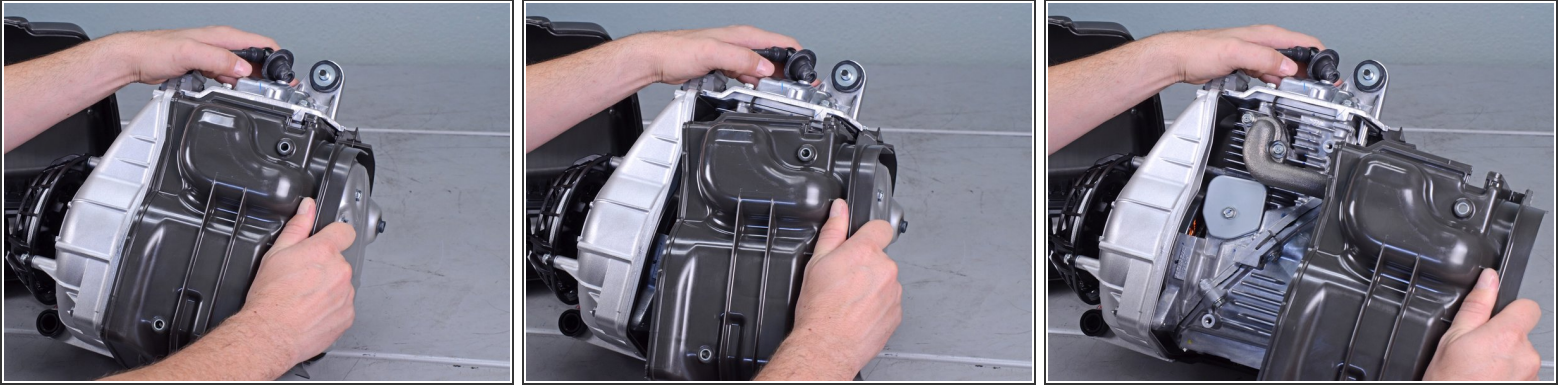
- Use a 10 mm socket to remove the two bolts securing the left shroud.

## Step 38



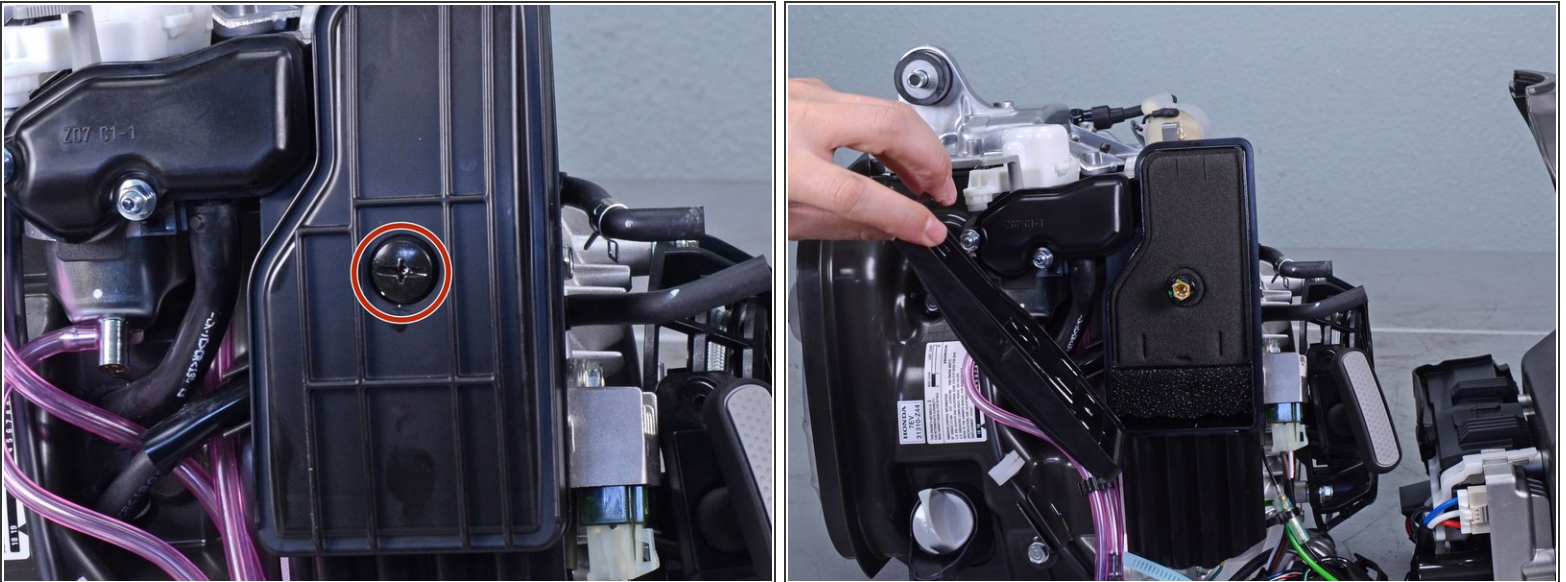
- Begin separating the left shroud from the engine assembly by pulling it away from the assembly.
  - ⓘ The shroud sits in a groove on the engine assembly and may take some force to pull out.

## Step 39



- Pull along the edge of the shroud until you separate the shroud from the engine assembly.
- Remove the shroud.

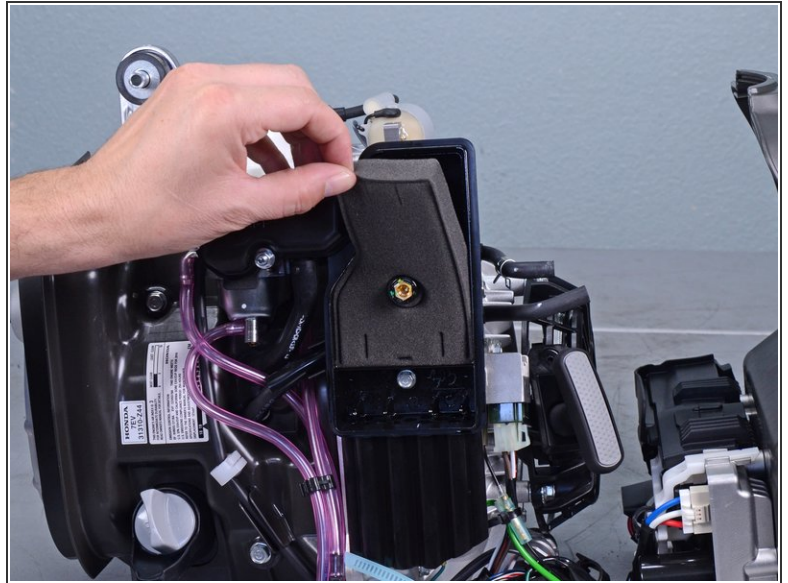
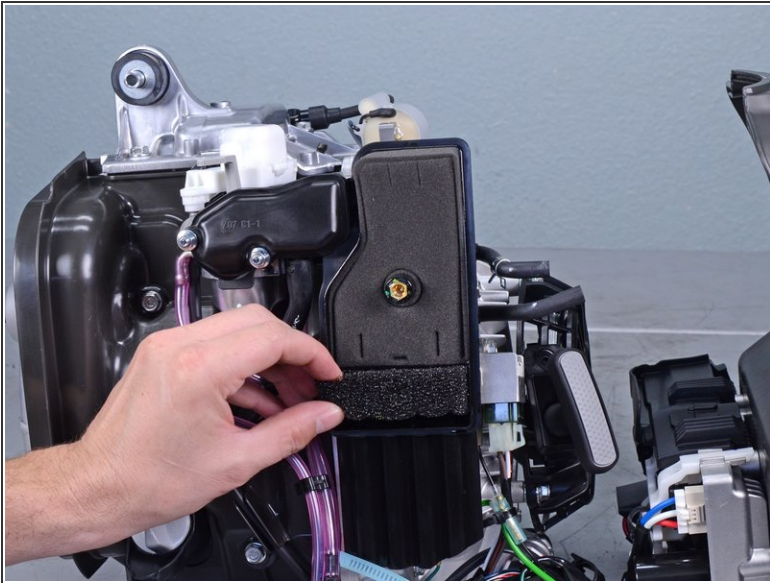
## Step 40 — Remove the air filter housing



- Remove the Phillips screw securing the filter cover.
  - ✦ During reassembly, be sure to tighten the screw to at least **1.7 ft-lb** to prevent it from loosening during operation.
- Remove the filter cover.

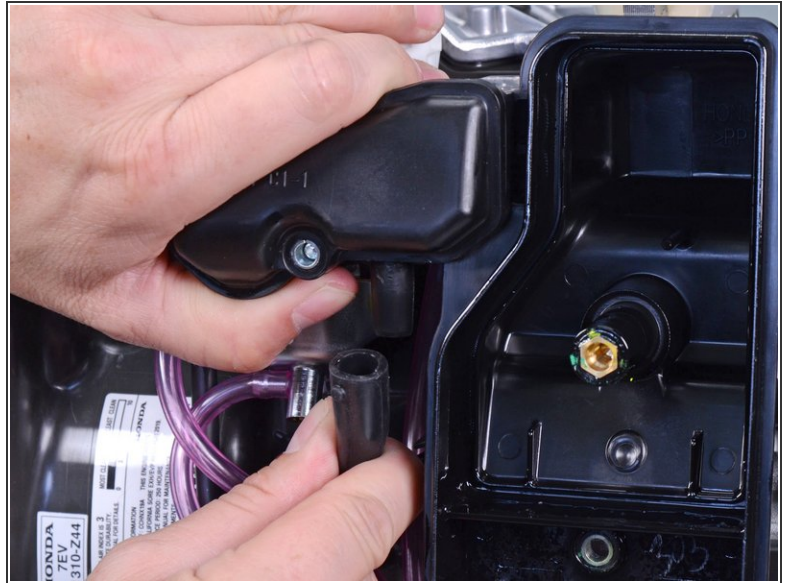


## Step 41



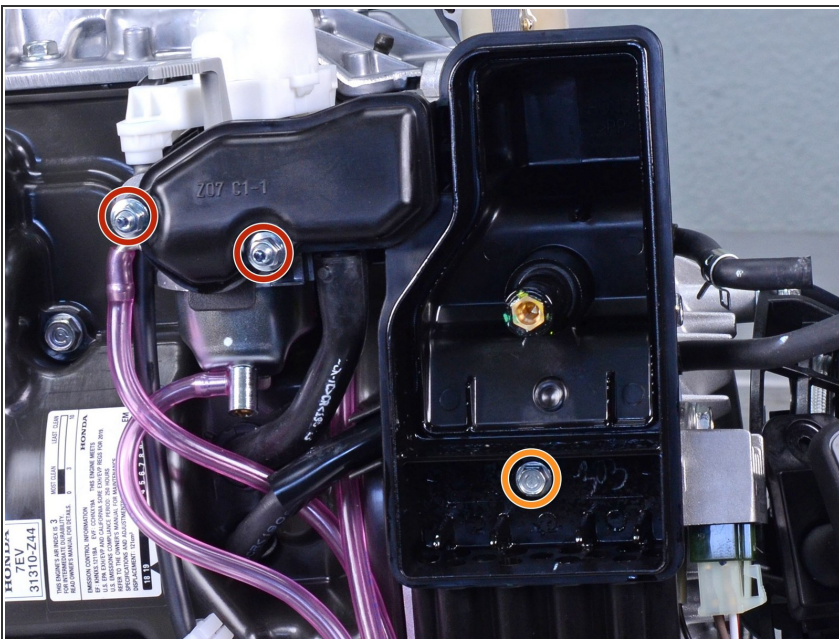
- Remove the air filters from the filter box.
- ⓘ To clean the filters:
  - Clean the filters in warm soapy water
  - Allow the filters to dry thoroughly
  - Dip the filters in clean engine oil, and squeeze out excess oil

## Step 42



- Disconnect the breather tube from the air cleaner housing.

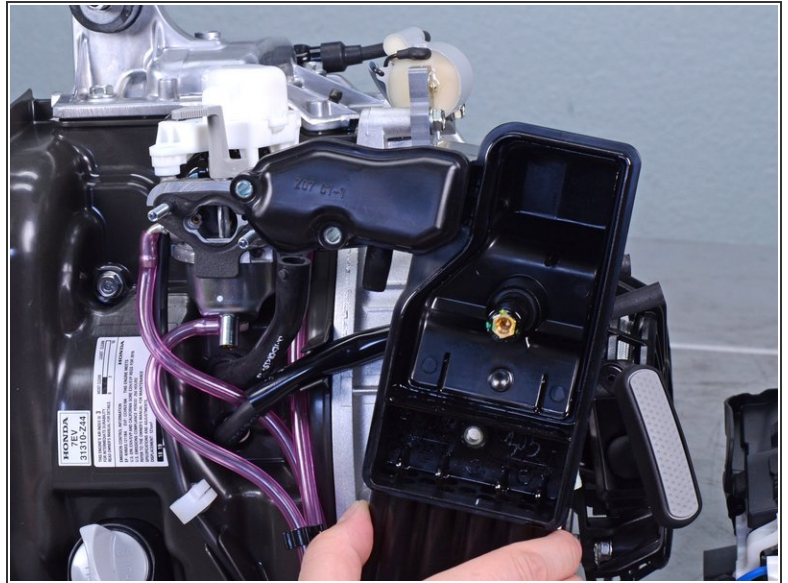
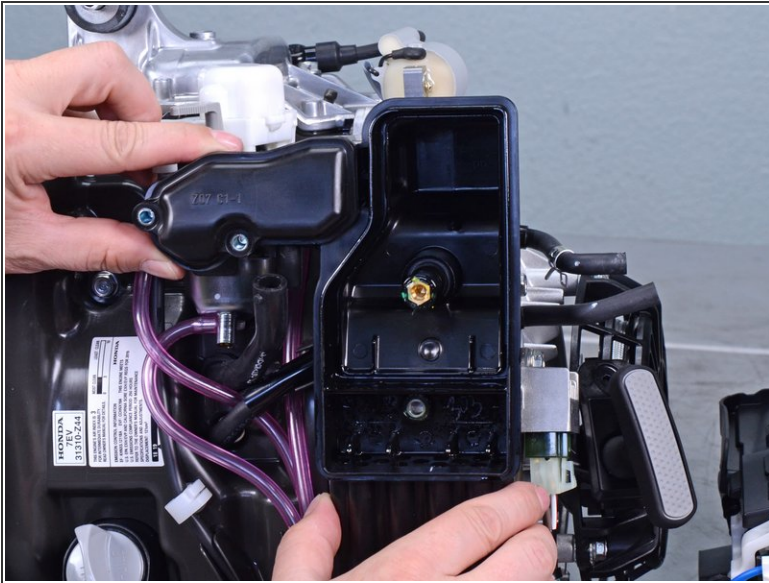
## Step 43



- Remove the following fasteners securing the housing:
  - Two 8 mm nuts
    - ☑ During reassembly, tighten these to **3.6 ft-lb**.
  - One 8 mm bolt



## Step 44



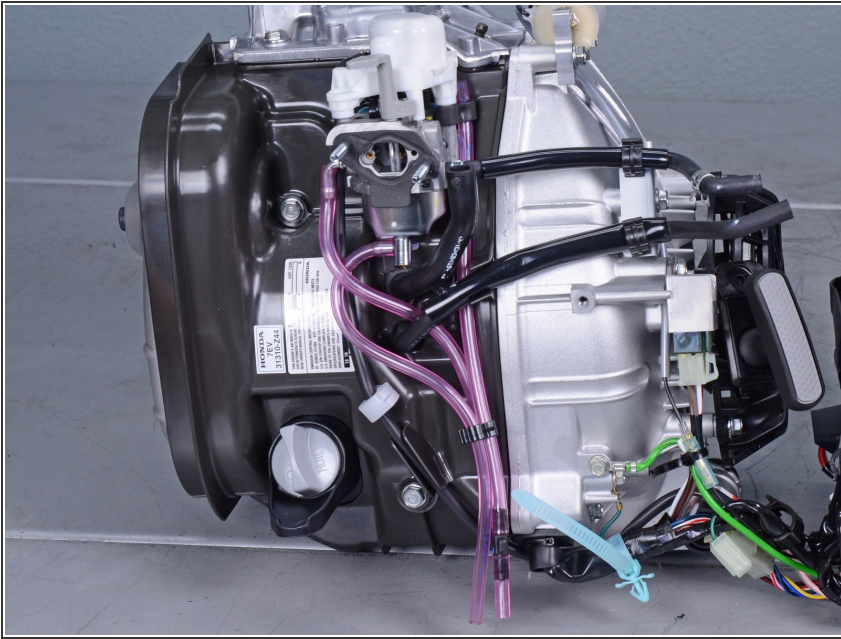
- Remove the air filter housing.

## Step 45



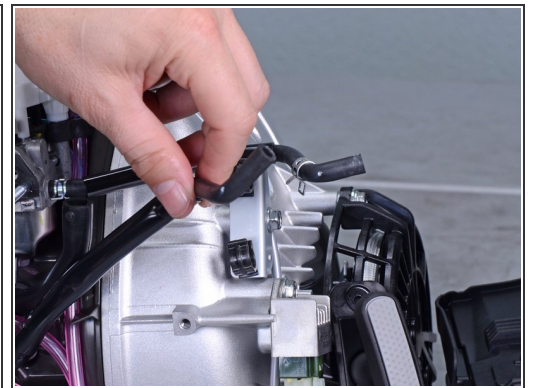
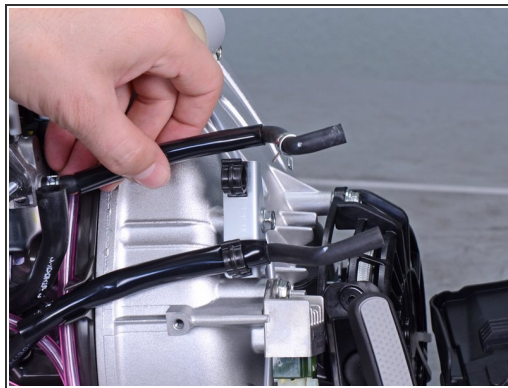
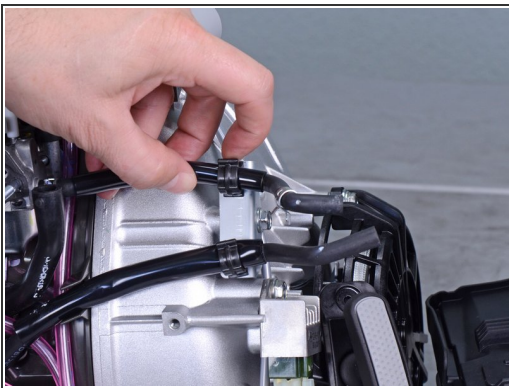
- ☑ During reassembly, replace the air intake gasket if it shows signs of wear.

## Step 46



- ✦ During reassembly, use this photo as a reference for how to route the hoses.

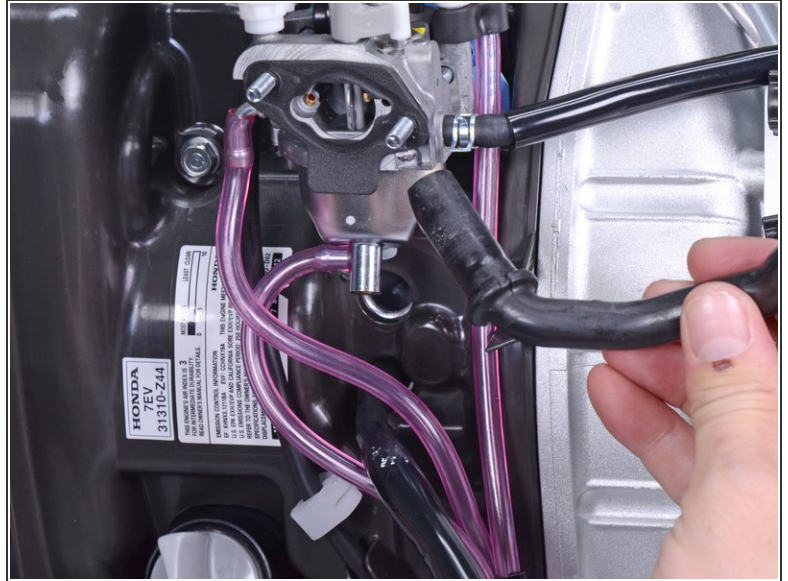
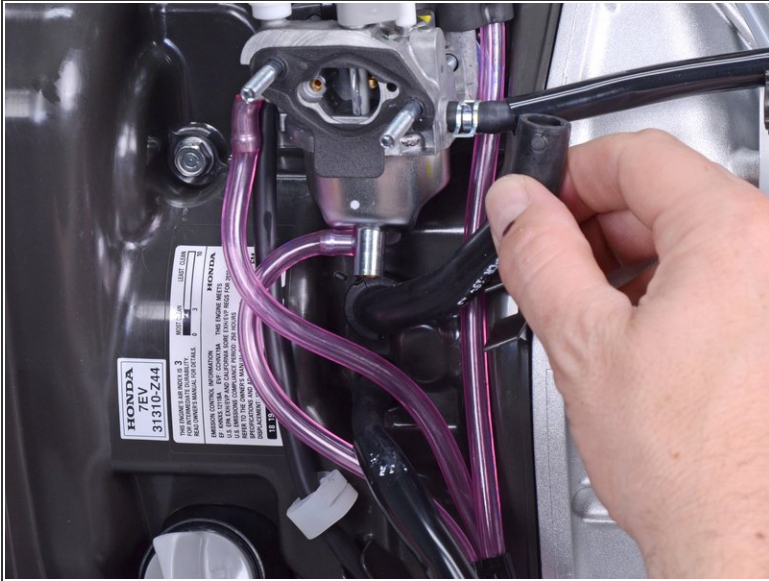
## Step 47



- Unclip the fuel and air hoses from the side of the motor assembly.

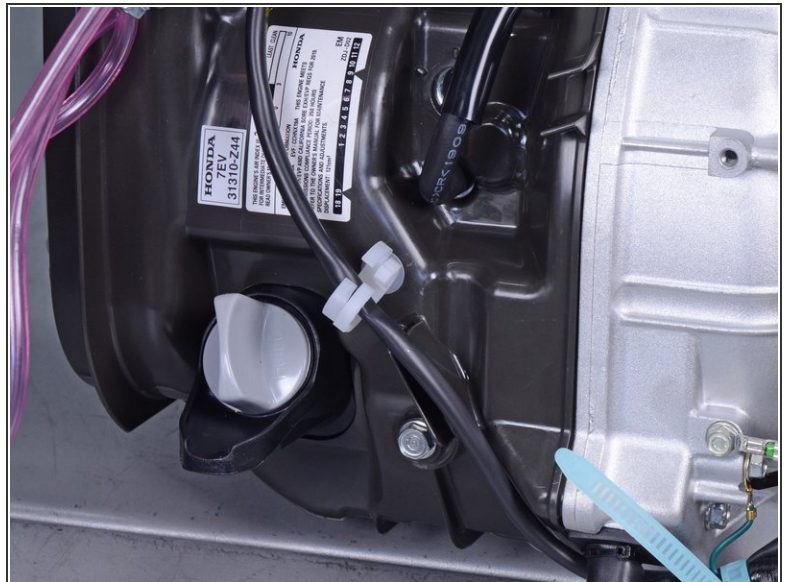


## Step 48



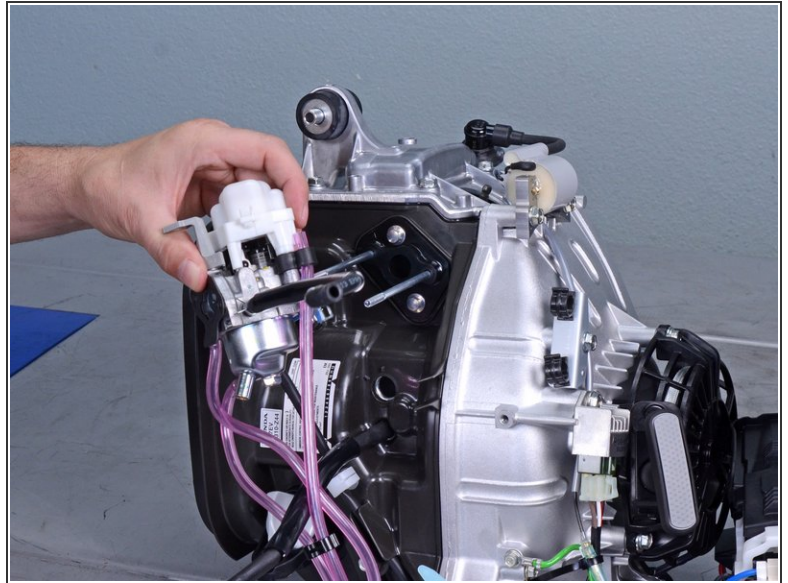
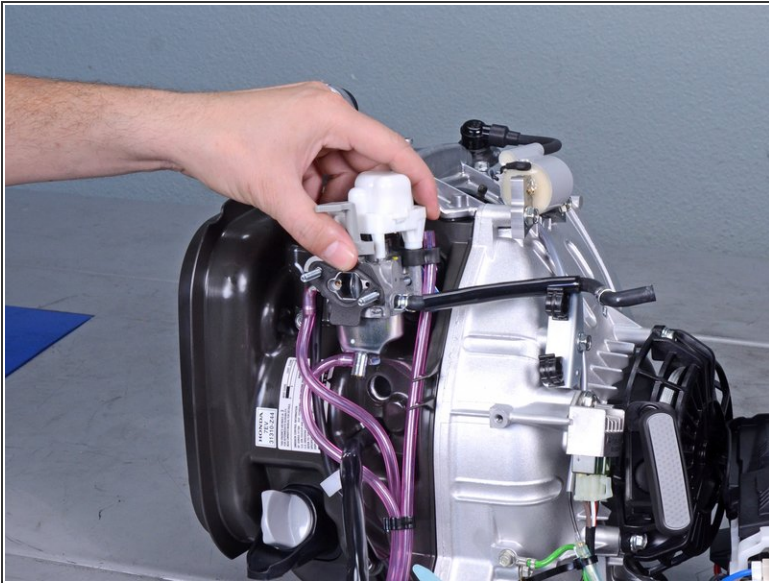
- Pull the breather tube straight out of its port.

## Step 49



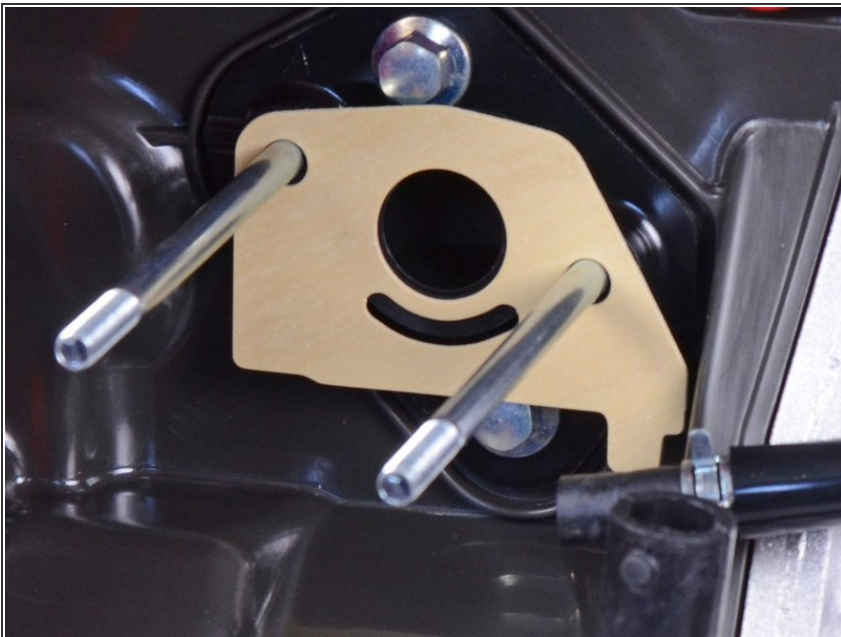
- Use a flathead screwdriver to unclip the carburetor wires from the side of the motor assembly.

## Step 50



- Slide the carburetor off its two bolt rails.

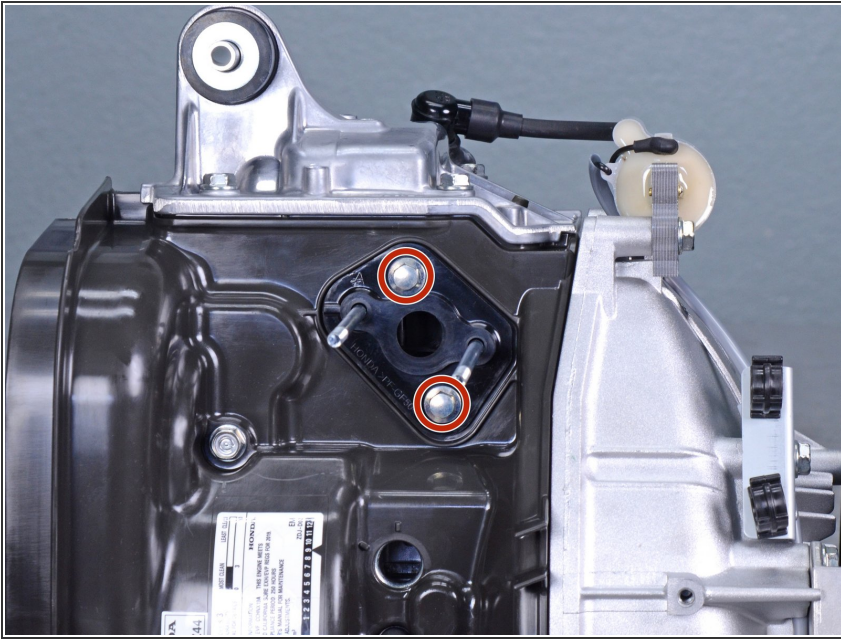
## Step 51



- ★ During reassembly, replace the carburetor seal if it shows signs of wear.

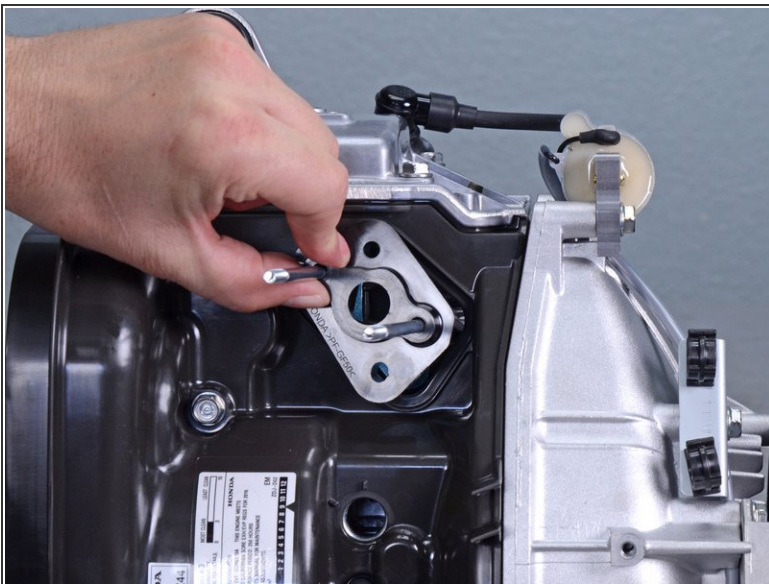


## Step 52



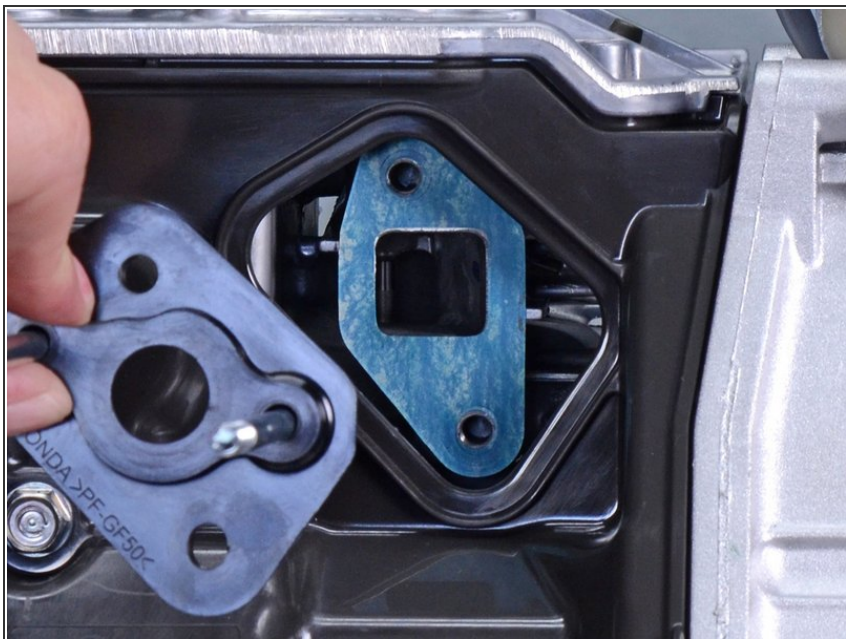
- Use an 8 mm socket to remove the two bolts securing the carburetor insulator.
- ☑ During reassembly, tighten these bolts to **2.2 ft-lb**.

## Step 53



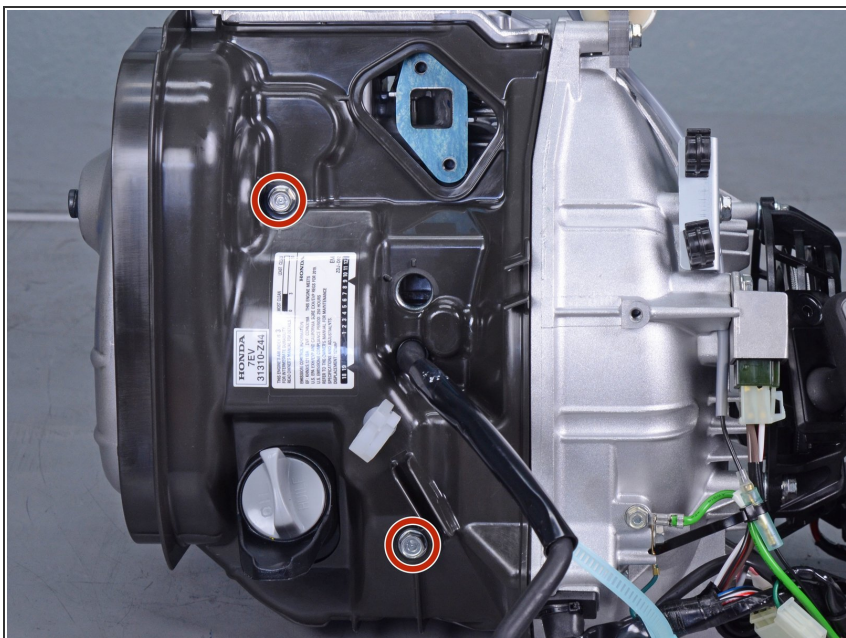
- Remove the carburetor insulator along with the two bolt rails.

## Step 54



- ✦ During reassembly, replace the insulator gasket if it shows signs of wear.

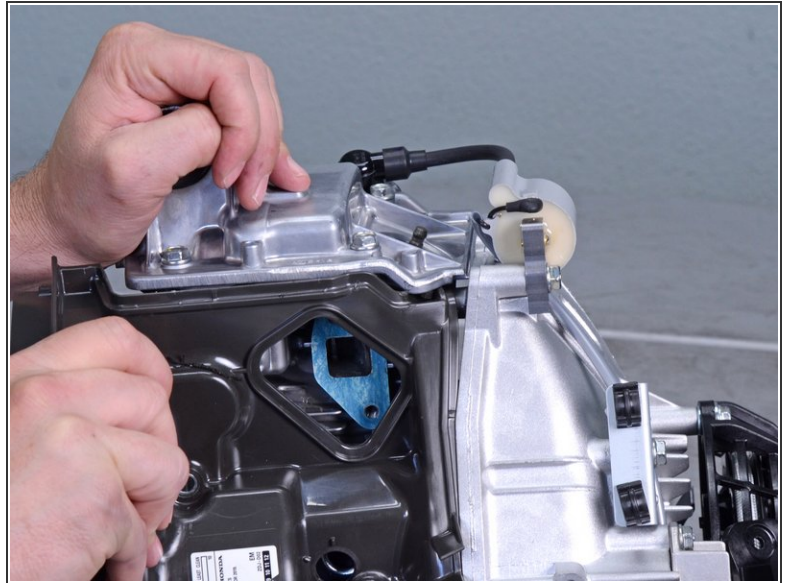
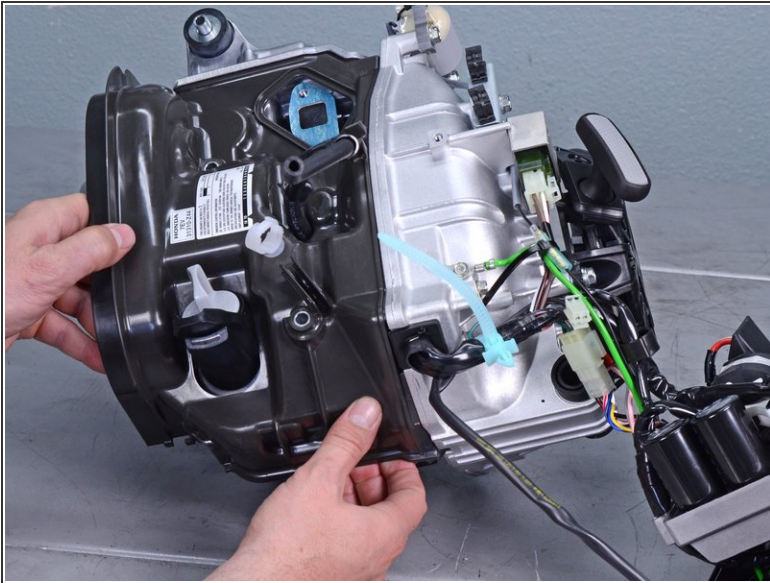
## Step 55



- Use a 10 mm socket to remove the bolts securing the right shroud.

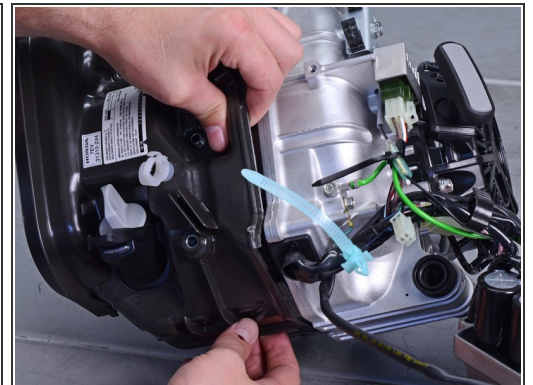
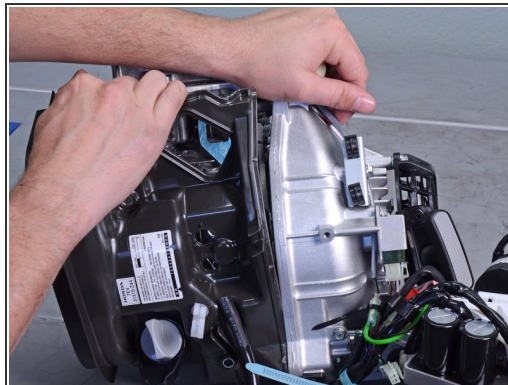
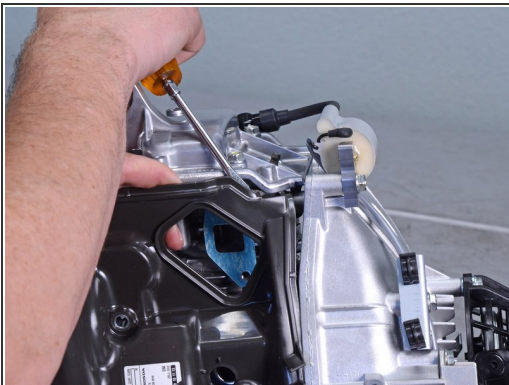


## Step 56



- Begin separating the right shroud from the engine assembly by pulling it away from the assembly.

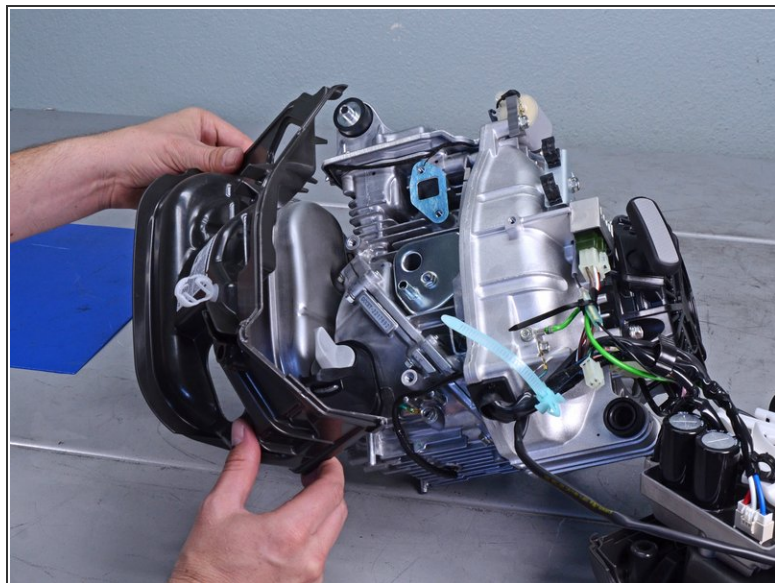
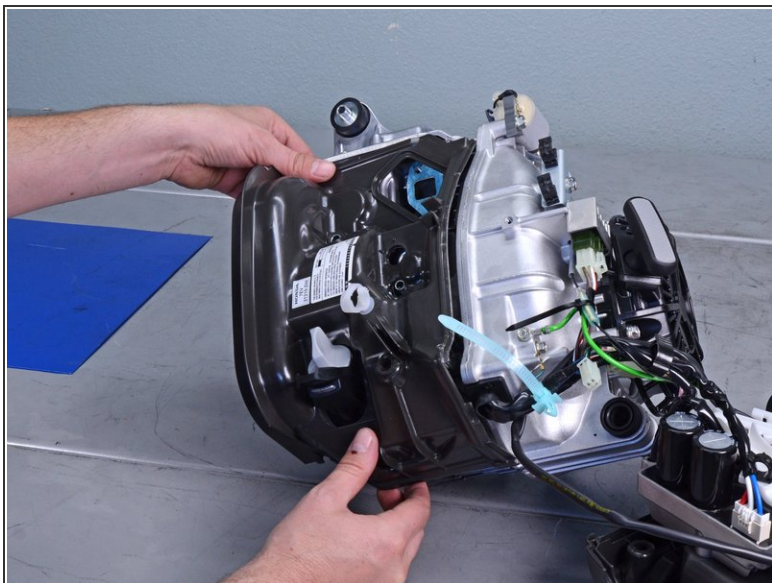
## Step 57



- Pull the shroud away along the edge. Use a flathead screwdriver to pry it out of the engine assembly groove.

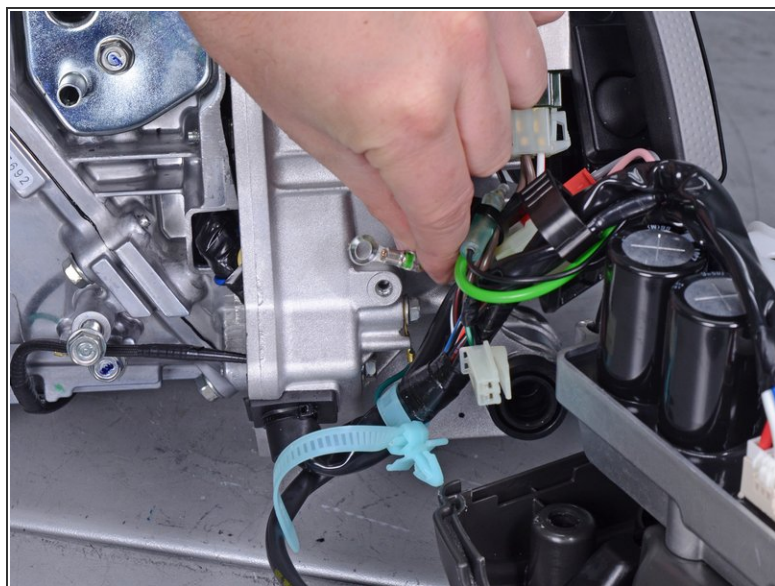
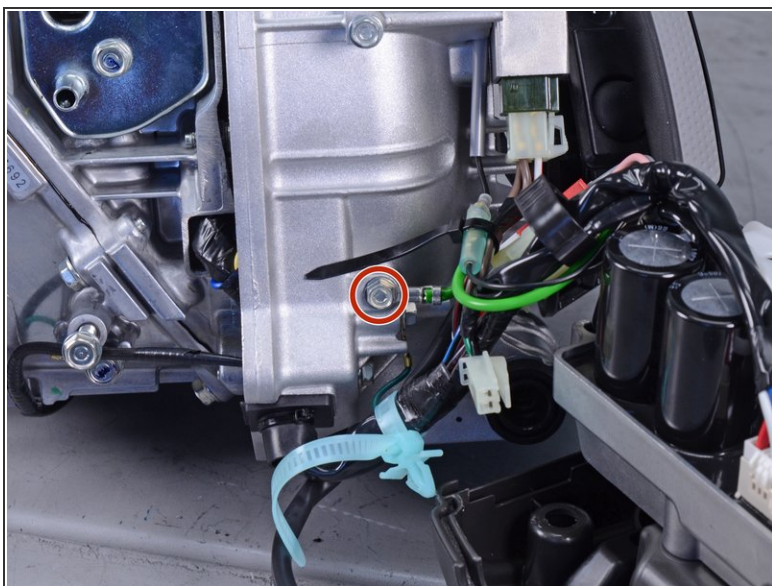


## Step 58



- Remove the right shroud from the engine assembly.

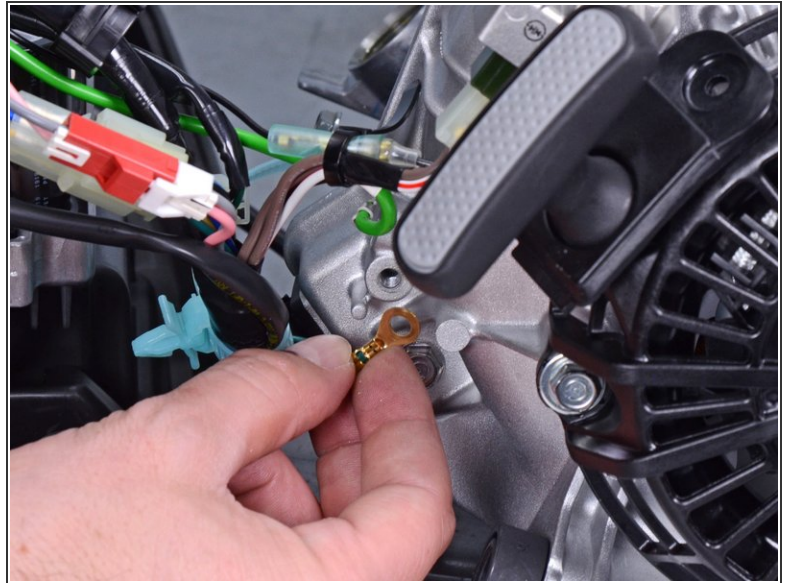
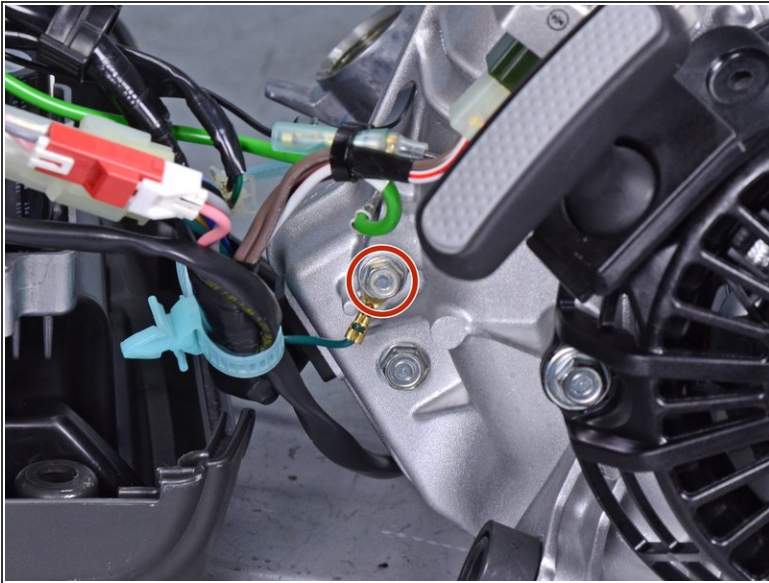
## Step 59 — Disconnect the wires



- Use an 8 mm socket to remove the bolt securing the **light green** ground wire to the engine assembly.

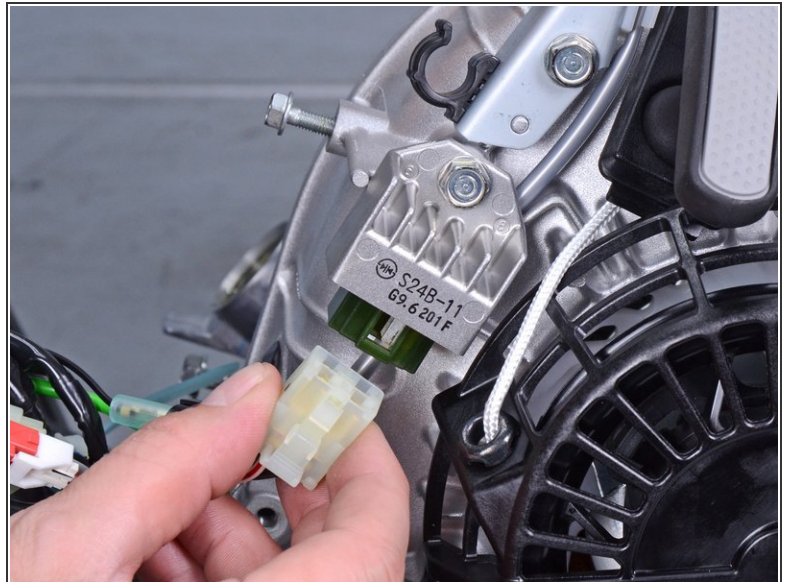
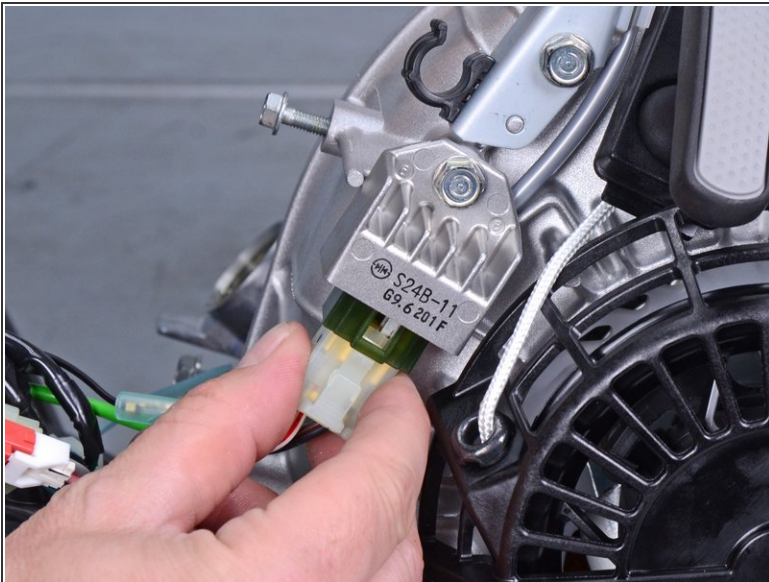


## Step 60



- Use an 8 mm socket to remove the bolt securing the **dark green** ground wire to the engine assembly.

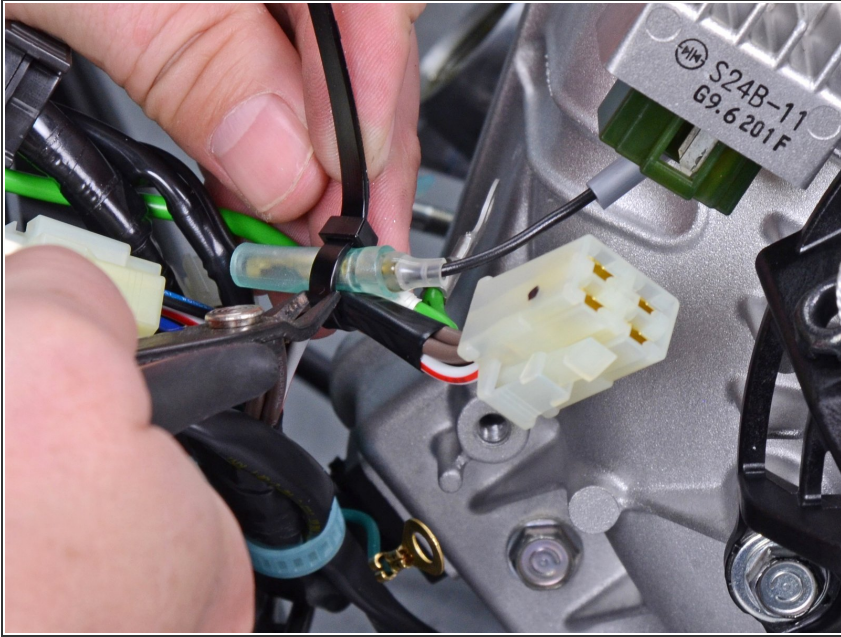
## Step 61



- Disconnect the wiring harness from the rectifier socket.

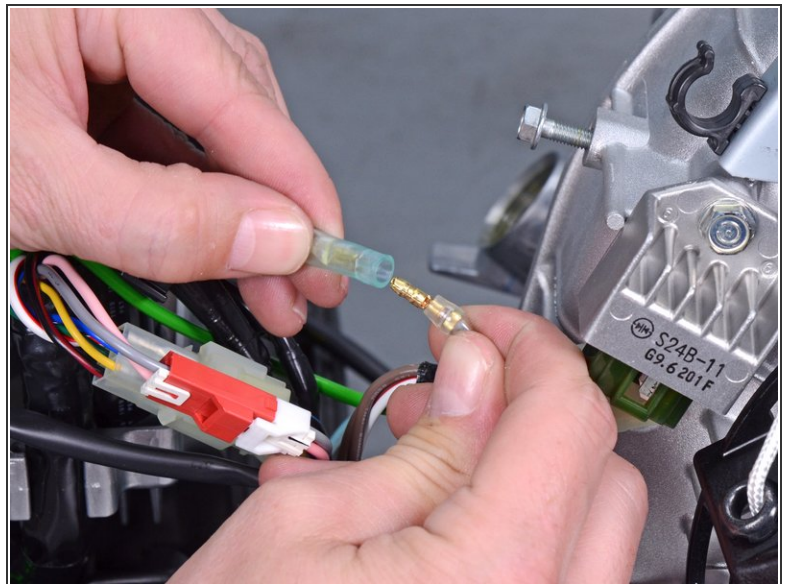
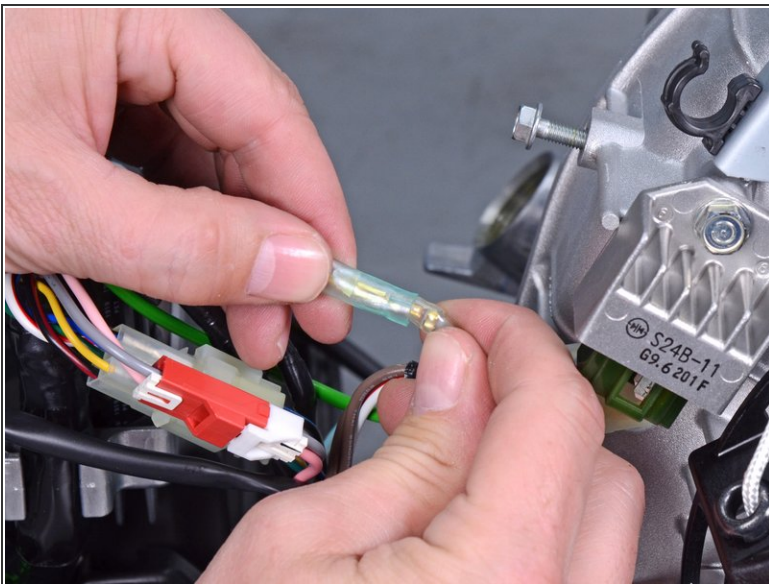


## Step 62



- Cut the zip tie securing the coil ignition wire to the harness.

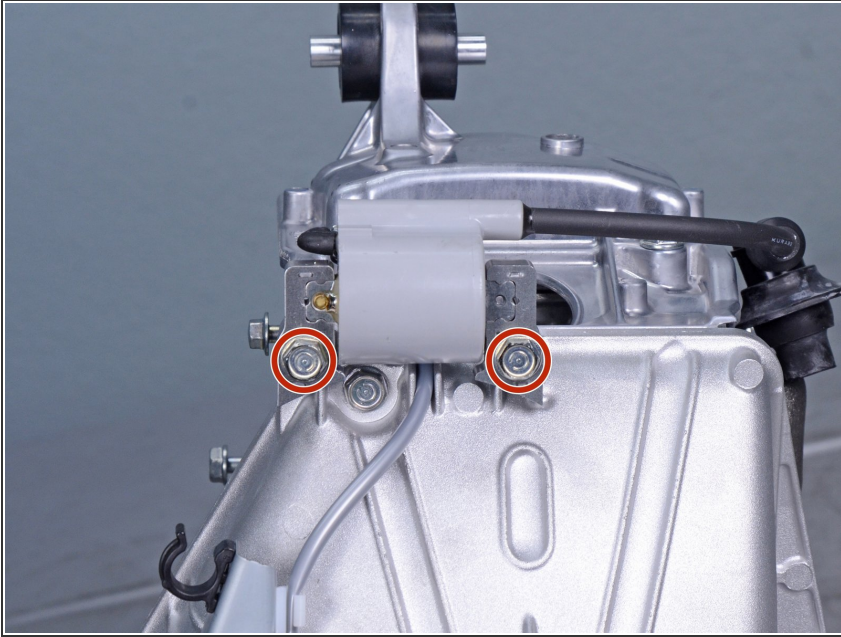
## Step 63



- Disconnect the coil ignition wire from the harness by pulling it apart from both ends.

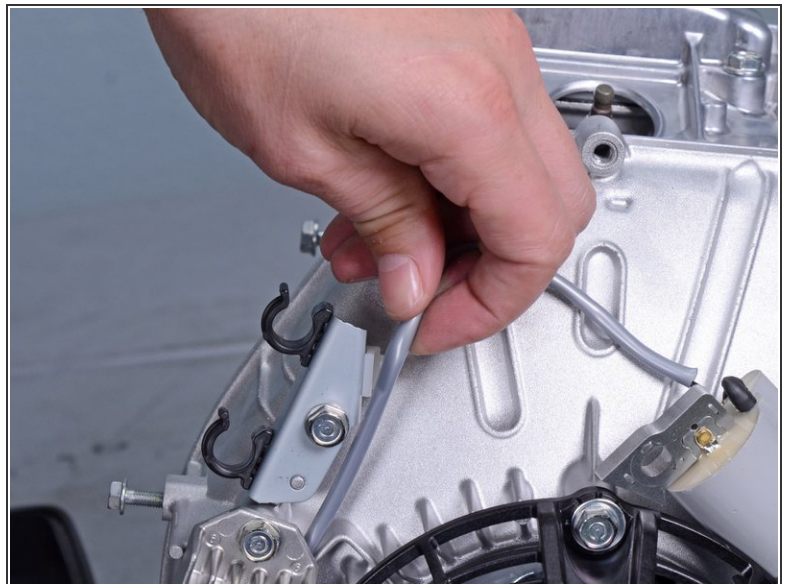
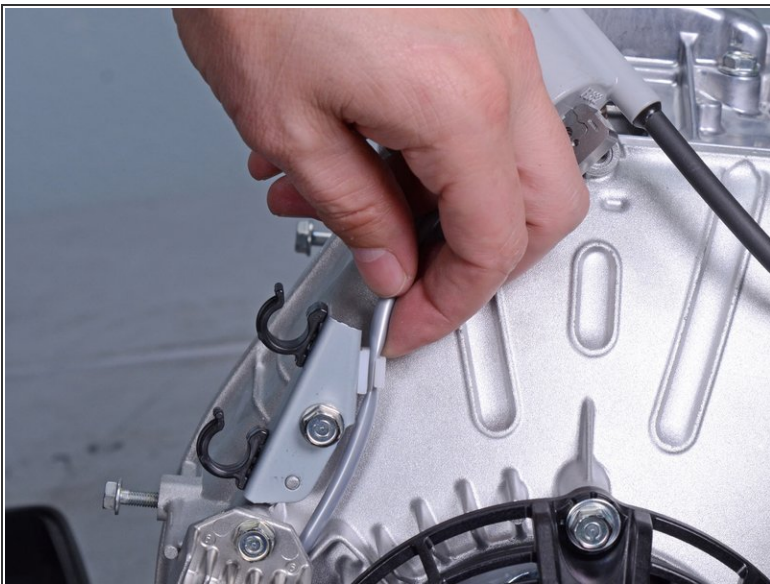


## Step 64 — Remove the coil ignition assembly



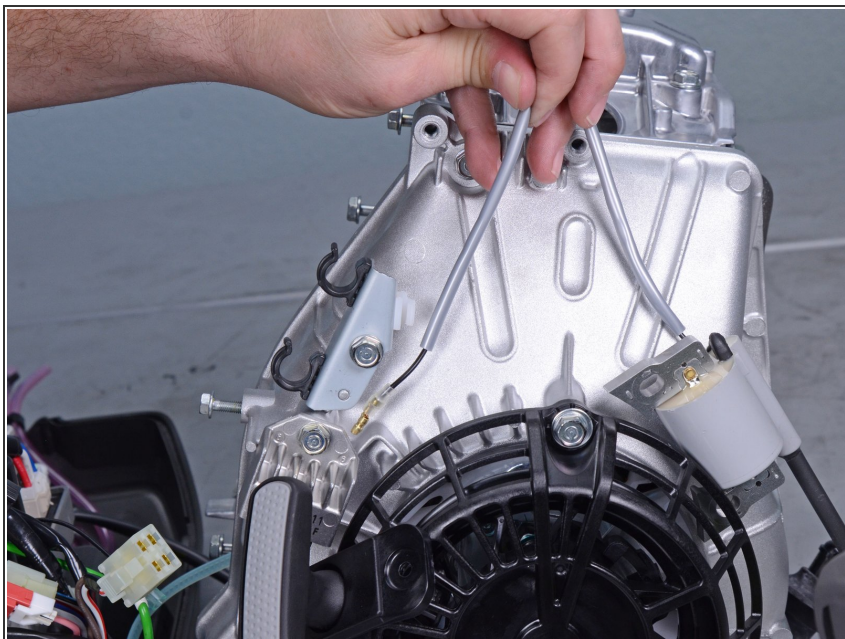
- Use a 10 mm socket to remove the two bolts securing the coil ignition assembly.

## Step 65



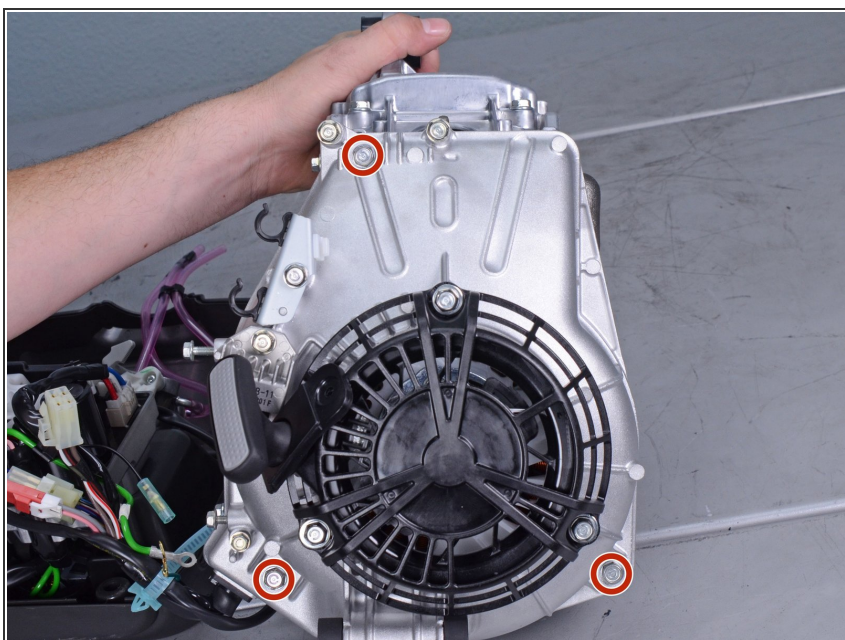
- Unroute the coil ignition wire from the engine assembly.

## Step 66



- Remove the coil ignition assembly.

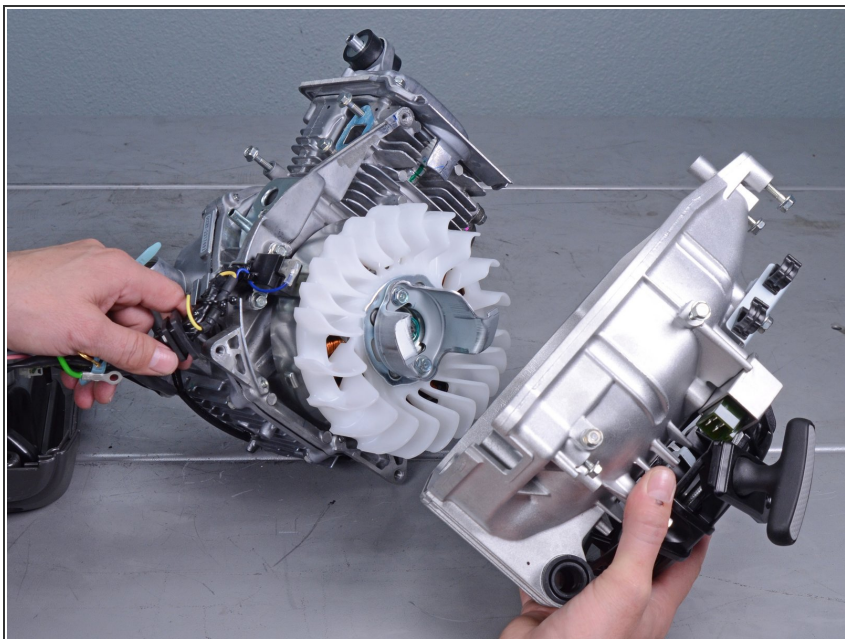
## Step 67 — Remove the fan cover



- Use a 10 mm socket to remove the three bolts securing the fan cover.

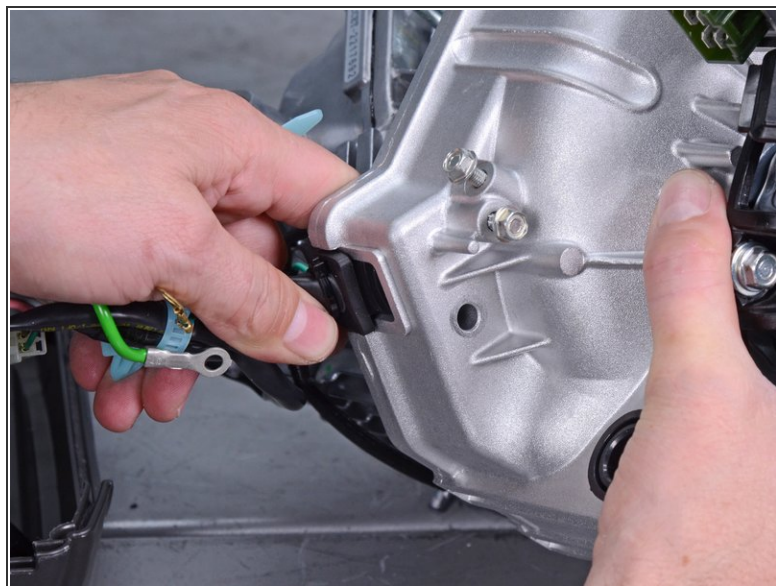
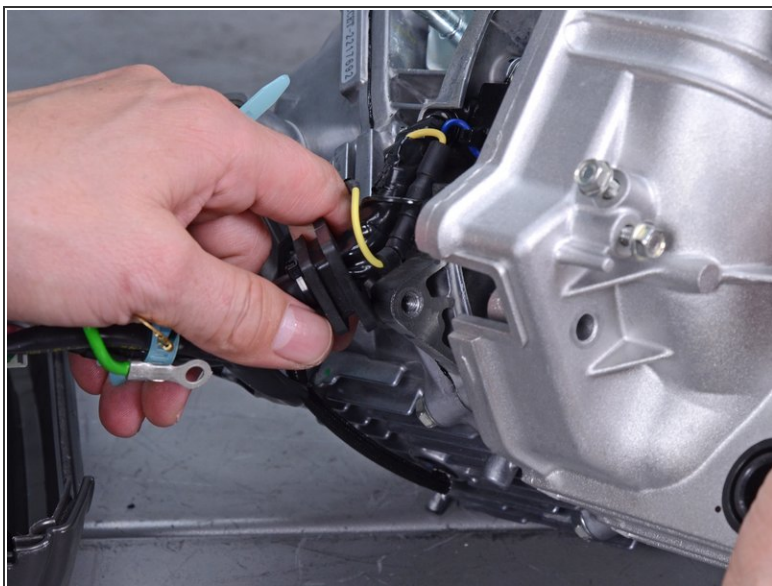


## Step 68



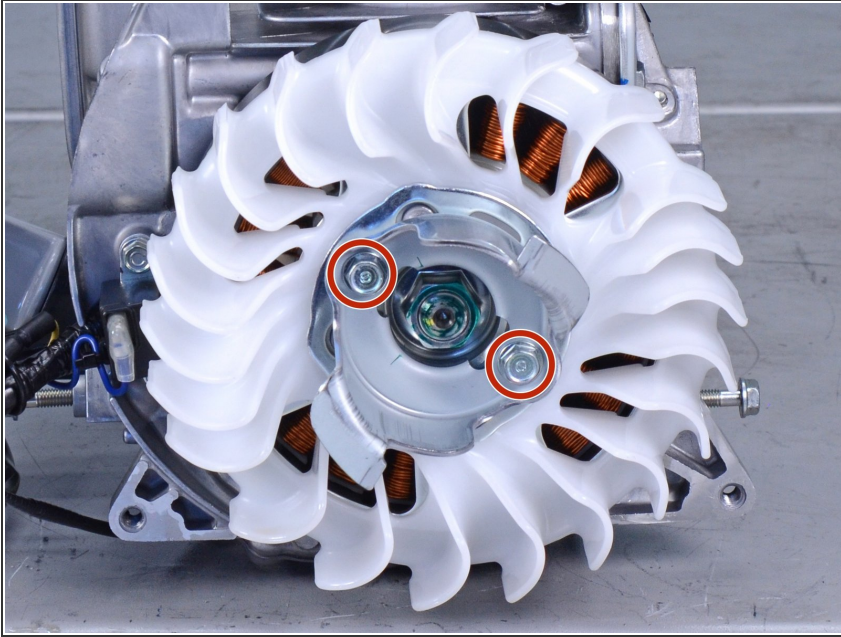
- Pull the fan cover off the engine assembly.

## Step 69 — Reassembly tip



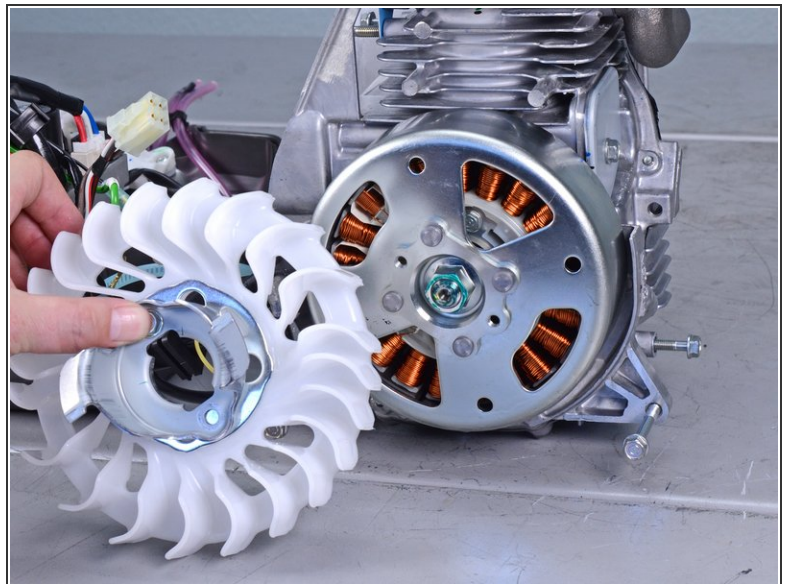
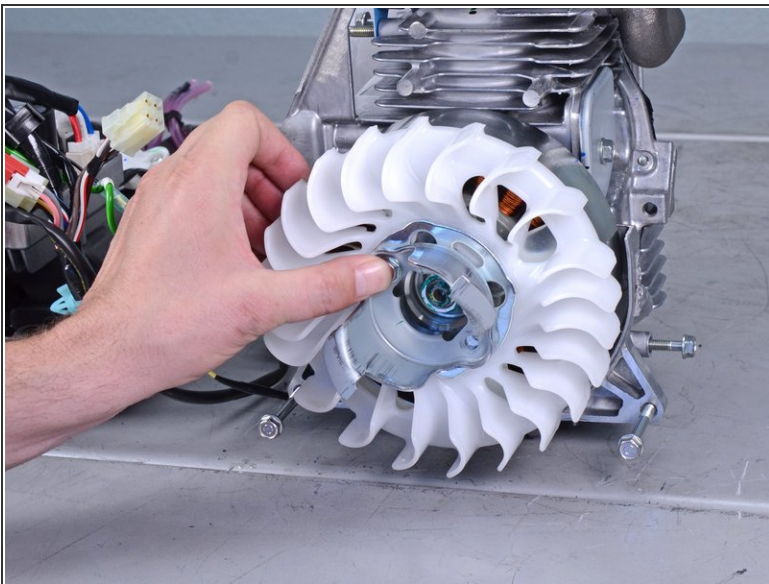
- ☑ During reassembly, make sure that the cable strain relief sits properly in its fan cover cutout.

## Step 70 — Remove the cooling fan



- Use a 10 mm socket to remove the two bolts securing the cooling fan.

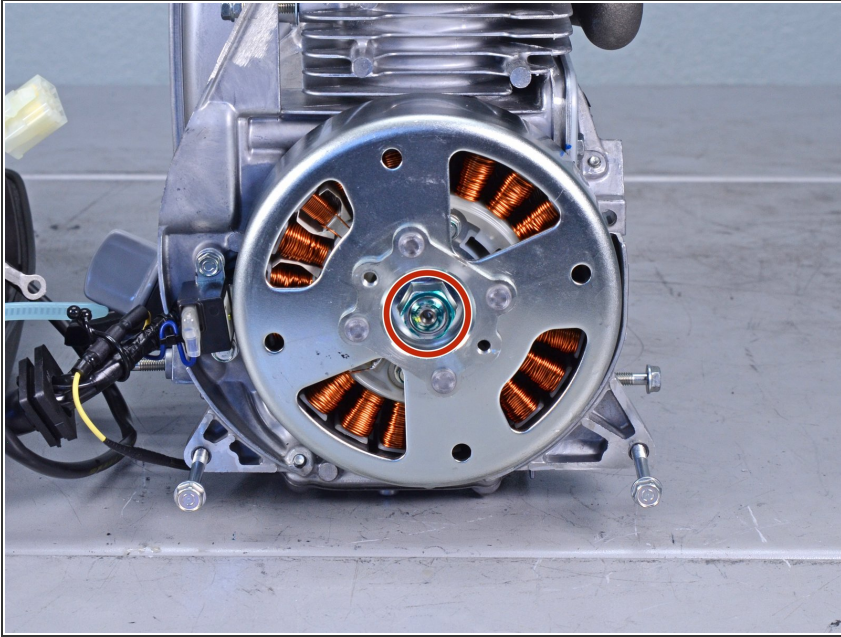
## Step 71



- Remove the cooling fan, fan set plate, and starter pulley.

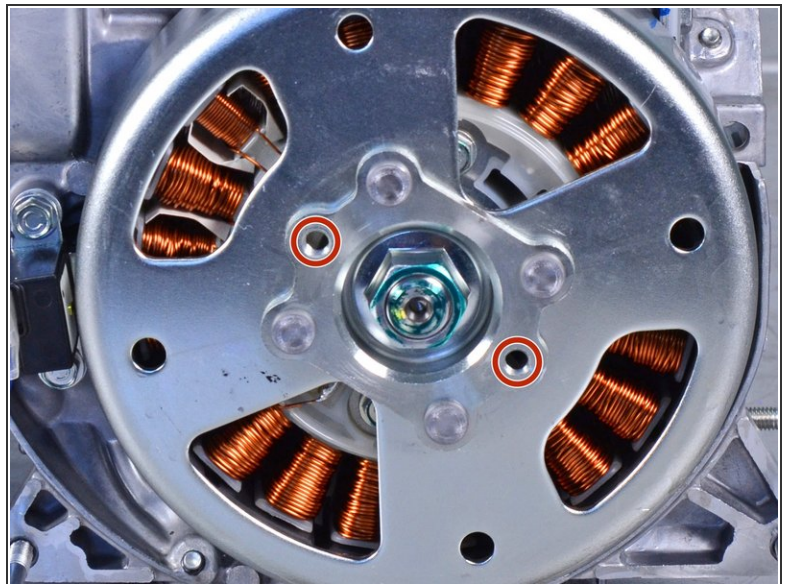
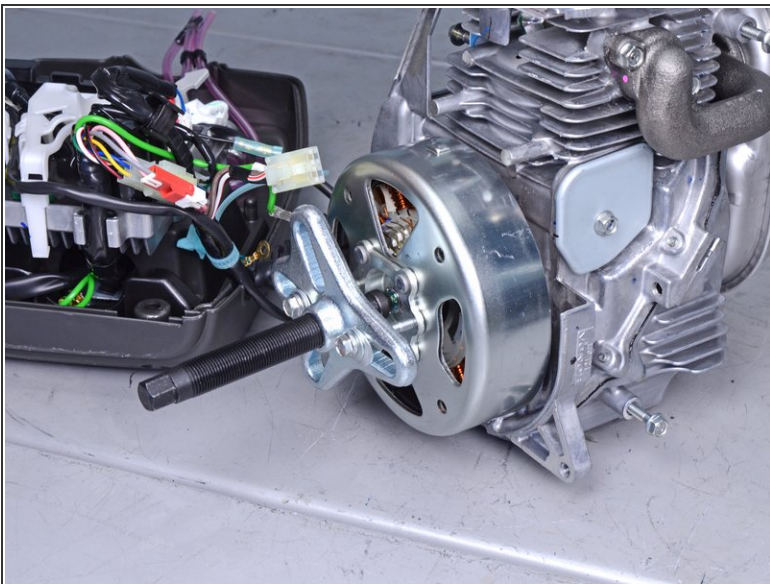


## Step 72 — Remove the rotor



- Use a 19 mm socket to remove the nut securing the rotor.
- ⓘ This nut is heavily bolted on. Use an impact wrench to loosen it, or use a breaker bar with a strap wrench to break it free.
- ★ During reassembly, tighten this nut to **66 lb-ft**.

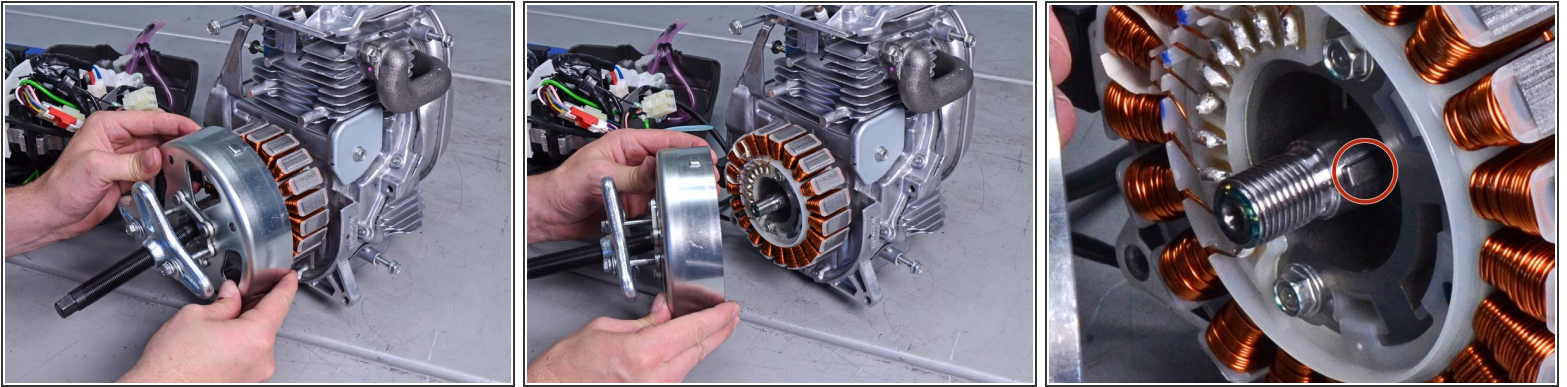
## Step 73



- Attach a flywheel puller to the rotor and attach the collar bolts to the marked holes.
- Use the flywheel puller to loosen the rotor from the axle.

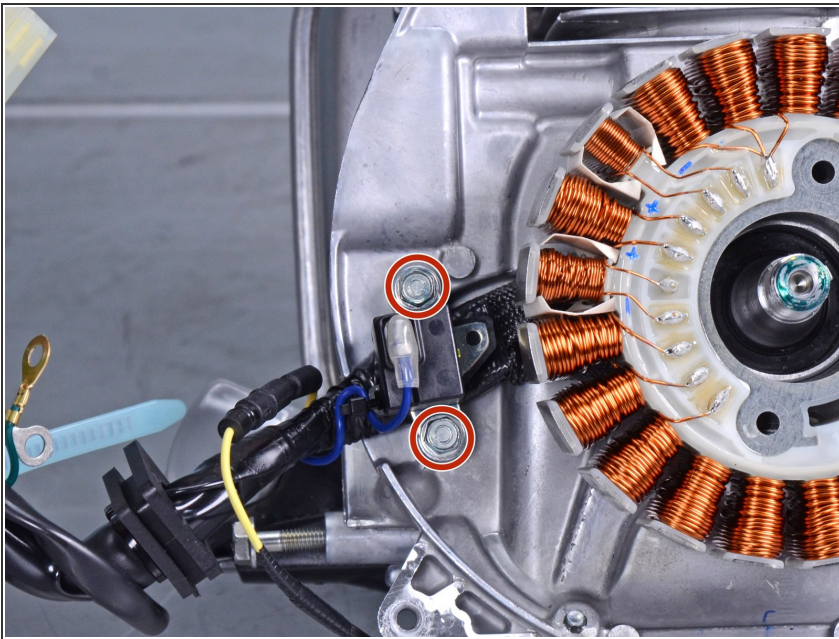


## Step 74



- Remove the rotor.
- **Reassembly tip:** When you replace the rotor, make sure the rotor aligns to the key on the shaft.

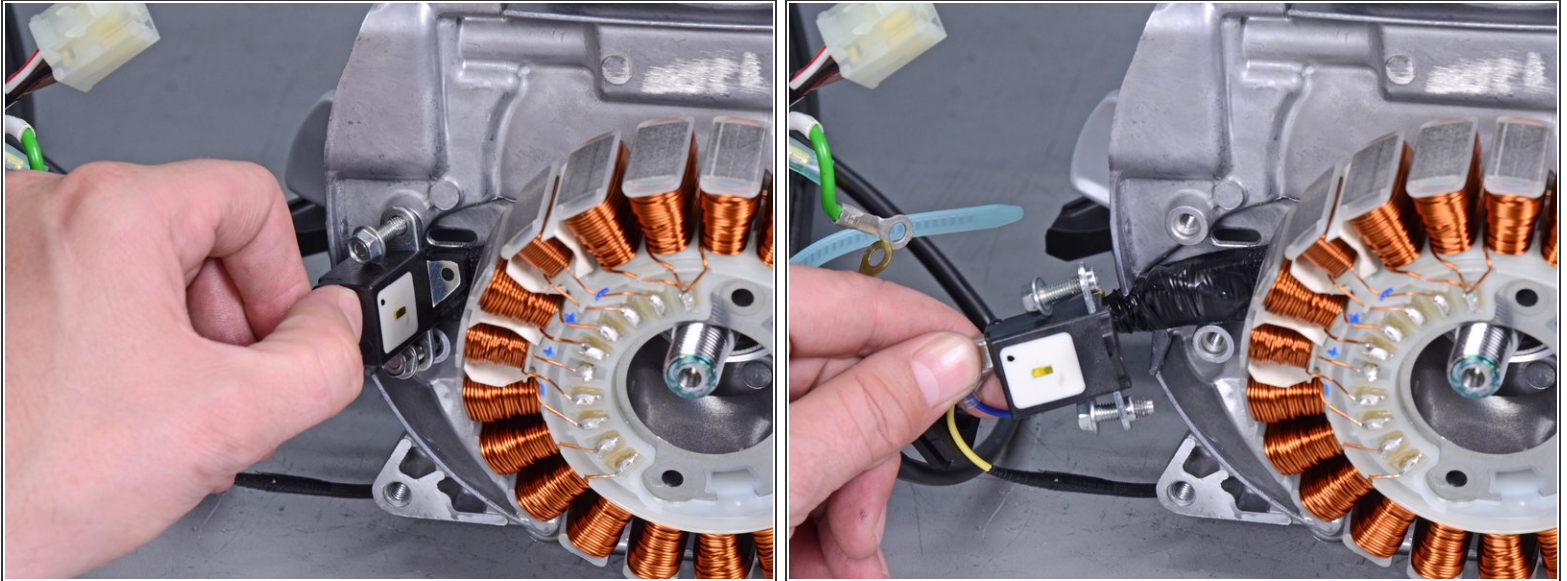
## Step 75 — Remove the pulse sensor



- Use an 8 mm socket to remove the two bolts securing the pulse sensor.



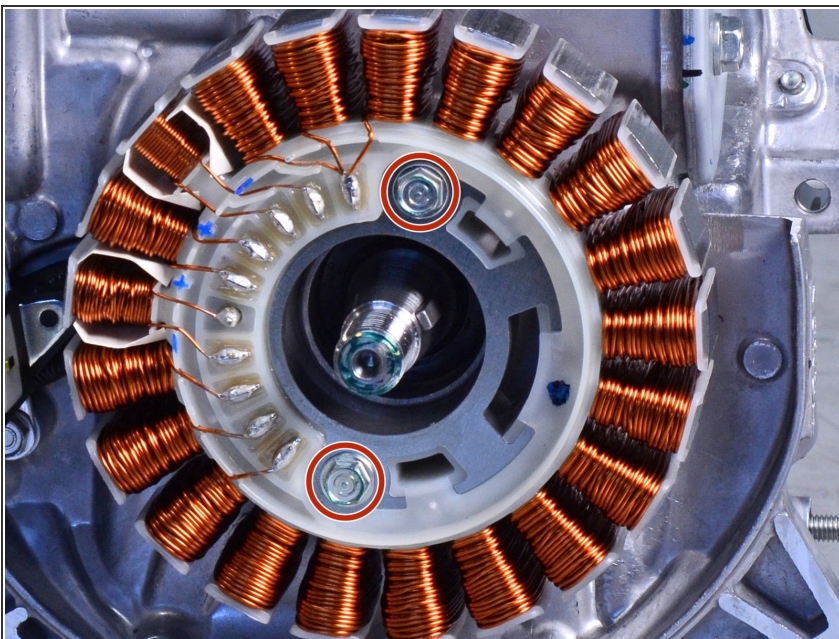
## Step 76



- Remove the pulse sensor from the engine assembly.

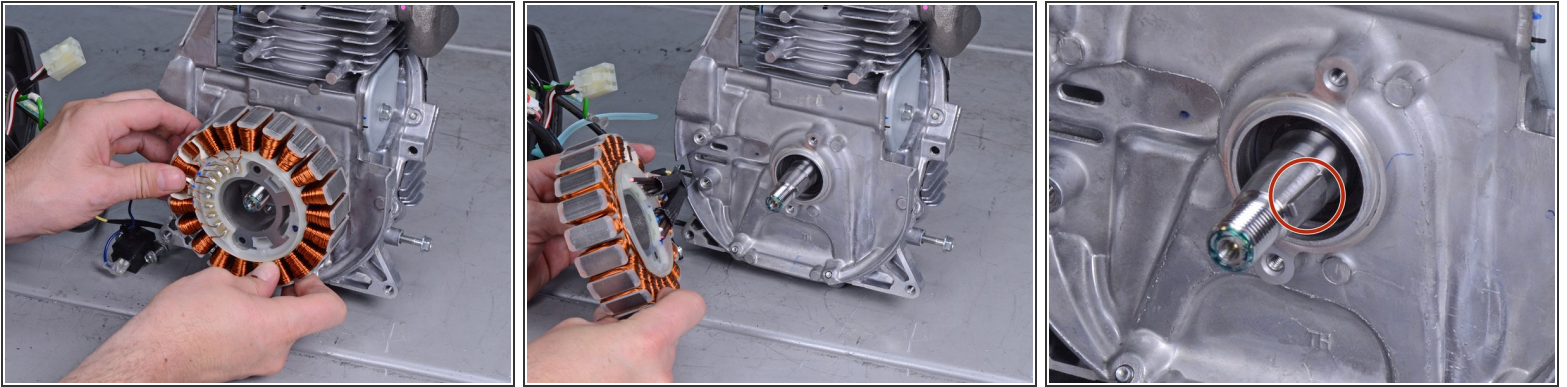
✦ **Reassembly tip:** Be sure to route the stator wiring harness underneath the pulse sensor.

## Step 77



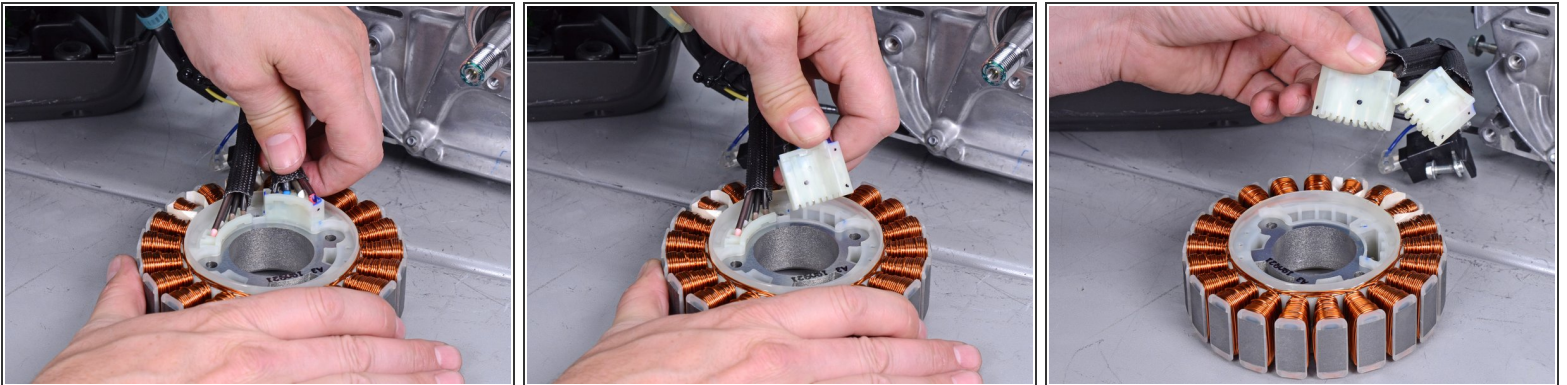
- Use an 8 mm socket to remove the two bolts securing the stator.

## Step 78



- Pull and remove the stator away from the engine assembly.
- Be careful not to lose the key on the drive shaft.

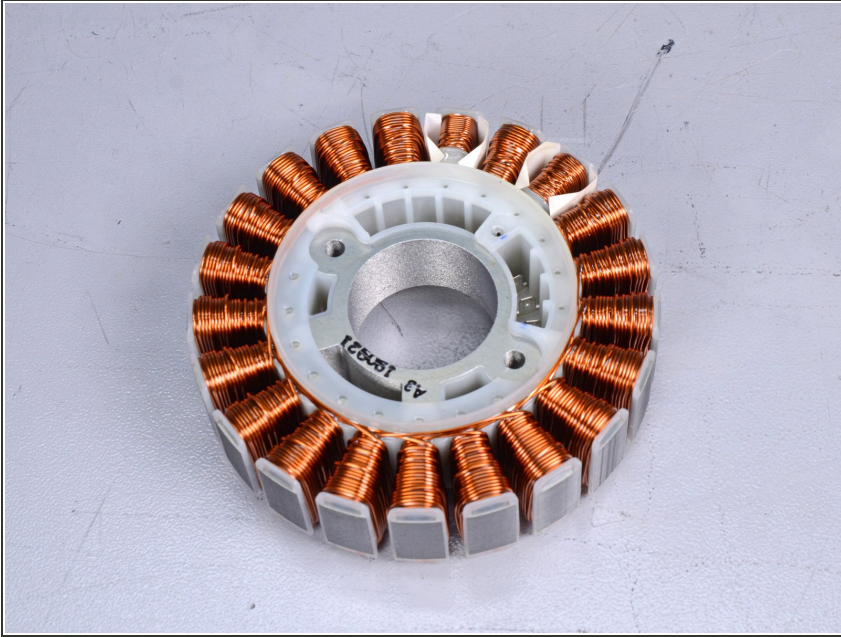
## Step 79



- Pull up and disconnect the two stator plugs from their sockets.



## Step 80



- Only the stator remains.

To reassemble your device, follow these instructions in reverse order.