



# Honda EU2200IT A2 Oil Level Switch Replacement

How to remove and replace the oil level switch for the Honda EU2200IT generator.

Written By: Arthur Shi



## INTRODUCTION

This guide shows how to remove and replace the oil level switch for the Honda EU2200IT generator. The switch is attached from within the crankcase and requires major disassembly. If you encounter problems during the process, consult the official Honda service guides.

**Drain the fuel from the fuel tank before you begin this procedure.** Any fuel remaining in the tank will spill out. Be ready to contain any spillage.

**The crankcase must be resealed with liquid sealant.** Be sure to have Threebond 1207B or equivalent liquid sealant at hand before you begin the procedure.

**You will need to refill the engine oil for this procedure.** The generator requires up to 0.46 liters of SAE 10W-30 oil.

You may find it helpful to loosely replace the bolts after you removed a part, in order to keep track of the bolts and to keep the screw holes clean.



### TOOLS:

- [Flathead Screwdriver](#) (1)
- [Phillips #2 Screwdriver](#) (1)
- [8 mm socket](#) (1)
- [10mm Socket](#) (1)
- [Socket Wrench](#) (1)
- [Large Needle Nose Pliers](#) (1)
- [Rubber Mallet](#) (1)
- [Pin Punch](#) (1)
- [Oil Drain Pan](#) (1)




### PARTS:

- [Honda SWITCH ASSY., OIL LEVEL 35480-Z0D-D02](#) (1)
- [Honda GASKET, MUFFLER 18382-ZC0-000](#) (1)
- [Honda GASKET, INSULATOR 16212-Z0D-D00](#) (1)
- [Honda GASKET, CARBURETOR 16221-ZG0-801](#) (1)
- [Threebond 1207B Liquid Sealant](#) (1)
- [Motor Oil 1qt 10W-30](#) (1)

## Step 1 — Honda EU2200IT A2 Safety Precautions



 Before you begin, make sure the generator is switched off and the generator is cool to the touch.

## Step 2 — Disconnect the spark plug



- Lift and remove the spark plug cover.

### Step 3



- Grab the plastic housing at the end of the spark plug wire.
- Pull firmly to disconnect the wire from the spark plug.

### Step 4 — Remove the maintenance cover



- Use a Phillips #2 screwdriver to loosen the screw holding the maintenance cover in place.

## Step 5



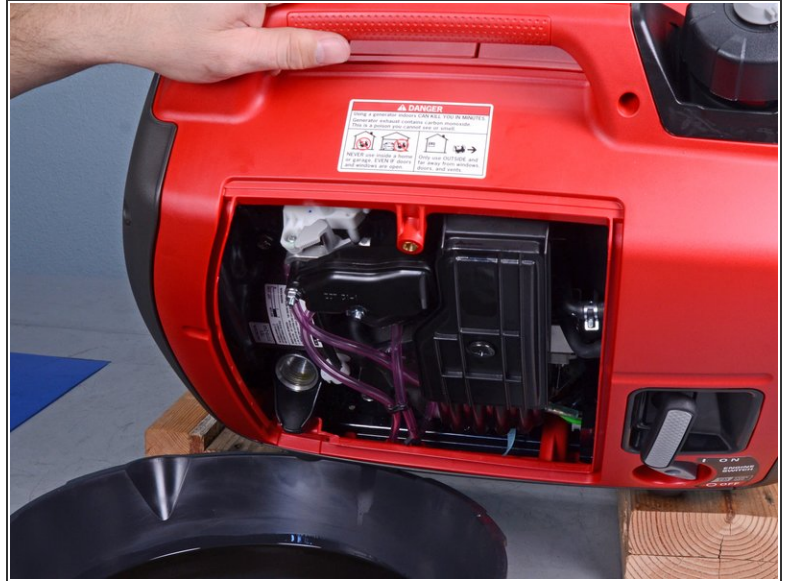
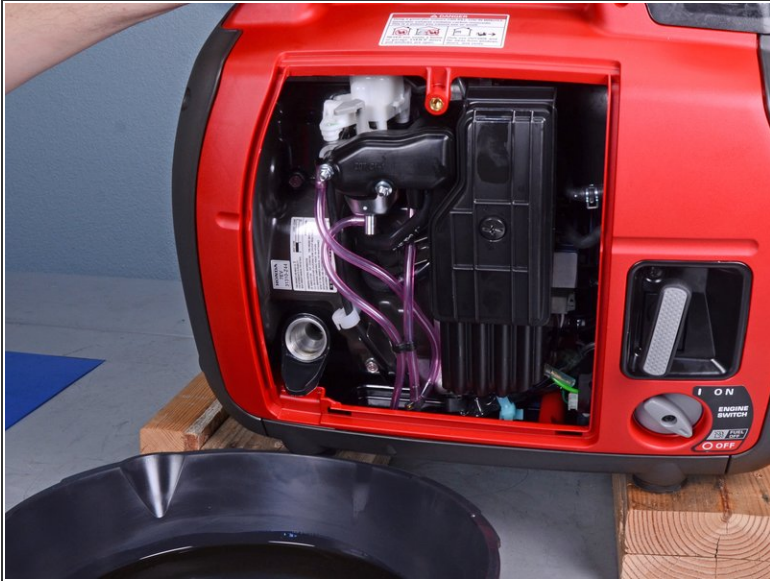
- Swing the top of the maintenance cover out.
- Remove the maintenance cover.

## Step 6 — Drain the engine oil



- Unscrew and remove the oil filler cap.

## Step 7



- Place an oil pan below the fill port to catch the engine oil.
- Carefully tilt the generator towards the oil pan to drain the oil.

## Step 8



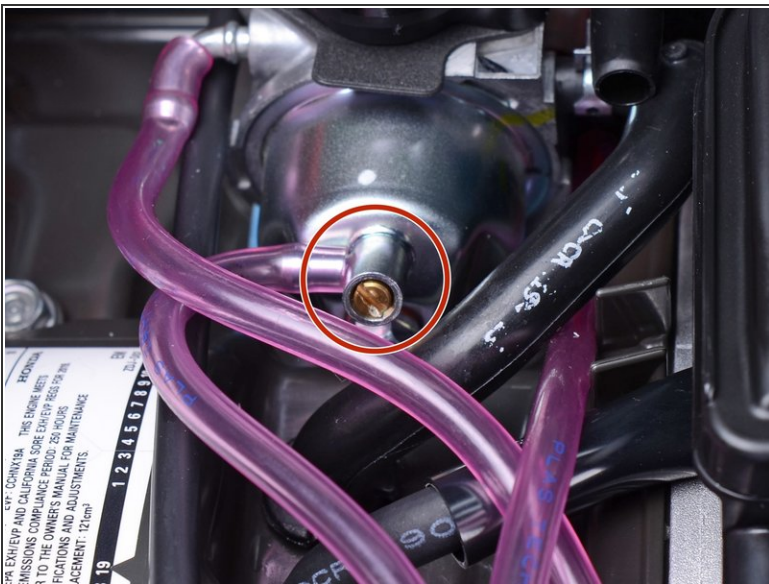
- ⚠ During reassembly, be sure to refill the engine oil:
- ⚠ If you recently resealed the crankcase cover with liquid sealant, wait at least 20 minutes before adding oil.
- ℹ Use SAE 10W-30 oil, up to 0.46 US quarts.
- Add oil until the dipstick is almost completely submerged.

## Step 9 — Drain the carburetor fuel bowl



- Place a container below the drain tube to catch the excess fuel.

## Step 10



- The carburetor drain screw is located at the bottom of the carburetor.
- Use a flathead screwdriver to loosen the fuel drain screw until fuel begins to drain out of the carburetor.
- Once you drain the fuel bowl, re-tighten the fuel drain screw.

This document was generated on 2020-11-14 08:56:46 AM (MST).

## Step 11 — Back Cover



- Remove the four Phillips screws securing the back cover.

## Step 12



- Remove the back cover.

## Step 13 — Loosen the front cover



- Remove the four screws securing the front cover:
  - Two Phillips screws
  - Two Phillips screws (one on each side)

## Step 14



- Swing the top edge of the front cover away from the generator.
  - Pull the front cover away slightly away.
- ⚠ The front cover still has many wires connected to it. Be careful not to strain any wires.

## Step 15 — Remove the left cover



- Remove the lower gray plates from both sides of the generator.
- ☑ During reassembly, be sure to reinstall the gray plate with the air vent cutout onto the right (access-side) cover.

## Step 16



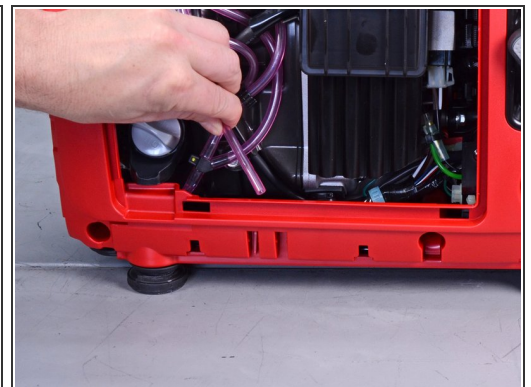
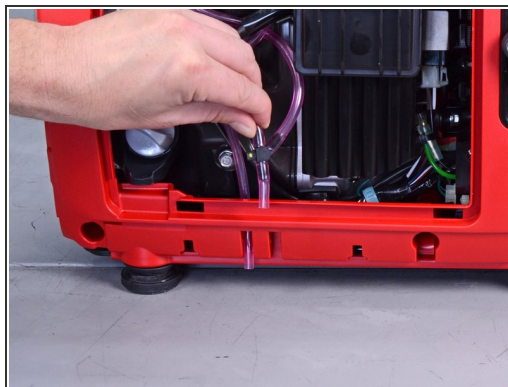
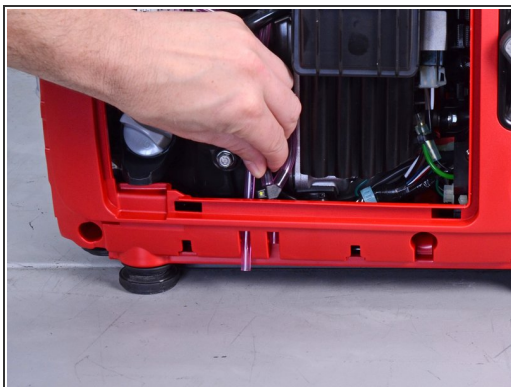
- Remove the fasteners securing the left (non-access) cover:
  - Two Phillips screws
  - Two 10 mm bolts

## Step 17



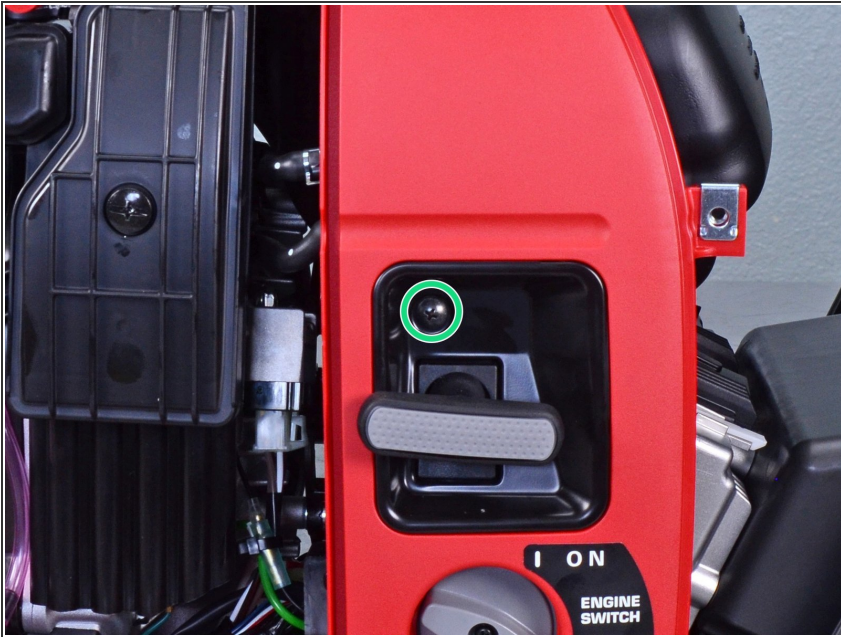
- Remove the left (non-access) cover.

## Step 18 — Remove the right cover



- Slide the vent and drain tubes out of their cover ports along the bottom of the right cover.

## Step 19



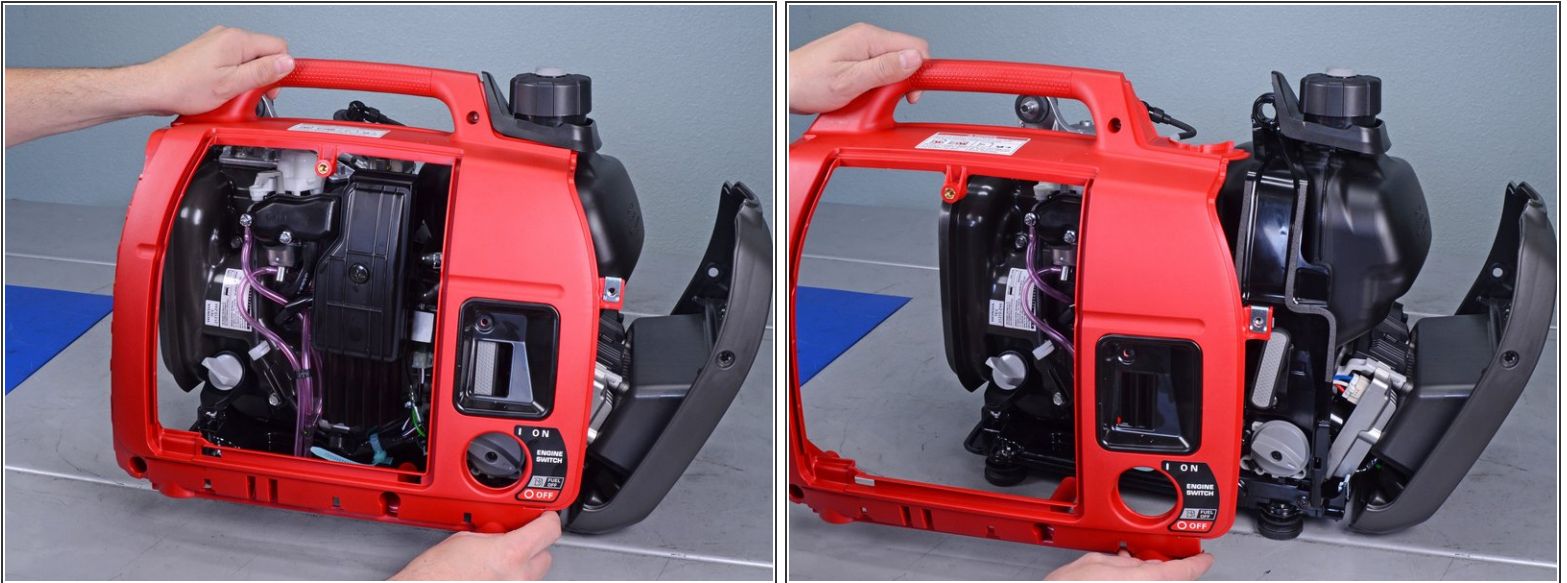
- Remove the Phillips screw securing the starter rope port.

## Step 20



- Thread the starter rope handle through the port's cutout.

## Step 21



- Remove the right (access-side) cover.

## Step 22 — Fuel Tank



**i** If you are replacing only the fuel tank, you can skip the next six steps.

- Use a screwdriver to pry and loosen the diaphragm tube from the fuel pump.
- Disconnect the diaphragm tube from the fuel pump.


## Step 23



- Use a pair of pliers to squeeze and slide the spring clip off the fuel pump port.

## Step 24



 Residual fuel may leak out of this hose. Be ready to contain any spillage.

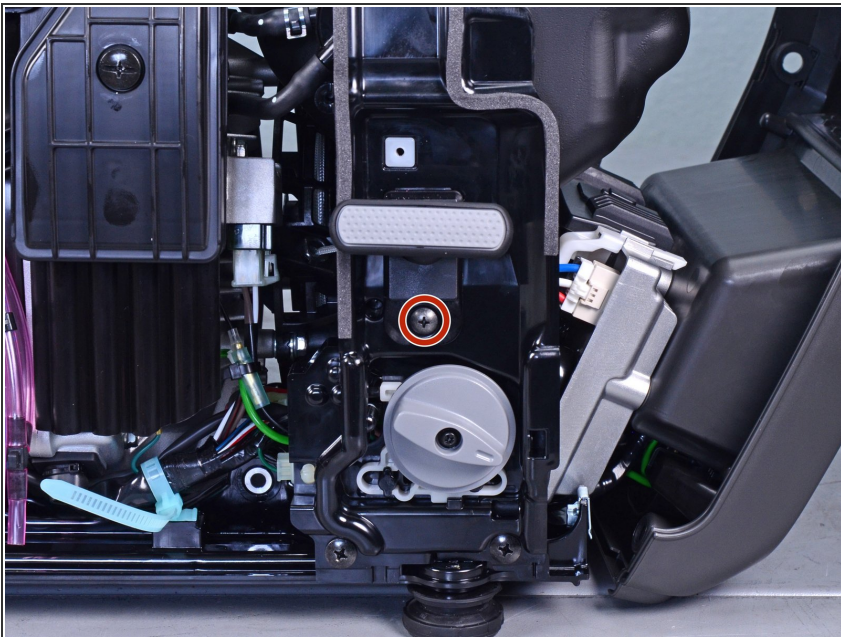
- Disconnect the fuel hose from the fuel pump.

## Step 25



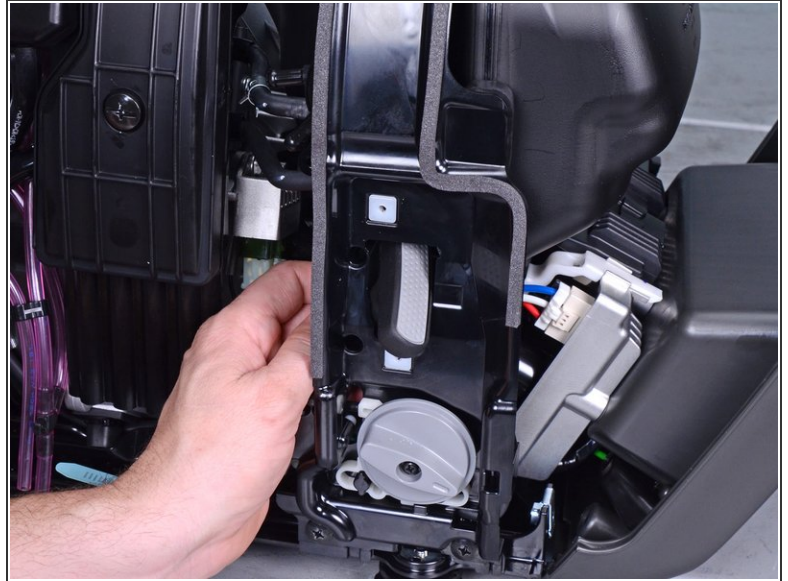
- Pull and disconnect the engine stop switch connector from its socket.

## Step 26



- Remove the Phillips screw securing the starter rope guide.


## Step 27



- Feed the starter rope handle and guide through the panel cutout.

## Step 28 — Remove the fuel tank



 Any residual fuel in the tank will leak. Be ready to contain any spillage.

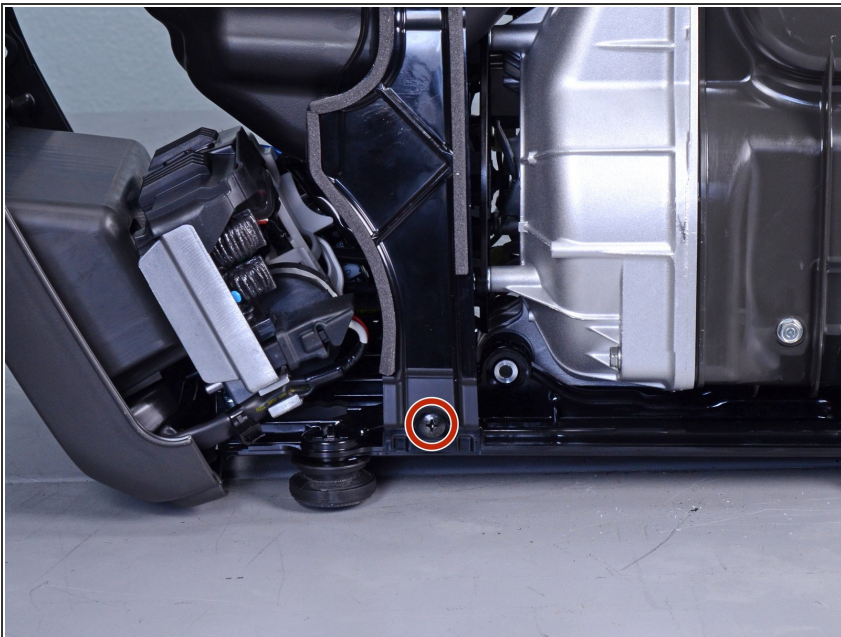
- Use a pair of pliers to squeeze and slide the spring clip off the fuel tank port.

## Step 29



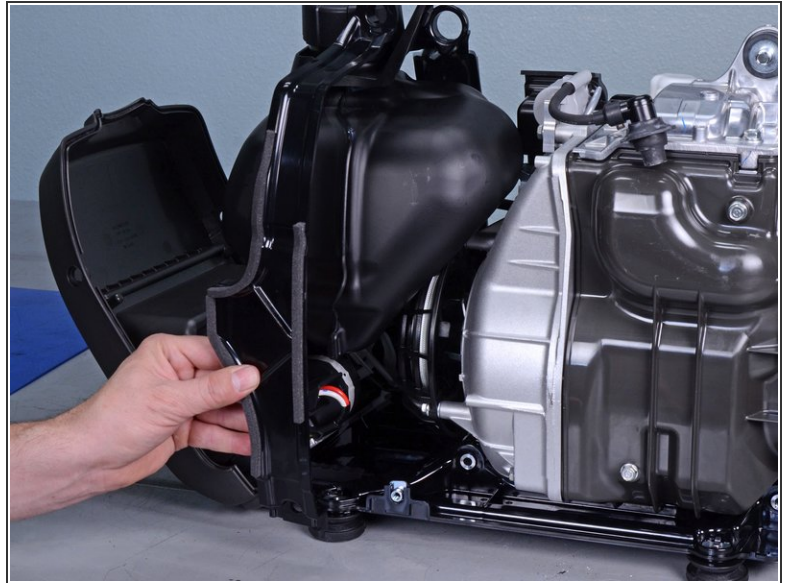
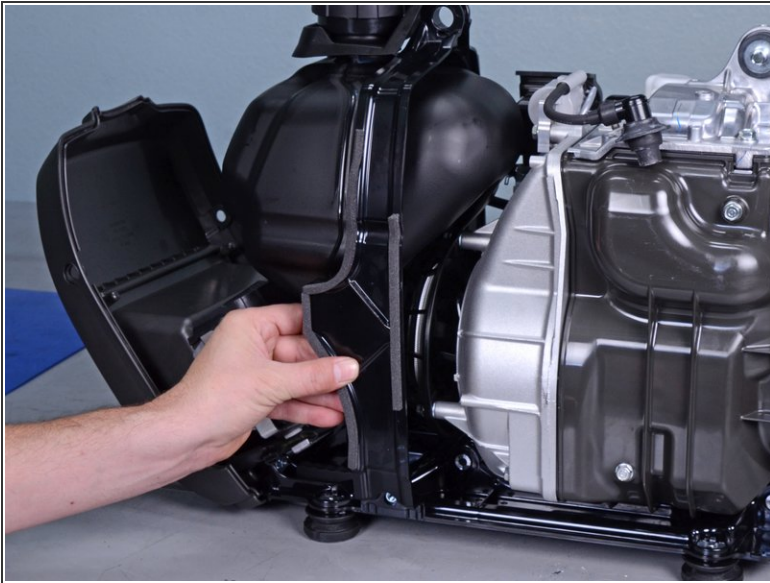
- Disconnect the fuel line and filter from the fuel tank.

## Step 30



- Remove the Phillips screw securing the left (non-access) frame assembly.

## Step 31



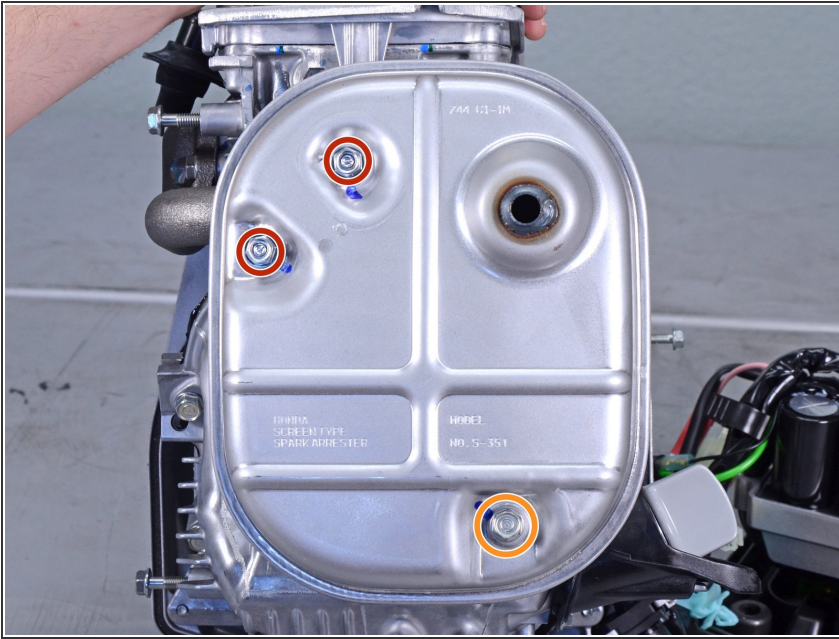
- Remove the left (non-access) frame assembly.

## Step 32



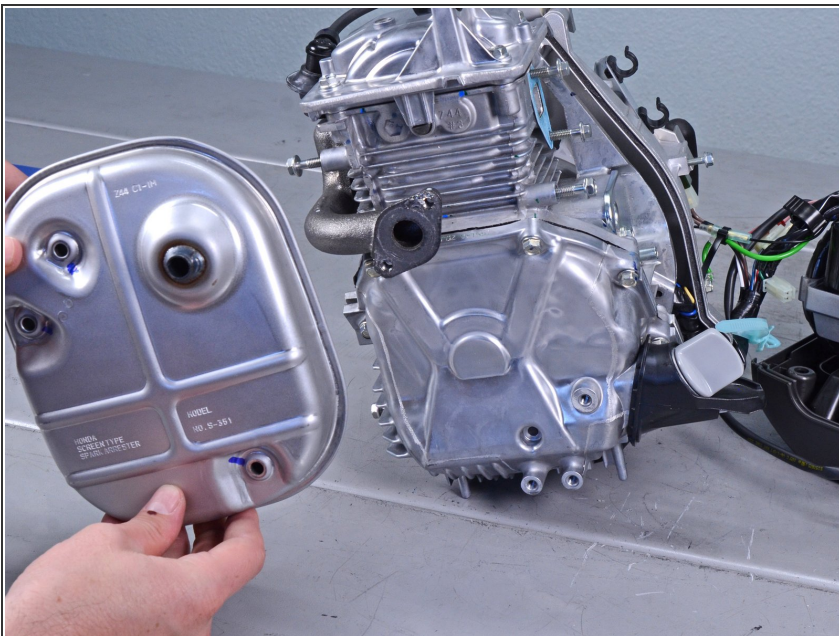
- Lift and remove the fuel tank.

## Step 33 — Remove the muffler



- Use a 10 mm socket to remove the three bolts securing the muffler:
  - Two 50 mm-long bolts
  - One 75 mm-long bolt
- ☑ During reassembly, these bolts should be tightened to **8.7 lb-ft**.

## Step 34



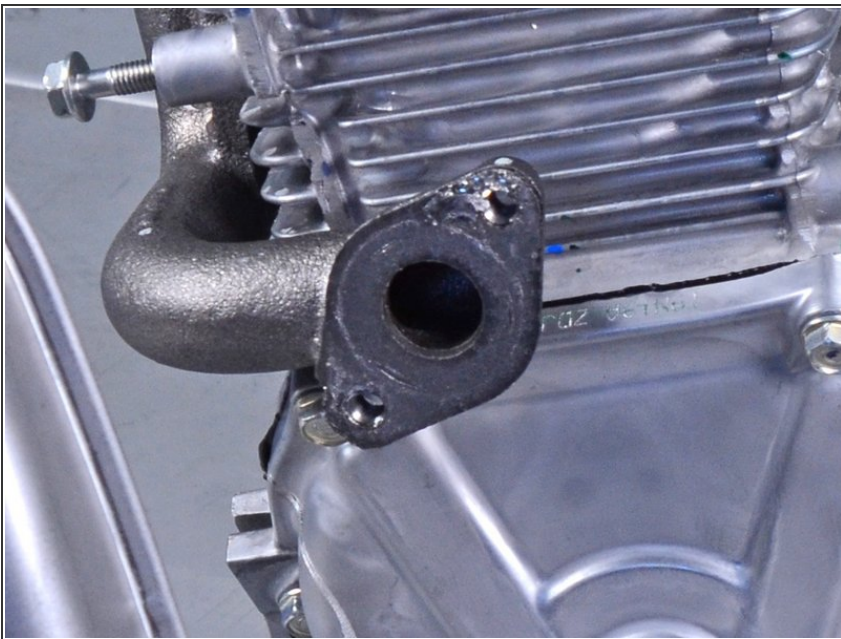
- Remove the muffler.

## Step 35



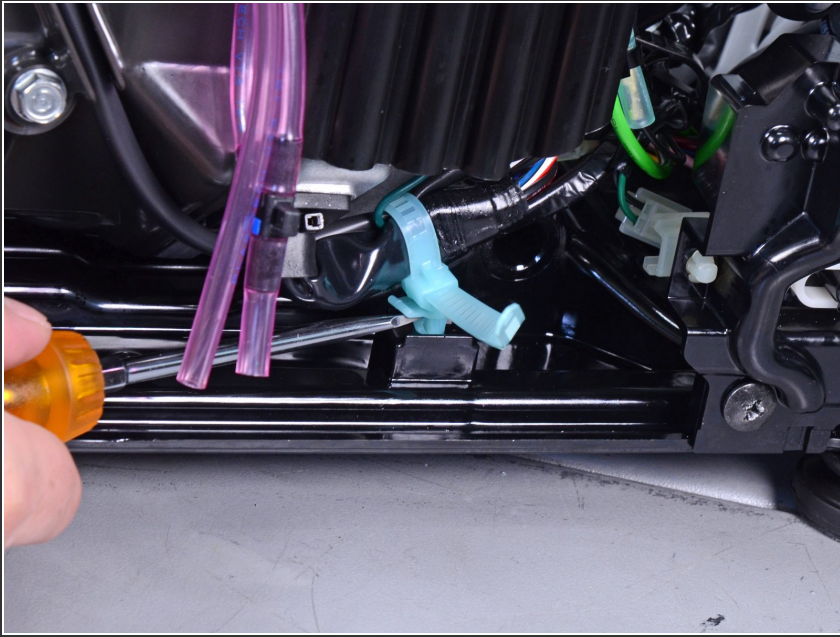
- Use a wire brush to clean any deposits off the spark arrester.

## Step 36



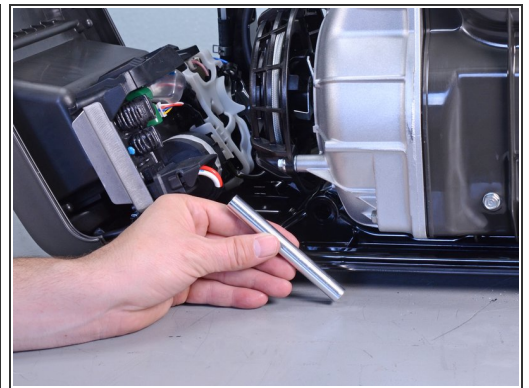
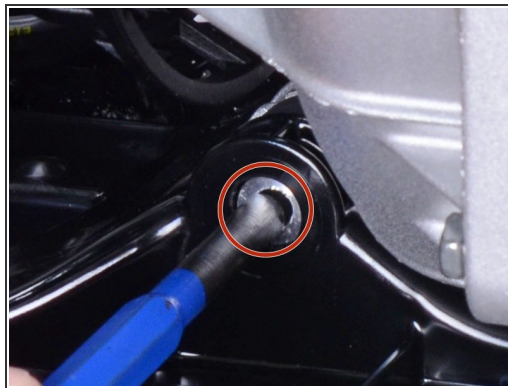
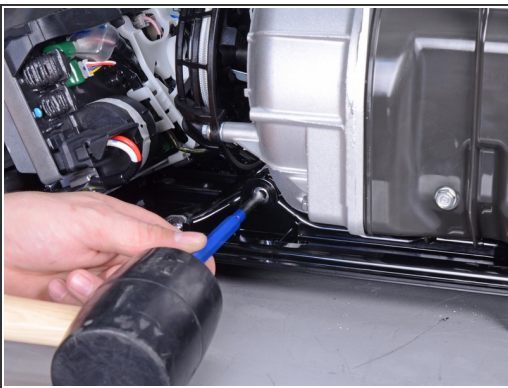
- ★ During reassembly, replace the muffler gasket if it shows signs of wear.

## Step 37 — Remove the under-cover



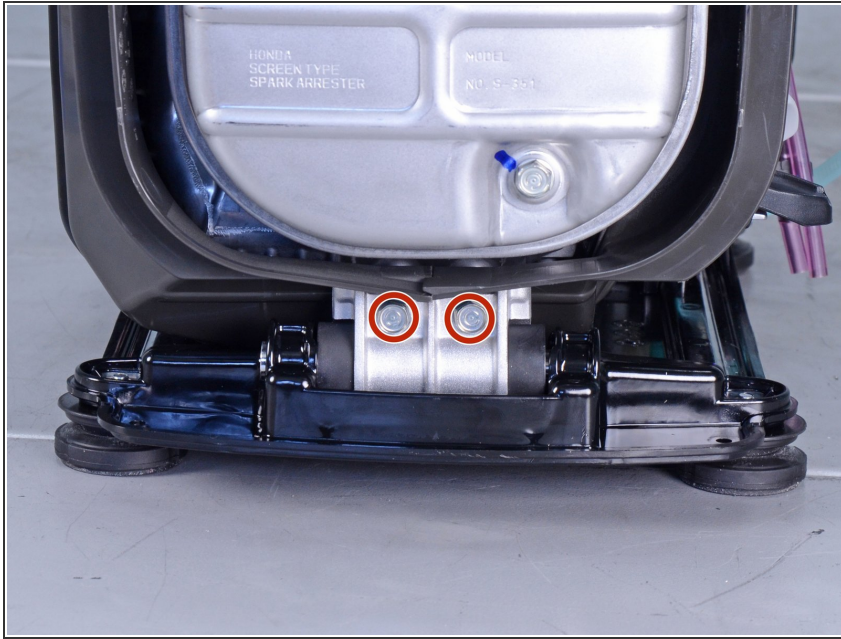
- Use a flathead screwdriver to pry up the blue wire harness from the under-cover.

## Step 38



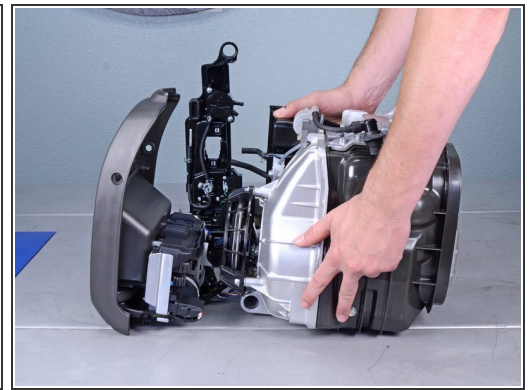
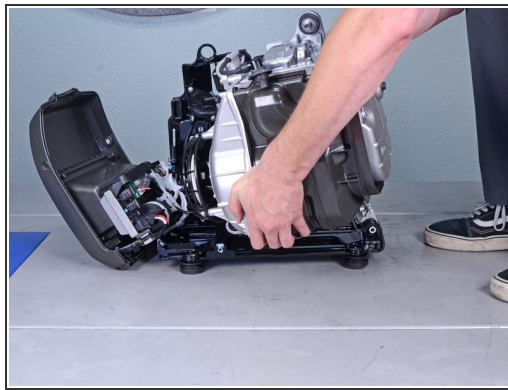
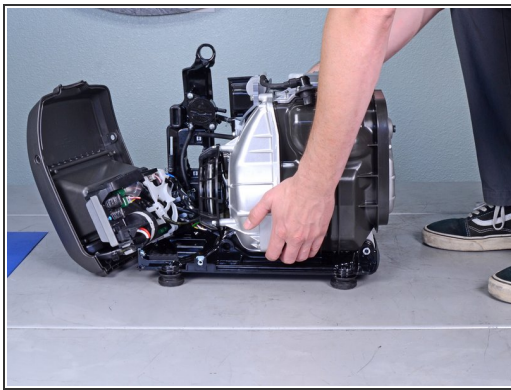
- Use a mallet and punch to tap out the front collar (closest to the electrical panel) securing the motor assembly to the under-cover.


## Step 39



- Use a 10 mm socket to remove the two bolts securing the motor rear to the under-cover.

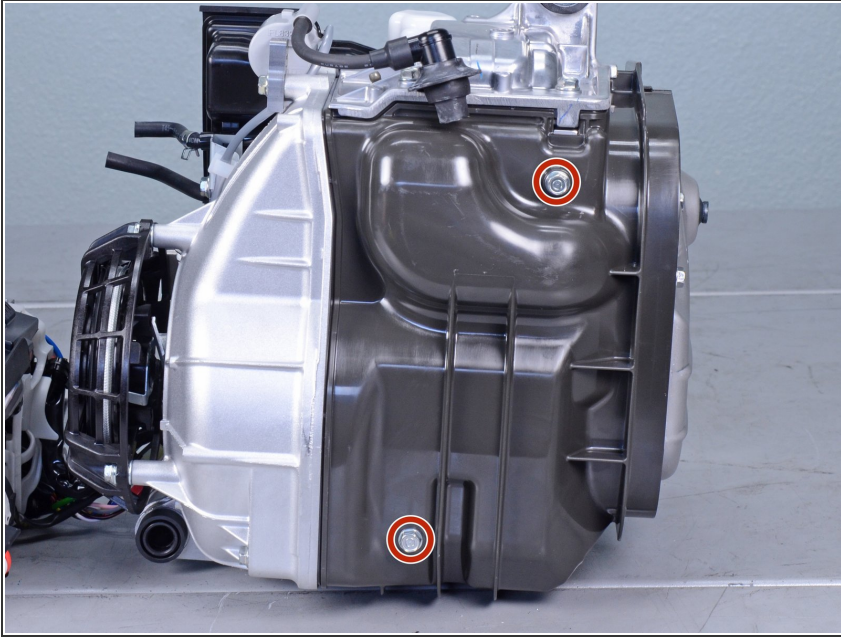
## Step 40



 The motor assembly is heavy. Follow safe lifting practices when you lift the assembly.

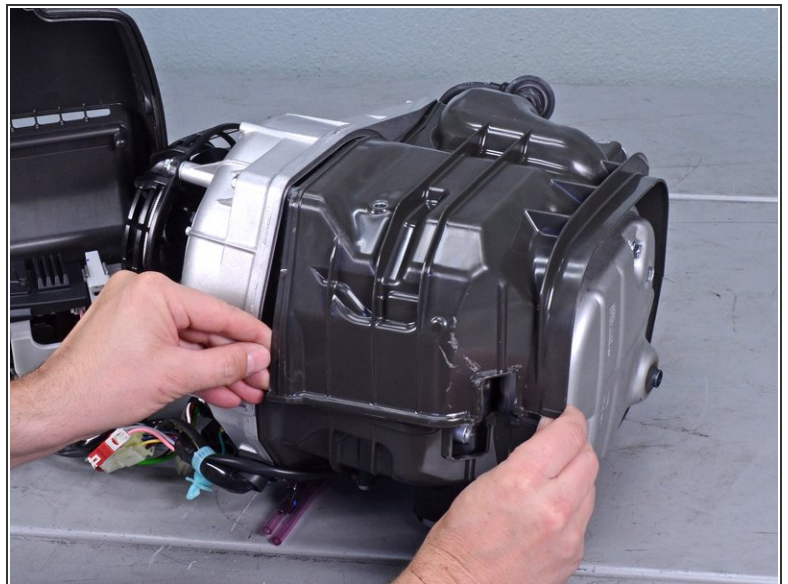
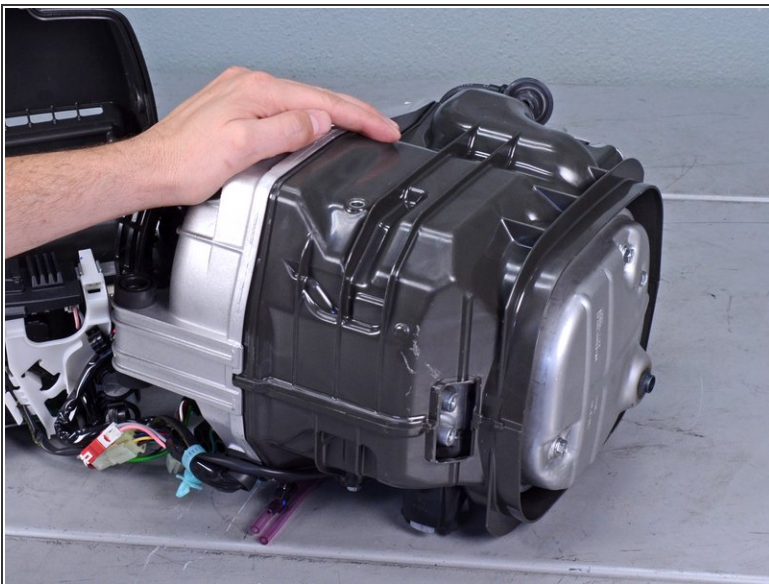
- Lift the motor assembly off the under-cover and set it aside.

## Step 41 — Remove the left shroud



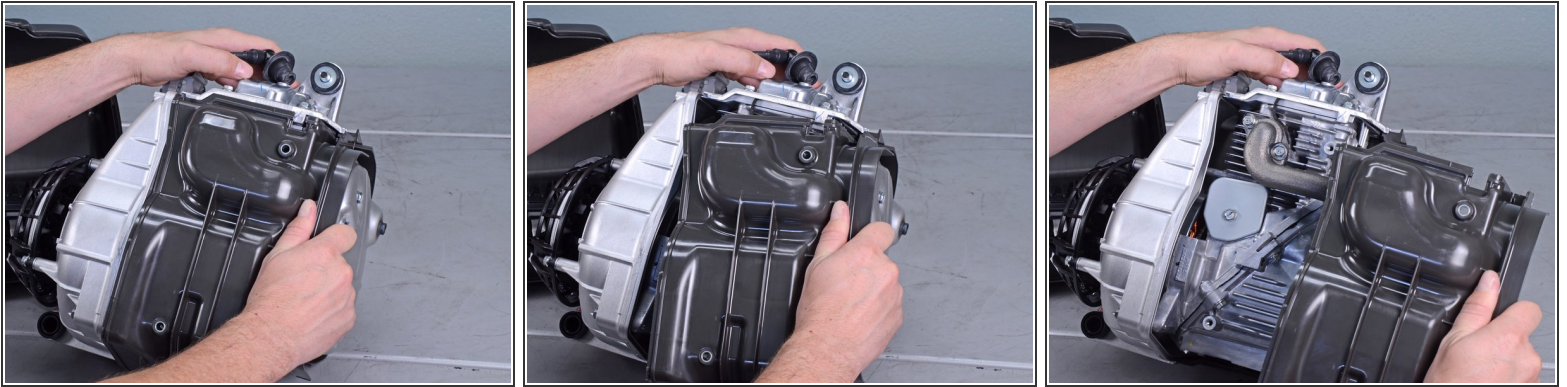
- Use a 10 mm socket to remove the two bolts securing the left shroud.

## Step 42



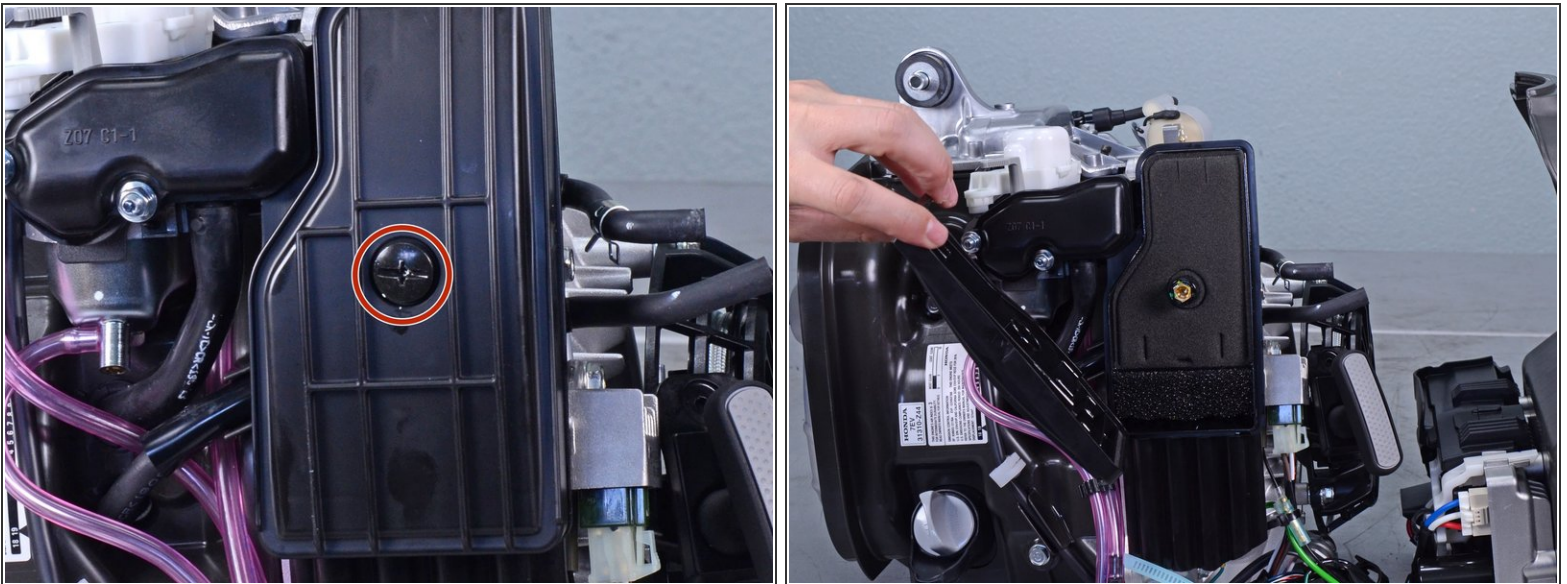
- Begin separating the left shroud from the engine assembly by pulling it away from the assembly.
  - ⓘ The shroud sits in a groove on the engine assembly and may take some force to pull out.

## Step 43



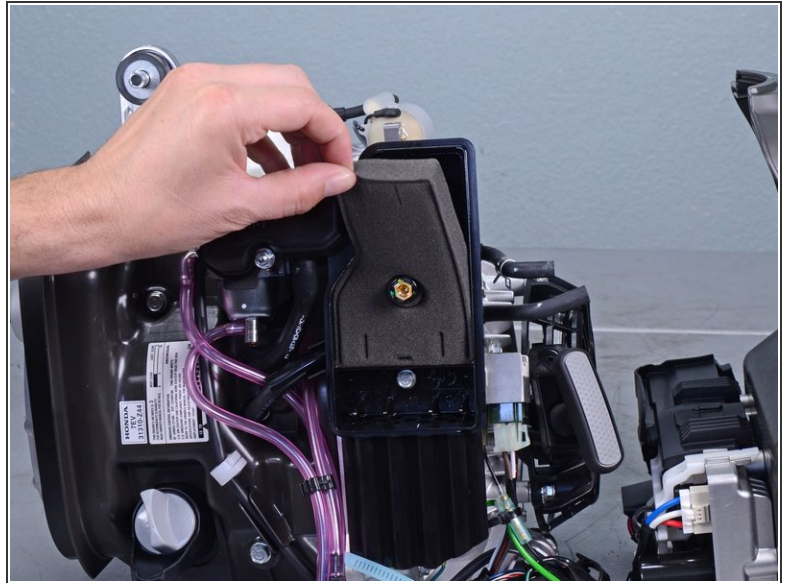
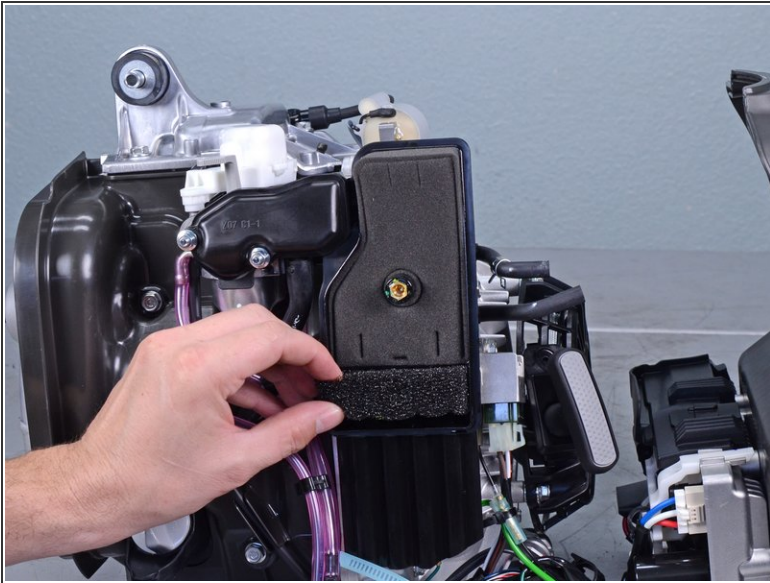
- Pull along the edge of the shroud until you separate the shroud from the engine assembly.
- Remove the shroud.

## Step 44 — Remove the air filter housing



- Remove the Phillips screw securing the filter cover.
  - ✦ During reassembly, be sure to tighten the screw to at least **1.7 ft-lb** to prevent it from loosening during operation.
- Remove the filter cover.

## Step 45



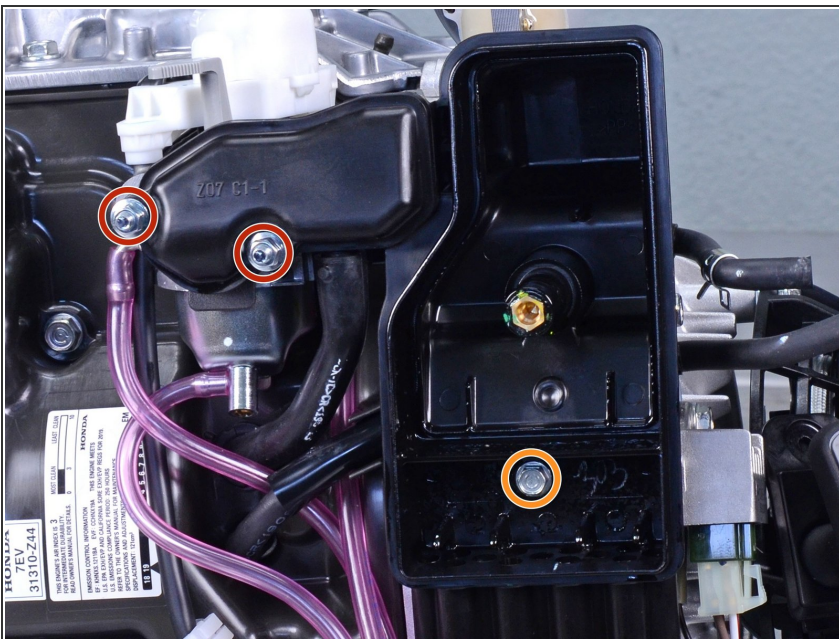
- Remove the air filters from the filter box.
- ⓘ To clean the filters:
  - Clean the filters in warm soapy water
  - Allow the filters to dry thoroughly
  - Dip the filters in clean engine oil, and squeeze out excess oil

## Step 46



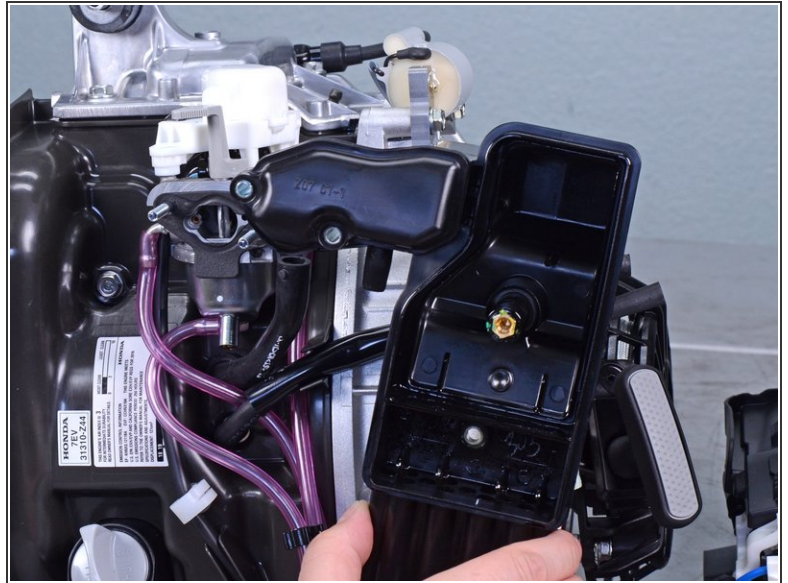
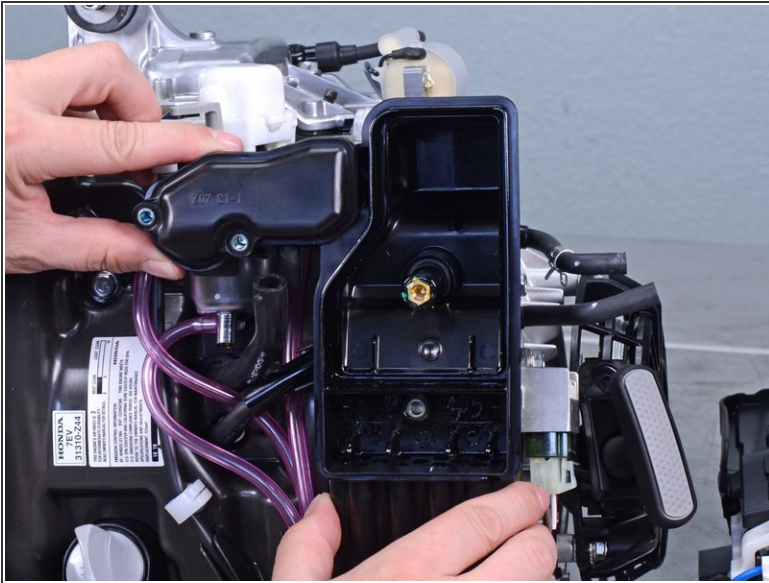
- Disconnect the breather tube from the air cleaner housing.

## Step 47



- Remove the following fasteners securing the housing:
  - Two 8 mm nuts
    - ☑ During reassembly, tighten these to **3.6 ft-lb**.
  - One 8 mm bolt

## Step 48



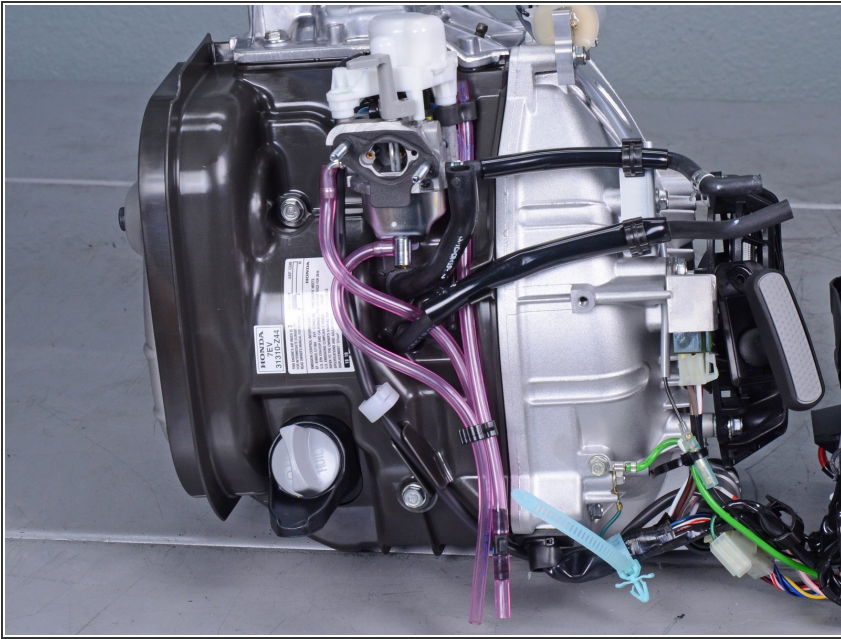
- Remove the air filter housing.

## Step 49



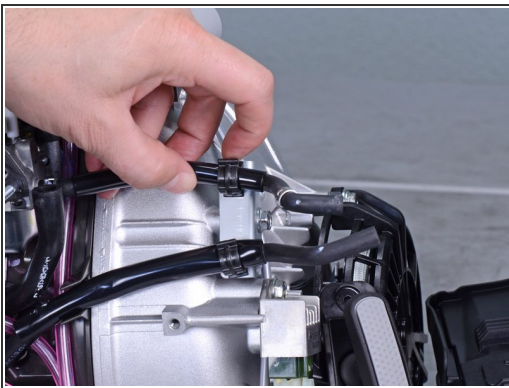
- ☑ During reassembly, replace the air intake gasket if it shows signs of wear.

## Step 50



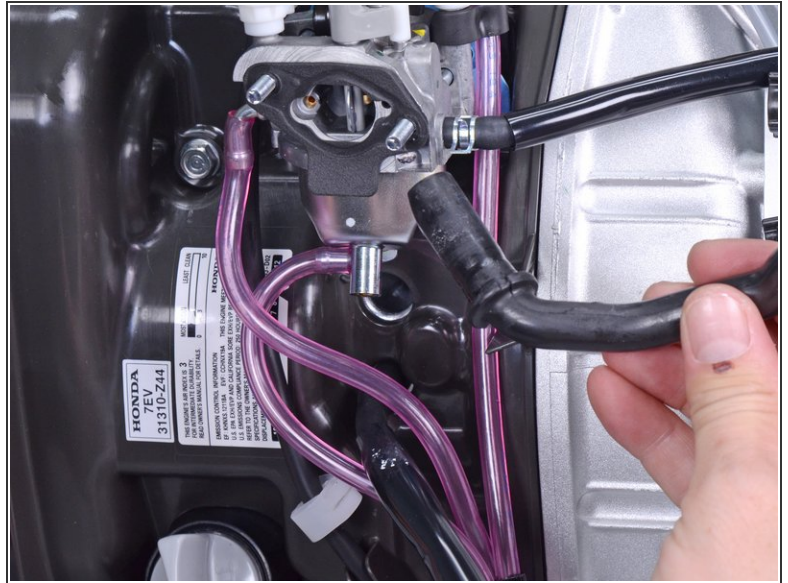
- ✦ During reassembly, use this photo as a reference for how to route the hoses.

## Step 51



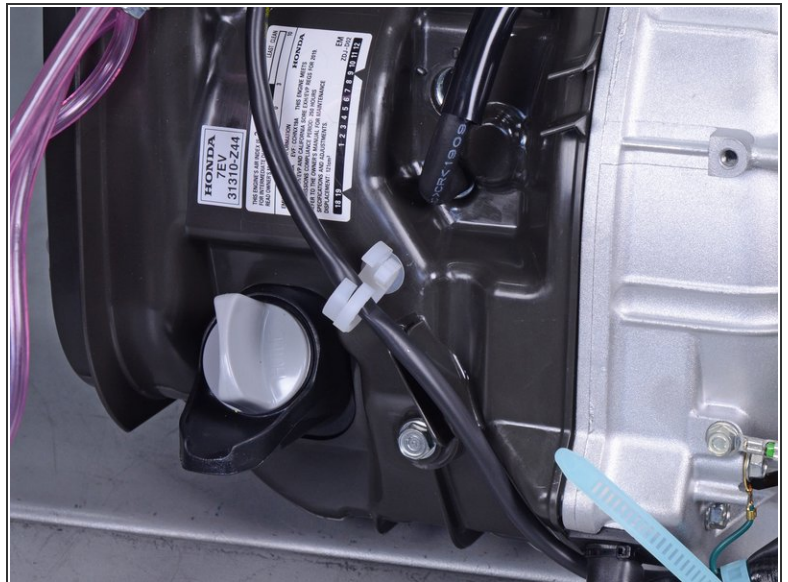
- Unclip the fuel and air hoses from the side of the motor assembly.

## Step 52



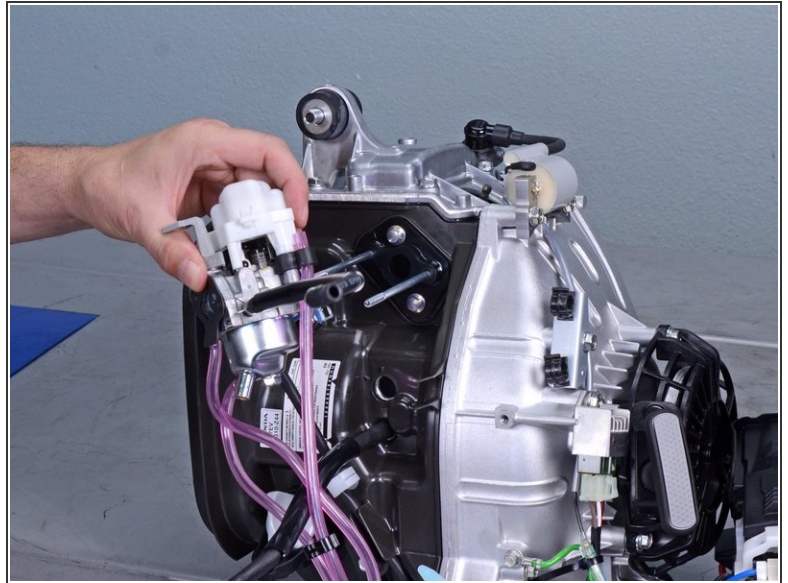
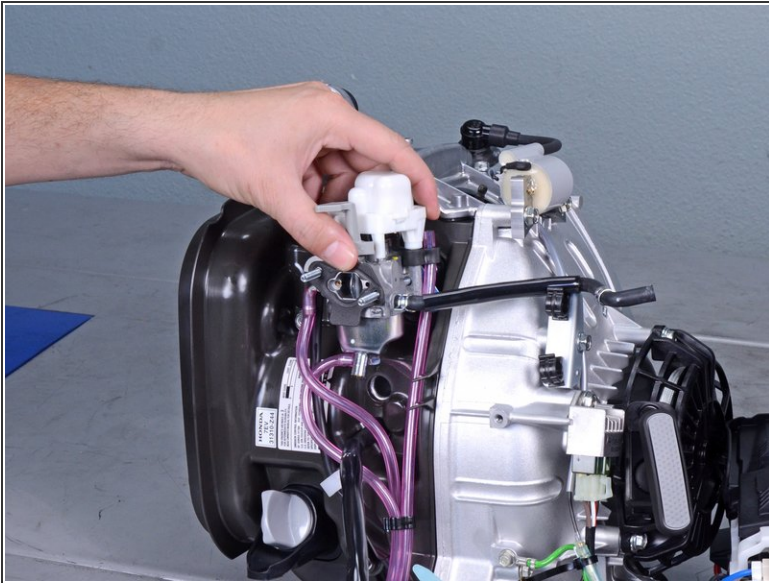
- Pull the breather tube straight out of its port.

## Step 53



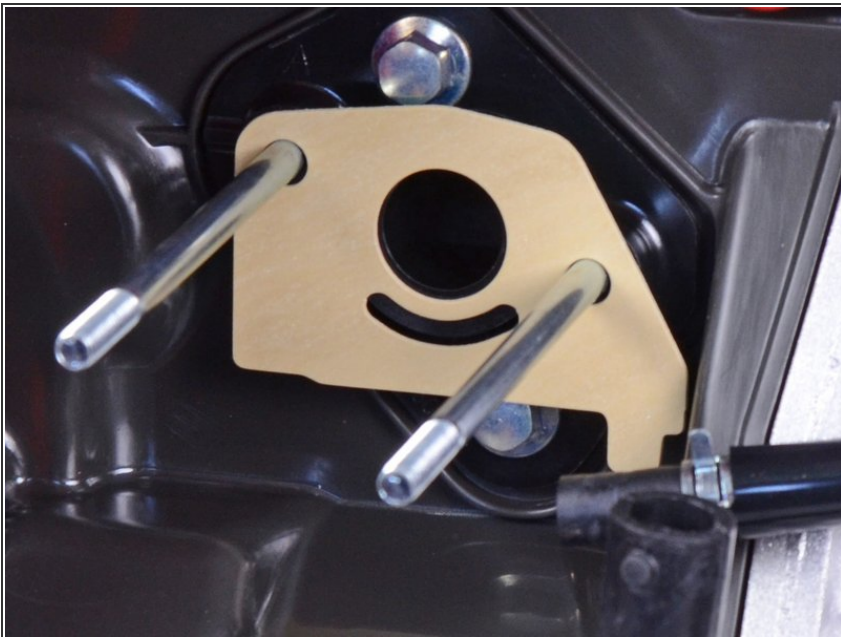
- Use a flathead screwdriver to unclip the carburetor wires from the side of the motor assembly.

## Step 54



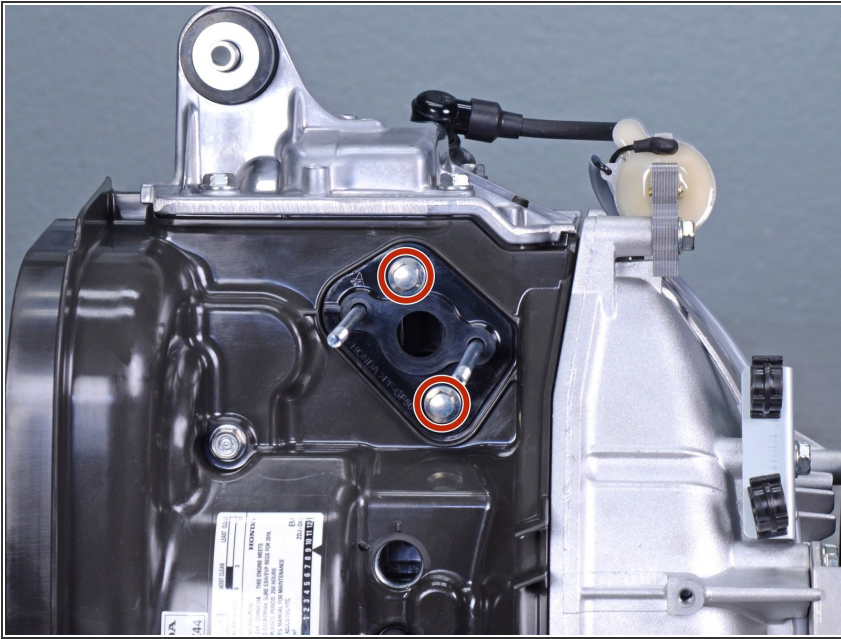
- Slide the carburetor off its two bolt rails.

## Step 55



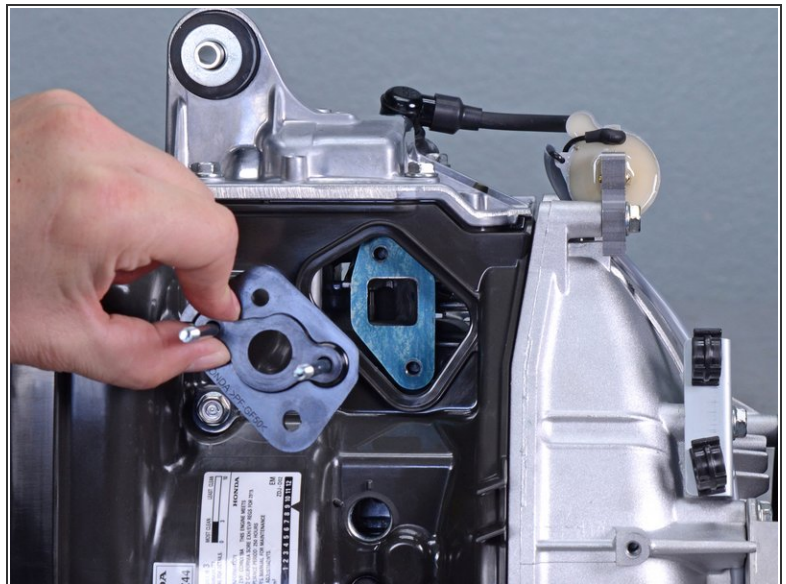
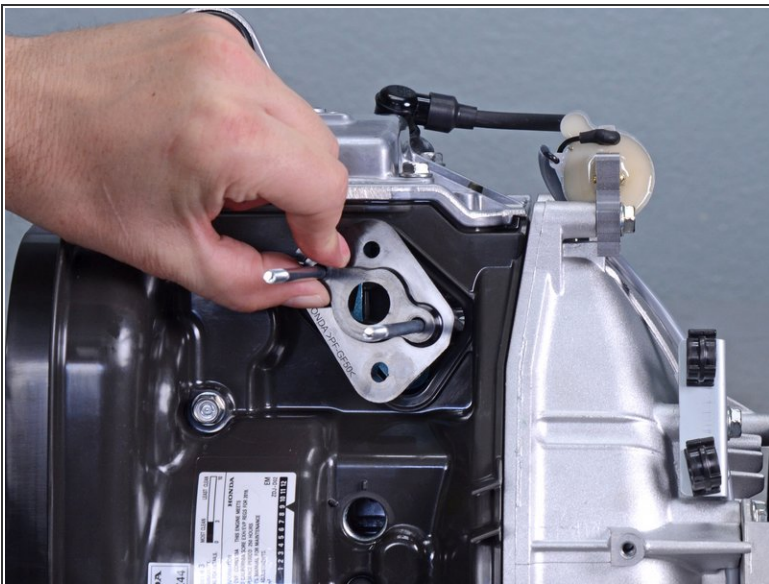
- ★ During reassembly, replace the carburetor seal if it shows signs of wear.

## Step 56



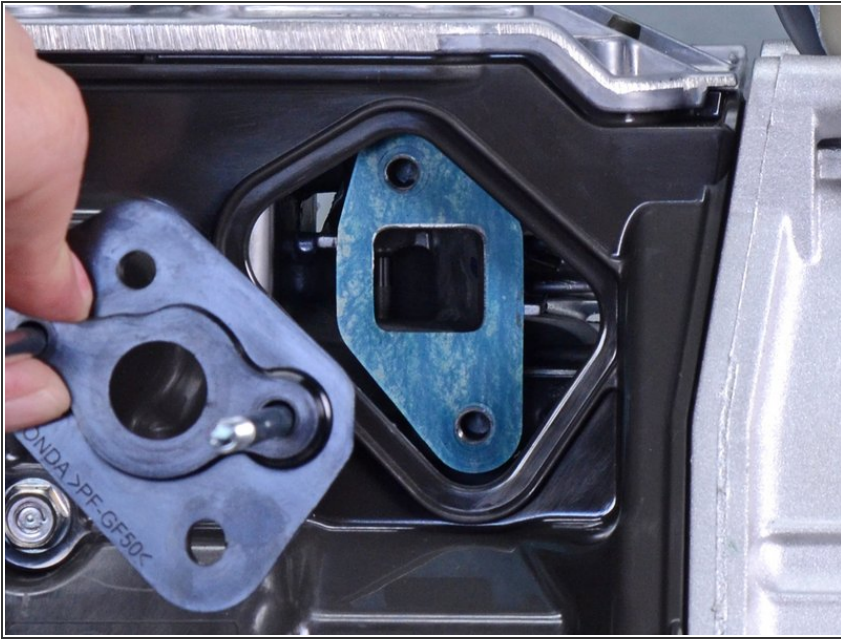
- Use an 8 mm socket to remove the two bolts securing the carburetor insulator.
- ☑ During reassembly, tighten these bolts to **2.2 ft-lb**.

## Step 57



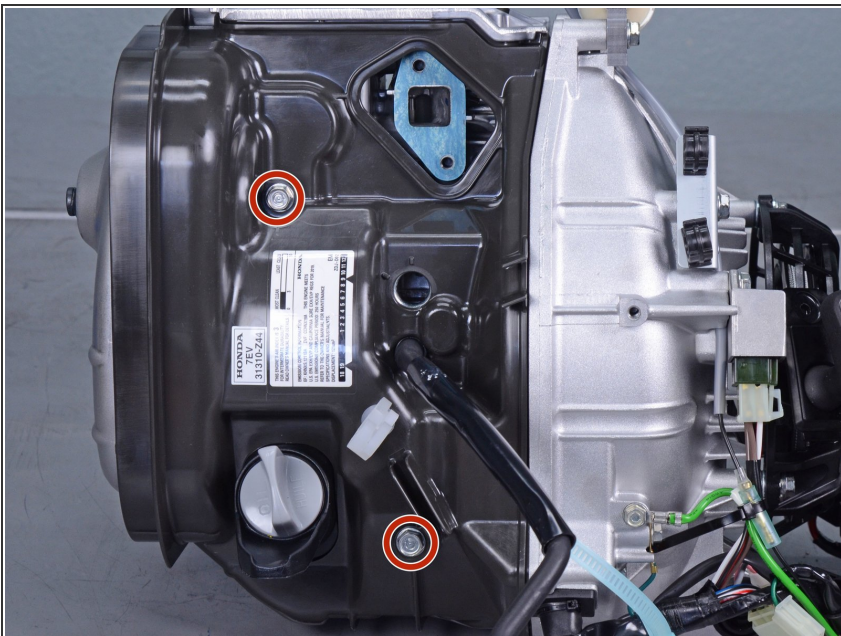
- Remove the carburetor insulator along with the two bolt rails.

## Step 58



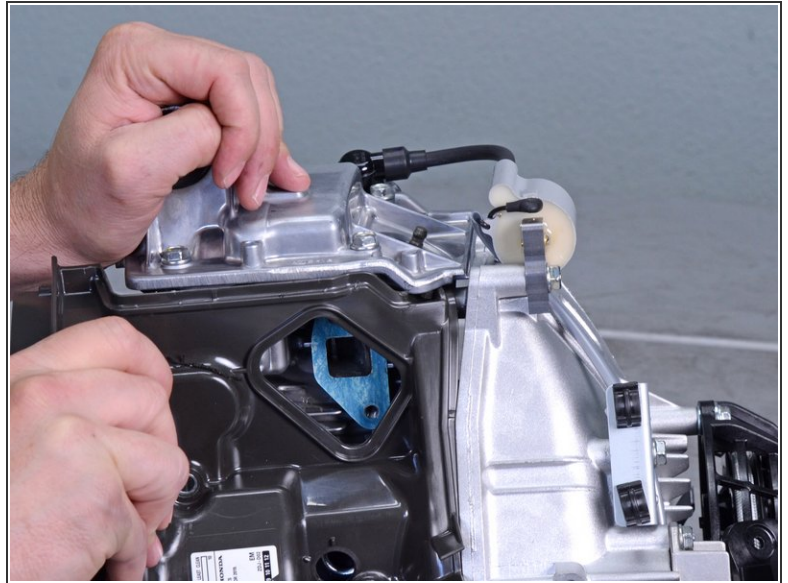
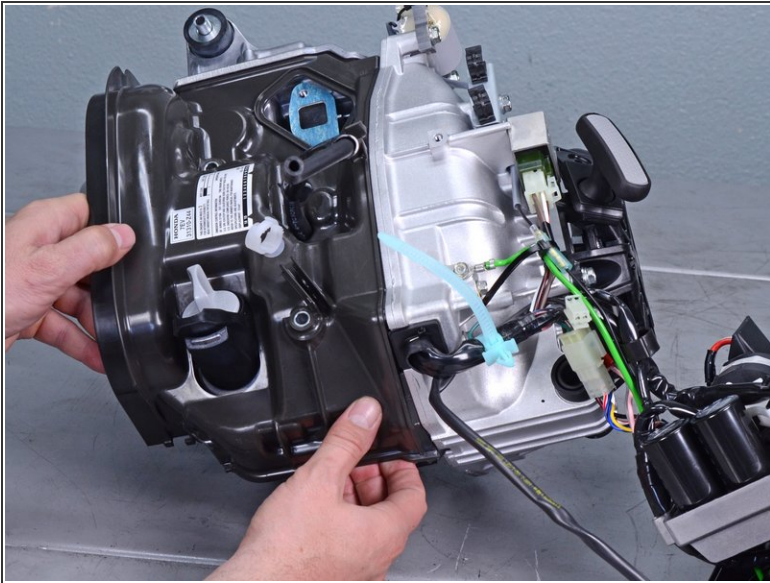
- ✦ During reassembly, replace the insulator gasket if it shows signs of wear.

## Step 59



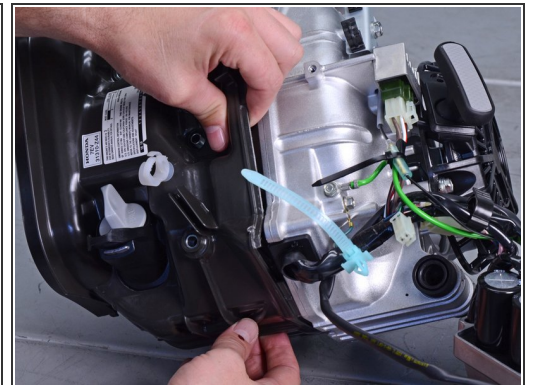
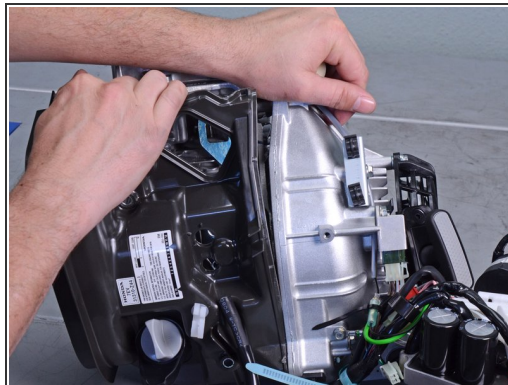
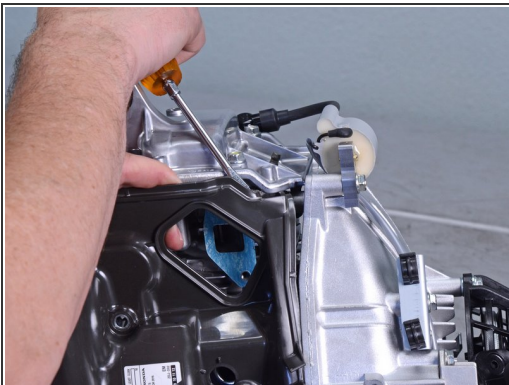
- Use a 10 mm socket to remove the bolts securing the right shroud.

## Step 60



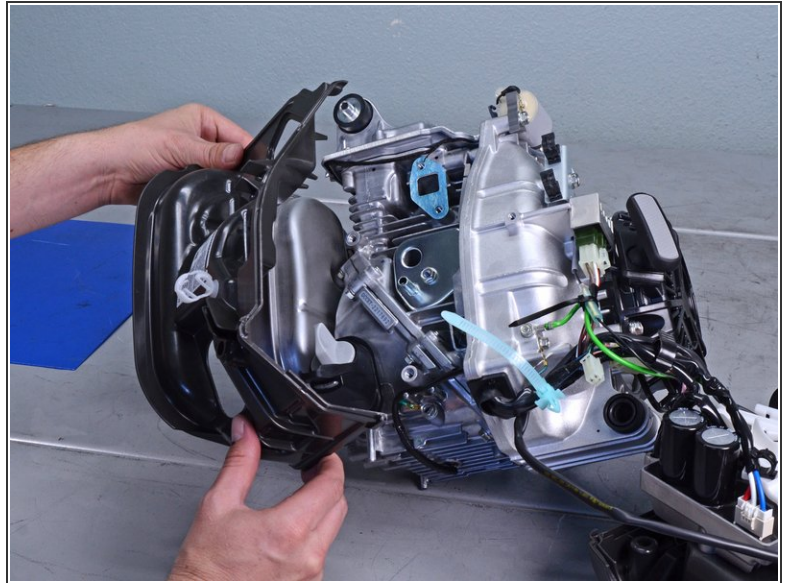
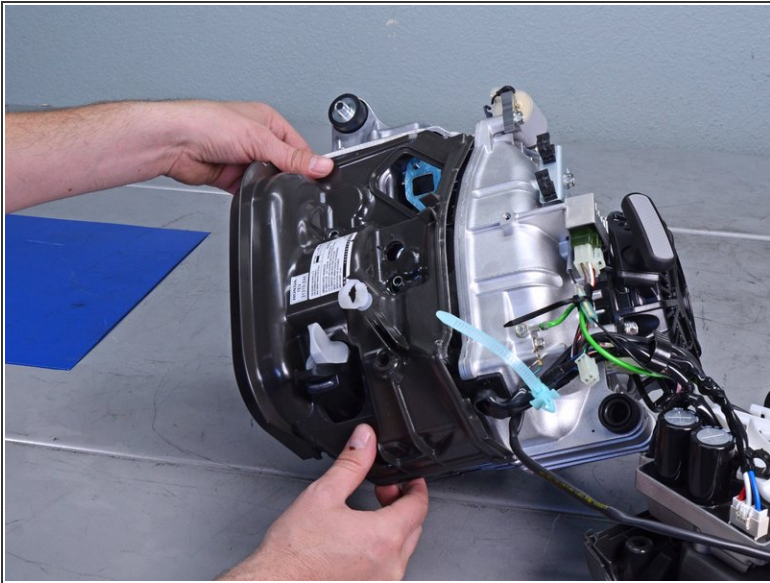
- Begin separating the right shroud from the engine assembly by pulling it away from the assembly.

## Step 61



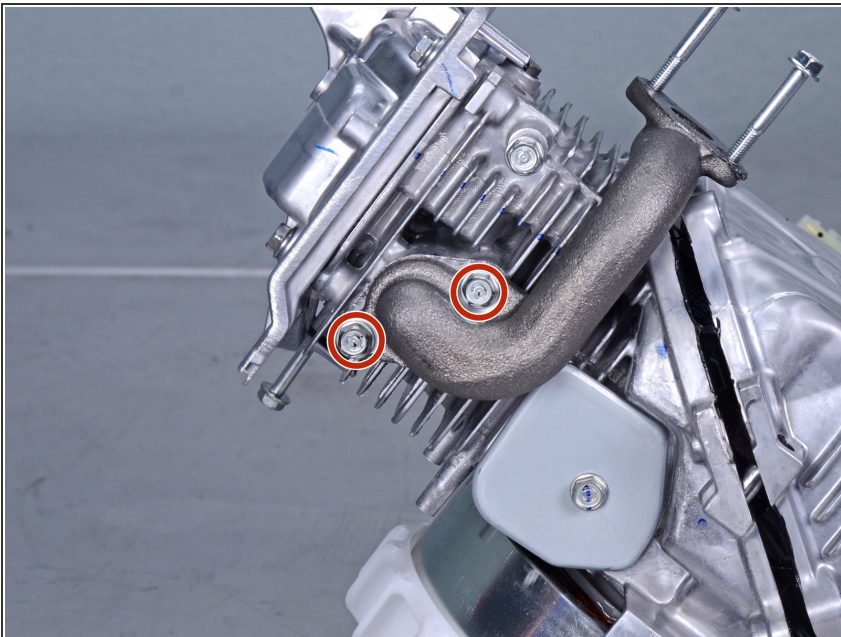
- Pull the shroud away along the edge. Use a flathead screwdriver to pry it out of the engine assembly groove.

## Step 62



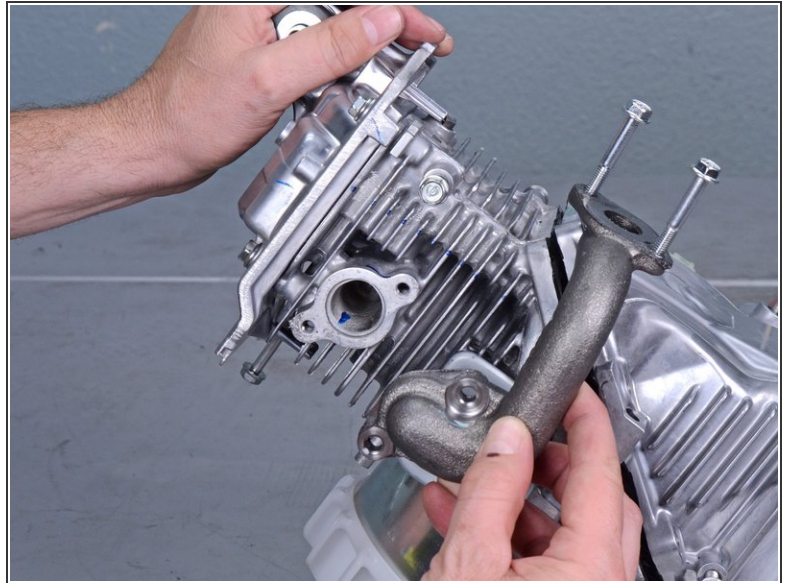
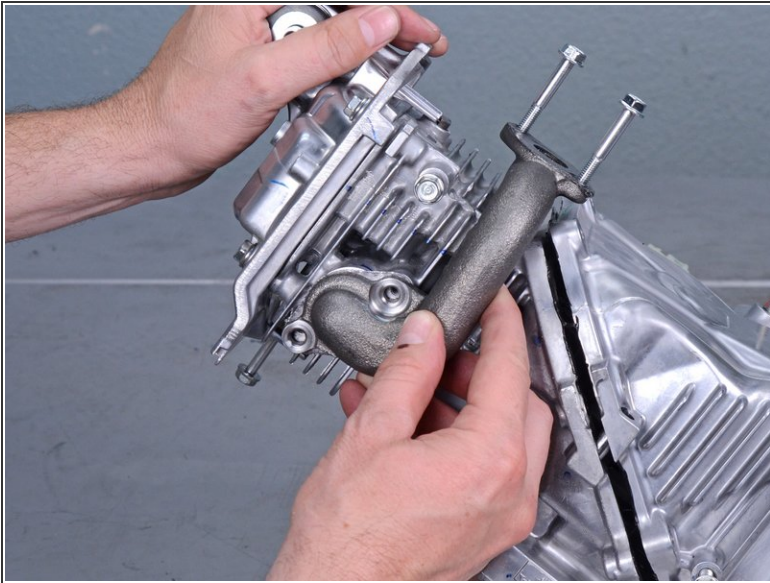
- Remove the right shroud from the engine assembly.

## Step 63 — Remove the exhaust pipe



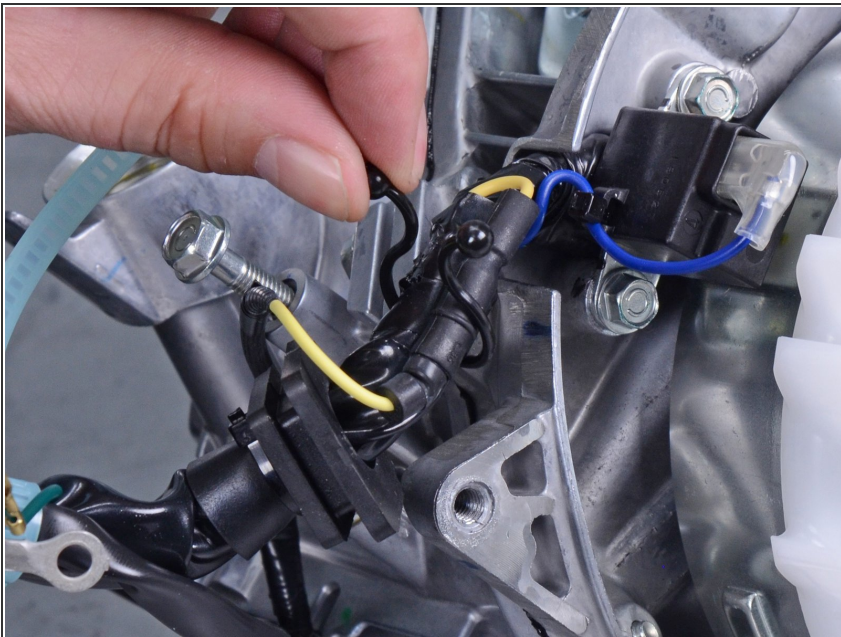
- Use a 10 mm socket to remove the two bolts securing the exhaust pipe.

## Step 64



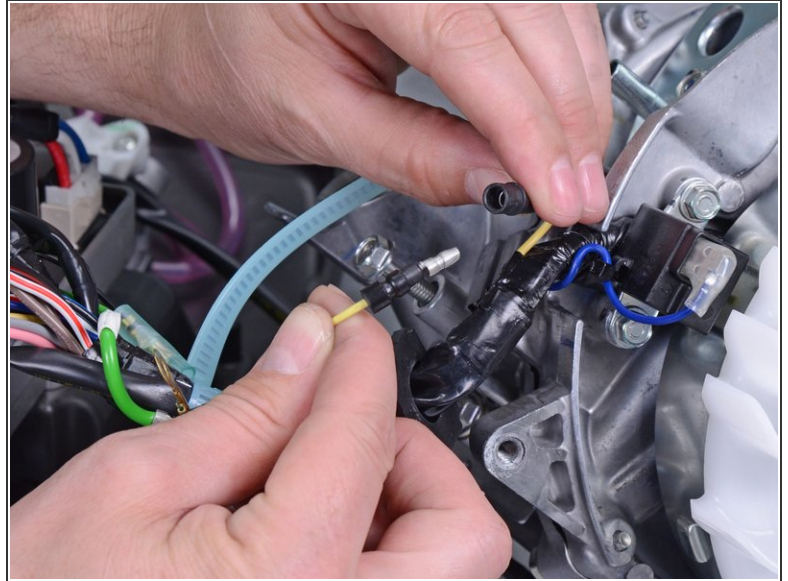
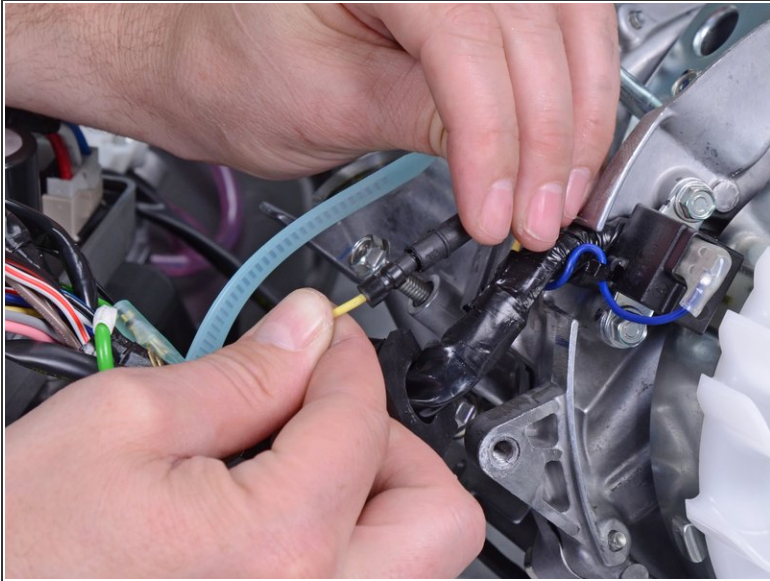
- Remove the exhaust pipe from the engine assembly.

## Step 65 — Disconnect the engine oil sensor



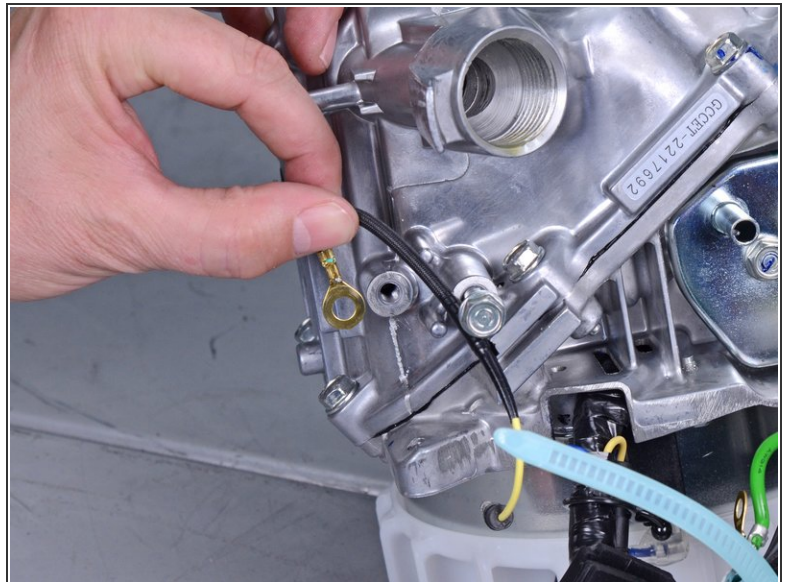
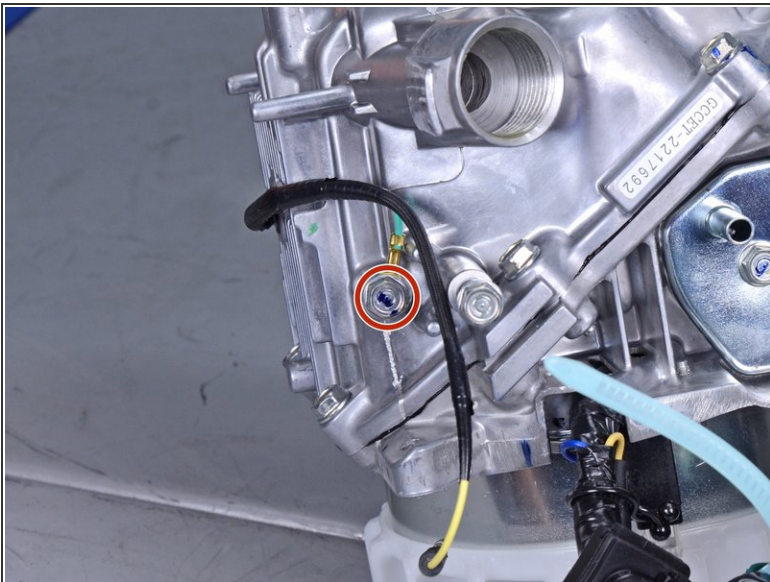
- Loosen the cable tie securing the engine oil sensor.

## Step 66



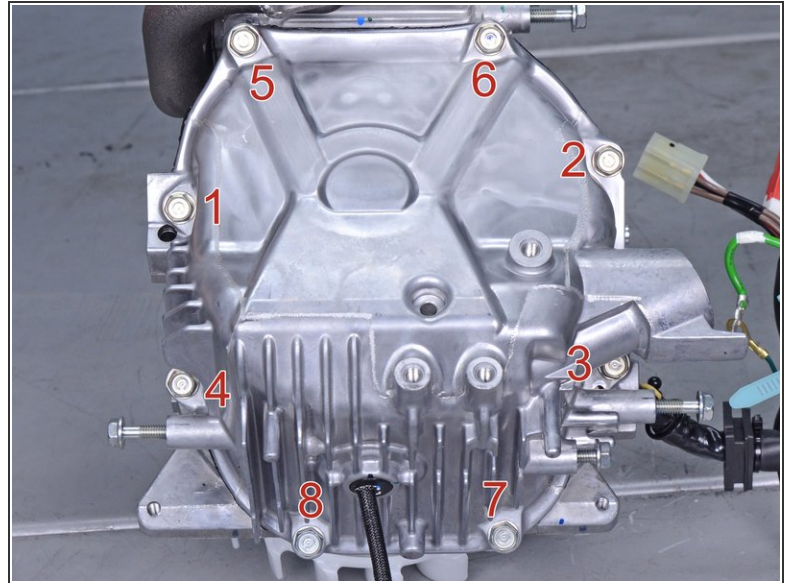
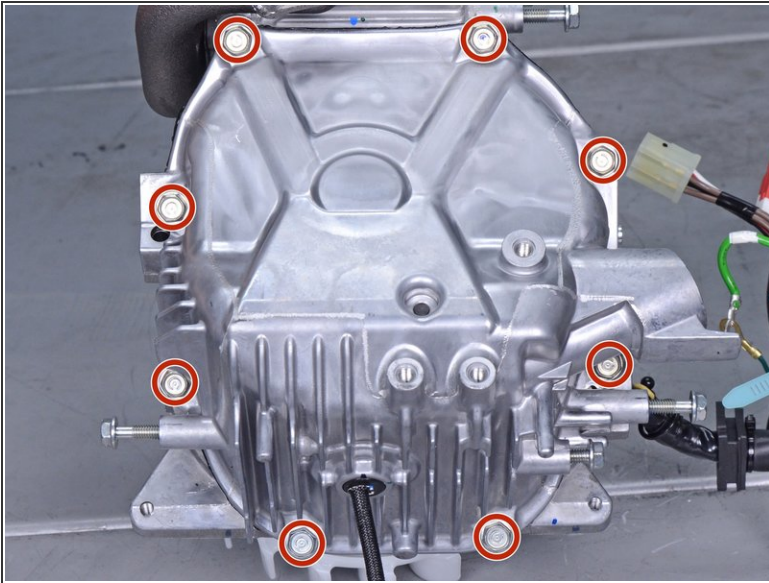
- Disconnect the yellow engine oil sensor wire by pulling the connector apart.

## Step 67



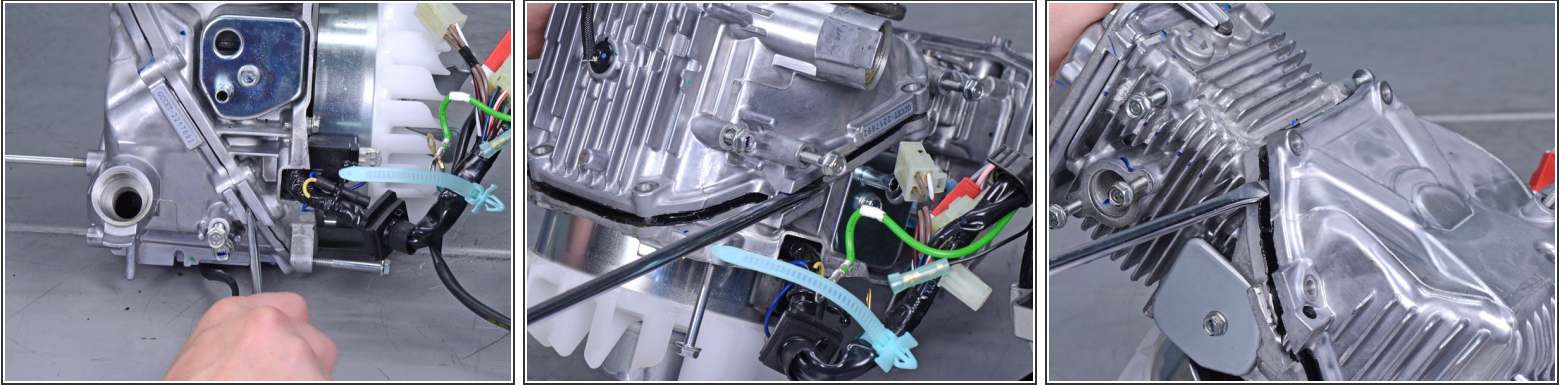
- Use a 10 mm socket to remove the bolt securing the engine oil sensor ground.


## Step 68 — Remove the crankcase cover




- Use a 10 mm socket to remove the eight bolts securing the crankcase cover.
- ☑ During reassembly, hand-tighten the crankcase cover bolts in the pattern indicated in the second image.


## Step 69



 The crankcase cover is sealed with liquid sealant and must be pried apart.

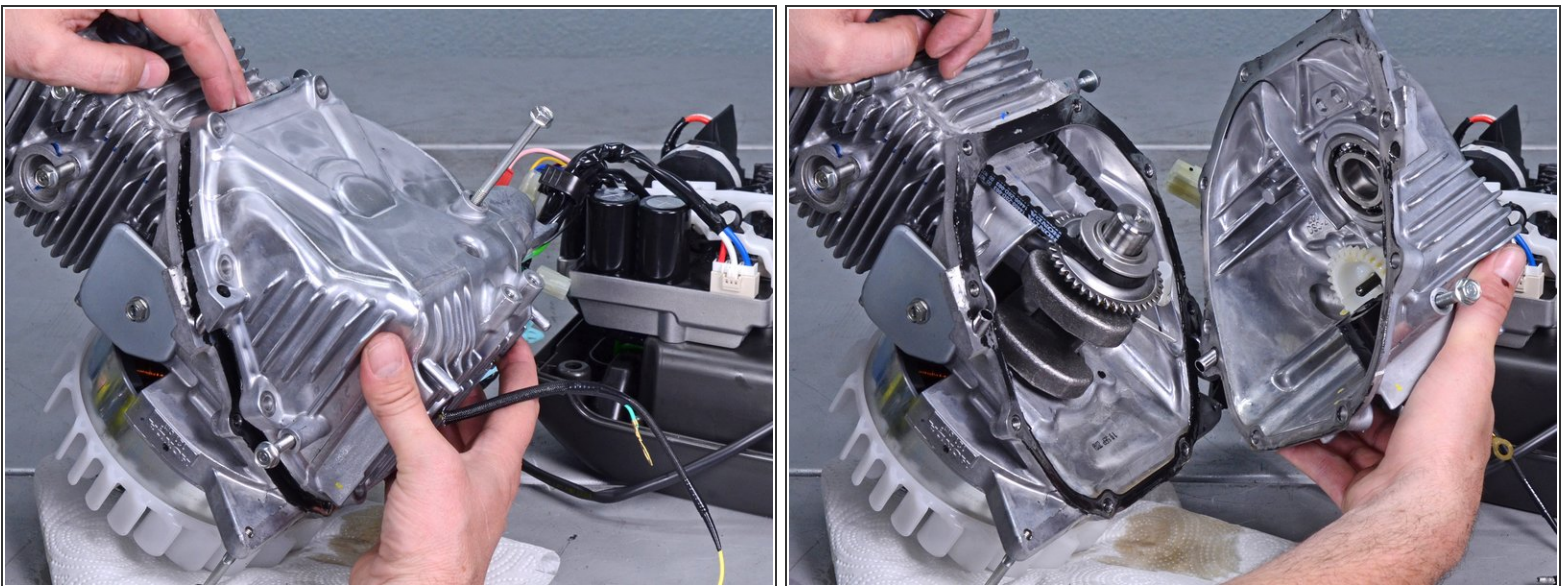
 Be ready to contain any residual engine oil that may spill from the crankcase.

- Insert a large flathead screwdriver or pry bar into the crankcase seam and pry to loosen the crankcase cover.

 Do not use too much force, or you may gouge the mating surface.

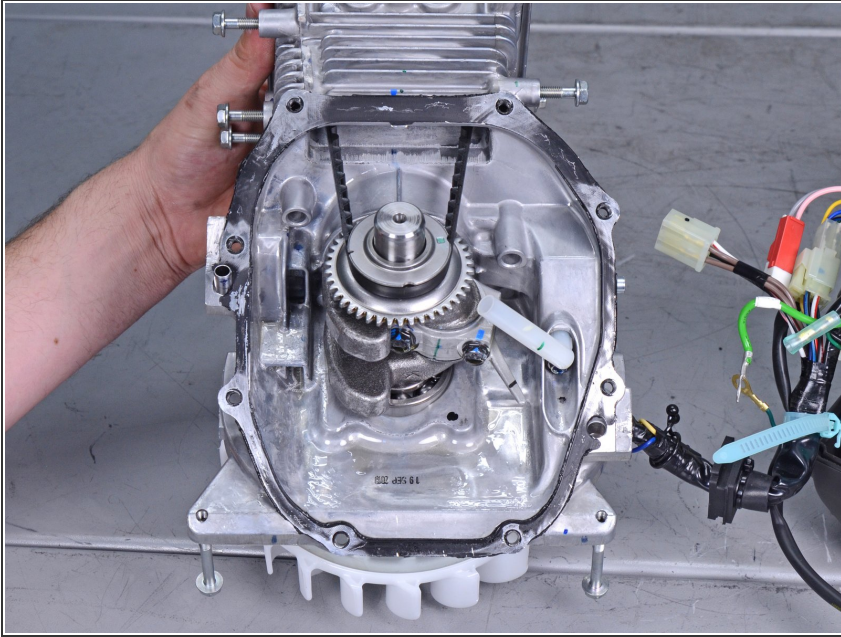
- Pry along the entire crankcase perimeter until you fully loosen the crankcase cover.

## Step 70



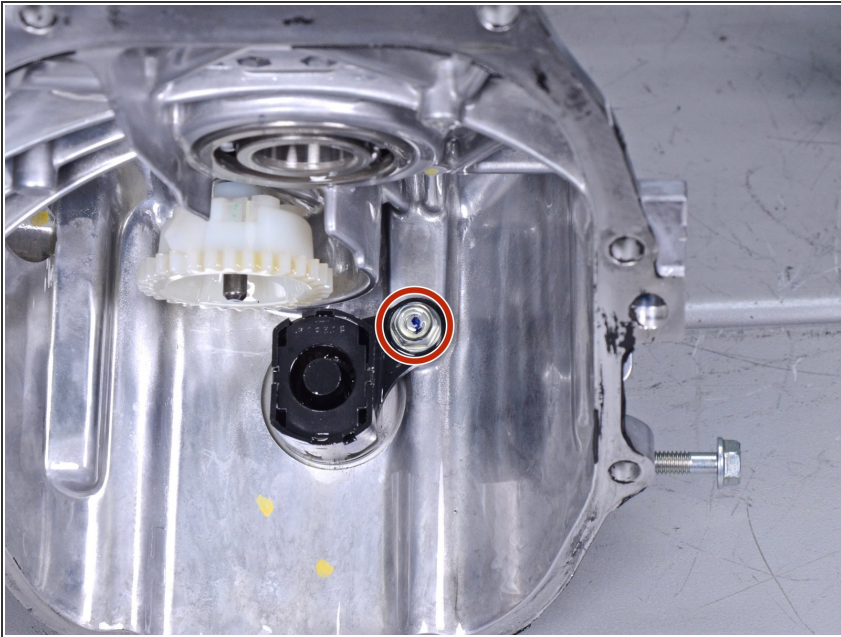
- Separate and remove the crankcase cover.

## Step 71 — Reseal the crankcase



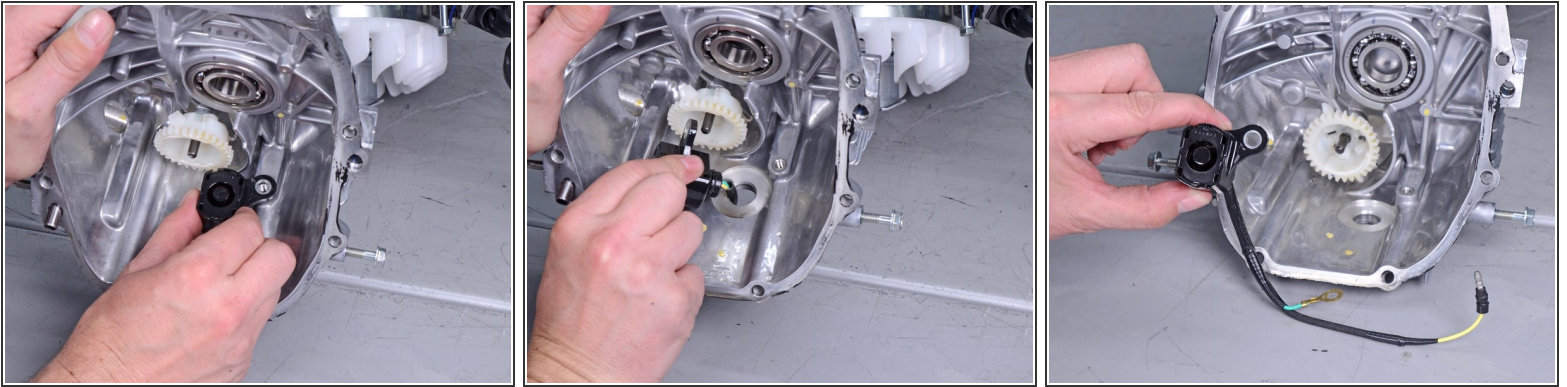
- ★ To reseal the crankcase during reassembly:
  - Clean all adhesive and oil residue off of the cover and crankcase mating surfaces.
  - Apply a bead of liquid sealant to the crankcase.
  - Fit the crankcase cover to the crankcase.
- ⚠ Do not fill the crankcase with engine oil for at least 20 minutes after sealing the crankcase.

## Step 72 — Remove the oil level sensor



- Use a 10 mm socket to remove the bolt securing the oil level sensor.

## Step 73



- Thread the sensor cable through the port and remove the sensor.
- ⓘ Be sure to check if your replacement sensor has an O-ring pre-installed on the sensor's mating surface. If it doesn't, transfer the O-ring over.

To reassemble your device, follow these instructions in reverse order.