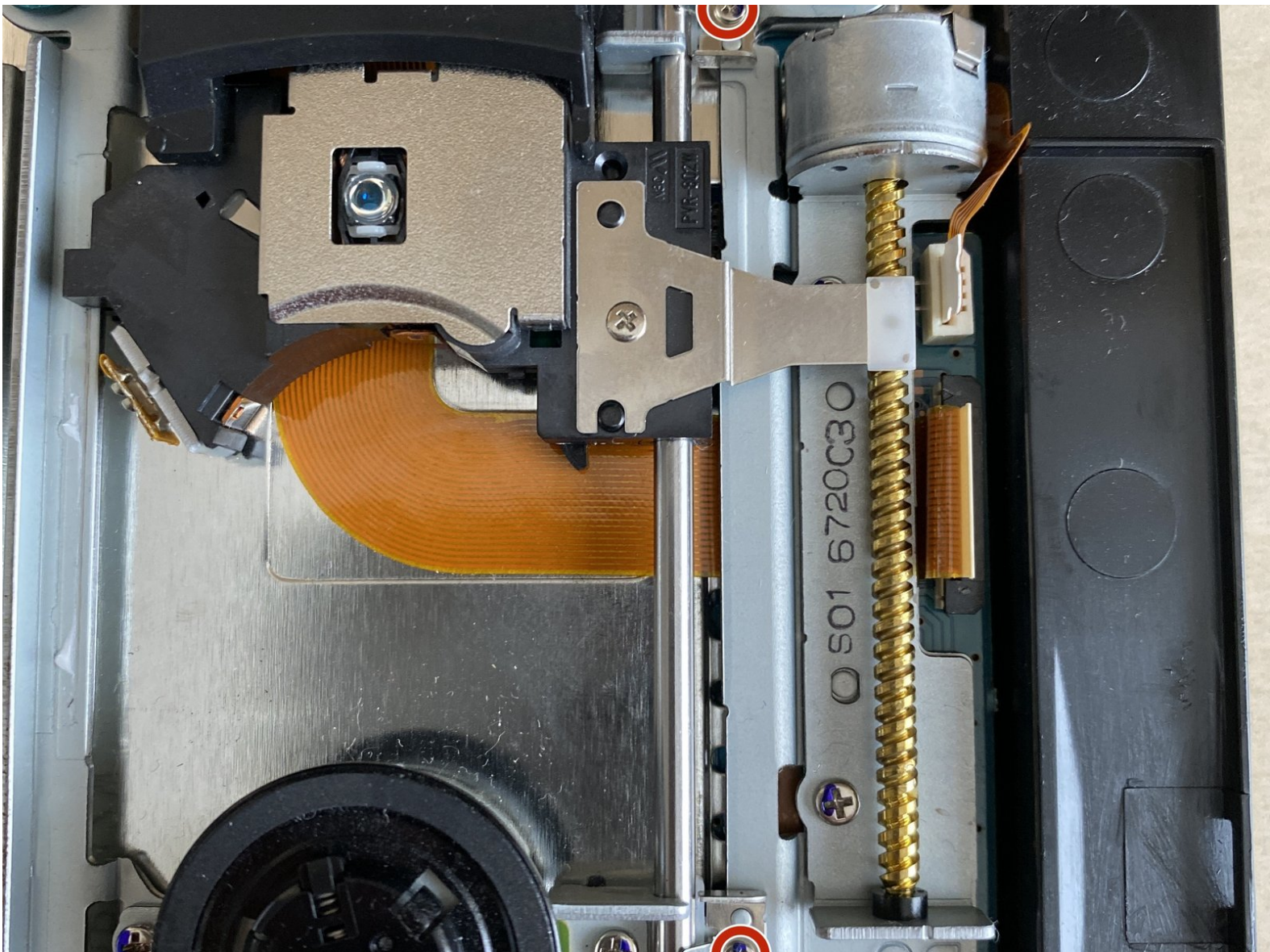




PlayStation 2 Slimline PVR-802W Laser Replacement

PVR-802W Laser replacement for the PS2 Slim

Written By: koppie007



INTRODUCTION

Hi!

This guide will explain how to replace the laser for the PS2 Slim.

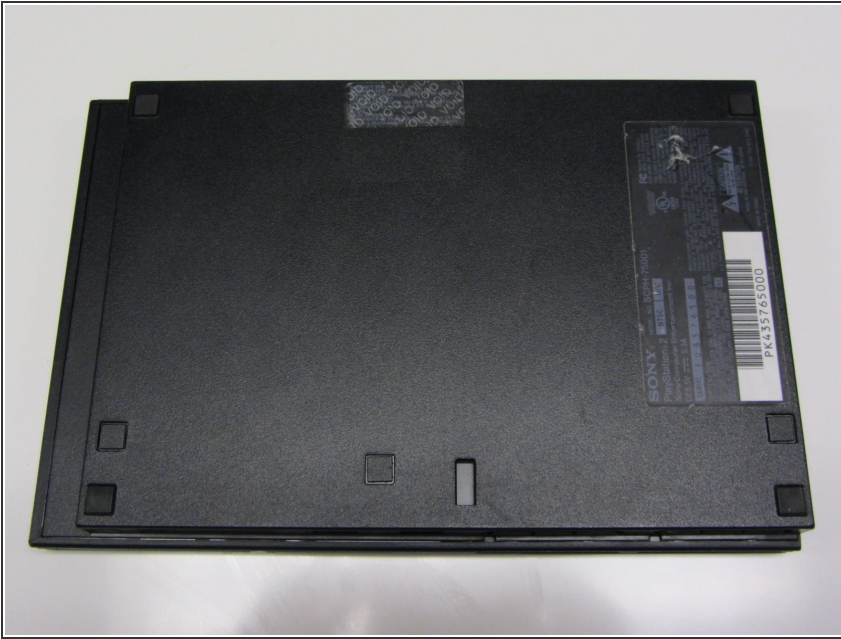
Note: There are 2 different lasers available for the PS2 Slim, this guide is only for replacing the PVR-802W



TOOLS:

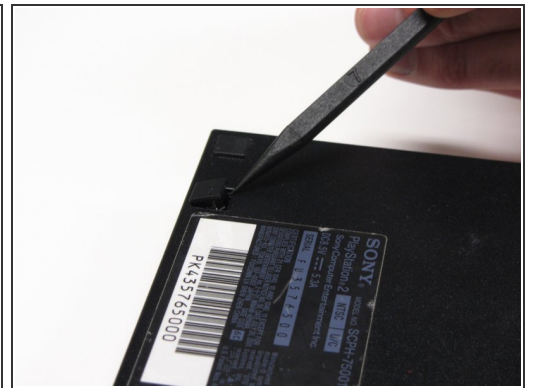
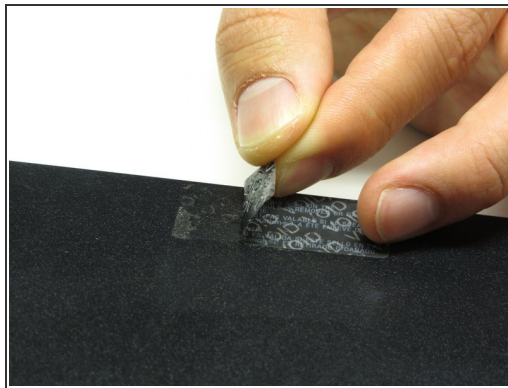
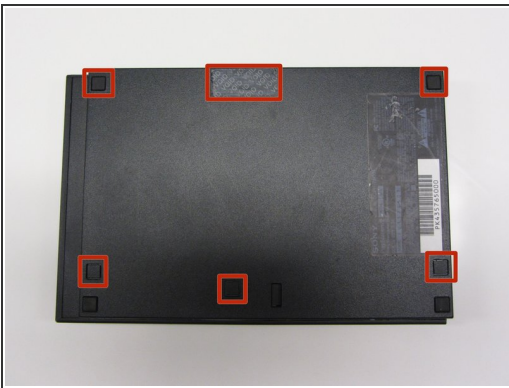
- [Phillips #1 Screwdriver](#) (1)
 - [Spudger](#) (1)
 - [Tweezers](#) (1)
-

Step 1 — Outer Shell



- Disconnect all cables from the console and flip the unit over to reveal its base.

Step 2



- Locate the 6 feet on the base of the unit. Pry them off using a spudger to reveal the screws.
- ⓘ Note: One of the feet is located under the sticker shown in the photo. Removing this sticker will void any warranty with Sony.

Step 3




- Remove all six 4.0 mm screws from the base of the unit using a #1 Phillips screwdriver.

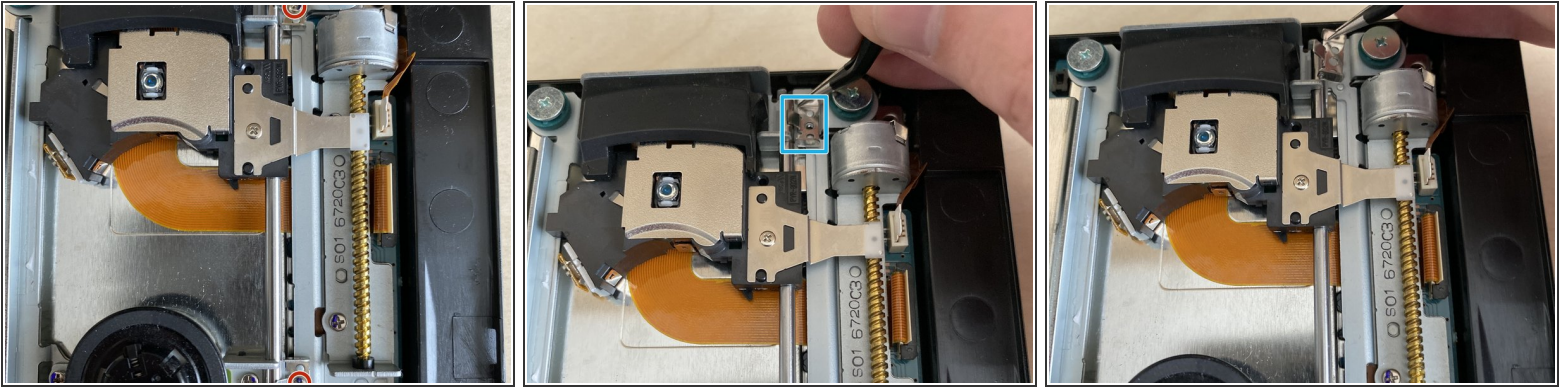
Step 4



- Starting at the corner at which the power and Ethernet ports are located, pry open the outer shell using a spudger and continue around the entire unit.

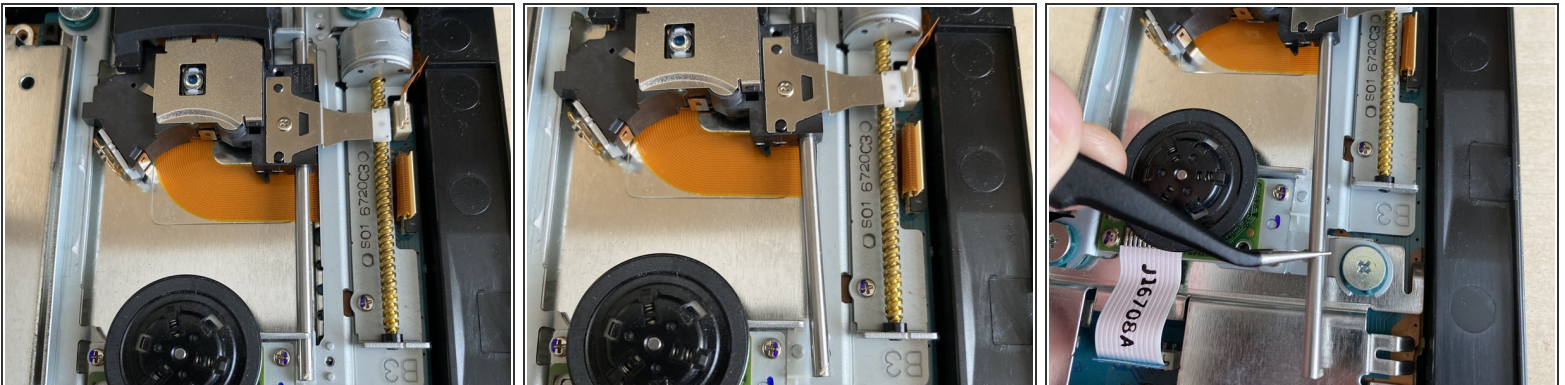
 Note: You may use your hands for additional force to separate the two pieces of the outer shell.

Step 5 — Remove screws and brackets



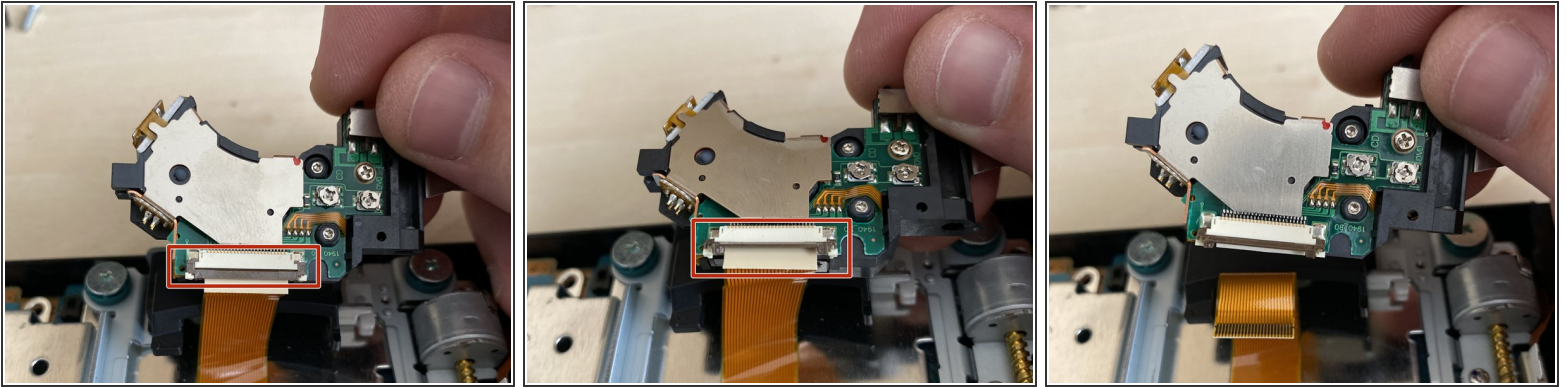
- Remove the 2 philips screws
- Remove the brackets on both sides with your tweezers.

Step 6 — Remove silver rail



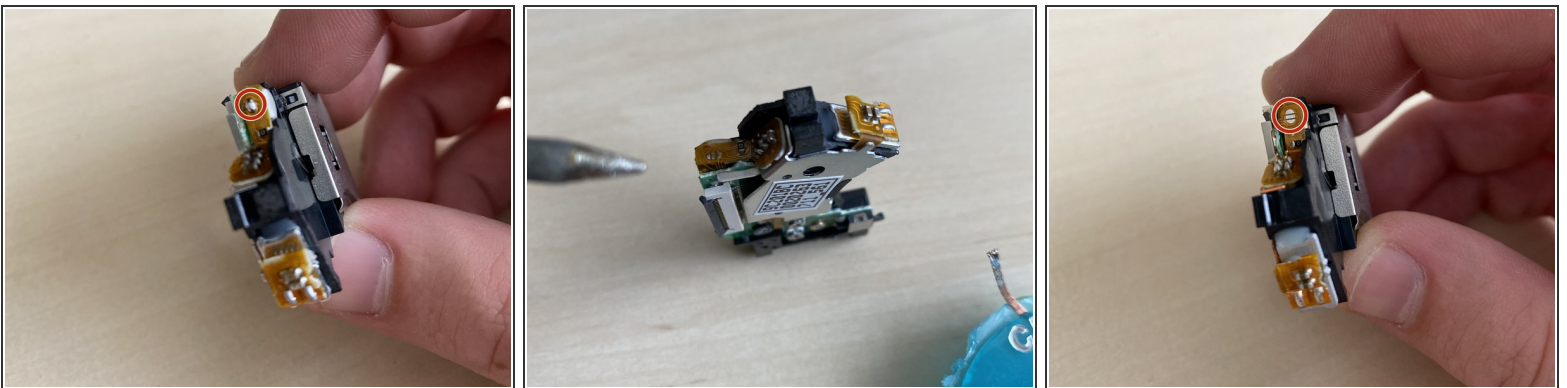
- If you got the same results as in the 1st photo, then proceed.
- Take the silver rail and push it out *carefully* from the track.
- Take the silver rail with your tweezers and pull it towards yourself to take it out. Be carefull, as it still attached to the laser, just guide it slowly towards yourself.

Step 7 — Remove laser



- Take the laser with your hand, and tilt it like in the photo (to the back).
- Open the ZIF connector. Be careful not to break it, it can break easily. If you replace the laser, it won't matter, you can even practice how to open it and close it.
- Take out the ribbon cable and remove the laser.

Step 8 — Desoldering the anti-static security

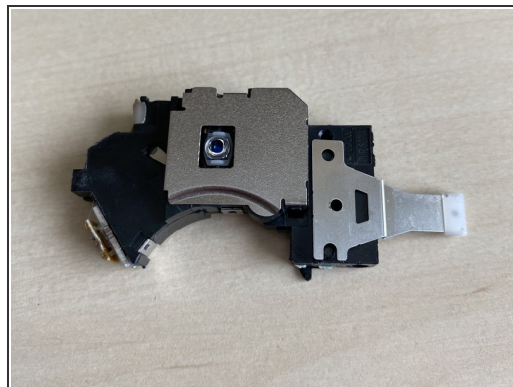
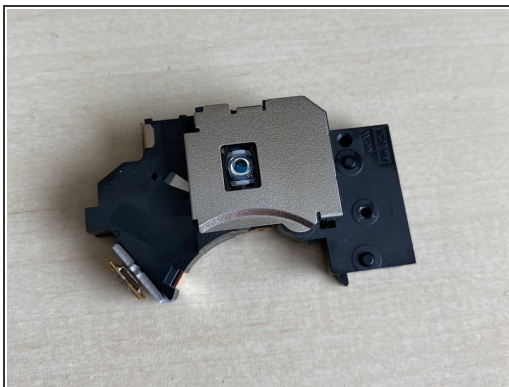
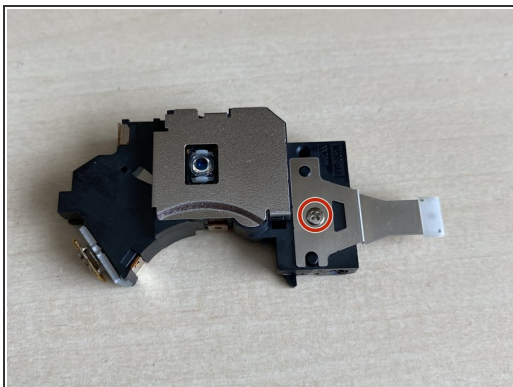


⚠ It's important to remove the anti-static security, otherwise it won't work! Some lasers come without the anti-static security.

⚠ You need a soldering station to DESOLDER the anti-static (if it's there), without desoldering it, the laser could be busted!!

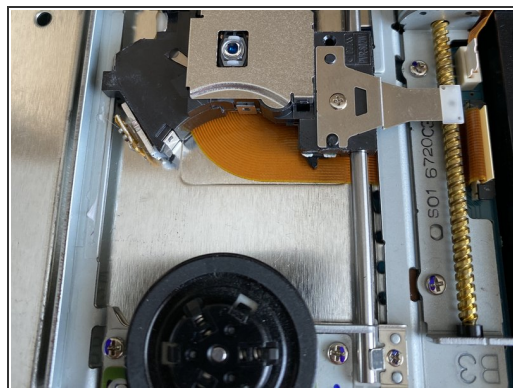
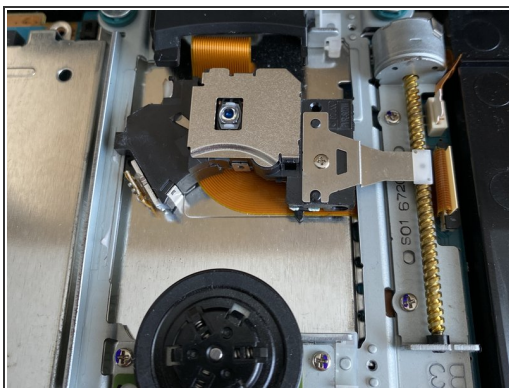
- Remove the anti-static security. Use some copper wick to remove the solder.
- When it looks like in the 3rd photo, you are good to.

Step 9 — Transfer holder



- Remove the single philips screw.
- Transfer the holder to the new laser and fasten it again with the philips screw.

Step 10 — Place the new laser in



- Take the new laser and open up the ZIF connector.
- Place it back as shown in the 2nd photo.
- Put everything back together. The 3rd picture show how it needs to be done!

To reassemble your device, follow these instructions in reverse order.

Do not forget to transfer the slider from the old laser to the new one!