



# Replace MSI GT72 2QE Dominator Pro Wireless Card

Replace a failed wireless card on MSI GT72 laptop.

Written By: Robert Stepp



---

## INTRODUCTION

If the wireless card is no longer present in “Computer Management,” then reseating or replacing the card may be necessary. Do not drop screws into the case as they may fall underparts that are difficult to remove. While doing this procedure, please do not touch the gold contact points as it can degrade the connection.



### TOOLS:

- [Philips PH0 Screwdriver](#) (1)
  - [Curved Needle Nose Pliers](#) (1)
-

## Step 1 — Wireless Card



- Remove the seven 6 mm Philips #0 screws on the bottom of the case.

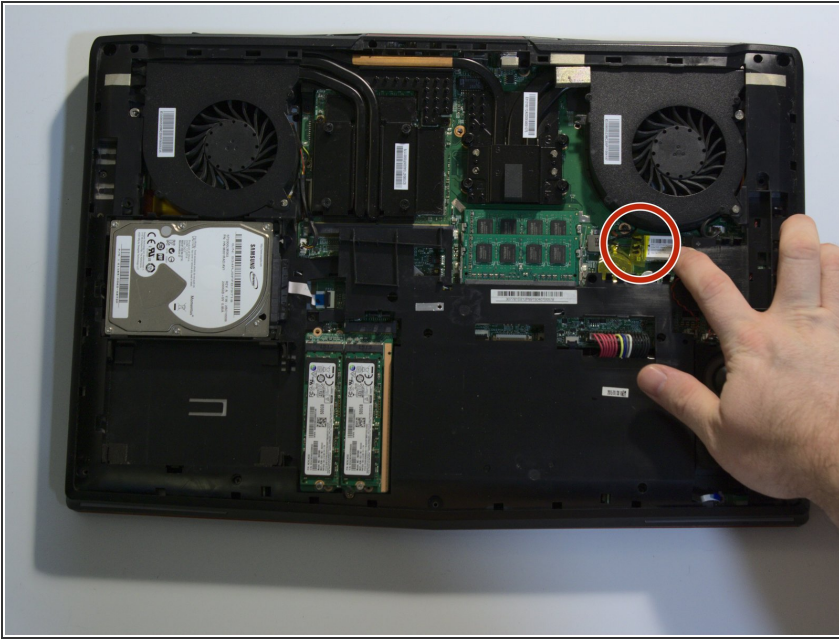
## Step 2



- Gently pull from the rear of the case upwards to remove the bottom of the laptop.

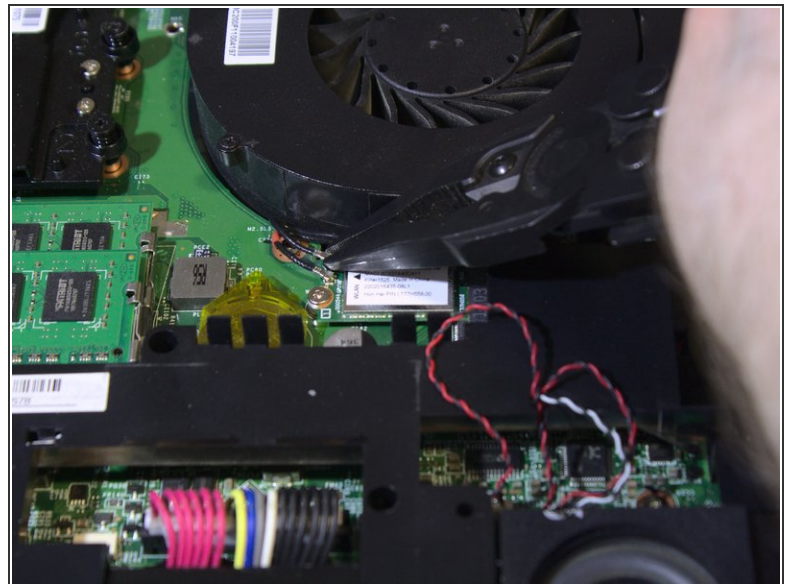
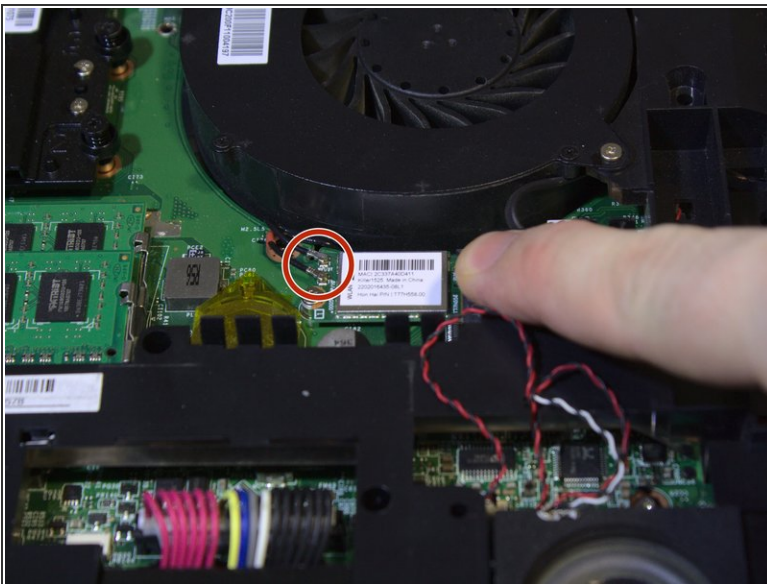


### Step 3



- Remove the yellow tape from the wireless card at the center right of the board.

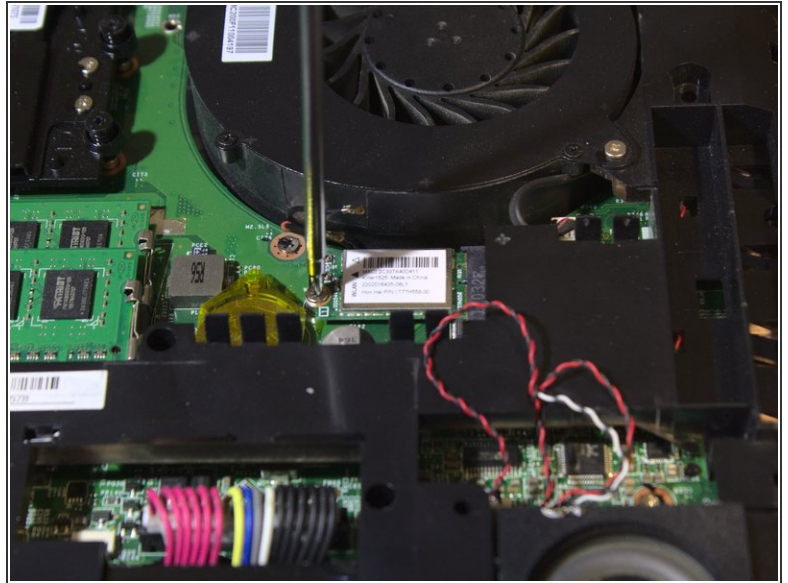
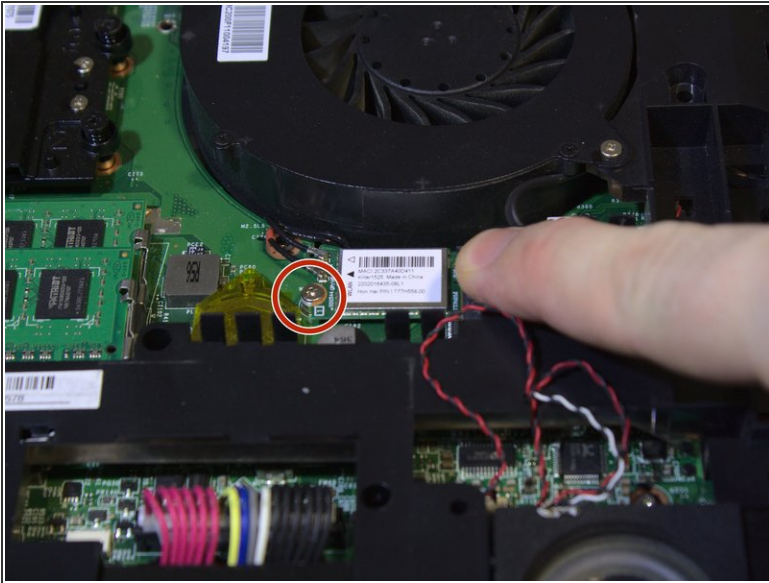
### Step 4



- Using a pair of pliers, remove both wires by pulling straight up from the wireless card.

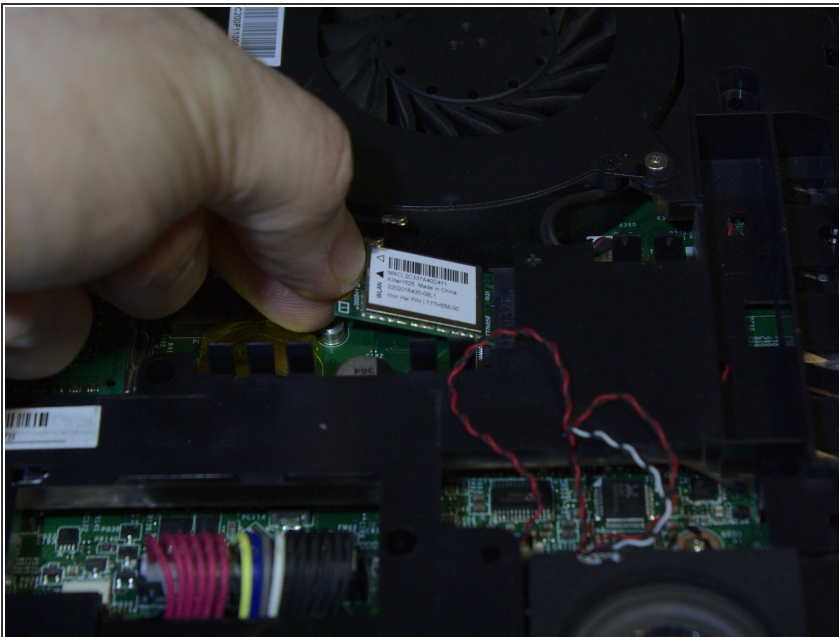
⚠ Do not jerk or yank too hard as it can break off connectors.

## Step 5



- Remove one Philips #0 screw from the motherboard.

## Step 6



- Pull card up and out from the motherboard.
- ⚠ Do not touch gold contacts as it can damage the card.

To reassemble your device, follow these instructions in reverse order.