



Minolta Dimage Xt Battery Replacement

This guide explains how to replace the Minolta Dimage Xt lithium battery.

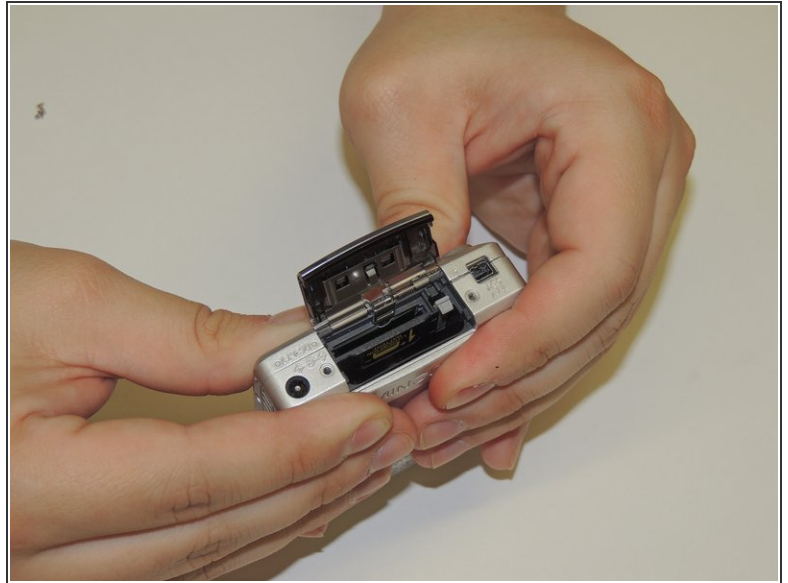
Written By: Megan Milam



INTRODUCTION

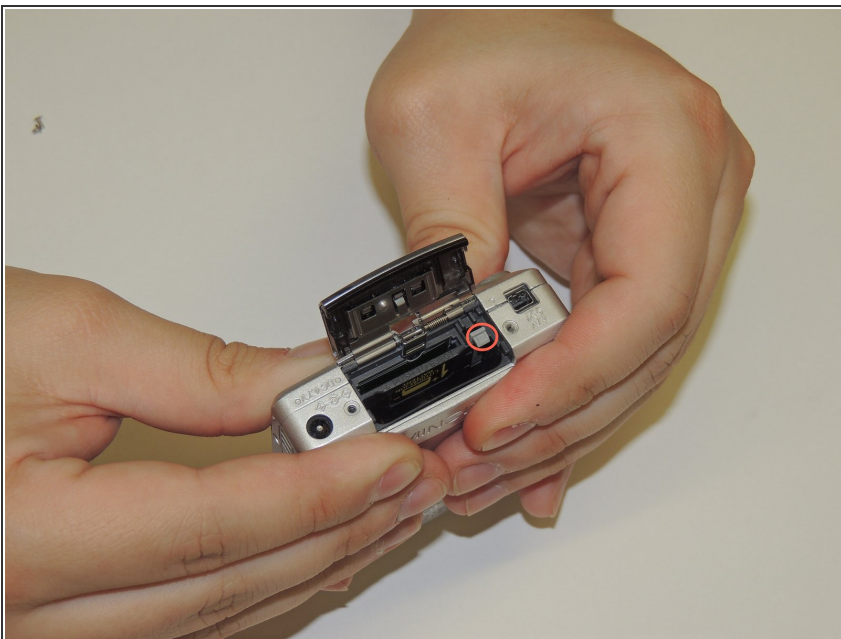
To replace the battery due to malfunction of the device, follow these steps.

Step 1 — Battery



- Turn the camera into the position where the text BATT SD CARD is visible.
- Push the latch directly below the text, in the direction of the arrow above BATT SD CARD text.

Step 2



- To remove the battery, pull the gray tab down and the battery springs free.
- Insert the new battery into the large slot, next to the gray tab. An audible click should be heard.

To reassemble your device, follow these instructions in reverse order.