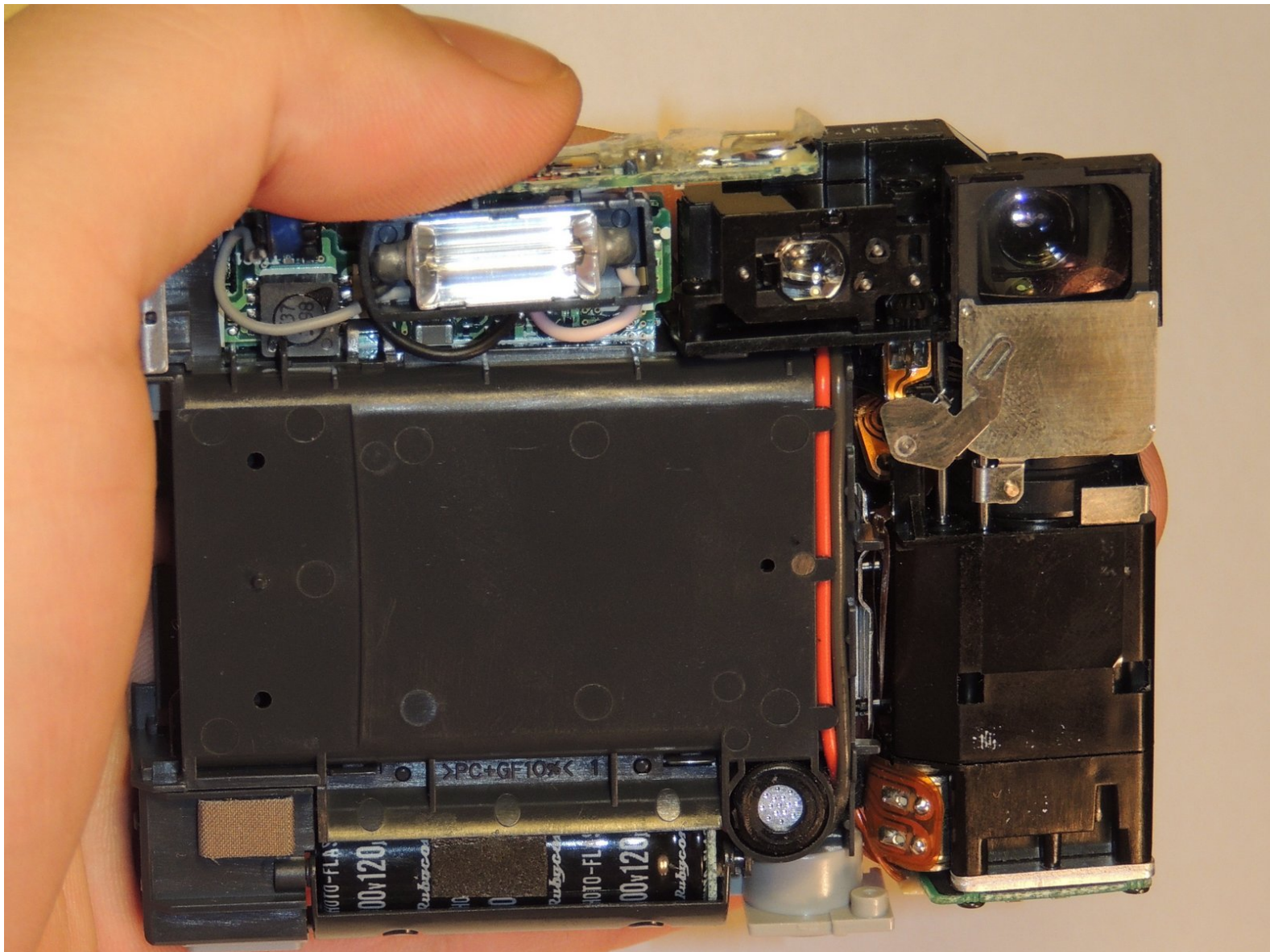




Repairing Minolta Dimage Xt Lens Cover

This guide explains how to ensure that the lens cover is connected properly.

Written By: Megan Milam



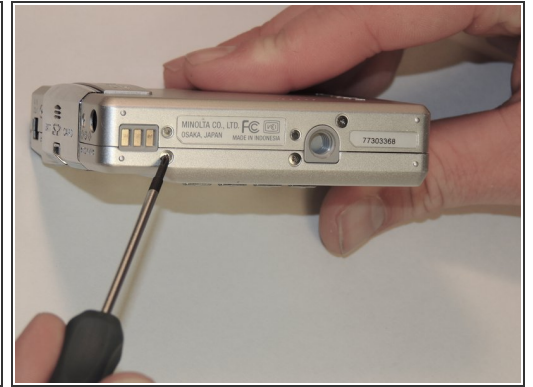
INTRODUCTION

In the event that the lens cover is not functioning properly, either permanently opened or closed, it is necessary to align it properly on its spring arm.

TOOLS:

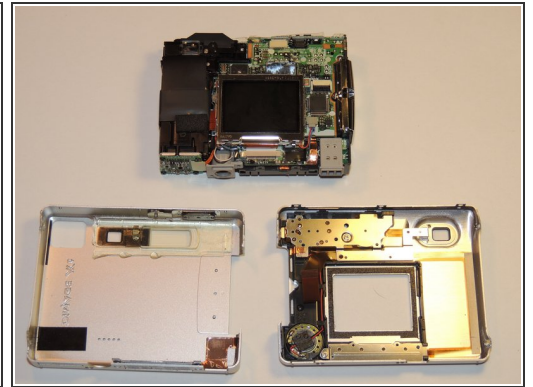
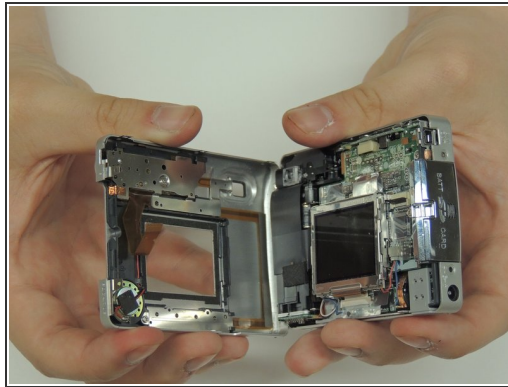
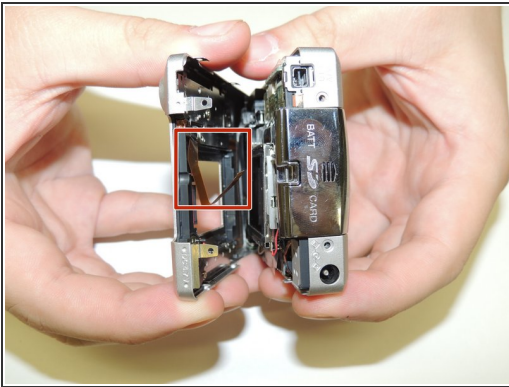
- [Tweezers](#) (1)
 - [Phillips #00 Screwdriver](#) (1)
-

Step 1 — Casing



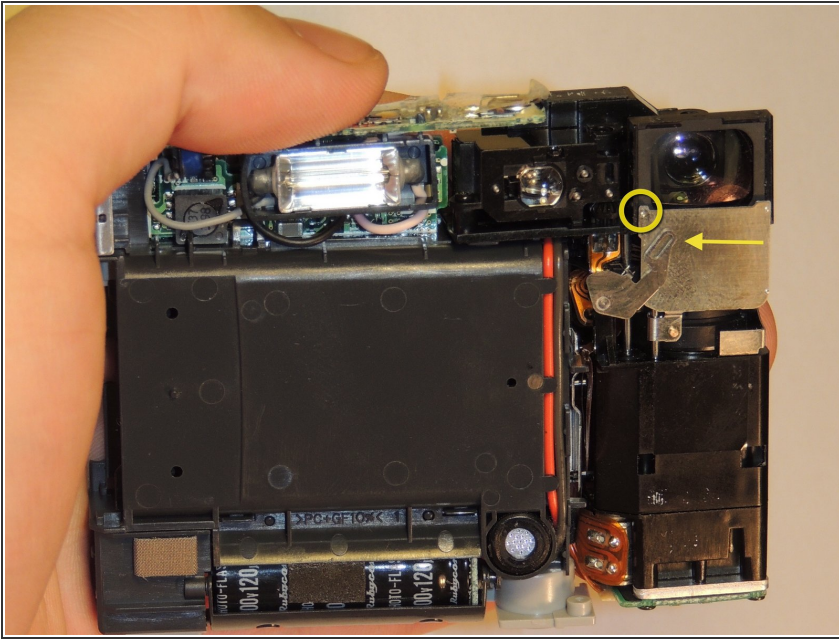
- Locate and remove the silver screws on each side of the camera.
- ⓘ Use the Phillips #00 Screwdriver to unscrew all 2.0mm (4 instances) and 4.0mm (2 instances) screws.

Step 2



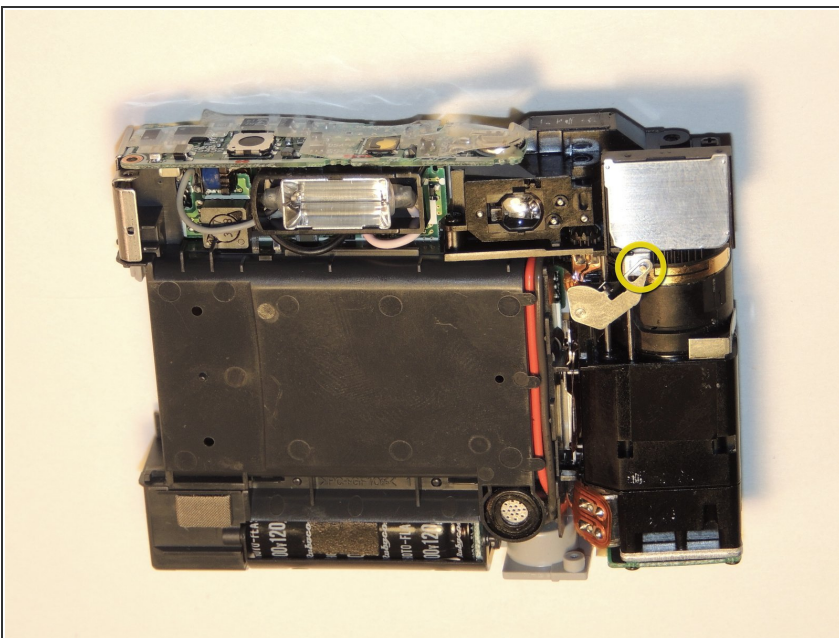
- Then, carefully pry apart the front and back outer casing away from the internal components.
- ⚠ Be aware of the ribbon wire that will disconnect when the casing is detached.

Step 3 — Lens Cover



- Place the internal electronics face-up. Look at the side with the flash turned towards you.
- The lens cover is a small sheet of metal that rests directly in front of the lens when the camera is turned off.
- Check to see if the spring action arm (what the yellow arrow is pointing to) is attached to the lens cover with the small knob in the corner (circled in yellow).

Step 4



- If the arm is not attached (as shown in the previous), use tweezers to place the arm over the knob on the lens cover.
- Inside the yellow circle, the arm is in the correct position.

Reassemble the casing by reversing steps 1 and 2.