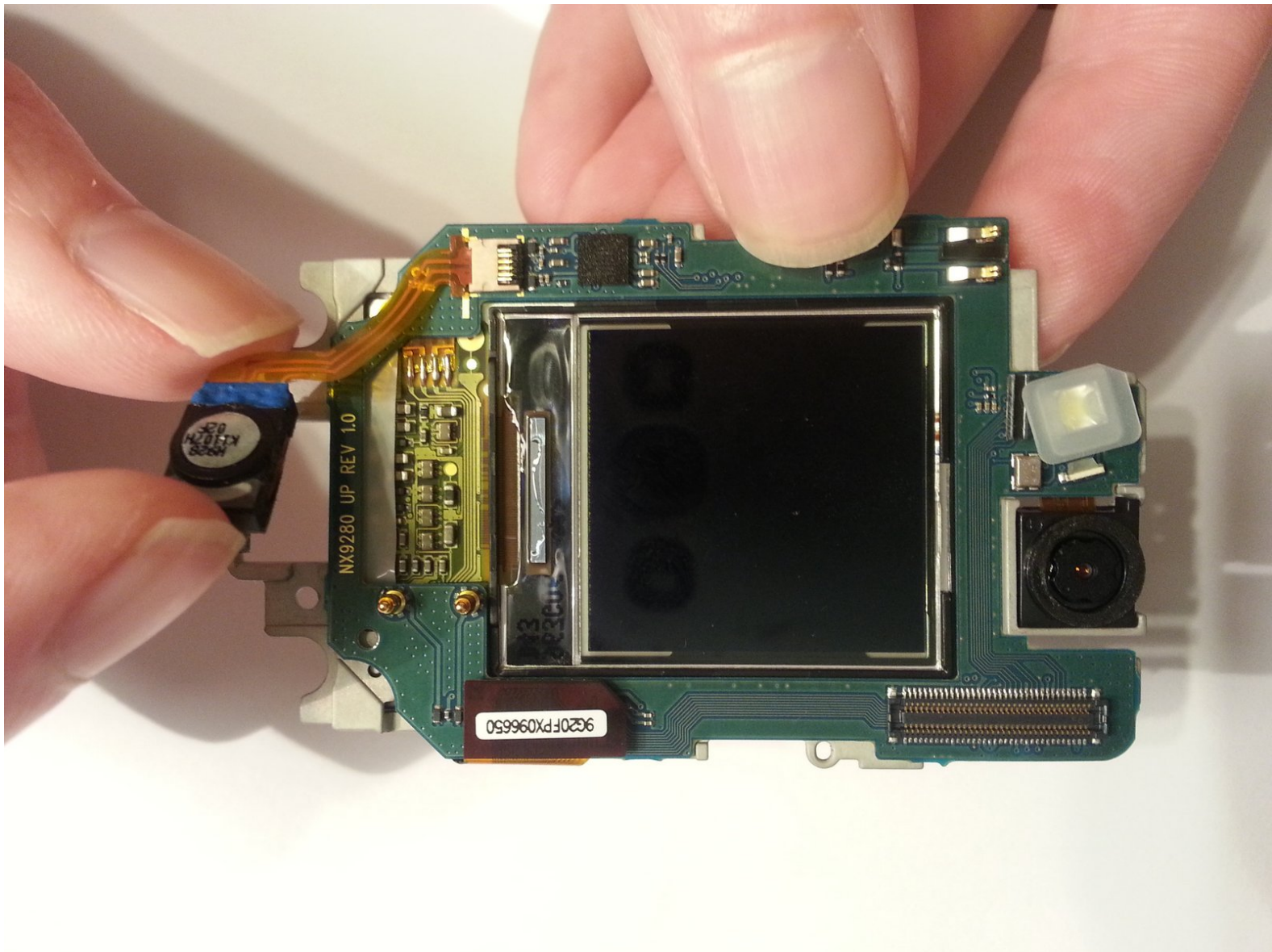




G'z One Boulder Front Ear Speaker Replacement

This guide details how to install the Front Ear Speaker in the event of damage or malfunction of the device.

Written By: Raymond Caulder





TOOLS:

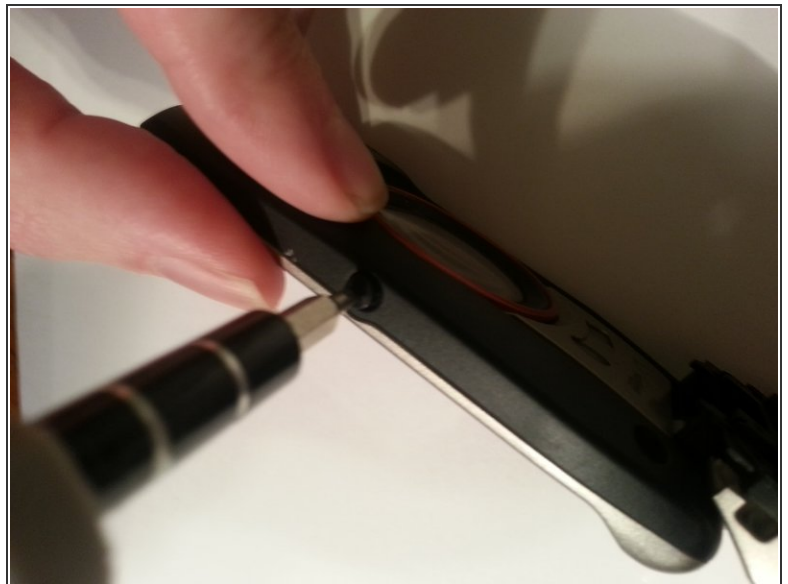
- [Phillips #00 Screwdriver](#) (1)
- [iFixit Opening Tools](#) (1)
- [Flathead 3/32" or 2.5 mm Screwdriver](#) (1)

Step 1 — Inside Screen Cover



- There are 4 black screws that need to be removed on the top of the lid. A 1.5mm flathead screwdriver will work on the star shaped screw heads.
- ⓘ Make note that two of the screws closest to the hinge are longer than the other two.

Step 2



- Remove the two side screws.

⚠ When reassembling you may need to press the front and back of the lid together when inserting these side screws so that the holes align.

Step 3



- Use a plastic opening tool to remove the screen cover from the rest of the lid.

Step 4



- Your phone should look like the picture to the left.

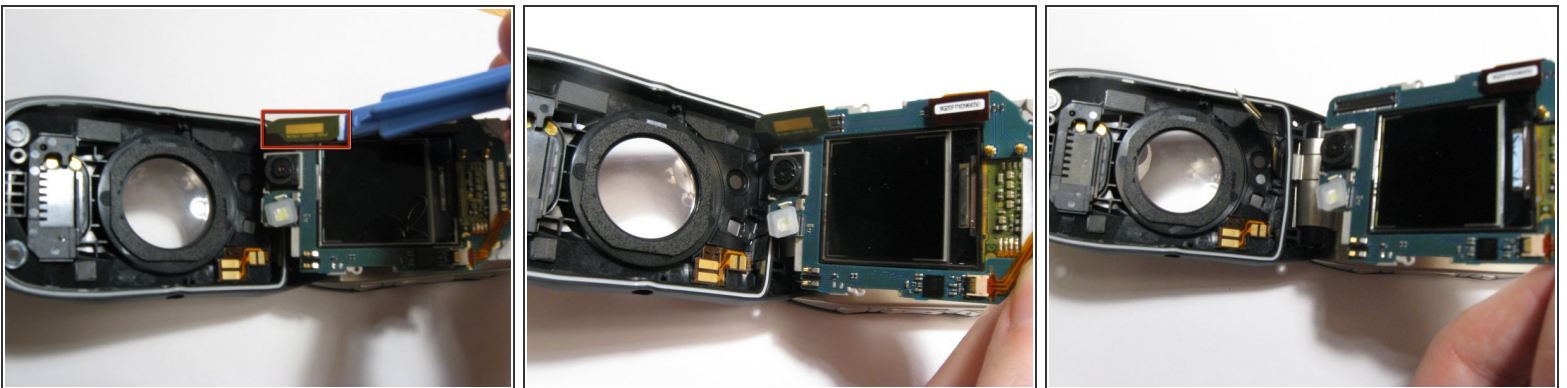
☒ *If reassembling from a previous step make sure the ribbon cable is properly situated before securing the front cover.*

Step 5 — Front Logic Board




- Remove one screw located on the left side of the phone with the pictured orientation in mind.
- This will release the logic board from the back case.
- Lift the board out of the case starting with the top. Continue to fold it forwards to access the ribbon cable still connecting it.

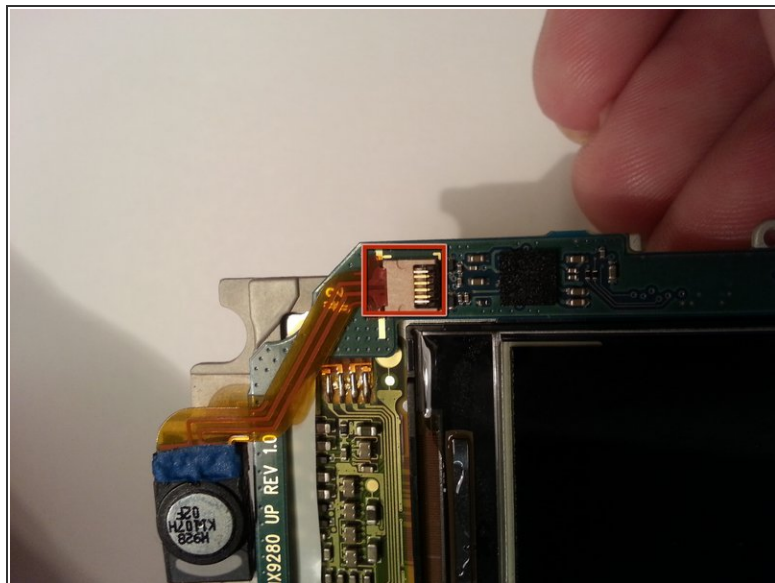
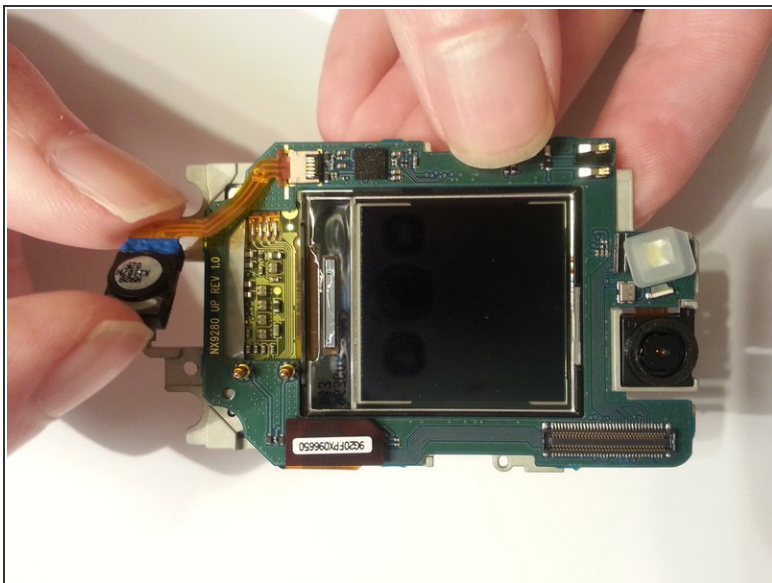
Step 6



- Pull the logic board out with a pry stick gently from bottom to top at the current orientation.
- The ribbon cable will be connected underneath the logic board. A small amount of force is required to disconnect them.

 *Although some force is required to lift up the board, be careful as to not bend any of the pins on either side.*

Step 7 — Front Ear Speaker



- Lift speaker towards yourself out of the white plastic container.
 - Gently unplug the ribbon by pulling it to the left with the pictured orientation in mind.
- i** *Be careful when unplugging connector as the ribbon connecting piece is extremely fragile. '*

To reassemble your device, follow these instructions in reverse order.