



How to Fix PS4 Controller Analog Drift (R3 or L3 not working)

This is a guide for a Sony DualShock 4...

Written By: Sabih Akram



INTRODUCTION

This is a guide for a Sony DualShock 4 PlayStation 4 Controller and can be used on any other companies' controllers (Scuf or Custom Controllers).

This procedure will help fix an R3 or L3 button on a controller that is not working properly or is having issues when trying to move.

Take care during this whole operation as these are very small and sensitive parts, but be very careful in Steps 1 and 2 to not damage any wires that connect the controller and the battery, as well as while reassembling.

TOOLS:

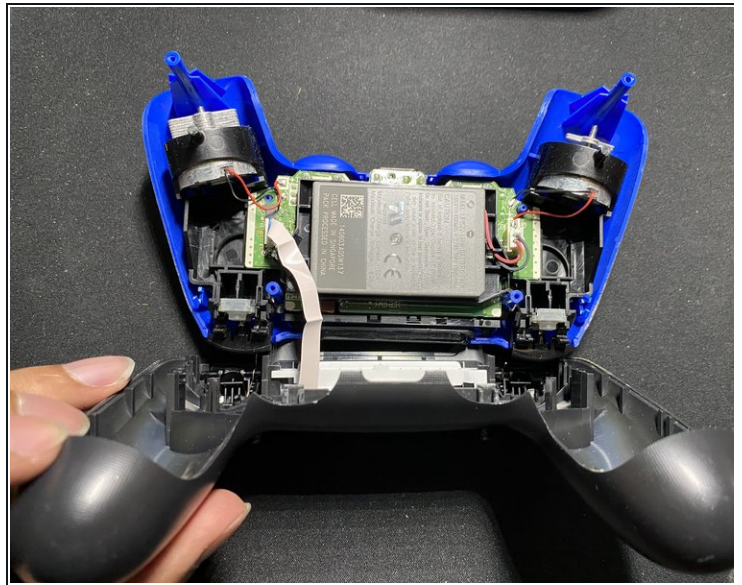
Phillips #0 Screwdriver (1)

Cotton Swabs (1)

High Content Rubbing Alcohol (1)

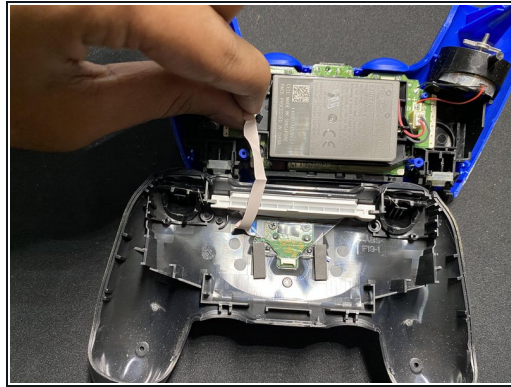
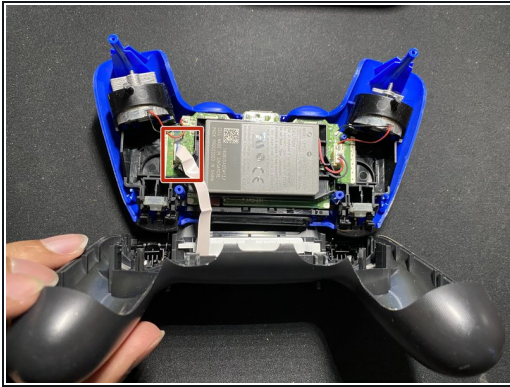
Spudger (1)

Step 1 — How to Fix PS4 Controller Analog Drift (R3 or L3 not working)



- Remove the four screws from the back of your controller using a Phillips #0 screwdriver.
- Separate the front and the back of the controller.

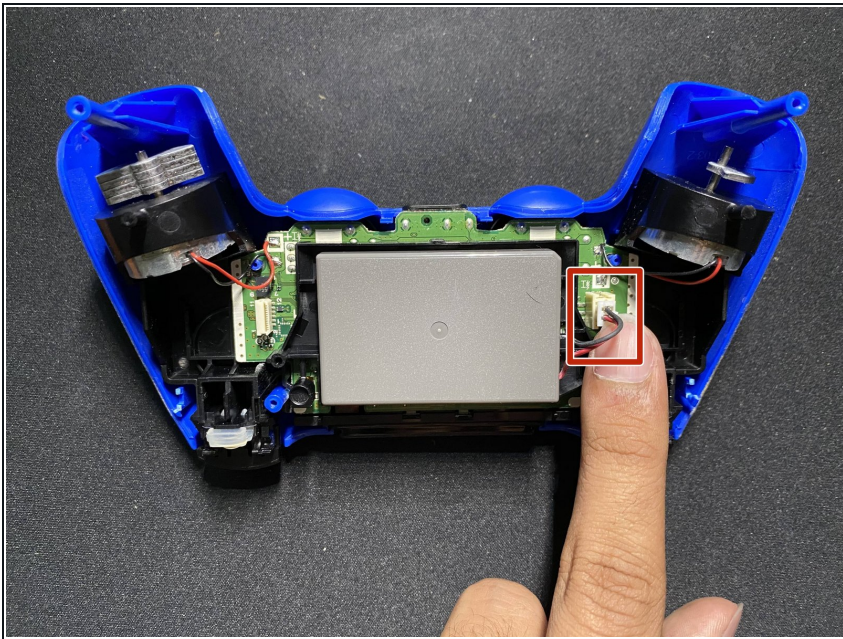
Step 2



- Unplug the ribbon cable to disconnect the Micro-USB Type B port from the controller itself.

⚠ Be careful not to tear or damage the cable.

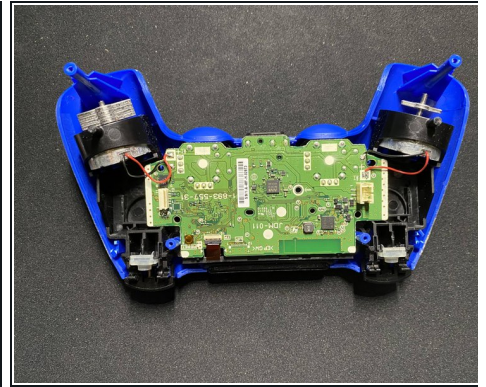
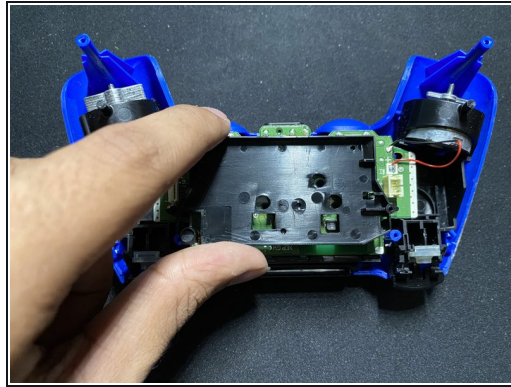
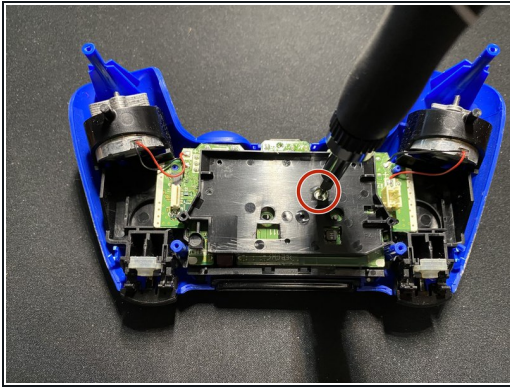
Step 3



- Unplug the battery from the controller and take it out.

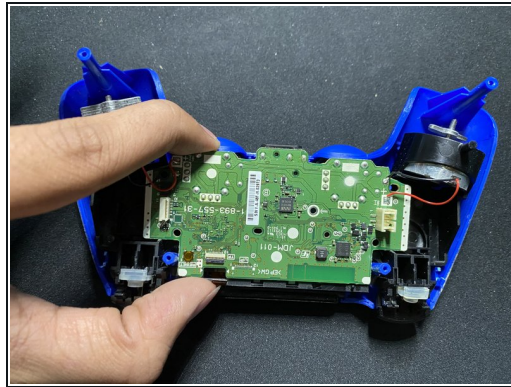
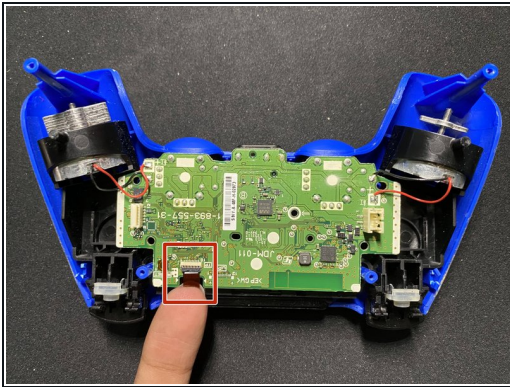
⚠ Be careful not to tear or damage the wire as this is an important component for your controller.

Step 4



- Remove the single screw from the black plate covering the motherboard using a Phillips #0 screwdriver.
- Remove the black plate from the controller.

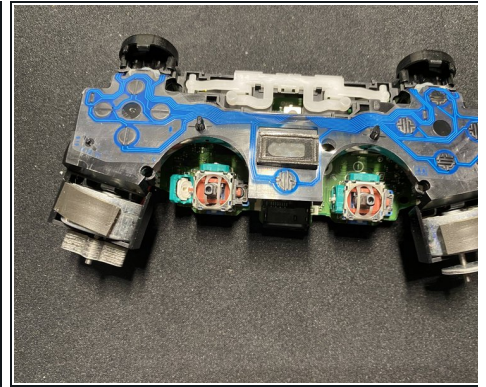
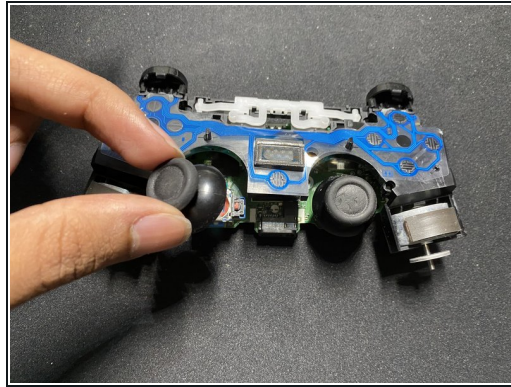
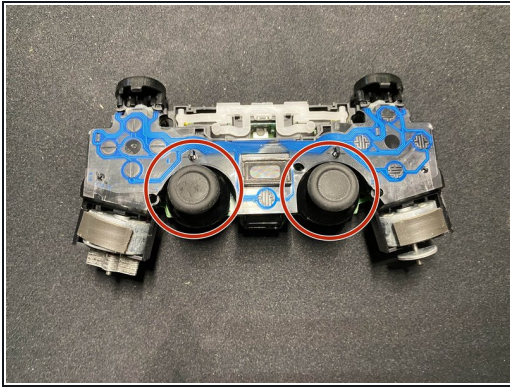
Step 5



- Disconnect the ribbon cable that connects the back of the controller to the motherboard.
- Remove the motherboard from the back of the controller.

⚠ Be careful not to tear or damage this wire as it is important for your controller.

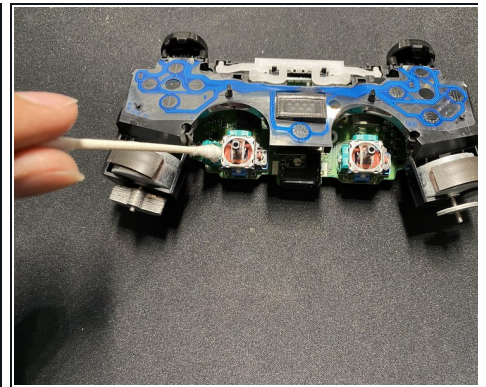
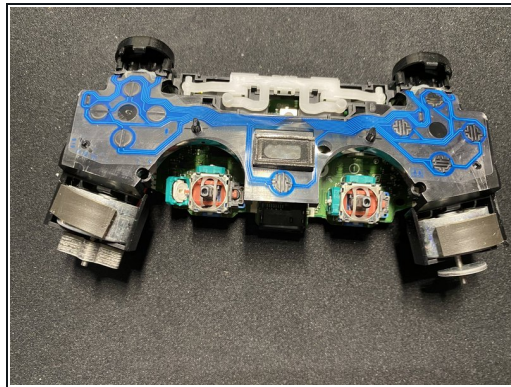
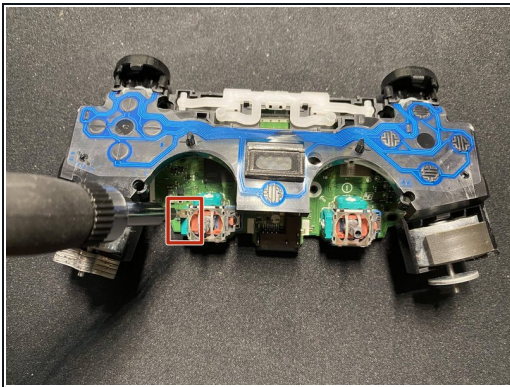
Step 6



- Remove the toggle sticks from the controller.

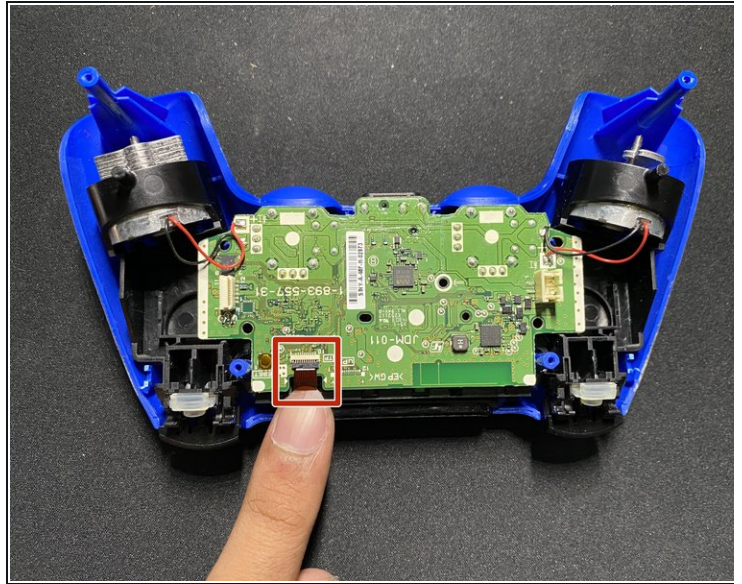
⚠ Be careful of the sensors as they are very sensitive.

Step 7



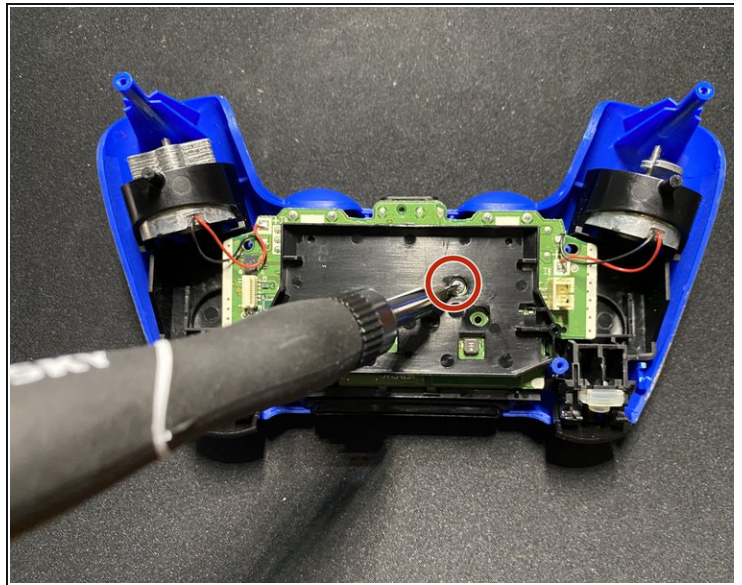
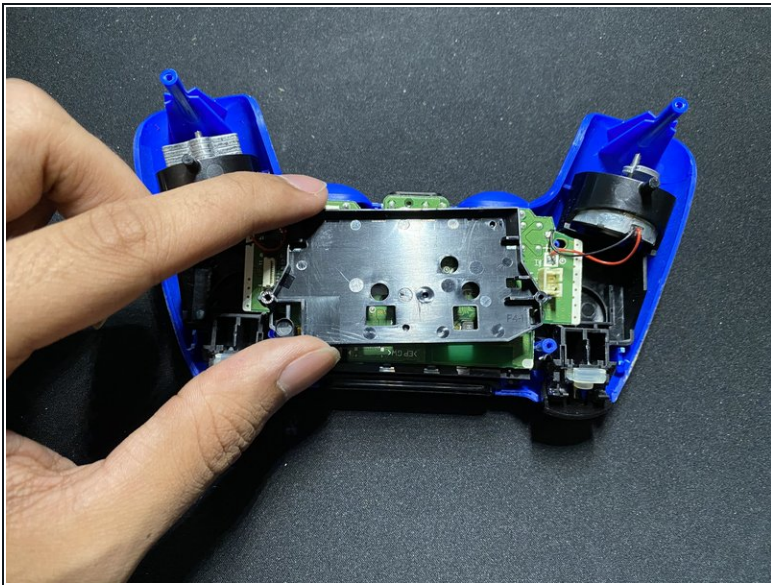
- Use a spudger to pry open the toggle stick sensor.
- Use a cotton swab with a little bit of rubbing alcohol to remove the grease and build-up from the sensor.

Step 8



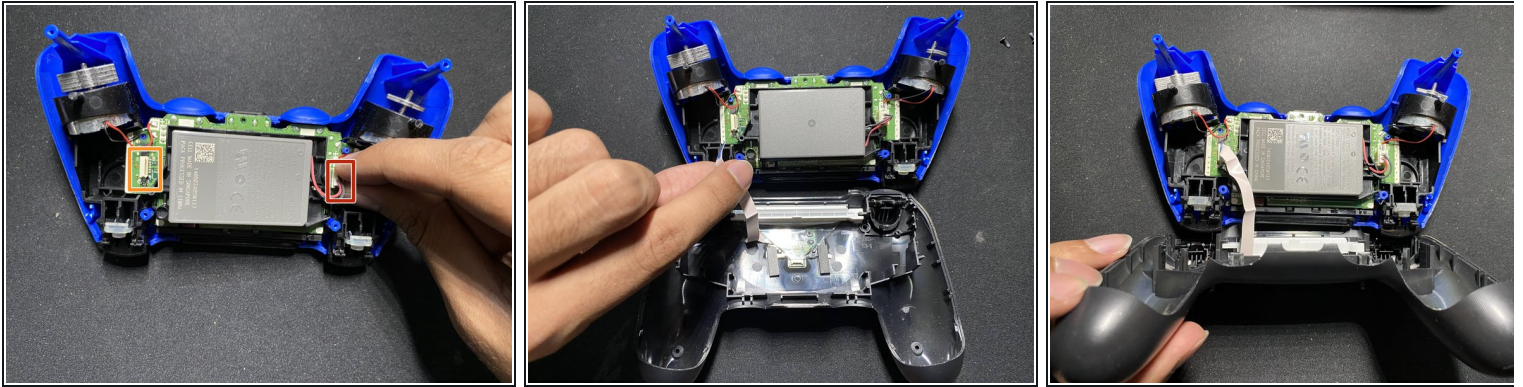
- To reassemble the controller, place the back cover onto the motherboard.
- Slip the red wire through the controller cover and plug it in.

Step 9



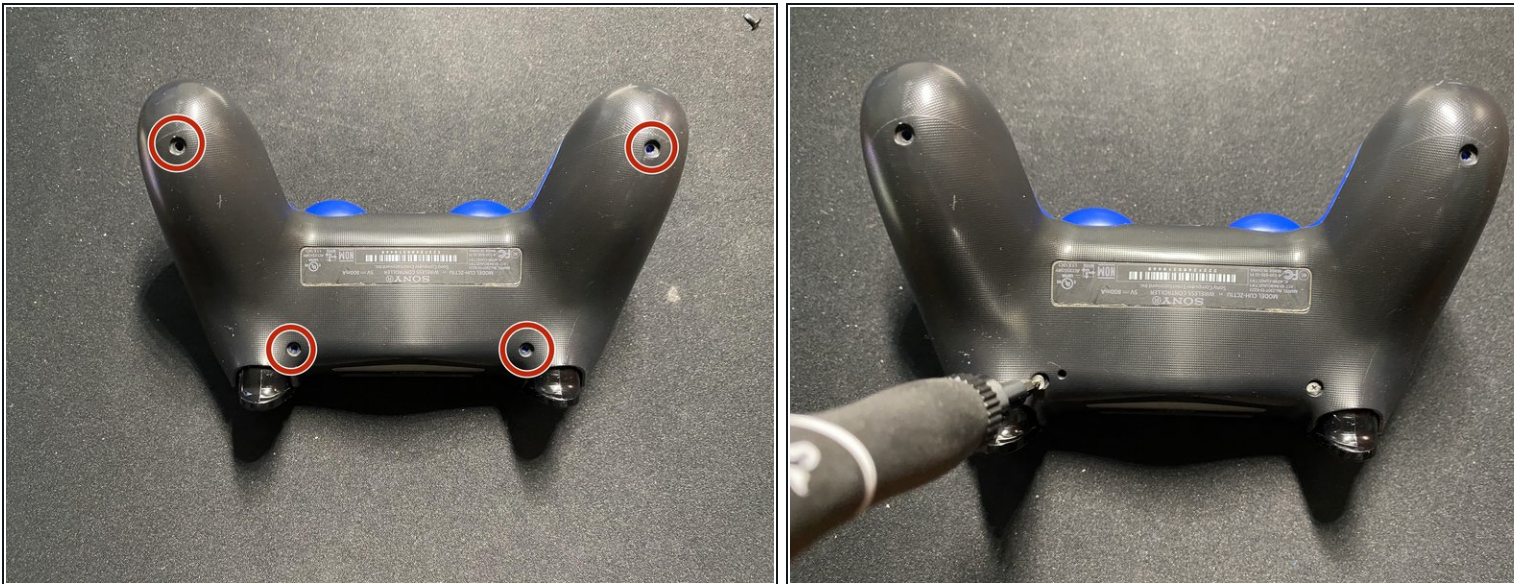
- Put the black plate back on top of the motherboard and screw it in.
- ⓘ Make sure the back of the controller and the motherboard are firmly connected.

Step 10



- Plug the battery back in and put it in its place.
- Plug the white wire back into the motherboard.

Step 11



- Connect the front cover and the back cover of the controller and screw the four screws back in.

Step 12



- You're all done.