



HP Prime Graphing Calculator G8X92A

Motherboard/Display Replacement

This guide provides instructions to replace the motherboard and display for the HP Prime Graphing Calculator G8X92A.

Written By: Eric A Bidema



INTRODUCTION

This Guide provides detailed instruction on HP Prime motherboard/ display replacement for the HP Prime graphing calculator G8X92AA. The motherboard/display is dual sided with one side the motherboard and the other side the display. If the display fails to produce an image you may need to replace the motherboard/display.



TOOLS:

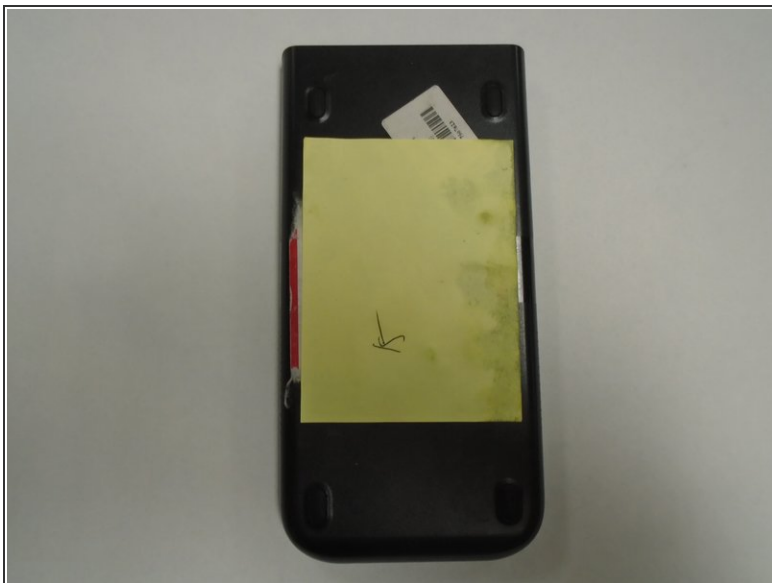
- [Tweezers](#) (1)
- [Spudger](#) (1)
- [Phillips #00 Screwdriver](#) (1)
- [iFixit Opening Tools](#) (1)



PARTS:

- [HP Prime Graphing Calculator Button Panel](#) (1)
- [HP Prime Graphing Calculator Adhesive Strips](#) (1)
- [iFixit Adhesive Remover \(for Battery, Screen, and Glass Adhesive\)](#) (1)
- [HP Prime Graphing Calculator LED display and Motherboard](#) (1)

Step 1 — Battery



- Power down the device.
- Flip the device face side down so the back of the device is facing up.

Step 2



- Using a Phillips #00 screwdriver, remove the two 4.5 mm screws securing the battery cover located at the bottom center of the device.
- Remove the cover.

Step 3



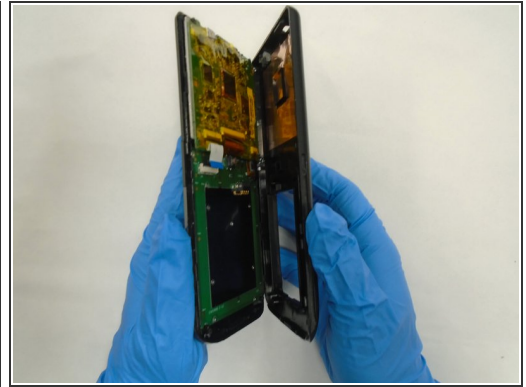
- Remove the battery.

Step 4 — Button Panel



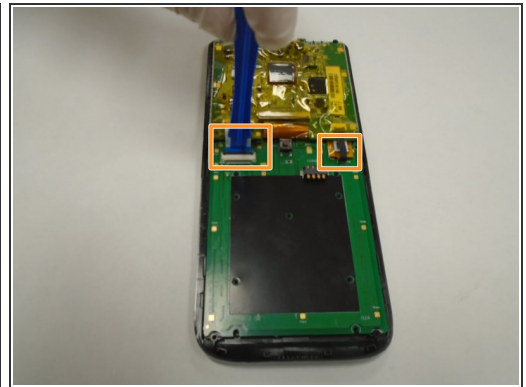
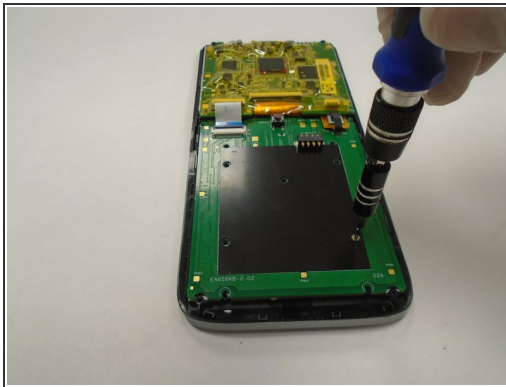
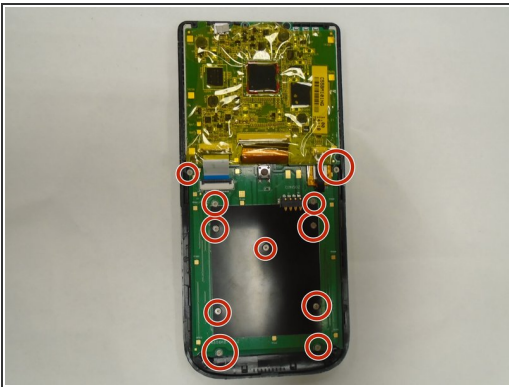
- Using a Phillips #00 screwdriver, remove the four 4.5 mm screws securing the back panel to the device.

Step 5



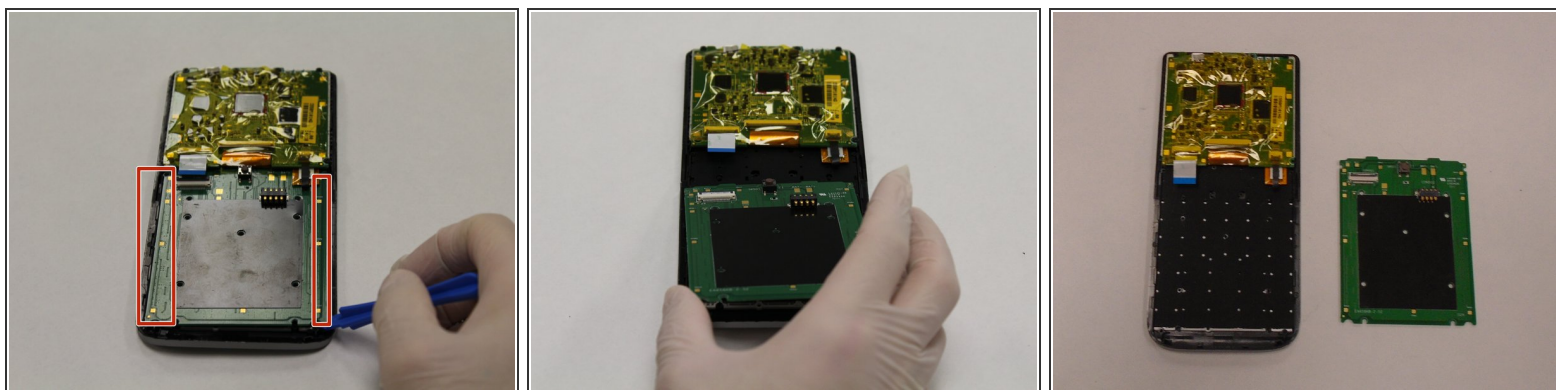
- Using a spudger, gently pry apart the front and back panels.

Step 6



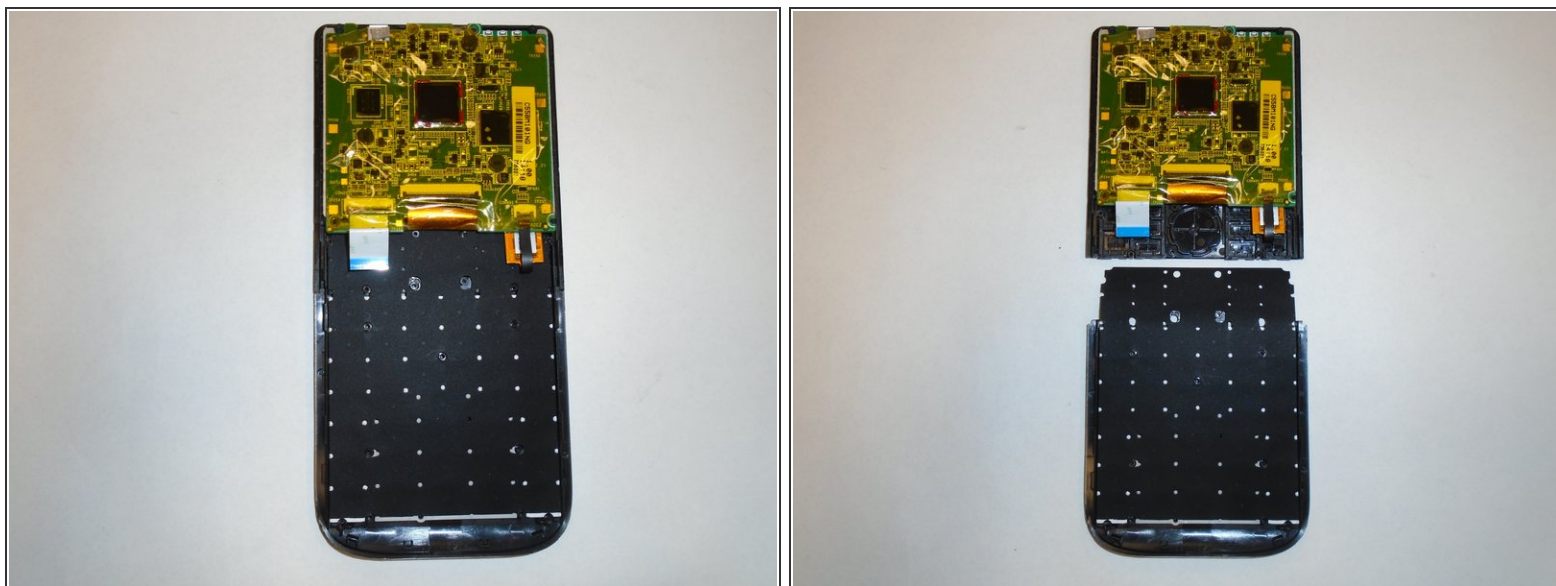
- Using a Phillips #00 screwdriver, remove the eleven 3 mm screws securing the battery board/button panel located at the bottom half of the device.
- Using a plastic opening tool, gently pry the retaining clip securing the ribbon cable to the top-left side of the board.
- Using plastic tweezers, gently unplug the ribbon cable from the board.

Step 7



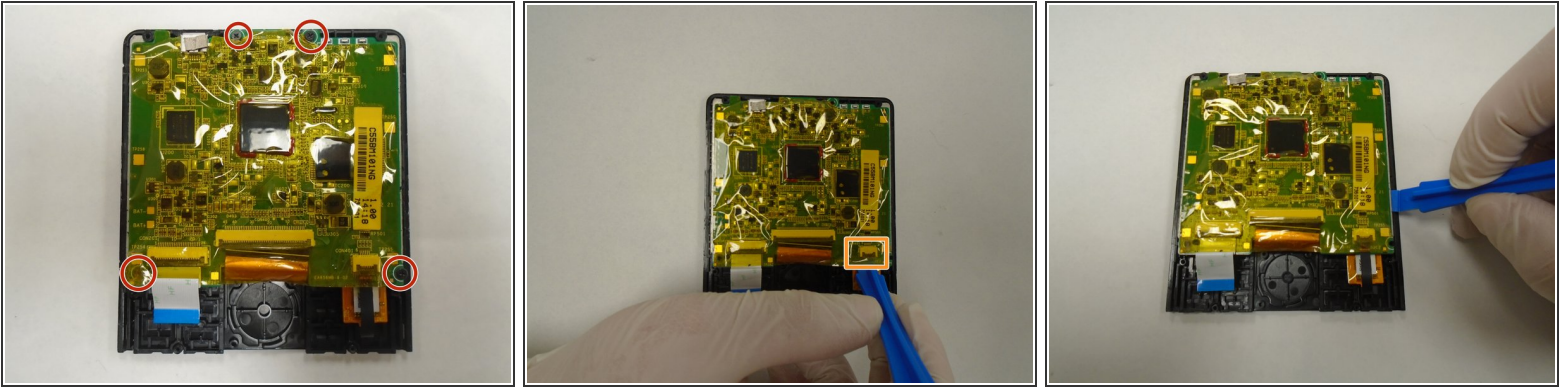
- Using a plastic opening tool, gently pry upward on the battery board/button panel from the bottom to remove.

Step 8 — Motherboard/Display



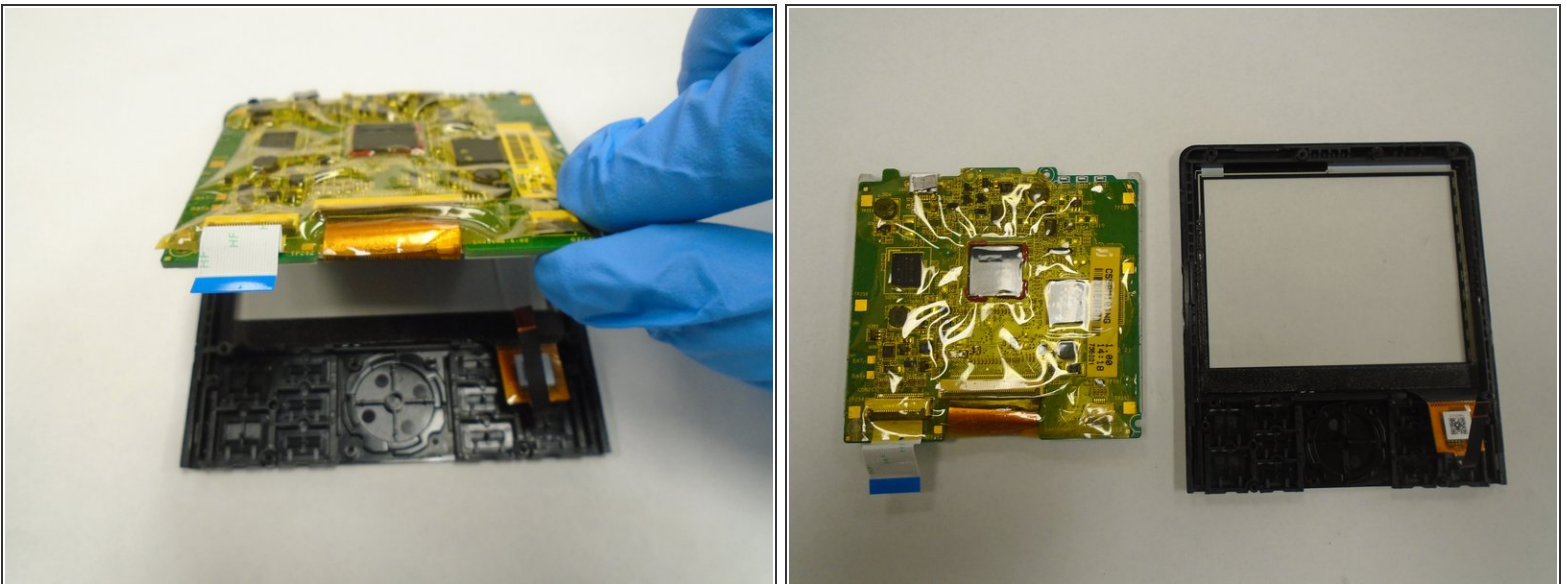
- Remove the lower component from the motherboard

Step 9



- Using a Phillips #00 screwdriver, remove the four screws securing the motherboard/display to the front panel.
- Using a plastic opening tool, pry up the locking tab of the ZIF connector on the right side of the device and pull out the ribbon cable.
- Using a plastic opening tool, gently pry apart the motherboard and the front panel.

Step 10



- Remove the motherboard from the display.

To reassemble your device, follow these instructions in reverse order.