



Battery Disconnect

How to disconnect the battery in your Galaxy A10e.

Written By: Thomas Boland



INTRODUCTION

Prereq for disconnecting the battery of your Samsung Galaxy A10e.



TOOLS:

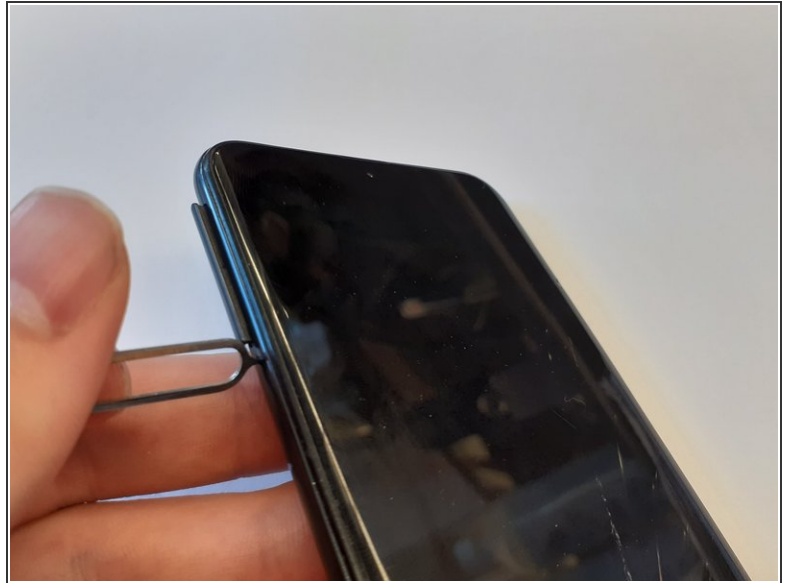
- [Spudger](#) (1)
- [Phillips #00 Screwdriver](#) (1)
- [SIM Card Eject Tool](#) (1)
- [1 x Opening Picks](#) (1)



PARTS:

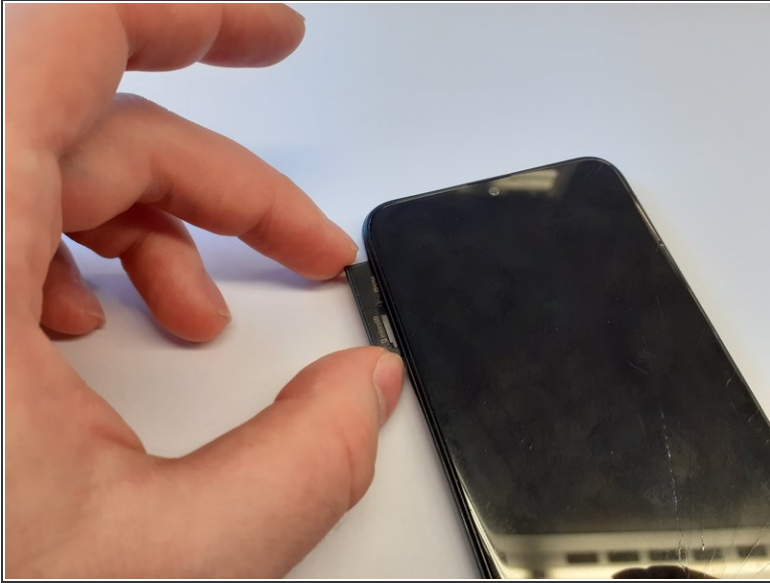
- [Galaxy A10e Motherboard Cover](#) (1)
- [Galaxy A10e SIM Card Tray](#) (1)
- [Galaxy A10e Rear Cover](#) (1)

Step 1 — SIM Card



- Insert a SIM card eject tool, bit, or a straightened paperclip into the small hole in the SIM card tray.
- Press to eject the tray.

Step 2



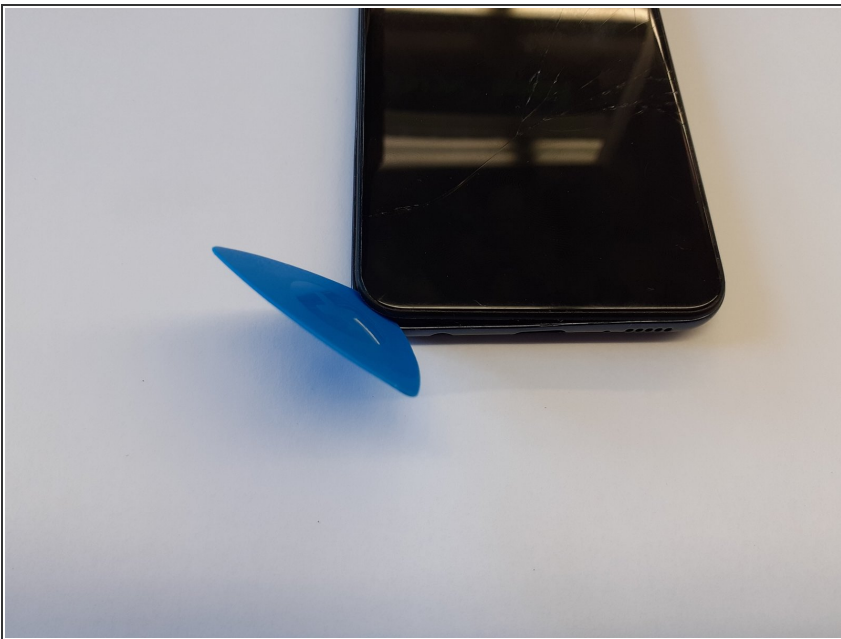
- Remove the SIM card tray from the phone.
 - ⓘ The SIM card(s) and SD card will fall out of the tray easily.
- ✦ When reinserting the tray, ensure the SIM card and SD card are in the correct slots and oriented correctly.
- ✦ For dual-SIM versions of this phone, there may be two SIM cards. Ensure the SIM cards are placed in the slots corresponding to the correct phone lines.

Step 3 — Back Cover



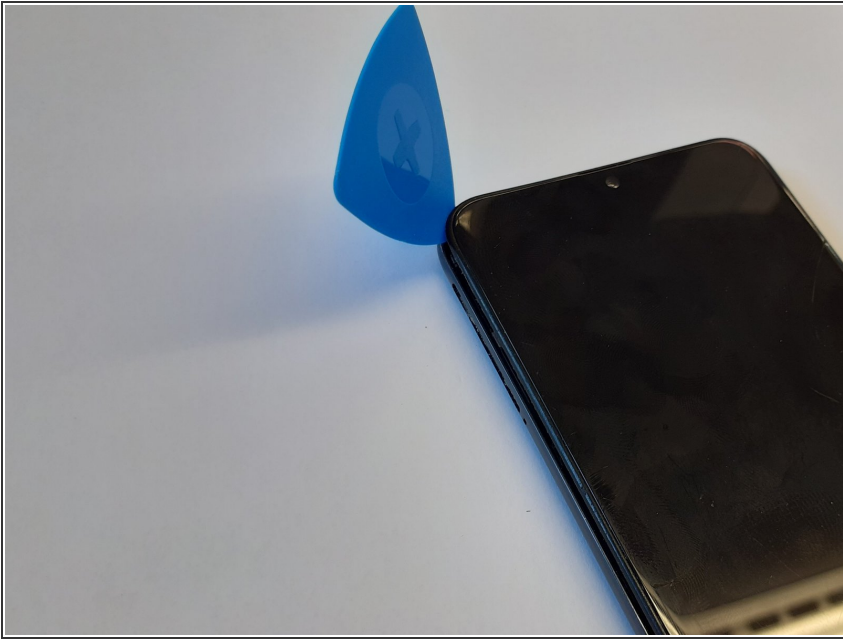
- **i** The back cover is held in place by plastic clips.
- Insert an opening pick between the screen and the back cover on the bottom of the phone where the charging port is located.

Step 4



- Slide the opening pick to the bottom left corner to release the clips.

Step 5



- Slide the opening pick along the left edge to the top left corner of the phone, to release the clips.

Step 6



- Slide the opening pick from the top left corner to the top right corner to release the plastic clips.

Step 7



- Slide the opening pick from the top right corner to the bottom right corner to release the remaining clips.

Step 8



- Remove the back cover.

Step 9 — Motherboard Cover



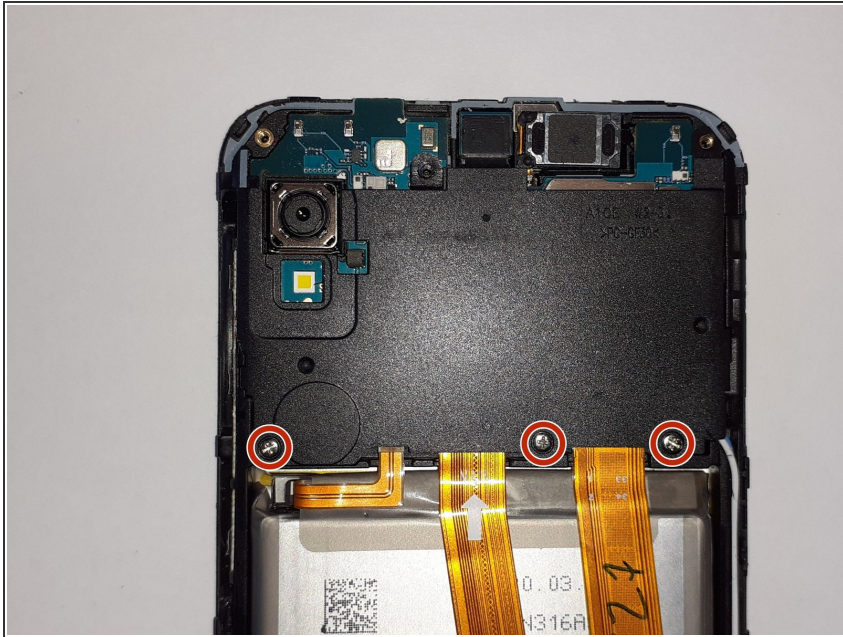
- Remove screws from the motherboard antenna cover.
- 3 Phillips #00, 3mm length.

Step 10



- Use the tip of a spudger or tweezers to remove the antenna cover.

Step 11



- Remove screws from the motherboard cover.
- 3 Phillips #00, 3mm length

Step 12



- Use the tip of a spudger or tweezers to remove the motherboard cover.

Step 13 — Battery Disconnect



- Use a spudger to disconnect the battery by prying the connector straight up from its socket.

Step 14



- Gently flex the battery connector away from its socket.

To reassemble your device, follow these instructions in reverse order.