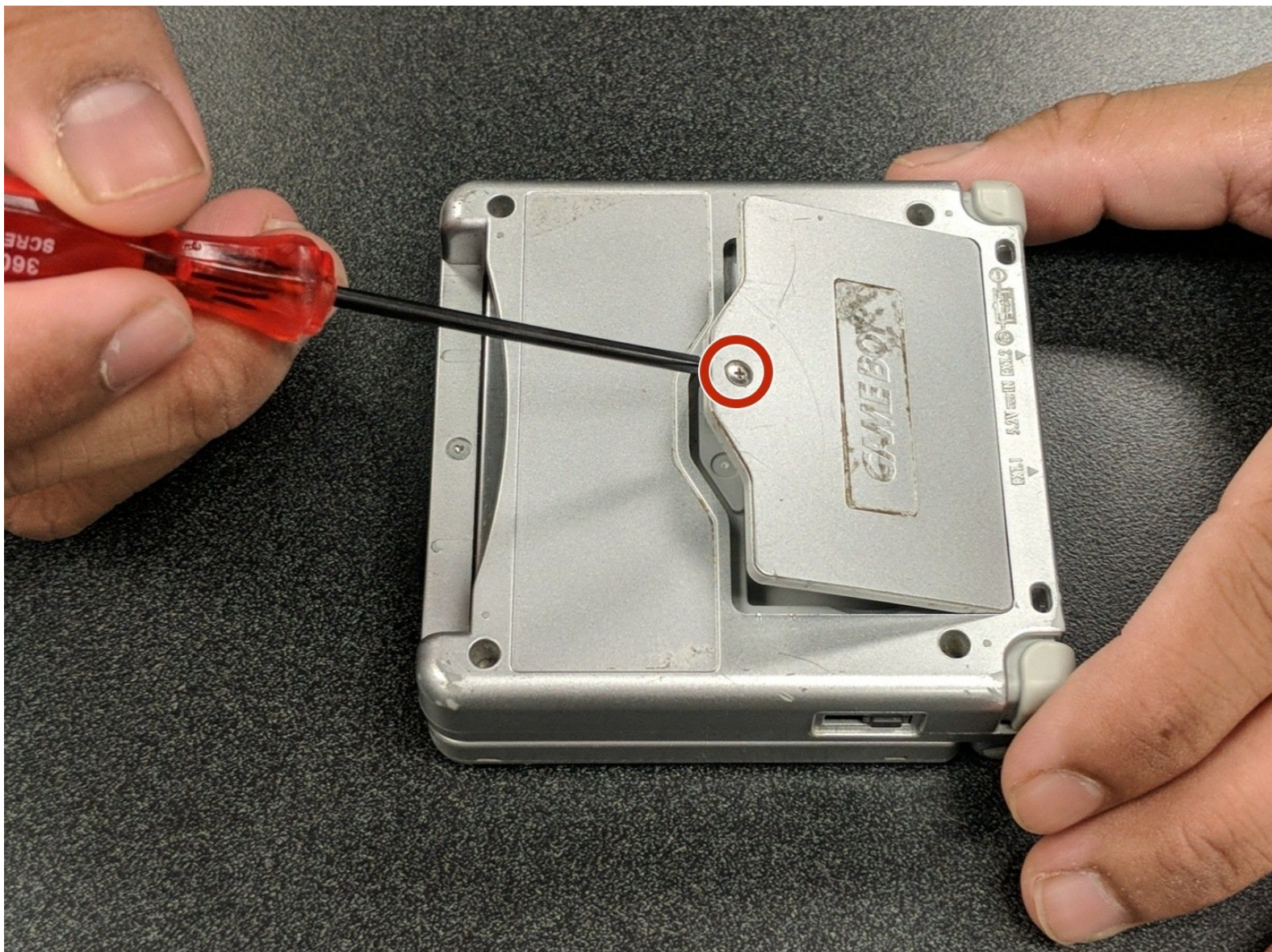




# Nintendo Game Boy Advance SP Shell Replacement

This guide will detail how to disassemble a Game boy Advance SP and reassemble it inside of a new shell.

Written By: Rocko Bishop



## INTRODUCTION

If your GameBoy Advance SP AGS-001 or AGS-101 has a deteriorating shell, or if you're looking to customize it, use this guide to replace the shell.

Before using this guide, plug in your console and charge it for a few minutes. If the battery is too old, it may start expanding and could potentially explode. If it starts to swell, you'll have to order a replacement battery - which you can find below:

<https://www.amazon.com/Game-Boy-Advance-...>

Before beginning the replacement process, power off your console and unplug it from the outlet if it is plugged in.



### TOOLS:

- [Tri-point Y00 Screwdriver](#) (1)
- [Phillips #00 Screwdriver](#) (1)
- [Spudger](#) (1)

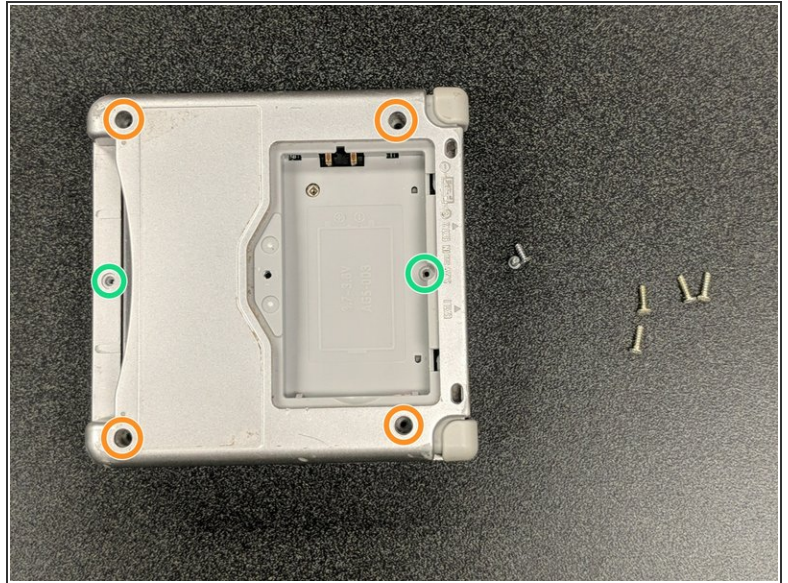
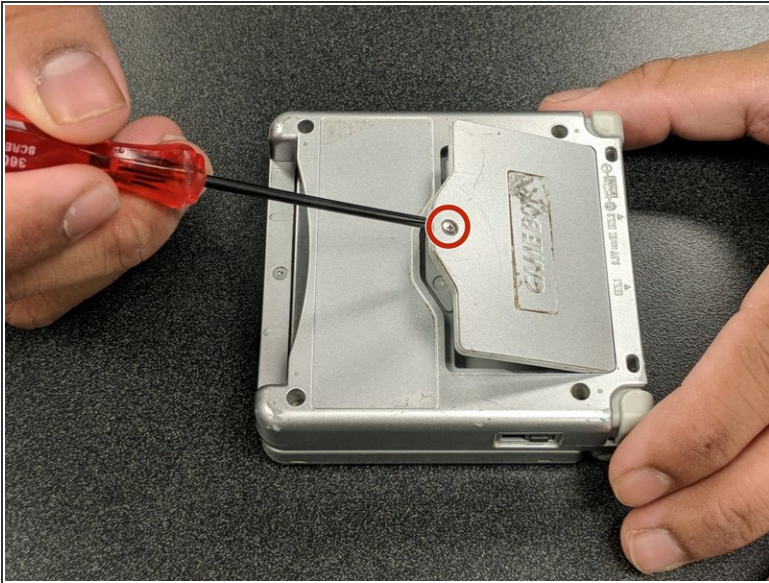


### PARTS:

- [Nintendo Game Boy Advance SP Shell](#) (1)



## Step 1 — Shell



- Unscrew the screw on the battery compartment with a Phillips #00 screwdriver.
- Open the battery compartment and remove the battery.
- Remove the four 6.45 mm Tri-point Y00 screws from the corners of the device.
- Remove the two 4.6 mm Tri-point Y00 screws from inside the battery compartment and game cartridge compartments.

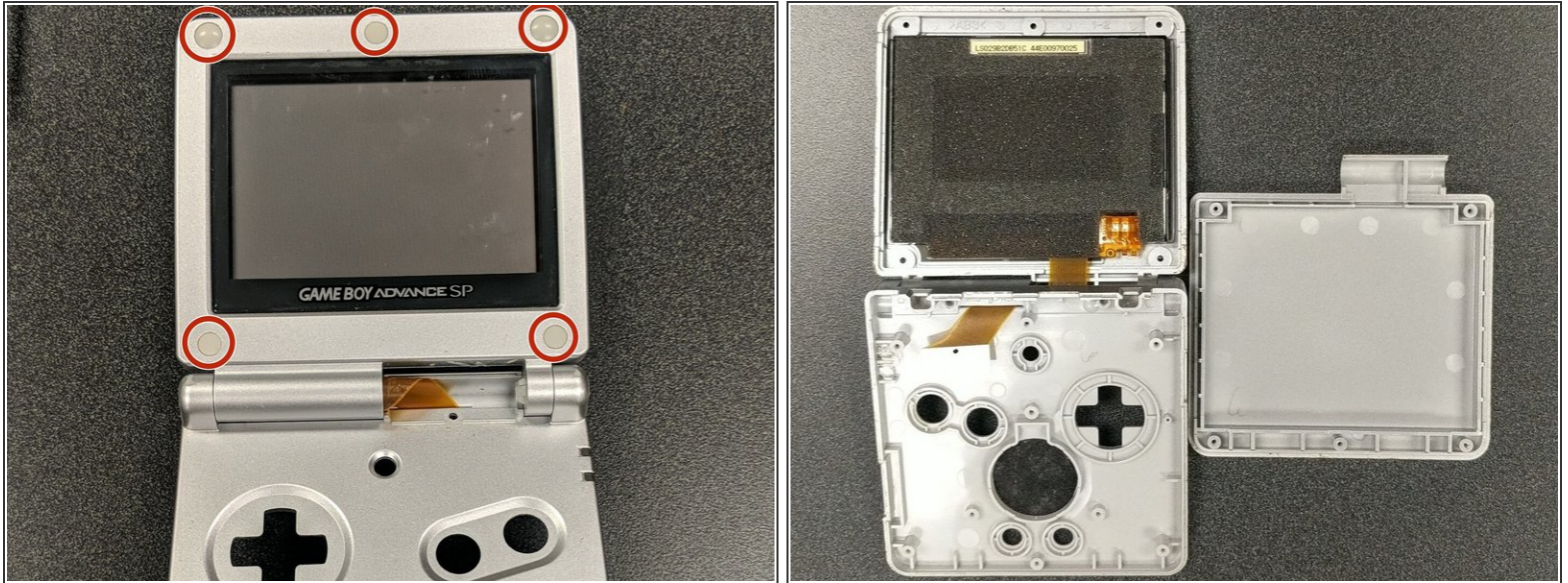
## Step 2



- Lift off the bottom cover to expose the motherboard.
  - ❗ If you need to, use isopropyl alcohol to clean the power and volume sliders.
- Remove the three 4mm Phillips #00 screws from the motherboard.
- Gently lift up the motherboard and remove the ribbon cable by gently pulling the two clips on the side up and towards the cable.
- Remove the small Phillips #00 screw hidden underneath the ribbon cable. It holds the hinge cover of the top screen together.



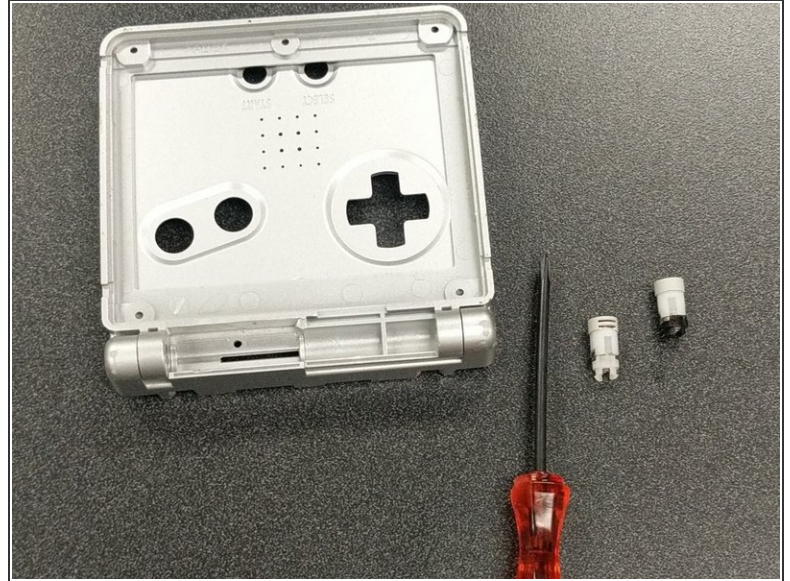
## Step 3



- Open the GBA SP screen and use the pointed end of a spudger to remove the rubber pads around the screen bezel.
- Remove the five Tri-point Y00 screws hidden beneath the rubber pads.
- Remove the bezel from the screen with a spudger.

**⚠ Be careful not to pull on the ribbon cable as the bezel comes off.**

## Step 4



- Remove the hinges from the original shell. This is the most difficult step, as it requires a lot of force to remove the hinges.
- Apply pressure with the pointed end of a spudger from the inside, pushing out with plenty of force. The hinges will likely fly out of the shell a few feet; this is normal.
- Once the hinges are removed, remove the caps on the end of each hinge.

**⚠ Be careful with the spudger. Pushing out the hinges requires a massive amount of force, and you might injure your hand on accident if you do not take extra caution.**



## Step 5



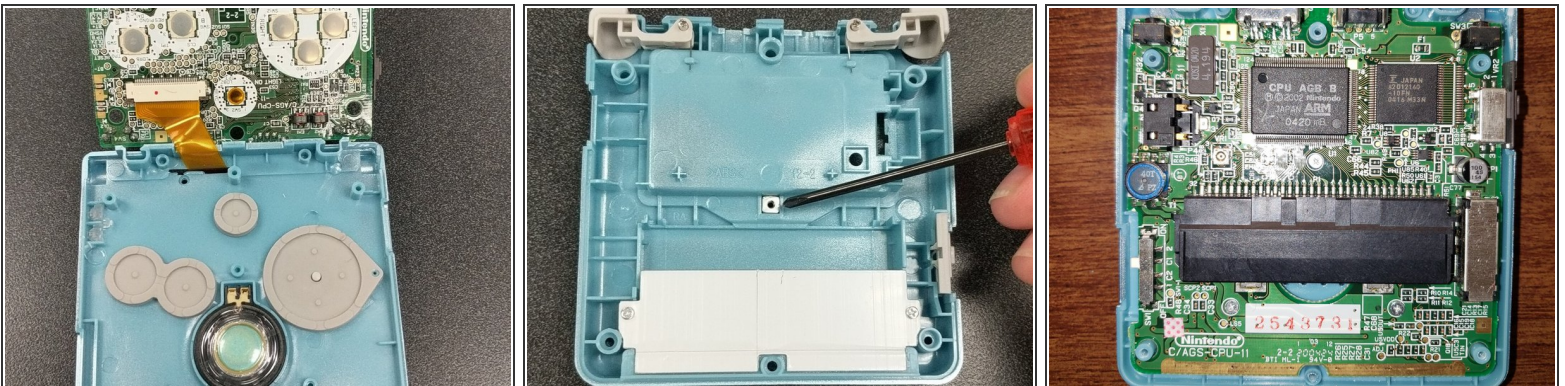
- Take out your replacement shell.
- Push the hinges from the old case into the slot of the new case about halfway while the case is closed.
- Then open the shell and push the hinges the rest of the way in.

## Step 6



- Place your screen into the new shell and affix the bezel into position; the ribbon cable should slide through the gap like before.
- ⓘ The case should click into place so that it stays together even without screws. There also may be a small gap between the top and bottom case, as this is common on third party cases.
- Reinstall the five Tri-point Y00 screws around the screen.
- Reinstall the speaker, buttons, and silicone pads into the bottom case.

## Step 7



- Reinsert the ribbon cable into the motherboard and lock it into place.
- Guide the motherboard into the new case and screw it down with the three 4mm Phillips #00 screws.
- Install the square, threaded washer on the back of the shell. This is where the battery compartment's screw gets held, so it is important!

This document was generated on 2022-05-31 01:40:34 PM (MST).



## Step 8



- Make sure the volume and power sliders are in place before putting the back cover on.
- Put the back cover on and push the two parts together.
- Screw the shell together with the four 6.45 mm Tri-point Y00 and two 4.6 mm Tri-point Y00 screws, then reinstall the battery.

## Step 9



- Reinstall the rubber pads around the screen bezel—they stop the shell from rubbing together on the inside.
- Find the "Nintendo" logo replacement sticker and put it into place.
- Test the console and make sure it works properly!

Rehousing your GBA SP can be a fun project! It doesn't take very long, and once you're done you'll have a fun new customized console! The ease of difficulty and ability to express yourself both make this project well worth attempting.