



Apple Watch Series 6 Screen Replacement

Use this guide to replace a broken, cracked, or...

Written By: Dominik Schnabelrauch



INTRODUCTION

Use this guide to replace a broken, cracked, or defective display on your Apple Watch Series 6.

Replacing the display can cause issues with **Apple Pay**. If possible, to reduce the likelihood of problems, delete all your Apple Pay account info before the replacement, and then re-enter it with the new display installed.

This guide shows the procedure on the cellular/LTE version of the watch, but the standard GPS-only version is similar.

You'll need **replacement adhesive** to reattach components when reassembling the device.

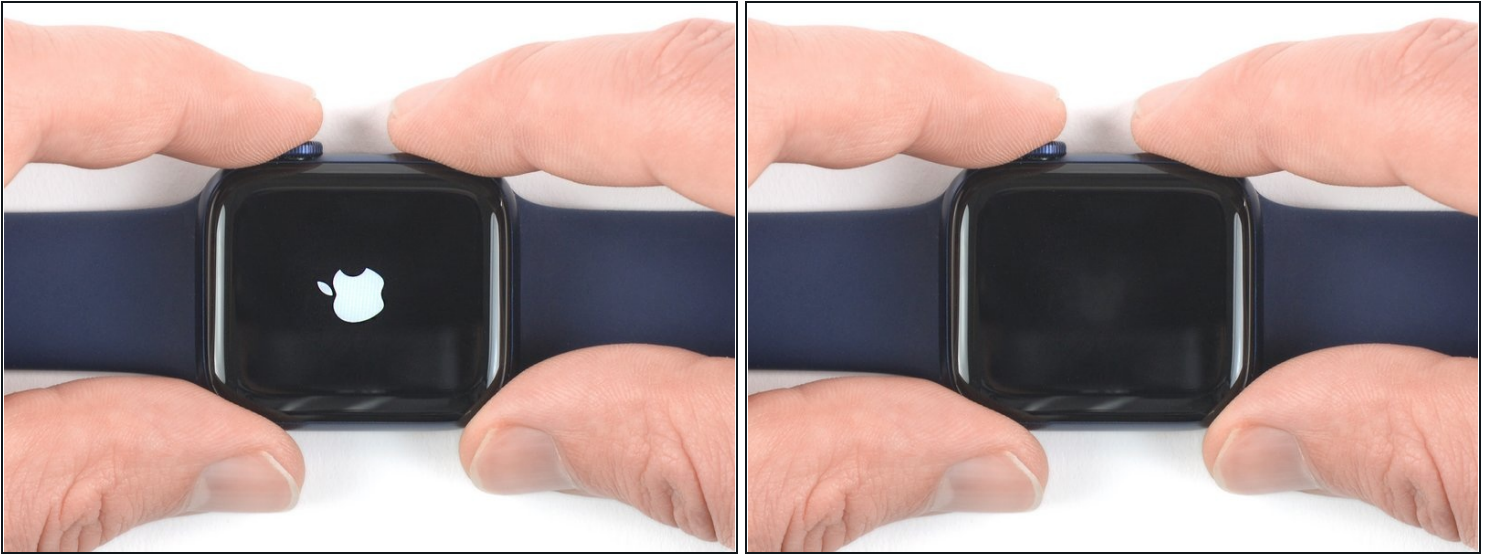
TOOLS:

[iOpener](#) (1)
[iFixit Opening Picks \(Set of 6\)](#) (1)
[Curved Razor Blade](#) (1)
[Safety Glasses](#) (1)
[ESD Gloves](#) (1)
[Tweezers](#) (1)
[Spudger](#) (1)
[Tri-point Y000 Screwdriver](#) (1)

PARTS:

[Tesa 61395 Tape](#) (1)
[Apple Watch \(44 mm Series 6\) Screen](#) (1)
[Apple Watch \(40 mm Series 6\) Screen](#) (1)

Step 1 — Power down the watch



- Before starting repairs, take your watch off the charger and power it down.
 - ① If your touchscreen is broken and you can't power off the watch, [use this alternate method to power it down](#).

Step 2 — Safety Requirements



- Because the gap between the screen and watch body is so thin, a sharp blade is needed to separate the two. **Read the following warnings carefully before proceeding.**
 - ⚠ **Protect your fingers** by keeping them completely clear of the knife. If in doubt, protect your free hand with a heavy glove, such as a leather shop glove or gardening glove.
 - ⚠ Be careful **not to apply too much pressure**, as this might cause the knife to slip and cut you, or damage the watch.
 - ⚠ **Wear eye protection.** The knife or glass may break, sending pieces flying.
- ① Attach or remove the watch band as needed to provide more control as you make repairs.

Step 3 — Soften the display adhesive



- [Prepare an iOpener](#) (or use a hair dryer or heat gun) and heat the face of the watch to loosen the display adhesive.
- Leave the iOpener on the watch for at least two minutes to fully heat the screen and soften the adhesive holding it to the case.

i You may need to reheat the iOpener and repeat this procedure several times until the display adhesive softens.

Step 4 — Display opening



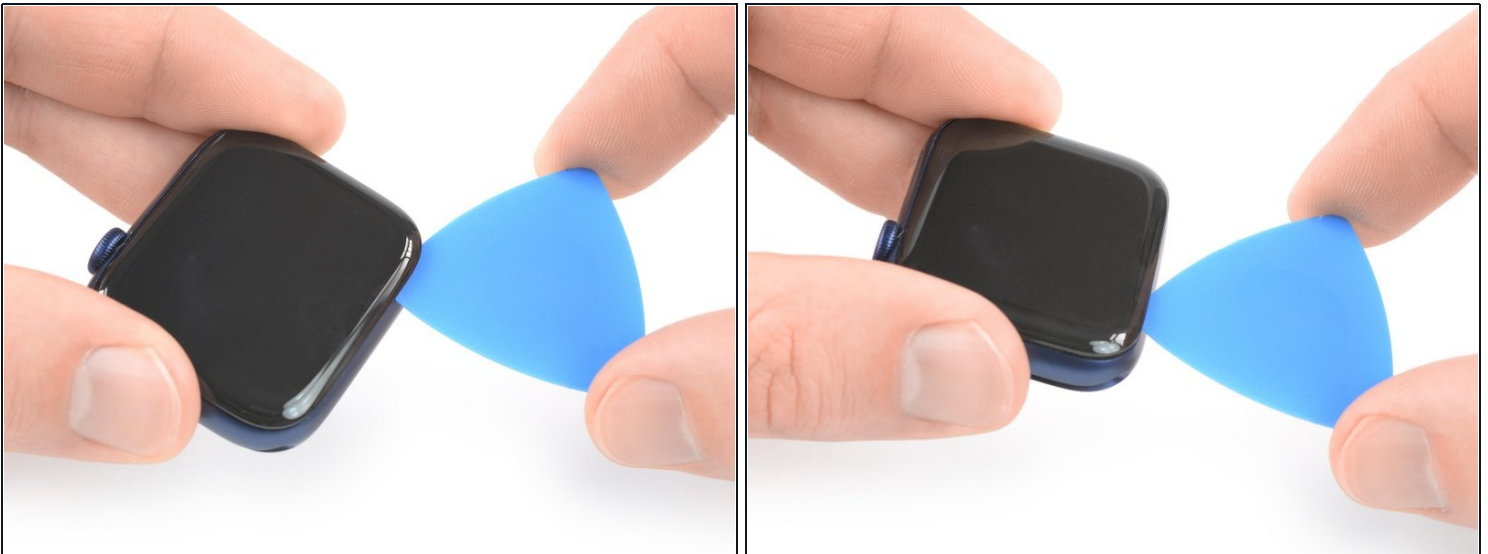
- Place the edge of a curved blade into the thin gap between the display and the outer case. Start at the short side of the display, most distant to the digital crown.
- Press firmly *straight down* into the gap.
- Once inserted, tilt the blade to pry the display open slightly.

Step 5



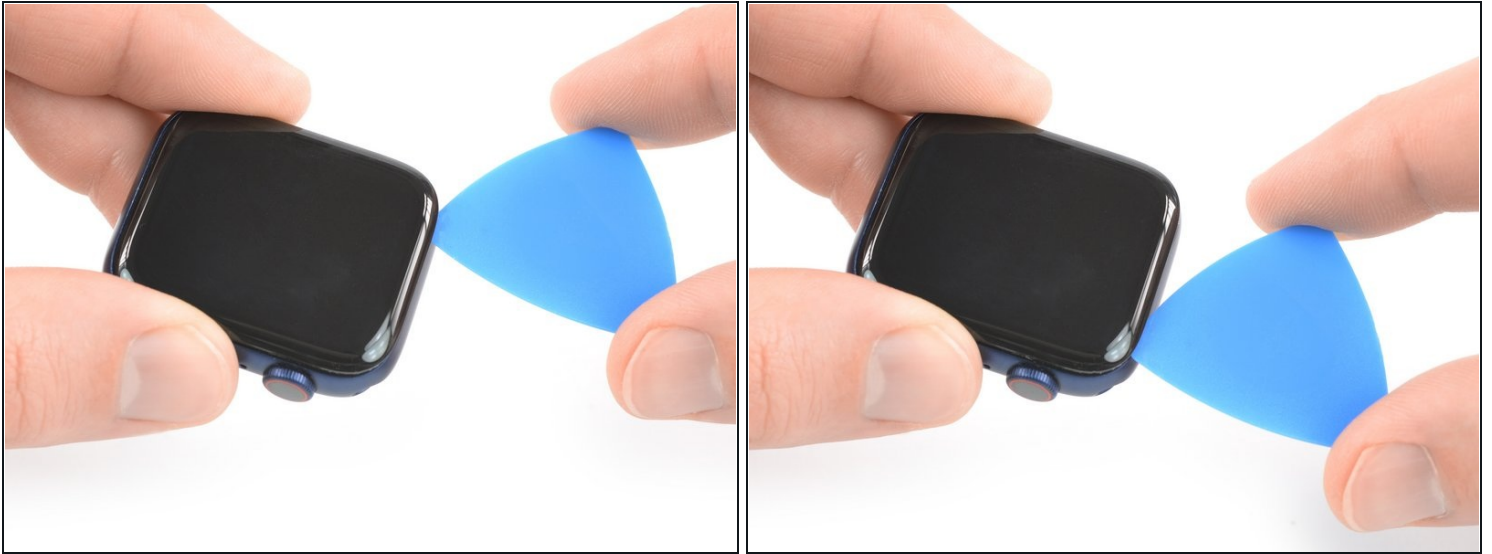
- Insert an opening pick in the gap your created.
- Slide the opening pick along the short edge of the watch to cut the adhesive.

Step 6



- Slide the opening pick around the corner and along the long edge on the opposite side of the watch crown to cut the display adhesive.

Step 7



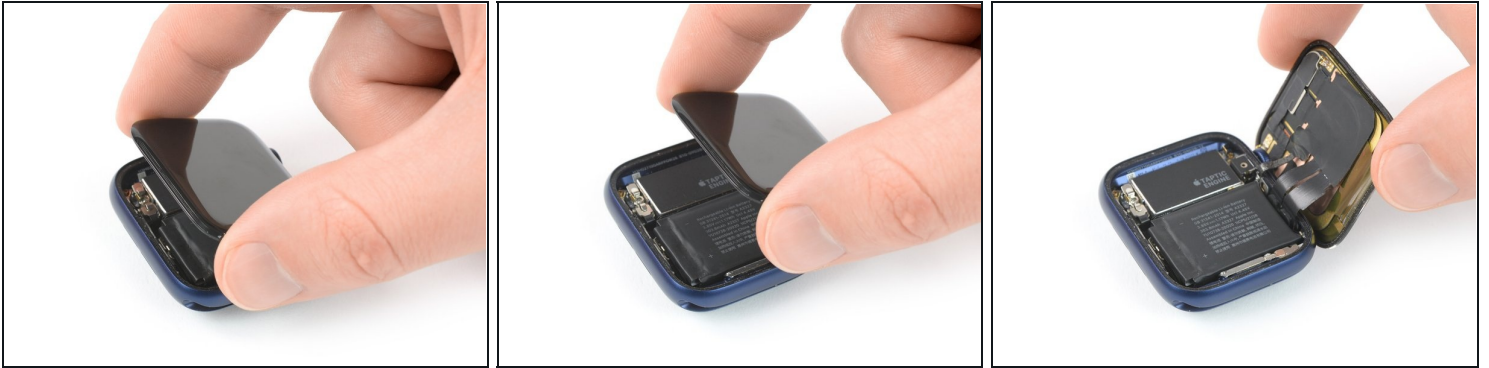
- Slide the opening pick around the corner to cut the remaining adhesive on the short edge of the watch next to the watch crown.

Step 8



- Place the watch on a flat surface and use an opening pick to slice through any remaining adhesive.
 - ⚠ Try not to slice near the watch crown to prevent damaging the display cables. If you must slice near the crown, don't insert the opening pick deeper than 1/16th of an inch (~2 mm).
- Slide an opening pick under the opposite display edge of the watch crown.
- Twist the opening pick to loosen the display off the watch case.
- ⚠ Don't try to remove the display. It is still connected to the watch assembly.

Step 9



⚠ Be careful not to strain the display cables when you fold the display to the side.

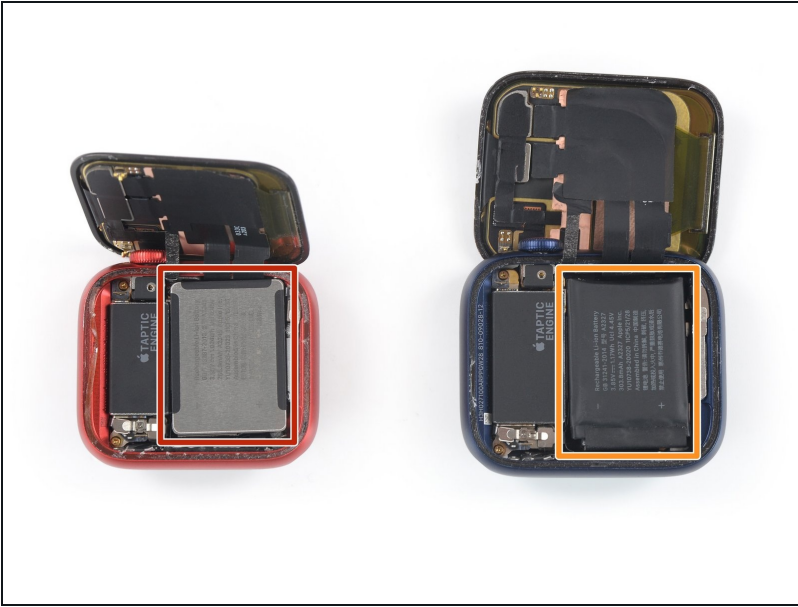
- Lift the display and carefully pull it towards the watch crown.
- Swing the display open to an upward position.

Step 10 — Soften the battery adhesive



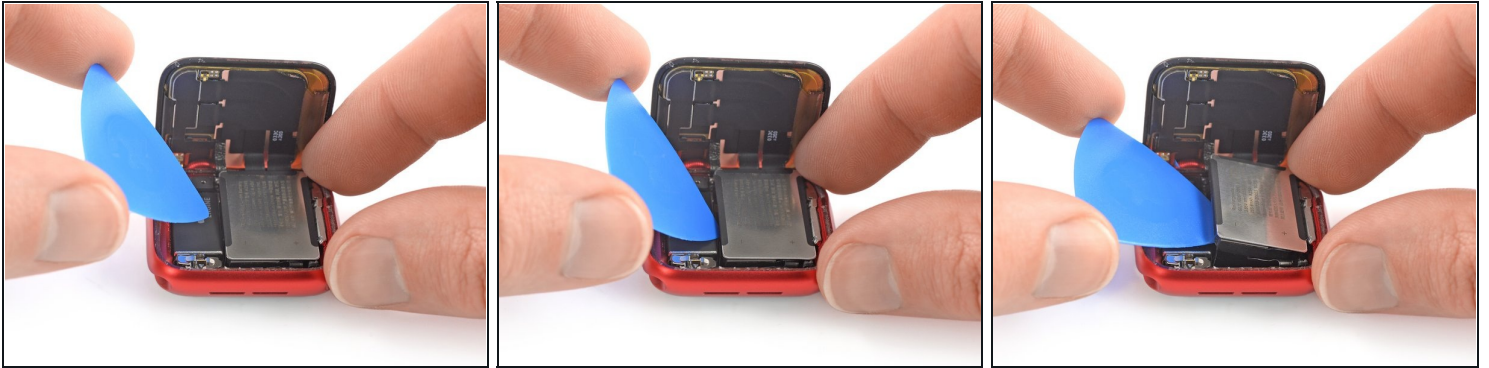
- [Prepare an iOpener](#) (or use a hair dryer or heat gun) and heat the rear side of the watch to loosen the battery adhesive. Leave the iOpener on the watch for at least two minutes.

Step 11 — Determine which procedure to follow



- ① From this point, the battery removal procedure for the 40 mm watch differs slightly from the 44 mm version.
- If you're replacing the battery for a 40 mm watch, continue with [this step](#).
 - If you're replacing the battery for a 44 mm watch, continue with [this step](#).

Step 12 — Pry up the battery



ⓘ The following four steps show how to remove the battery from a **40 mm** Apple Watch Series 6.

- Insert an opening pick between the battery and the Taptic Engine.
- Use constant, steady pressure to slowly pry the battery up, separating it from the adhesive securing it to the mainboard.

⚠ Make sure you don't puncture or deform the battery, as it can catch fire and/or explode if damaged.

⚠ Don't try to remove the battery all the way yet. It is still connected to the watch assembly.

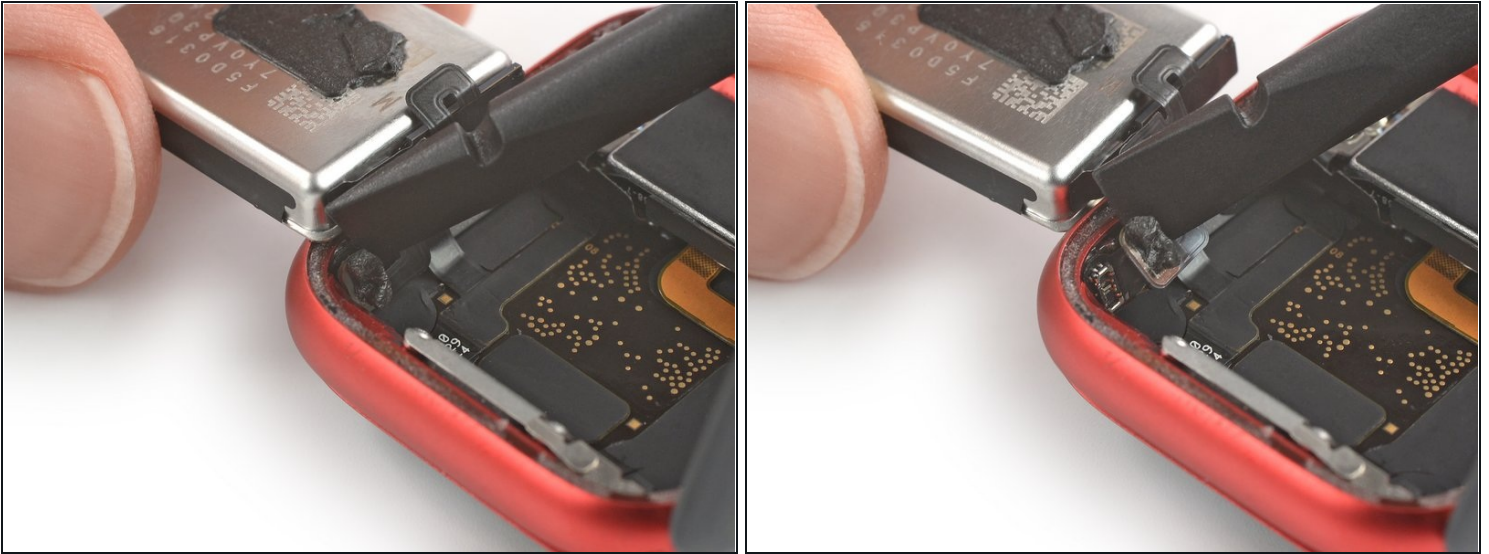
Step 13 — Move the battery



⚠ The battery flex cable is long enough to allow you to place the battery outside the watch case, but avoid straining the cable when you lift the battery out of its recess.

- Carefully lift and swing the battery out of its recess.

Step 14 — Disconnect the battery



- Use the flat end of a spudger to pry up and disconnect the battery connector.

Step 15 — Remove the battery



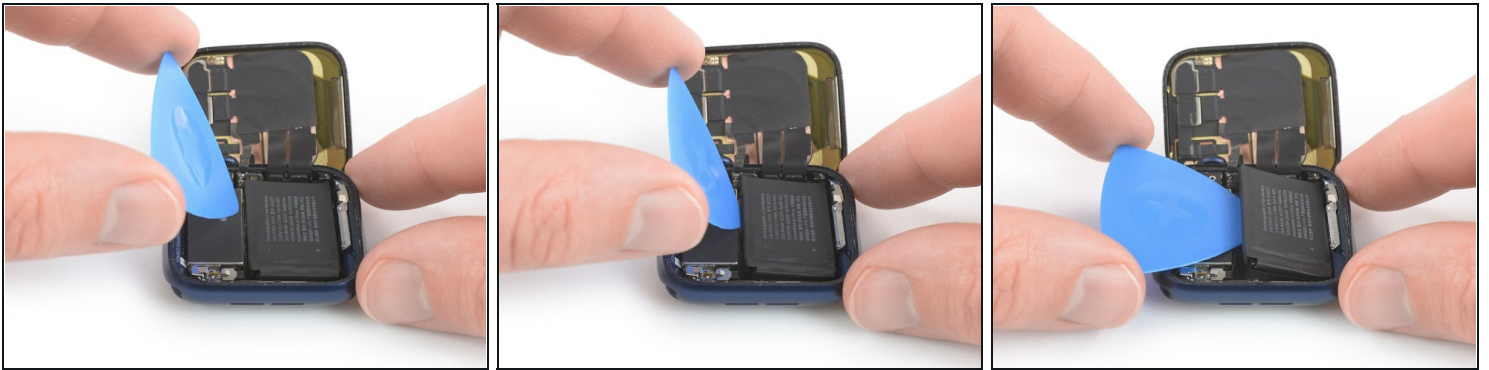
- Remove the battery.

⚠ Don't reinstall a damaged or deformed battery, as doing so is a potential safety hazard.

ⓘ If you're reusing your old battery during reassembly, you can reuse the existing adhesive to secure the battery during reassembly.

ⓘ Alternatively, remove the old adhesive with high concentration isopropyl alcohol and a lint free cloth and use a small piece of double-sided tape such as [Tesa 61395](#), or a dab of liquid adhesive such as [E6000](#).

Step 16 — Pry up the battery



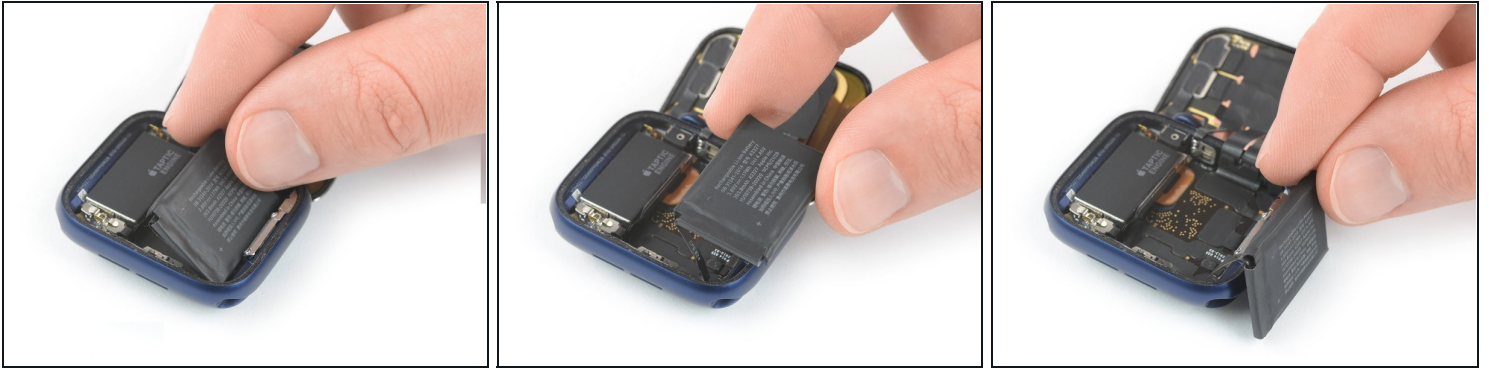
ⓘ The following four steps show how to remove the battery from a **44 mm** Apple Watch Series 6.

- Insert an opening pick between the battery and the Taptic Engine.
- Use constant, steady pressure to slowly pry the battery up, separating it from the adhesive securing it to the mainboard.

⚠ Make sure you don't puncture or deform the battery, as it can catch fire and/or explode if damaged.

⚠ Don't try to remove the battery all the way yet. It is still connected to the watch assembly.

Step 17 — Move the battery



⚠ The battery flex cable is long enough to place the battery outside the watch case during the following procedure but avoid straining it when lifting the battery out of its recess.

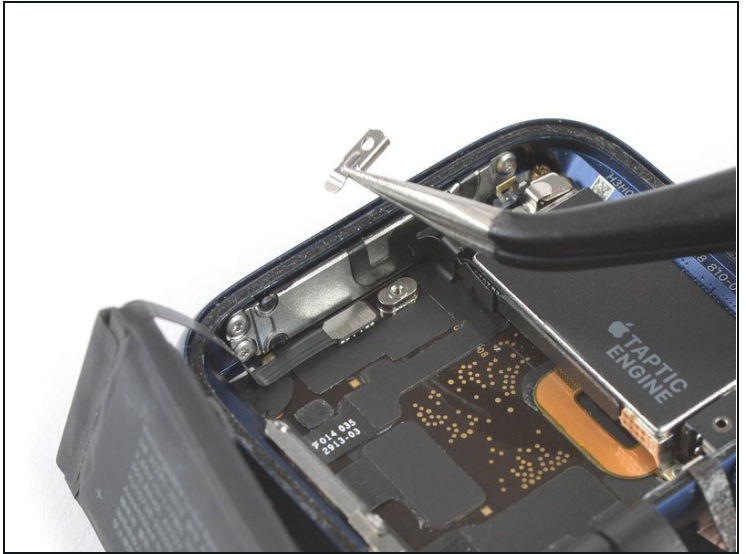
- Carefully lift the battery out of its recess and place it outside the watch case opposite to the Taptic Engine.

Step 18 — Remove the battery connector screw



- Remove the single 1.2 mm-long tri point Y000 screw.

Step 19



- Use a pair of [tweezers](#) to remove the metal shield covering the battery connector.

Step 20



- Use the flat end of a spudger to pry up and disconnect the battery connector.

Step 21 — Remove the battery



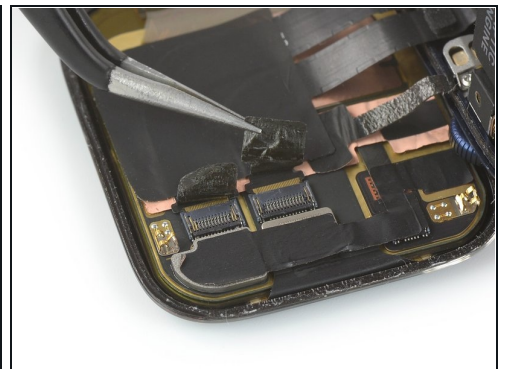
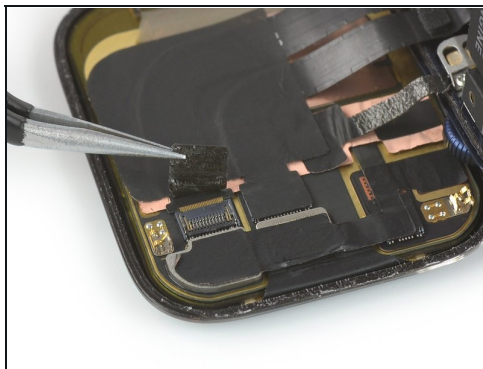
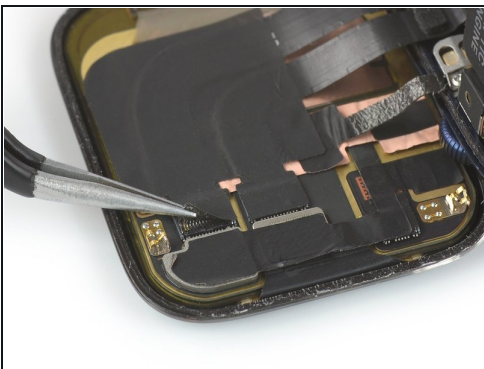
- Remove the battery.

⚠ Do not reinstall a damaged or deformed battery, as doing so is a potential safety hazard.

ⓘ If you are reusing your old battery during reassembly, you can reuse the existing adhesive to secure the battery during reassembly.

ⓘ Alternatively, remove the old adhesive with high concentration isopropyl alcohol and a lint free cloth and use a small piece of double-sided tape such as [Tesa 61395](#), or a dab of liquid adhesive such as [E6000](#).

Step 22 — Peel off the protective foil



- Use a pair of [tweezers](#) to carefully peel the black protective tape off both display connectors.

Step 23 — Release the display cables



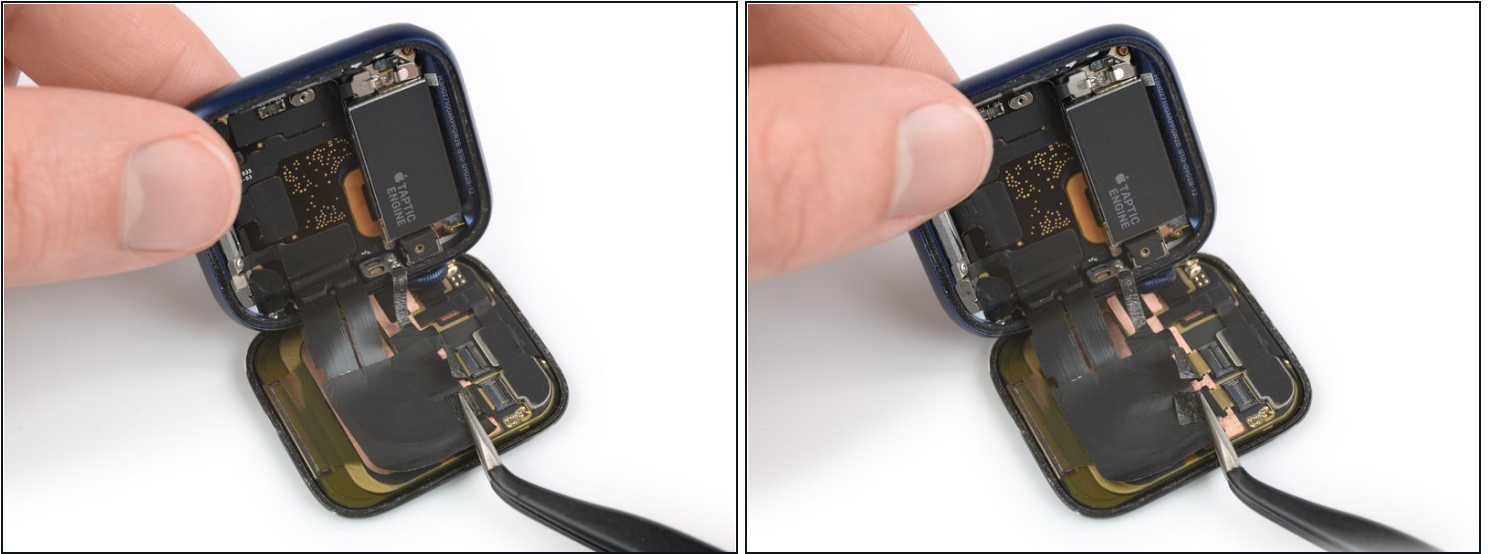
- Use the pointed end of a spudger to pry up the lock bars on both ZIF connectors securing the display cables.

Step 24



- Use a pair of tweezers to carefully peel off the edges of the sticker which adheres the display and the grounding cable to the rear side of the screen.

Step 25



- Use a pair of tweezers to pull both display cables out of the ZIF connectors.
⚠ Do not pull on the watch assembly, or you may rip the display cable.

Step 26 — Remove the screen



- Separate the watch assembly and the screen.

To reassemble your Apple Watch Series 6 follow these instructions in reverse order to reattach the screen and the battery.

Apply a little bit of high isopropyl alcohol (>90%) to a Q-tip or use a cleaning pad to gently remove the leftover adhesive on the edges of the watch case and the screen before installing new adhesive.

Take your e-waste to an [R2 or e-Stewards certified recycler](#).

Repair didn't go as planned? Check out our [Answers community](#) for troubleshooting help.