



# How To Replace the Wheels on a Trash Can

This is a guide that will demonstrate how to replace the wheels on a trash can.

Written By: Thien Pham



## INTRODUCTION

The life of a trash can is dirty and rough. With those conditions, it can be expected that something will eventually break. Here is our guide to replacing the wheels of a 96 gallon toter trash can in the case that it does break. No experience is necessary, only a couple tools and these steps will get you a trash can that can roll again.



### TOOLS:

- [Flathead Screwdriver](#) (1)
- [Rubber Mallet](#) (1)
- [PB B'LASTER](#) (1)
- [Latex or nitrile gloves](#) (1)



### PARTS:

- [Toter Wheel Kit](#) (1)

*Specific to Toter but may work for similar trash cans*

## Step 1 — Wheels



- Flip the trash can upside down.

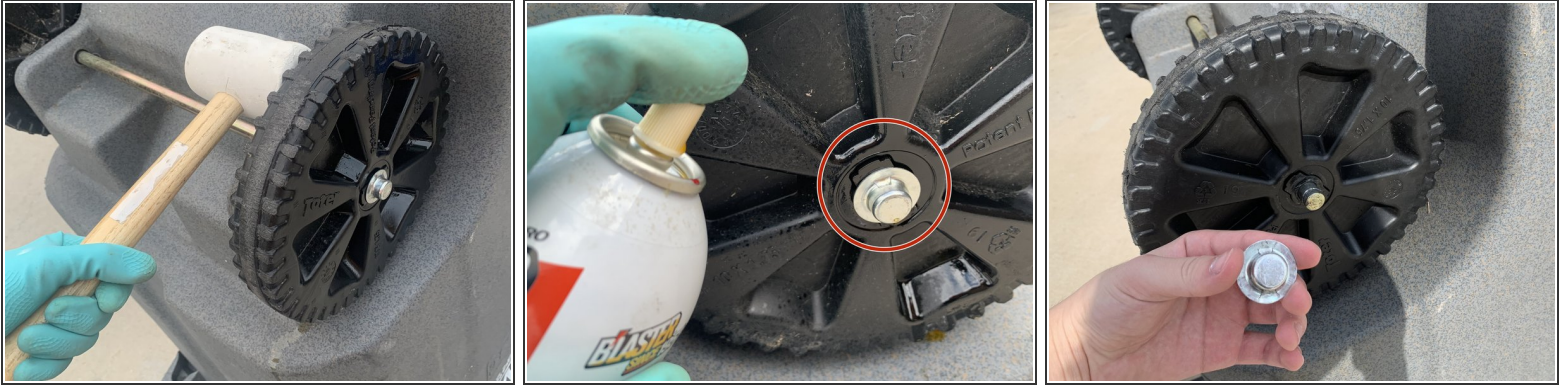
## Step 2



- Position the flathead screwdriver on the tab of the pal-nut in the center of the wheel.
- Position the rubber mallet on top of the flathead screwdriver.
- Hit the flathead screwdriver with the rubber mallet a couple times for each tab.
- ⓘ There are two tabs on each pal-nut, so just do these actions for the pal-nut on one side. The other wheel can remain connected to the axle to remove.
- ⓘ This is to push the tab inside to free the pal-nut from the axle that the wheel is connected to.



### Step 3



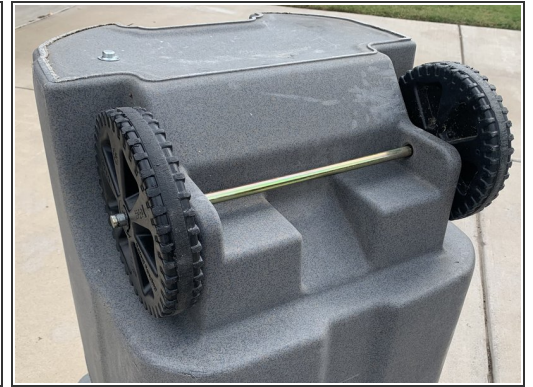
- Use the rubber mallet to hit the back of the wheel and loosen the pal-nut.
- If the pal-nut is stuck, use PB B'LASTER to spray on the pal-nut to break up any rust or corrosion.  
⚠ Caution: Wear gloves so the PB B'LASTER does not get on your skin.
- Remove the pal-nut.

### Step 4



- Remove the wheel with the pal-nut from the axle.
- Slide the other wheel off of the trash can with the axle still attached.

## Step 5



**i** To replace with the new parts, reverse the previous steps.

- Slide the new wheel with the axle on to the trash can.

## Step 6



- Position the new pal-nut on the axle.
- Use the rubber mallet and hit the pal-nut on the axle until it is secured.
- i** Hold the other side in place while hammering to offer some opposing force. This will help the pal-nut latch on to the axle.
- Check that both sides are secured.
- Flip the trash can back to the normal position.
- Test the new wheels by rolling the trash can.

Now that your trash can is up and rolling again, you can now pat yourself on the back for a job well done!