



# Huawei Watch GT 2 (46 mm) Motherboard & Daughterboard Replacement

Use this guide to replace the motherboard &...

Written By: Dominik Schnabelrauch



# INTRODUCTION

Use this guide to replace the motherboard & daughterboard in the Huawei Watch GT 2 (46 mm).

---

## TOOLS:

Spudger (1)

T2 Torx Screwdriver (1)

Phillips #00 Screwdriver (1)

Tweezers (1)

ESD Safe Blunt Nose Tweezers (1)

---

## Step 1 — Remove the watch band



- Before starting repairs, take your watch off the charger and power it down.
- Remove the watch band.

## Step 2 — Unfasten the screws



- Remove the four 3.7 mm-long Torx T2 screws.

## Step 3 — Insert a spudger



- Insert the edge of a spudger into the middle loudspeaker opening at the top edge of your watch.

## Step 4 — Pry up the back cover assembly



ⓘ The plastic clamps holding the back cover in place sit very tight and may require some force during the prying procedure.

- Use the spudger to pry up the back cover assembly of your Huawei watch GT 2.

⚠ Don't try to remove the back cover assembly all the way yet, it's still connected to the motherboard.

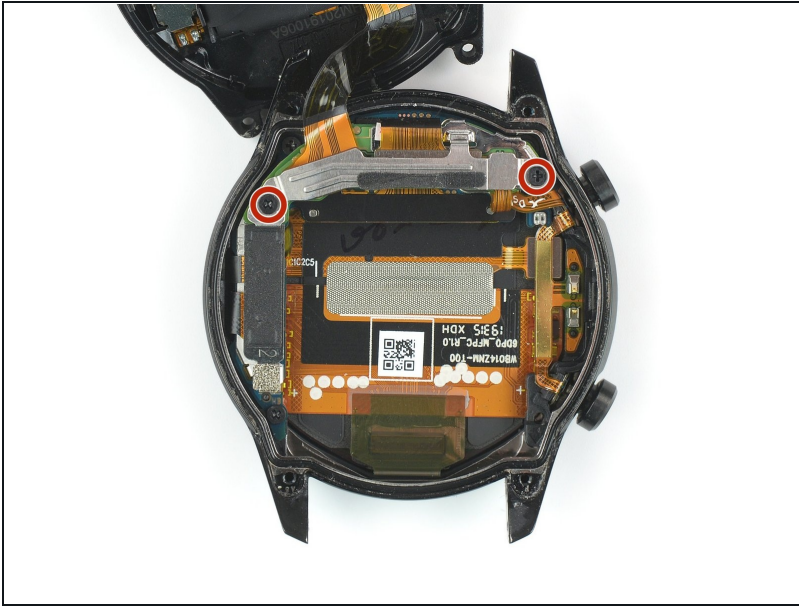
## Step 5



- Carefully swing the back cover assembly open to an upward position.

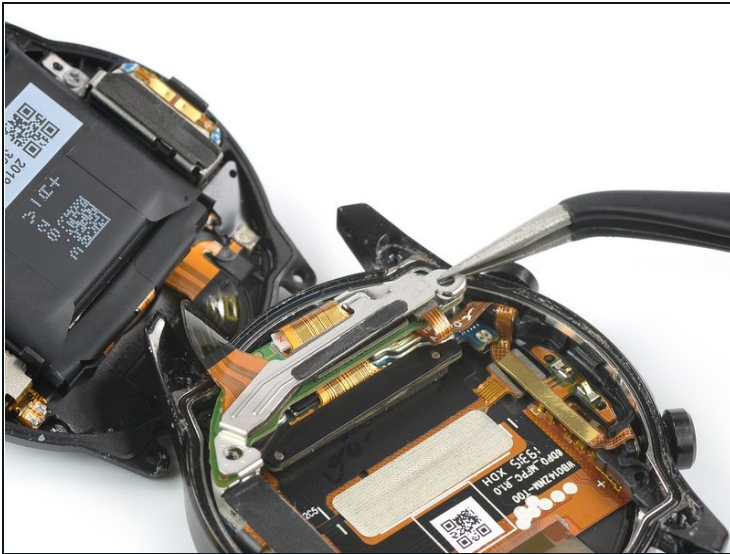


## Step 6 — Unfasten the screws



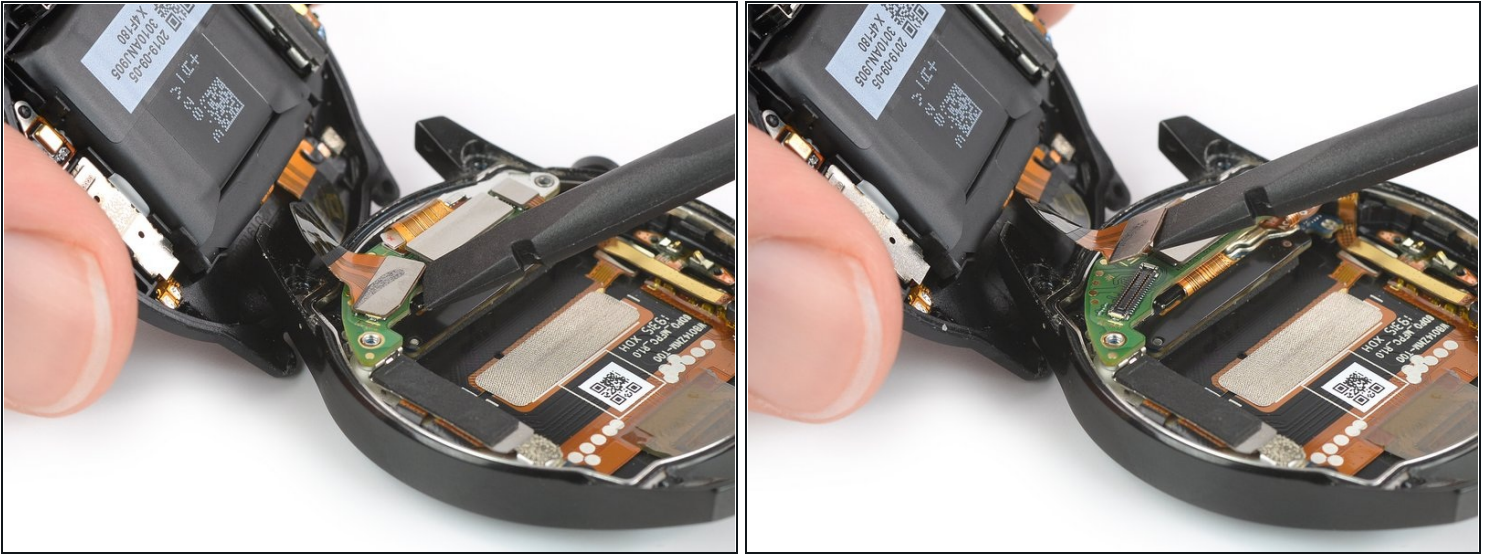
- Remove the two 2.3 mm-long Phillips #00 screws.

## Step 7 — Remove the metal shield



- Use a pair of tweezers to remove the metal shield covering the multi-purpose flex connector.

## Step 8 — Disconnect the flex cable



- Use the flat end of a spudger to pry up and disconnect the multi-purpose flex connector.

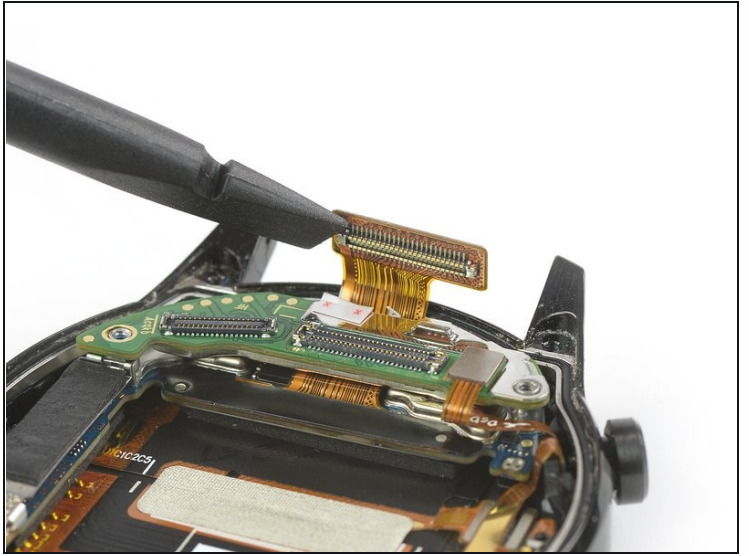
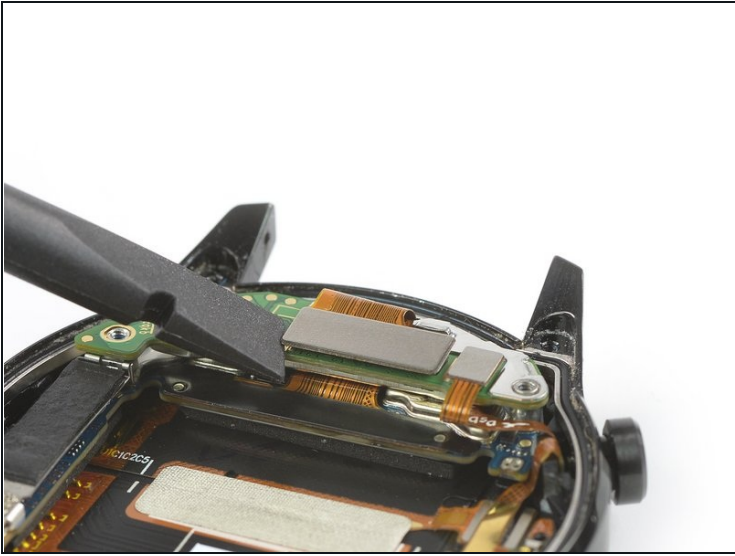
## Step 9 — Separate the back cover assembly



- Separate the back cover assembly from the watch case.

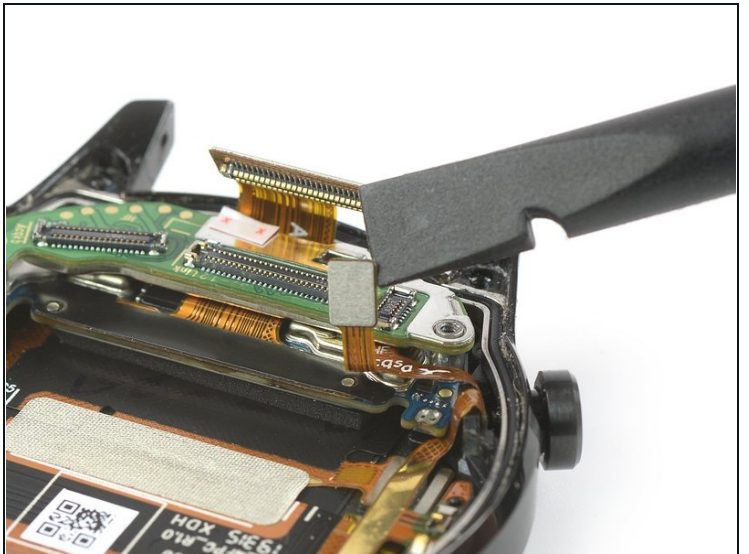
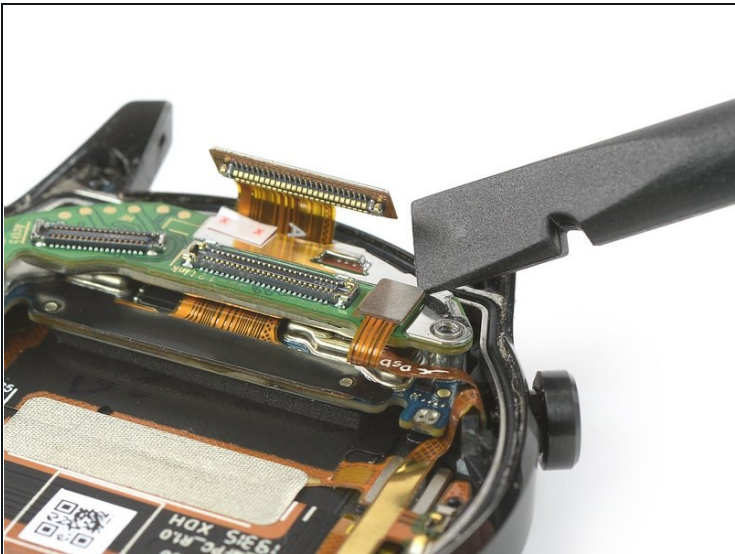


## Step 10 — Disconnect the main flex cable



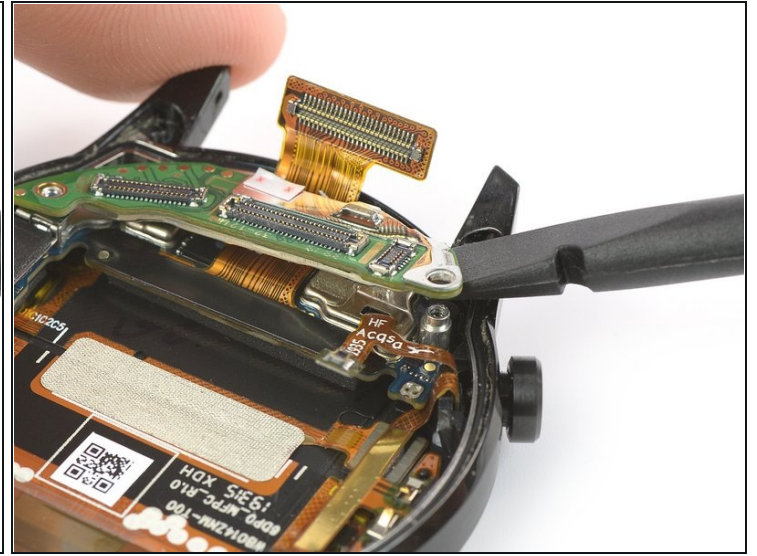
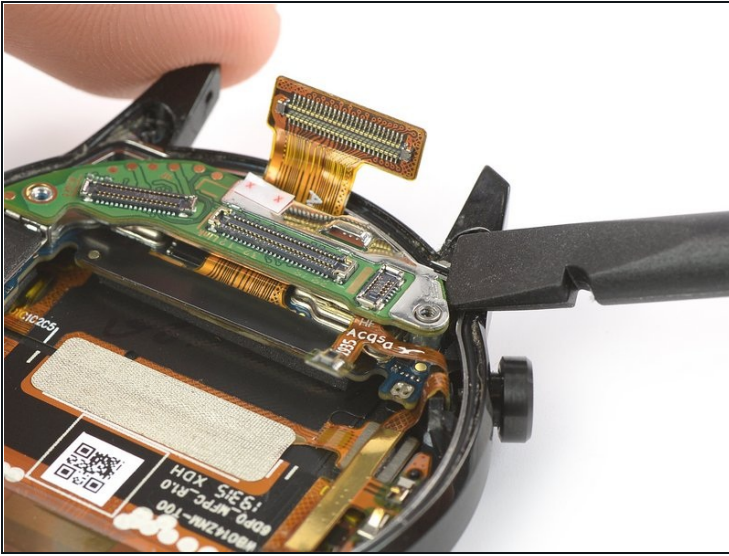
- Use the flat end of a spudger to pry up and disconnect the main flex cable from the daughterboard.

## Step 11 — Disconnect the watch buttons



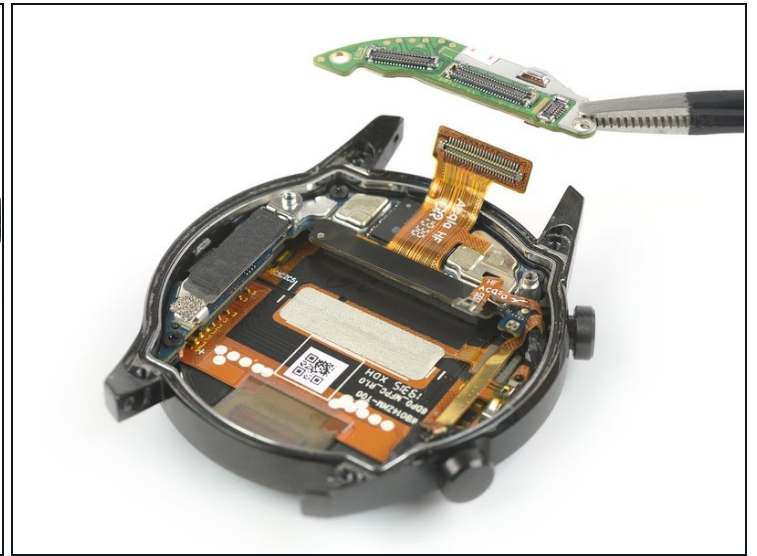
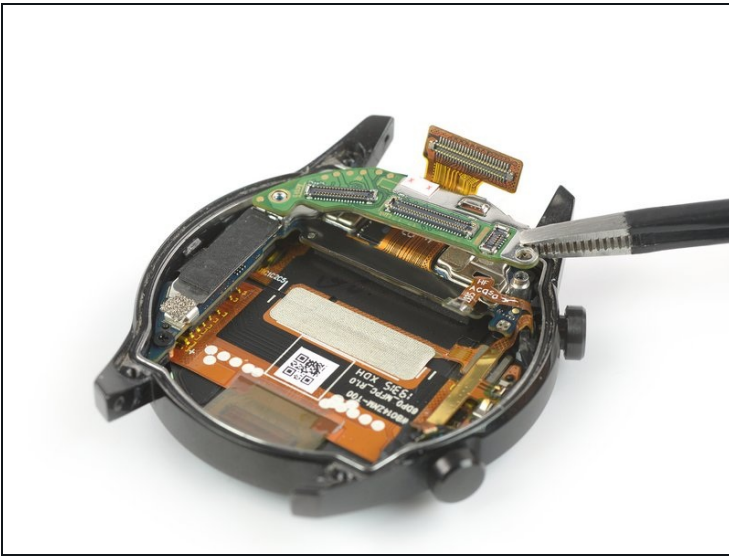
- Use the flat end of a spudger to pry up and disconnect the watch buttons flex cable from the daughterboard.

## Step 12 — Lift the daughterboard



- Use the flat end of a spudger to lift the right edge of the daughterboard off its socket.

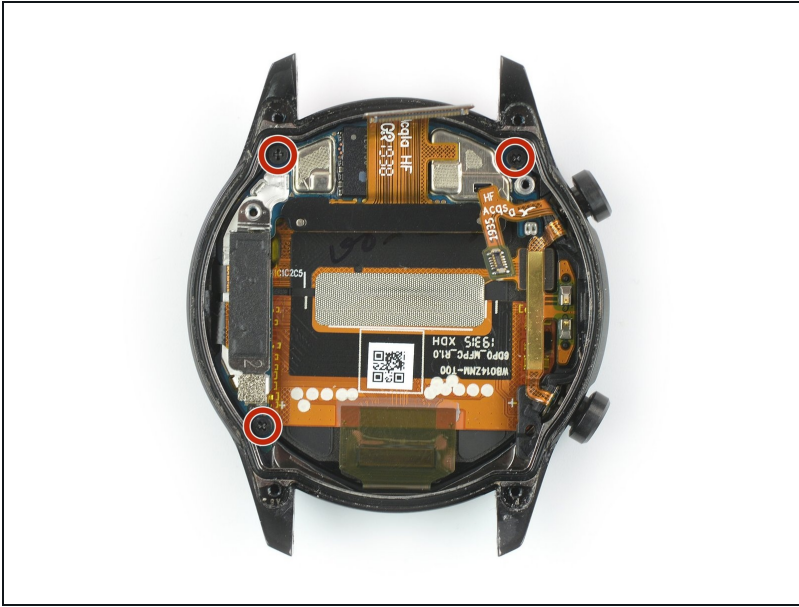
## Step 13 — Remove the daughterboard



- Use a pair of [tweezers](#) to remove the daughterboard.

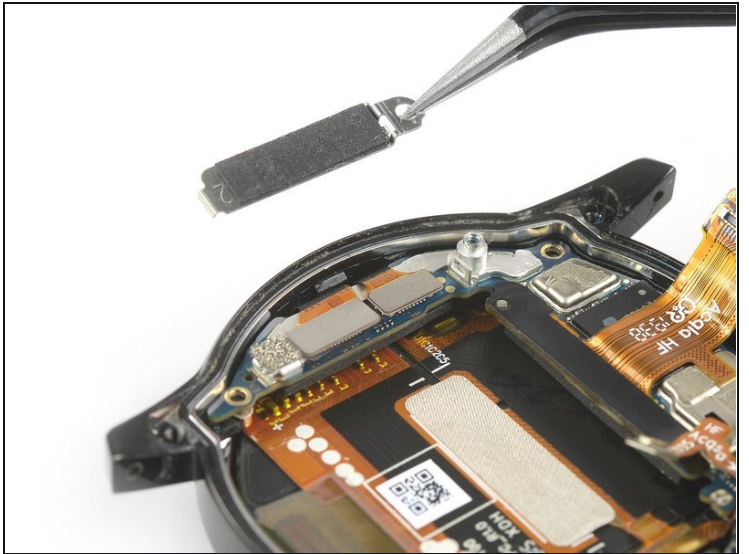
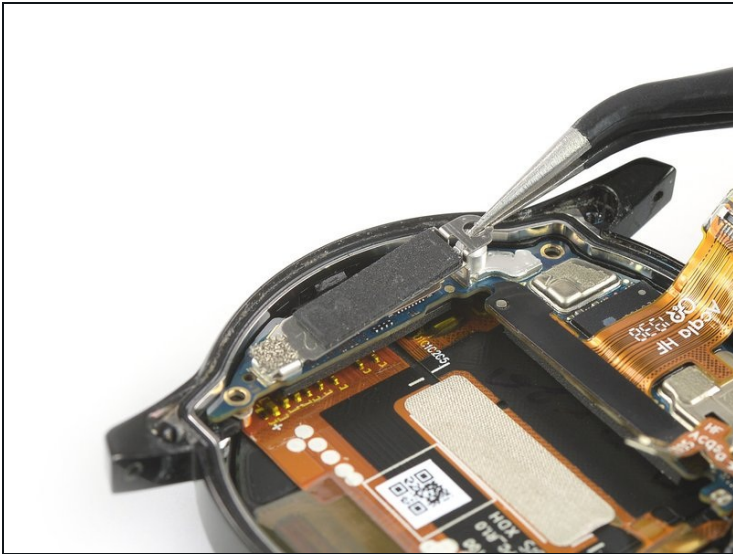


## Step 14



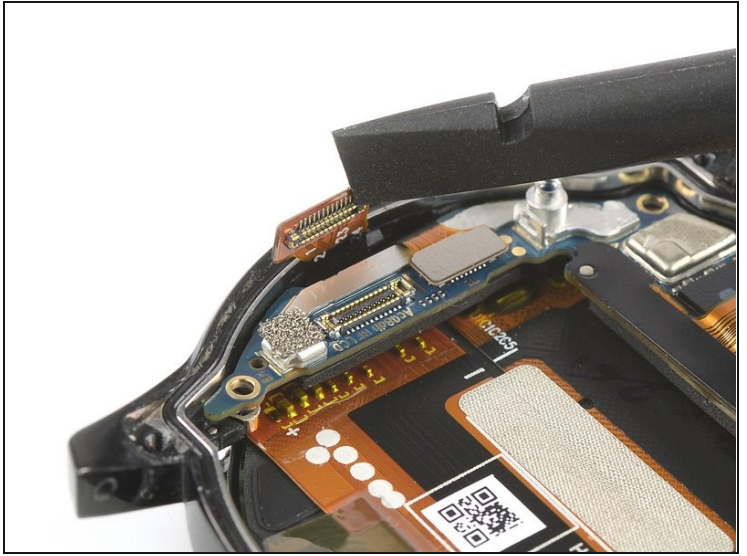
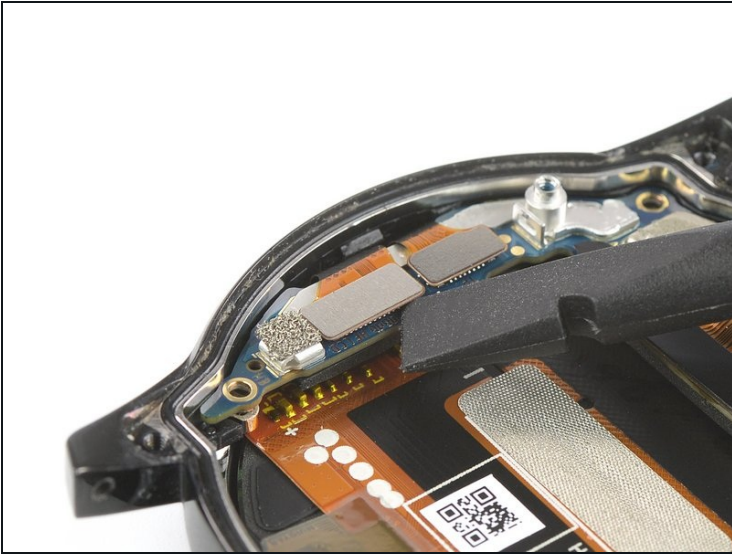
- Remove the three 2.3 mm-long Phillips #00 screws.

## Step 15



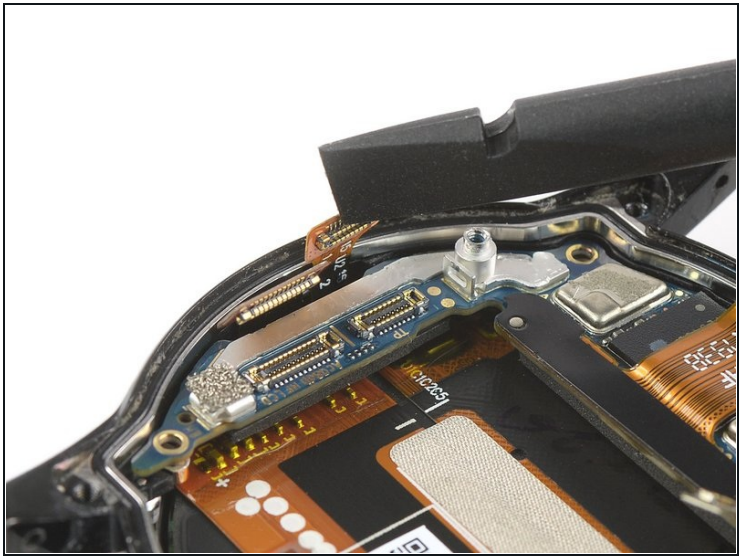
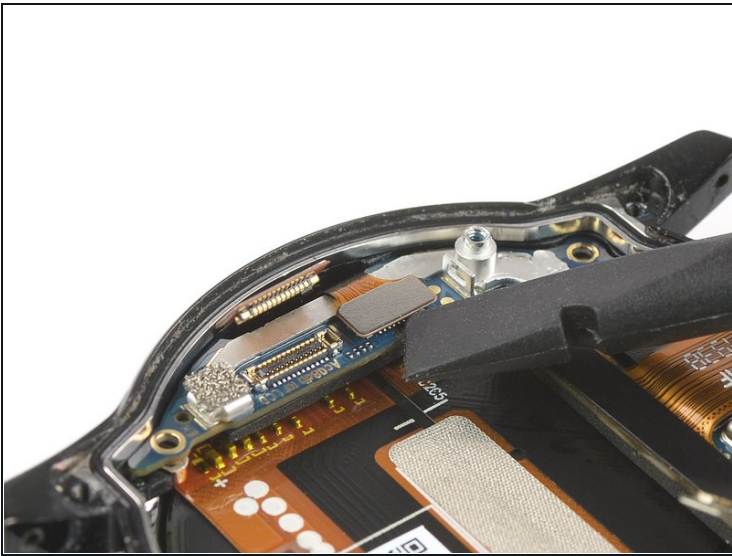
- Use a pair of tweezers to remove the metal shield covering the display connectors.

## Step 16



- Use the flat end of a spudger to pry up and disconnect the left display flex cable.

## Step 17



- Use the flat end of a spudger to pry up and disconnect the right display flex cable.







---

To reassemble your device, follow these instructions in reverse order.

Take your e-waste to an [R2 or e-Stewards certified recycler](#).

Repair didn't go as planned? Try some [basic troubleshooting](#), or ask our [Answers community](#) for help.