



Dreamer Autoshade Driver Tube Disassembly

Disassemble the Autoshade driver tube.

Written By: David





TOOLS:

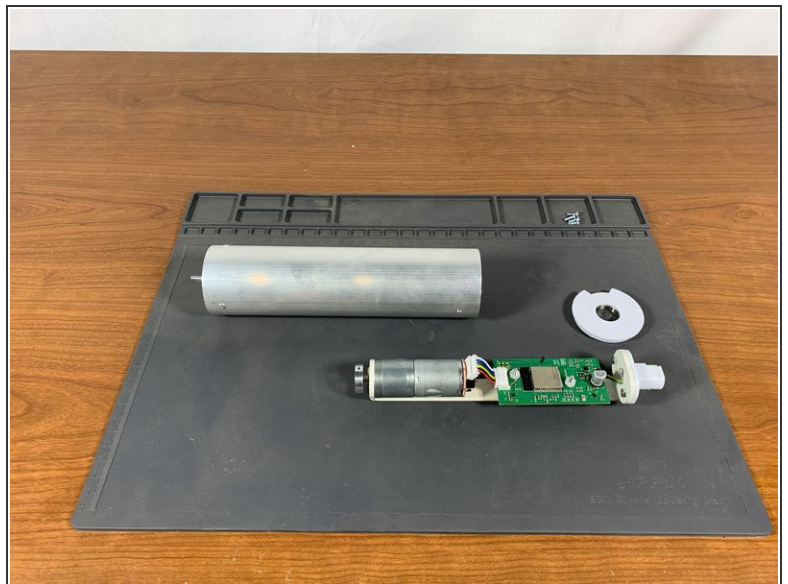
- [Phillips #1 Screwdriver](#) (1)
 - [Flathead Screwdriver](#) (1)
 - [T5 Torx Screwdriver](#) (1)
-

Step 1 — Remove motor hub fasteners



- Remove the four Phillips head screws that fasten the motor hub to the tube adapter.

Step 2 — Remove driver bearing cap



- Using a flathead screwdriver, pry the bearing cap from the tube.

To reassemble your device, follow these instructions in reverse order.