



Dreamer Autoshade Driver Blocking

Move the circuit board so your Dreamer Autoshade Driver tube does not block.

Written By: David





TOOLS:

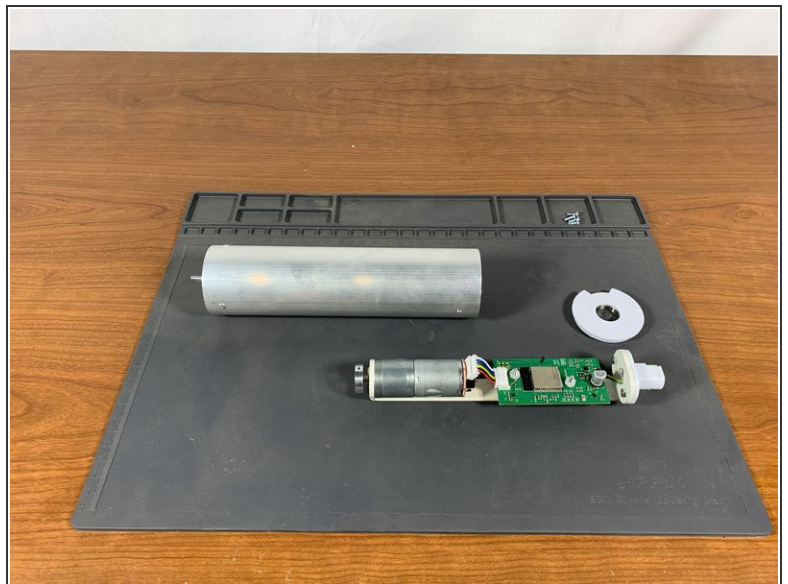
- [Phillips #1 Screwdriver](#) (1)
 - [Flathead Screwdriver](#) (1)
 - [T5 Torx Screwdriver](#) (1)
-

Step 1 — Remove motor hub fasteners



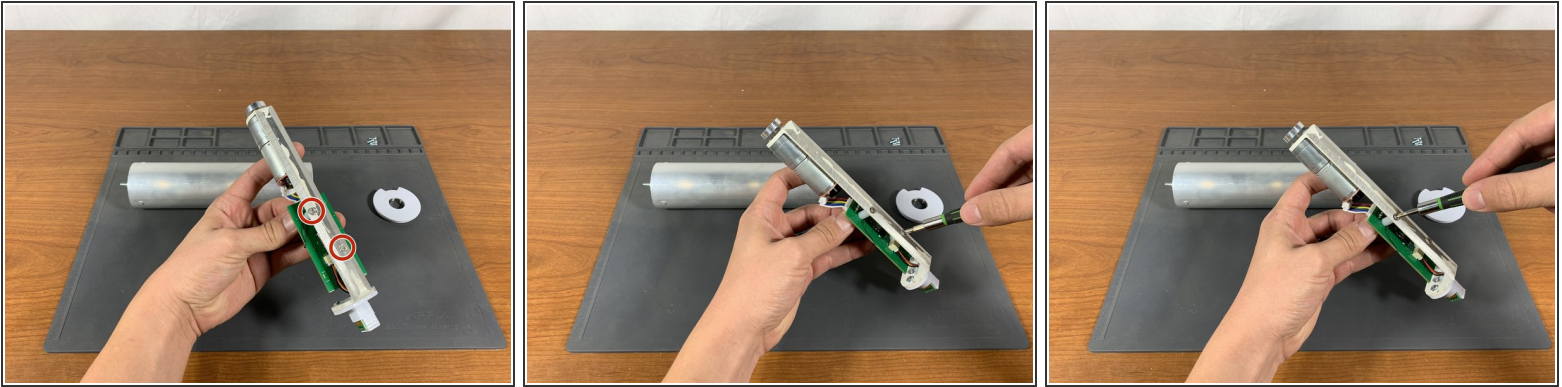
- Remove the four Phillips head screws that fasten the motor hub to the tube adapter.

Step 2 — Remove driver bearing cap



- Using a flathead screwdriver, pry the bearing cap from the tube.

Step 3 — Loosen PCB mounting Screws



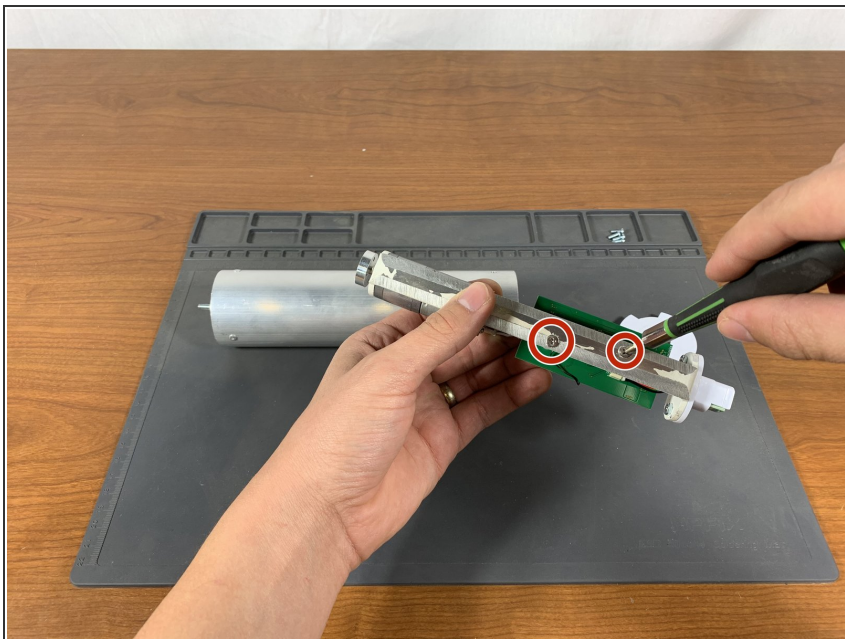
- Use a #1 Phillips head screwdriver to loosen the PCB mounting screws until the circuit board can be adjusted. This should only take 1-2 full rotations of the screwdriver. Do not fully remove the screws.

Step 4 — Straighten PCB



- The circuit board can cause problems if it is not properly centered on the sheet metal mount. See the picture for details.
- The blue lines in the picture show the edges of the white metal PCB plate, while the red lines show the edge of the PCB. Adjust the PCB so it lines up as closely as possible with the metal plate. This will ensure that the PCB does not contact the edge of the tube while rotating.

Step 5 — Tighten PCB mounting screws



- Tighten the two PCB mounting screws until the PCB cannot move freely.

To reassemble your device, follow these instructions in reverse order.