



# How to Open the Razer Kishi

How to open your Razer Kishi for repairs and modding.

Written By: Adriana Zwink



# INTRODUCTION

Use this guide to open your Razer Kishi for repairs and modding.

Both controller sides of the Razer Kishi are almost identical in construction. The opening process is similar on both sides, therefore we will only show the right side in this guide.



## TOOLS:

- [Tri-point Y0 Screwdriver](#) (1)
  - [iFixit Opening Picks set of 6](#) (1)
  - [Spudger](#) (1)
-

## Step 1 — Remove the screws



**i** The opening process is the same on both sides. For simplicity, this guide shows only the right-side opening process. Unscrew whichever side you wish to open and work on.

- For the right side, remove the five Y0 screws securing the right side of the controller.
  - Four 9.2 mm screws
  - One 7.2 mm screw
- If you wish to open the left side, remove the five Y0 screws securing the left side of the controller.
  - Four 9.2 mm screws
  - One 7.2 mm screw

## Step 2 — Release the bottom edge clips



**i** Both cases are held together by plastic clips.

- Insert an opening pick in the seam between the top and bottom case, at the bottom left corner of the controller.
- With the pick still in the seam, slide it along the bottom edge to the bottom right corner to loosen the plastic clips.

## Step 3 — Release the side edge clips



- Slide the opening pick along the right edge to loosen the plastic clips.

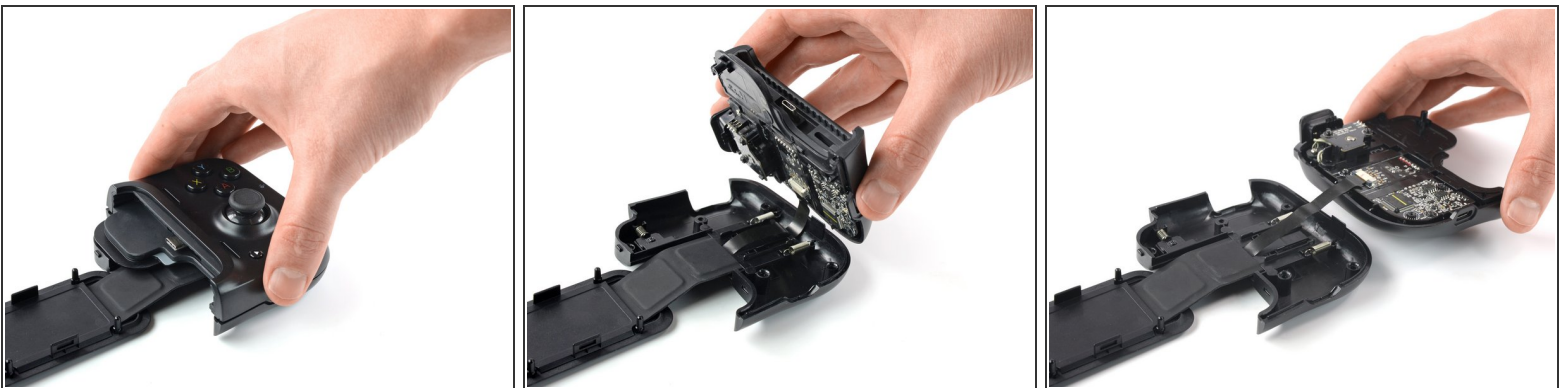
## Step 4 — Release the top edge clips



- Slide the opening pick along the top edge to loosen the remaining plastic clips.

⚠ Don't try to remove the top side yet, the case is still connected to the board.

## Step 5



- Carefully lift the top side and unfold it to the right, like a book.



## Step 6 — Disconnect the interconnect cable



- Using the pointed end of a spudger, push the grey tabs on the interconnect socket away from the socket, parallel to the interconnect cable, to release the cable.
- Pull the cable out of the socket.

To reassemble your device, follow these instructions in reverse order.

Take your e-waste to an [R2 or e-Stewards certified recycler](#).

Opening didn't go as planned? Try some [basic troubleshooting](#), or ask our [Answers community](#) for help.